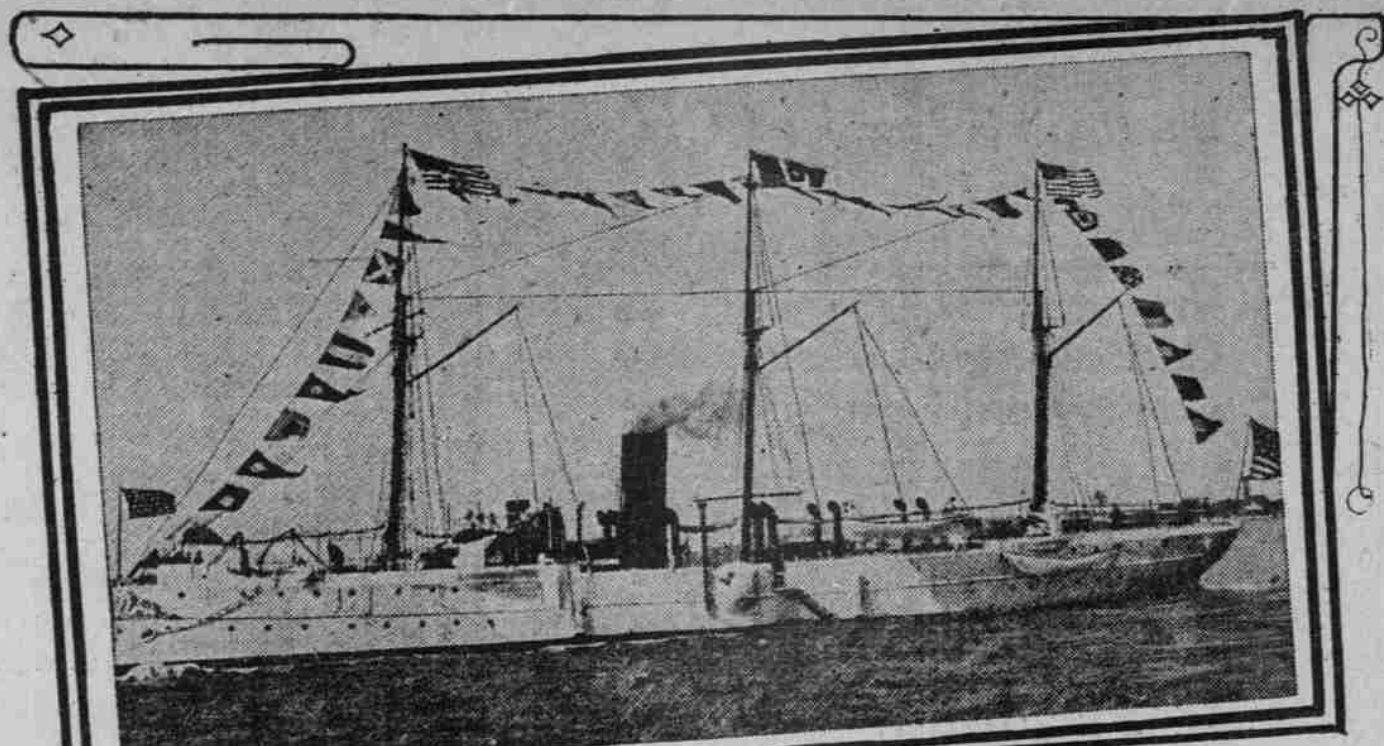


WARSHIPS WHICH WILL VISIT PORTLAND HARBOR.



GUNBOAT, YORKTOWN

TWO WARSHIPS DUE

Local Port to Entertain Yorktown and Marblehead.

NAVAL MILITIA ON BOARD

One Vessel Veteran of Important Engagement of Spanish-American War—Captain Victor Blue Is Hero of Santiago.

Playing the host to two vessels of the American Navy will be the pleasant task of the Port of Portland tonight.

Visits of Interest.

These visits will be especially interesting, as the Marblehead has a detachment of the California Naval Militia aboard.

Enter Mined Harbor.

Another incident of the same period was the approach of the Marblehead to the bay, as she was compelled to steam through a narrow entrance, heavily mined.

Warehouse District Gains.

An increase uniformly of 25 per cent or more obtains in the warehouse district, which Mr. Sigler considers is included in that section that lies along the railroad tracks and extends south from Hoyt street.

Sigler Tells of Methods.

"I try to figure the income a piece of property would bring if it were improved as it ought to be in relation to other improvements on the city," he said, "and from that to deduce the approximate value."

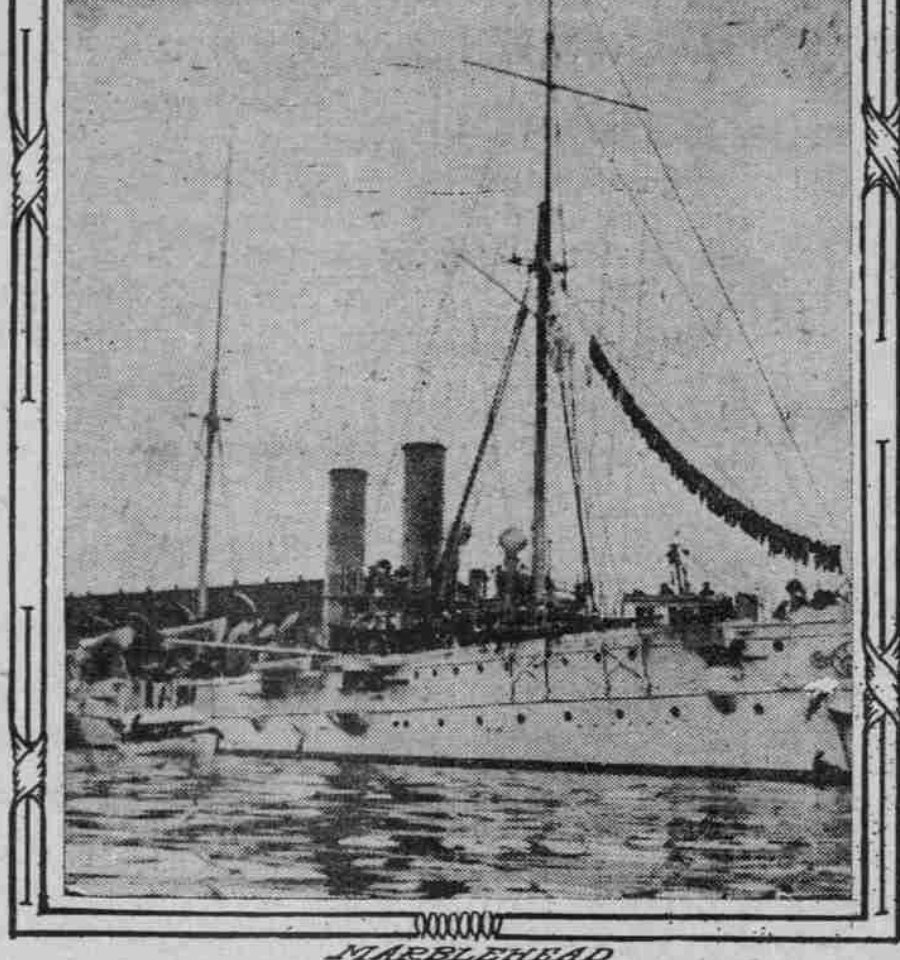
BEACH BIRDS BEING SHOT

Deputy Game Warden Starts Inquiry at Cannon Beach.

ASTORIA, Or., July 10.—(Special.)—Deputy Game Warden Peterson left for Cannon Beach today to investigate the report that the summer visitors are ruthlessly shooting different varieties of birds, one of the attractive features of the place.

Citizen Sailors Coal Ship.

SEATTLE, Wash., July 10.—The cruiser Marblehead, manned by the California



MARBLEHEAD

LOG THREATENS TRAIN

CALIFORNIA EXPRESS STOPPED IN NICK OF TIME.

Engineer Jams on Brakes and Load of Human Freight Brings Up One Foot From Fallen Tree.

CRY OF DOGS TERRIFIES

Disturbed Owner Asserts Real Estate Values Are Depreciated.

PIONEER OF 1847 DIES

William Henry McKune Active in Early Days of Coast.

Smoking Costs More.

A new law was passed by the last Congress, which did not attract the attention of most people, but which the tobacco manufacturers have discovered.

Commander Blue a Hero.

Captain Blue, who will bring her to Portland from the north as the result of a special request from the Chamber of Commerce, was advanced in grade following the Spanish-American war for "extraordinary services."

SEASICKNESS

Will be prevented and relieved by using TONIQUE MAL DE MER, a safe and reliable remedy.

SEASICKNESS

Will be prevented and relieved by using TONIQUE MAL DE MER, a safe and reliable remedy.

DITULITHIC

Holds the PRIZE

STATEMENT OF CONDITION OF LUMBERMENS NATIONAL BANK

At Close of Business June 30th, 1910

Table with columns for RESOURCES, LIABILITIES, and DEPOSITS, listing various financial items and their values.

Better Than Bonds

SAFER THAN THE STRONGEST BANK.

An Investment Yielding 8 Per Cent Net Per Annum—No Taxes, No Risk—No Fees or Deductions of Any Kind.

This is not a get-rich-quick proposition, but a legitimate, thoroughly safeguarded investment opportunity.

TRAVELERS' GUIDE

HAMBURG-AMERICAN

All Modern Safety Devices (Wireless, Etc.) LONDON—PARIS—HAMBURG

ITALY VIA GIBRALTAR

S.S. MOLTORE, July 13, 2 P. M. S.S. HAMBURG, August 1, 12 P. M.

COLUMBIA RIVER SCENERY

CHAS. R. SPENCER, Fast Excursion Steamer, Leaves daily except Wednesday, 8 A. M.

S.S. Golden Gate for Tillamook, Bay City and Garibaldi

Leaves Wash.-st. dock Tuesday at 5 P.M. Freight and Passengers. Phone Main 8619, A 2465.

San Francisco and Los Angeles DIRECT

North Pacific S. S. Co.'s S. S. Roanoke and S. S. Elder sail every Wednesday alternately at 6 P. M.

SAN FRANCISCO & PORTLAND S.S. CO.

New service to Los Angeles, via San Francisco, every five days.

COOS BAY LINE

8-DAY SERVICE. Steamer Breakwater leaves Portland 9 A. M.

SEASICKNESS

Will be prevented and relieved by using TONIQUE MAL DE MER, a safe and reliable remedy.

SEASICKNESS

Will be prevented and relieved by using TONIQUE MAL DE MER, a safe and reliable remedy.

DITULITHIC

Holds the PRIZE

curved point in the track when he observed the log lying on the track, less than 100 yards away.

Northbound, the Shasta Limited was racing at 50 miles an hour.

That is usually passed at from 40 to 50 miles an hour.

THE BANK OF CALIFORNIA NATIONAL ASSOCIATION

SAN FRANCISCO FOUNDED 1864

STATEMENT OF CONDITION

INCLUDING ITS BRANCHES IN PORTLAND, SEATTLE, TACOMA AND VIRGINIA CITY

At Close of Business, June 30, 1910

Table with columns for ASSETS and LIABILITIES, listing various financial items and their values.

PORTLAND OFFICE

Chamber of Commerce Building THIRD AND STARK STS.

WM. A. MAC RAE, Manager. J. T. BURCHAEHL, Asst. Manager.

LADD & TILTON BANK

PORTLAND, OREGON ESTABLISHED 1859

OLDEST BANK ON THE PACIFIC COAST

CAPITAL \$1,000,000

SURPLUS and PROFITS \$600,000

OFFICERS. DIRECTORS.

W. M. LADD, President. EDWARD COOKINGHAM, Vice-President.

Interest Paid on Savings Accounts and Certificates of Deposit

We Issue Letters of Credit, Foreign Drafts, and Travelers' Checks

First National Bank

Capital \$1,500,000

Surplus 750,000

Oldest National Bank West of the Rocky Mountains

Bank Notice

Security Savings and Trust Company

Corbett Building, Fifth and Morrison Streets

Capital and Surplus \$900,000

Invites Accounts of Merchants, Individuals and Savings