

TAFT - ROOSEVELT
REVEALS SECRET

Desire for Closed Session, So
It Is Said, Comes From
ex-President.

COLONEL VISITING LODGE

Executive and His Predecessor in
Office Are Expected to Meet To-
day at Burgess Point—Much
Said to Depend on Meeting.

BEVERLY, Mass., June 29.—(Spe-
cial.)—The key-note to the
meeting between President Taft
and Colonel Roosevelt, which is expected
to take place tomorrow at Burgess
Point. It is not now expected that
Governor Hughes will be present, but
Senator Lodge probably will accom-
pany his guests to the Taft cottage.

Secretary Norton went this morn-
ing to Cambridge to attend a luncheon
given in connection with the Harvard
commencement by J. J. Storrow. There
he saw and talked with Colonel
Roosevelt, who is tonight a guest at
the summer home of Senator Lodge at
Nahant, a 45-minute automobile ride
from Beverly. Upon his return at 5
o'clock Secretary Norton declined ab-
solutely to say whether Colonel Roose-
velt would meet President Taft.

It is expected that such a call will
be paid by Colonel Roosevelt tomor-
row. It will be the most important
political conference which has taken
place since Mr. Taft became President.
When it is over, those privileged to be
present at the interview will know
whether President Taft and Colonel
Roosevelt are to continue as political
friends.

Why there should be a desire for
secrecy so absolute regarding the meet-
ing is not understood. It comes from
the Roosevelt end. No other inference
can be had from the closed lips of Sec-
retary Norton after returning from the
meeting in Cambridge. He had not
seen President Taft when he declined
to talk about it.

Before President Taft had been in
Beverly two hours he had ordered his
automobile and started for the Beverly
Beverly Hospital, where he paid a
visit to the bedside of the Italian who
was injured by the automobile driven
by Robert A. Taft. He found the Italian
laborer improved, and after ex-
pressing his sorrow at the accident and
the hope that he would soon recover,
left the injured man with the assur-
ance that everything possible was being
done to aid his recovery.

Eight secret service men make up
the President's guard. They will work
in three details of eight hours each and
protect, not only the person of the
President, but his home and grounds
about from intrusion.

MOTHER CONDUCTS CASE

Mrs. Knight Acts as Counsel for
Chauffeur, Held for Larceny.

Frank Knight, a chauffeur, was held to
the grand jury in Municipal Court yester-
day on a charge of the larceny of an
automobile worth \$200, the property
of Mrs. Della Jones. Knight's
case was conducted by his mother, who
told the court that she wanted to see her
boy get his play. She was active in
getting out the evidence and in coaching
her son, who was not apt at questioning
the witnesses against him.

Knight asserted that he had been em-
ployed to fix up the car for her husband and
to give Mrs. Jones and her female lessons
in running it. He said that he had never
been paid for this service. Last Satur-
day, with the knowledge of Jones, he
said, he took a party out in the car and
it broke down at an inn on the Lincoln
road. Before he could get it back to the
garage he was arrested for larceny, he
said.

"The car was not worth 500 cents," said
Mrs. Knight.

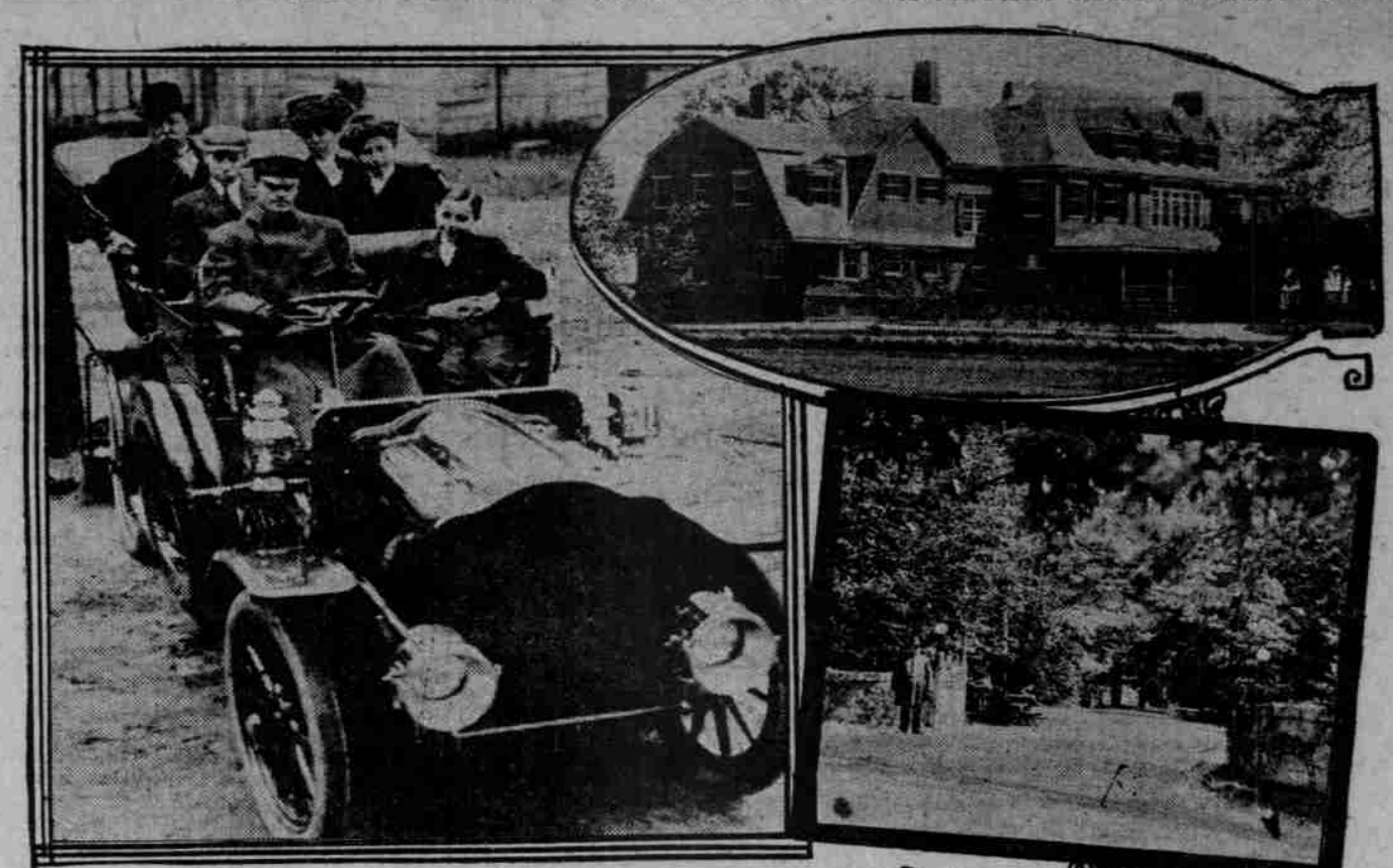
"Do you realize that you are under
oath?" asked Judge Bennett. "If you
do not believe that it is worth more than
that scrap-iron, I cannot believe any of your
testimony after that inaccuracy."

Knight's case was taken up by the
grand jury yesterday afternoon. He said
that he could produce witnesses who
would testify that Jones had authorized
the use of the car.

JUDGE UPHOLDS OFFICER

Policeman Not Compelled to Listen
to Abuse, Court Rules.

TAFT FAMILY, AND THREE GLIMPSES OF SUMMER HOME TO WHICH THEY REMOVED YESTERDAY



President, His Wife, Their Children
and Chauffeur in Their Automobile.

known as a joint line. The Milwaukee
owns its own right of way through
Thurston County from the Junction
with the Grays Harbor & Puget Sound,
and by connection with the Tacoma
Eastern has rail connections with the
Milwaukee main line at Tacoma and
Seattle.

ALASKA COAL LIES IDLE

Conservation That Makes Imports
Necessary Is Opposed.

JUNEAU, Alaska, June 29.—The Re-
publican territorial convention in session
here today adopted a plank for its plat-
form favoring home rule when the propo-
sition comes. The convention asks for
the division of the territory and opposes
conservation as now practiced in Alaska,
citing the coal lands as being allowed
to lie idle while coal is being imported
from British Columbia and Japan.

BIRDS PLENTIFUL IN LANE

Pheasants and Quail Have Been
Protected by Good Weather.

SPRINGFIELD, Or., June 29.—(Spe-
cial.)—Hunting in Lane County this
year will be better than it has been
for some seasons, for from all reports
the birds are more plentiful than usual.
The absence of cold rains to kill the
young is supposed to be the cause.
Conditions have been favorable both
for China pheasants and quail.

VAN DUSEN IS SENTENCED

Albany Man Pleads Guilty to Violat-
ing Liquor Law.

ALBANY, Or., June 29.—(Special.)—
E. J. VanDusen, of Harrisburg, today
pleaded guilty in the State Circuit
Court here to selling liquor in violation
of the local option liquor law, and
Judge Burnett sentenced him to serve
30 days in the Lane County Jail. A
charge against VanDusen of carrying a
concealed weapon was pronounced
guilty. VanDusen was not in court yester-
day when his case was called, and his bonds
on both cases, amounting to \$400, were
forfeited. This morning they he
appeared in court and pleaded guilty to
this order was revoked.

FINE ROAD IN PROSPECT

\$25,000 Boulevard to Connect
South Bend and Raymond.

SOUTH BEND, Wash., June 29.—
(Special.)—For the purpose of secur-
ing a special highway between this
city and Raymond, a distance of ap-
proximately four miles, a petition is
being circulated among the prominent
business men of the city. The petition
will be presented to the County
Commissioners, who meet next week.
It is estimated that the road, which
will be planked the entire distance,
will cost close to \$25,000. It will fol-
low the banks of the Willapa River,
the road that is used at present runs
on the hills overlooking Raymond, and
is not at all suitable. The new high-
way will be a fine, wide, gravel road,
on the side of the railroad, between South
Bend and Raymond and it is believed
that business between the two places
will be stimulated by it.

HOME WORK IS DISCUSSED

Summer School Round Table Takes
Up Domestic Science.

OREGON AGRICULTURAL COL-
LEGE, Corvallis, June 29.—(Special.)—
Deary Juliet Green lectured before the
supervision round table yesterday on
the subject, "Ideal Plan for Course in
Domestic Science and Art—A Model
House for Observation and Practical
Work." The supervisors were much in-
terested and asked many questions,
among others why the college did not
have such a model house. In explana-
tion, the rapid growth of the institu-
tion and the need of equipment in many
of the departments were shown, but
the promise was made that such an ad-
dition, as well as some others equally
desirable, would be made for next
year's Summer session, if the Legis-
lature of 1911 will do its duty.

Much interest was manifested in
China Urged to Ratify Loan.



TAFT'S SUMMER HOME AT BURLEY, ENTRANCE TO GROUNDS AND ITS
GUARD, AND HALLWAY AND STAIRCASE OF THE HOUSE.

ESCAPED CONVICTS
CLUB FARM-HAND

After Nearly Killing Man, Two
Felons Steal His Wagon and
Kidnap Son.

FUGITIVES ELUDE PURSUIT

Leaving State ePenitentiary Saturday,
"Trusties" Have No Trouble
Until Teamster Refuses to
Part With Vehicle.

FORMAL ARGUMENTS FILED

Orchard County and New Asylum
Get Support.

SALEM, Or., June 29.—(Special.)—
Arguments were filed today in the
office of the Secretary of State in favor
of the bill to establish a branch
insane asylum in Eastern Oregon. The
first argument was signed by a com-
mittee composed of N. A. Davis, J. H.
Hall and H. L. Frazier, and the latter
by the Commercial Clubs of Pendleton,
Union and Baker. These arguments
are to be printed in the official cam-
paign textbook.

SEATTLE MEN DECORATED

Japan Recognizes Courtesy Extended
to Its Representatives.

HOME WORK IS DISCUSSED

Summer School Round Table Takes
Up Domestic Science.

SEATTLE, June 29.—J. D. Lowman,
president of the Seattle Chamber of Com-
merce and of the Associated Chambers
of Commerce of the Pacific Coast, has
been decorated by the Emperor of Japan
with the Imperial Order of the Sacred
Treasure in recognition of his courteous
treatment and hospitable attentions to
the honorary Japanese Commercial Com-
missioners in their journey throughout
the United States last year, when they
toured the principal cities of this country
in a special train at guests of the Asso-
ciated Chambers of Commerce.

Years of Suffering

Catarah and Blood Disease—Doctors
Failed to Cure.

Miss Mabel F. Dawkins, 1214 Lafay-
ette St., Port Wayne, Ind., writes: "For
three years I was troubled with catarah
and blood disease. I tried several
doctors and a dozen different remedies,
but none of them did me any good. A
friend told me of Hood's Sarsaparilla.
I took two bottles of this medicine and
was as well and strong as ever. I feel
like a different person and recommend
Hood's to any one suffering from cat-
arrah."

FORMAL ARGUMENTS FILED

Orchard County and New Asylum
Get Support.

SALEM, Or., June 29.—(Special.)—
Arguments were filed today in the
office of the Secretary of State in favor
of the bill to establish a branch
insane asylum in Eastern Oregon. The
first argument was signed by a com-
mittee composed of N. A. Davis, J. H.
Hall and H. L. Frazier, and the latter
by the Commercial Clubs of Pendleton,
Union and Baker. These arguments
are to be printed in the official cam-
paign textbook.

SEATTLE MEN DECORATED

Japan Recognizes Courtesy Extended
to Its Representatives.

HOME WORK IS DISCUSSED

Summer School Round Table Takes
Up Domestic Science.

SEATTLE, June 29.—J. D. Lowman,
president of the Seattle Chamber of Com-
merce and of the Associated Chambers
of Commerce of the Pacific Coast, has
been decorated by the Emperor of Japan
with the Imperial Order of the Sacred
Treasure in recognition of his courteous
treatment and hospitable attentions to
the honorary Japanese Commercial Com-
missioners in their journey throughout
the United States last year, when they
toured the principal cities of this country
in a special train at guests of the Asso-
ciated Chambers of Commerce.

NEW TRIAL DENIED

Dr. Hyde Is Likely, However,
to Win on Appeal.

BAIL TO BE ASKED LATER

Judge Latschaw in Refusing Motion
Declares Rulings Are Supported
by Authorities—Jury Was
Not Unduly Influenced.

KANSAS CITY, June 29.—Dr. B. C.
Hyde, convicted on May 15 last of poison-
ing Colonel Thomas Swope, the million-
aire philanthropist, was denied a new
trial by Judge Ralph S. Latschaw, in the
Criminal Court here today.

The prisoner's attorney immediately
filed a motion for arrest of judgment,
and the judge set Tuesday next as the
time for arguing the point. When this
motion is disposed of next week, the
matter of appeal to the Supreme Court
and a motion to release Dr. Hyde on
bond will be taken up.

Mrs. Hyde sat beside her husband dur-
ing the reading of Judge Latschaw's de-
cision. Neither appeared to be moved by
the court's refusal to grant a new trial.
Hyde smiled back at his wife as he was
returned to his cell.

In regard to the charge of the defense
that he had prejudiced the jury against
the defendant in revoking the latter's
bond and sending him to jail while the
trial was in progress, Judge Latschaw said
that 10 of the jurors had made affidavits
that they did not know Dr. Hyde had
been in prison, and that the jury was
finished and that the jury's verdict was
not influenced by the court's action. Judge
Latschaw said that he exercised the great-
est care to keep from the jury the fact
that the defendant was in jail, and that
the charge that the jury was prejudiced
on this account was not well taken.

He said the prosecutor had lost the
grand jury notes and was therefore dis-
armed, and he did not intend that the
court should lose the prisoner. He said
that had the defendant failed to appear
in court, the court would have been ob-
liged to discharge the jury and the de-
fendant might have been tried at a
later trial because of the publicity
that had been given the evidence against
him.

He said that his action in admitting
evidence relating to crimes charged in
indictments against Hyde other than the
one on which he was tried was legal and
supported by numerous decisions which
he cited. He said that when a series of
offenses tended to grove a general mo-
tive, evidence relating to all of them was
admissible in a trial where only one
specific charge is made.

The court said that it was proper to
admit evidence that the defendant had
used cyanide in committing the crime,
even though the indictment read that the
deceased came to his death by the admin-
istration of strychnine or other poisons.
He said the attorneys for the defendant
had the grand jury notes in their pos-
session and were aware of the fact that
the grand jurors had no knowledge that
cyanide had been used by the defendant.

FORMAL ARGUMENTS FILED

Orchard County and New Asylum
Get Support.

SALEM, Or., June 29.—(Special.)—
Arguments were filed today in the
office of the Secretary of State in favor
of the bill to establish a branch
insane asylum in Eastern Oregon. The
first argument was signed by a com-
mittee composed of N. A. Davis, J. H.
Hall and H. L. Frazier, and the latter
by the Commercial Clubs of Pendleton,
Union and Baker. These arguments
are to be printed in the official cam-
paign textbook.

SEATTLE MEN DECORATED

Japan Recognizes Courtesy Extended
to Its Representatives.

HOME WORK IS DISCUSSED

Summer School Round Table Takes
Up Domestic Science.

FORMAL ARGUMENTS FILED

Orchard County and New Asylum
Get Support.

SEATTLE MEN DECORATED

Japan Recognizes Courtesy Extended
to Its Representatives.

HOME WORK IS DISCUSSED

Summer School Round Table Takes
Up Domestic Science.

SEATTLE, June 29.—J. D. Lowman,
president of the Seattle Chamber of Com-
merce and of the Associated Chambers
of Commerce of the Pacific Coast, has
been decorated by the Emperor of Japan
with the Imperial Order of the Sacred
Treasure in recognition of his courteous
treatment and hospitable attentions to
the honorary Japanese Commercial Com-
missioners in their journey throughout
the United States last year, when they
toured the principal cities of this country
in a special train at guests of the Asso-
ciated Chambers of Commerce.

GRAY'S
Chesterfield
Clothes
TO WEAR JULY FOURTH
Insures you being among
the best dressed men in
Portland. Guaranteed to
retain shape. If front of
coat breaks or loses shape
in one year's wear you can
have a new suit FREE.
They are priced \$20 to \$50.
Topcoats \$25 to \$40. Fine
trousers \$5 to \$10. A pleas-
ure to show you how good
Chesterfield clothes are.
R. M. Gray
273-275 Morrison
at Fourth

DEFY the WIND
Shur-On Eye-glasses
Consider
How much your eyes have done for you.
Have you given them the care and atten-
tion they deserve?
Let us tell you how they are and what they
need. If they need glasses, let us supply
the right ones at the right price.
Columbian Optical Co.
133 Sixth Street

Dr. Wythe's Dentists
148 5th St.
Opposite Meier & Frank's Fifth-st.
Entrance.
Incorporated Under the Laws of
the States of Oregon and
Washington.
HIGHEST CLASS OF WORK. HIGHEST GRADE OF MATERIAL.
Fillings in Gold, Silver, Platinum FULL
and Porcelain.50c to \$1.00 SET
Crown and Bridge Work. \$3, \$4, \$5 TEETH \$5
I AM MAKING A SPECIALTY OF PORCELAIN BRIDGE WORK. This
is, without doubt, the most beautiful and best work known to dental
science. Spaces where one or more teeth have been lost, I replace to
look so natural that detection is impossible. Ask to see samples of this
beautiful work.
All Work Done by Graduate Dentists Who Thoroughly Understand the
Dr. Wythe's System of Painless Dentistry.
OFFICES } Portland, Or., 148 Fifth Street. OFFICES
} Seattle, Wash., 1116 Second Avenue. }

Grand Trunk Pacific Steamships
The New Steel Steamship "Prince Rupert"
Length, 320 feet—Twin Screw—18 1/2 knots per hour—Double Bottom—
Water-tight Bulkheads—Wireless Telegraph.
MOST LUXURIOUS ON PACIFIC COAST.
Seattle to { Victoria, Vancouver, Prince Rupert, Portland Canal,
Queen Charlotte Islands, and Stewart, the New Gold
Fields.
SIX DAYS' CRUISE
Seattle to Stewart and Return \$36.00
Stewart and Return \$48.00
Including Meals and Berths.
Leave Seattle June 19, 25, July 2, 10, 17, 24, at Midnight Sundays.
For tickets and reservations apply to local ticket agents or J. H.
BURGIS, G. A. P. D., Grand Trunk Pacific Steamships, First avenue and
Yeeler Way, Seattle, Wash.

When You Are Sick
THOMPSON EYESIGHT SPECIALIST
Portland's Exclusive Optical Place.
Second Floor, Commercial Building,
FIFTH AND MORRISON.
DON'T GET RUN DOWN
weak acid miasma. If you have Kidney
or Bladder trouble, dull head pains, dis-
tended, nervousness, pains in the back, and
feet tired all over, get a package of Mother
Gray's AUSTRIAN-LEAF, the pleasant
herb cure. It never fails. We have many
testimonials from grateful people who have
used this wonderful remedy. As a regula-
tor it has no equal. Ask for Mother Gray's
Austrian-Leaf at Drugstore or send by mail
for 50 cents. Sample FREE. Address, The
Mother Gray Co., LeRoy, N. Y.