

PROOFS AWAITED OF PEAK ASCENT

Story of Sealing of Mount McKinley Heard With Some Doubt in Seattle.

ROAD MOVEMENT GROWING

Thoroughfares From Queen City to Ocean and to Mount Rainier Are Planned by State Highway Commissioner Bowly.

SEATTLE, April 18.—(Special).—Announcement of the ascent of Mount McKinley, Alaska, by the Fairbanks party, headed by Thomas Lloyd, was received in Seattle with amazement, mingled with incredulity. That the peak which has baffled many explorers should have been conquered in mid-winter appeared beyond belief. It is the highest pinnacle in North America, and ranks among the loftiest in the world, being well up in the scale with the Andes and Himalayas.

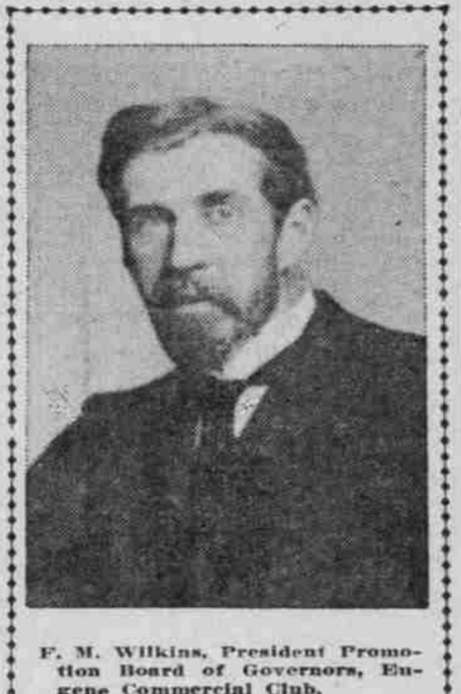
OPEN RIVER FOLK TO EXAMINE LOCKS

Opinion Divided on Buying Old Canal or Constructing New One.

COMMITTEE TO REPORT

Definite Action Will Be Taken at Second Meeting of Association in Albany, April 27.—Freight Rate Issue to Be Studied.

ALBANY, Or., April 18.—(Special).—Dr. W. H. Davis, of this city, who served as chairman of the Open-River and Freight Rate convention held here last week, today appointed a committee consisting of one man from each county in the Willamette Valley to inspect the locks at Oregon City, with a view to recommending that the Open-River Association of the Willamette Valley concentrate its efforts either for the purchase of the old locks by the state and Government, or the construction of new locks on the opposite side of the river.



F. M. Wilkins, President Oregon Board of Governors, Eugene Commercial Club.

represent the state. They do not wish to take any chances on the indictment being quashed, and have "double-shot" the charge. Hodges' trial has been set for April 23. The motion of ex-Mayor John F. Miller for a review of the grand jury proceedings, insofar as they criticized his administration, has been continued for a week.

LABORERS' WAGES RAISED

Railroad Contractors at Chehalis Are Paying \$2.50 a Day.

CHEHALIS, Wash., April 18.—(Special).—The wage scale has gone to \$2.50 a day for ten hours' work on the railroad and other work now under way in that section. Even at that men are reported hard to get and every man who wants to work is employed.

Nazarines Begin Church.

MEMPHIS, Tenn., April 18.—(Special).—The newly organized denomination, The Church of the Nazarine, began the erection of a new edifice this morning at the corner of and Spruce streets. The new building will be 30x50 feet, and will cost upwards of \$2000. The church is a congregation in the city to own its own building.



OFFICERS AND EXECUTIVE BOARD OF TILLAMOOK'S NEWLY ORGANIZED COMMERCIAL CLUB. TILLAMOOK, Or., April 18.—(Special).—The Tillamook Commercial Club, composed of the business men and citizens of Tillamook City and County, have leased the second floor of the Tillamook building for their headquarters and when the carpenters and furnishers get through the club will have as fine rooms as any club in the state. This club was organized to exploit the various resources of Tillamook County and the interest that is being taken by the members of this club shows that it will be a prime factor in the upbuilding not only of Tillamook City but the county as well.

Under Chief C. W. Wappenstein, Seattle, saloons will not close at 12 o'clock Saturday night, but will be permitted to keep open until 1 o'clock Sunday morning. On the other hand, they must remain closed for the single hour between midnight Sunday and 1 o'clock Monday morning, as has been the custom. The practice abolished by the order of the new chief has sprung from a technical observance of the law. He has merely shifted the hour from Sunday night to Saturday night. The hour between midnight, Sunday, and 1 o'clock, Monday, was a sort of hiatus, accidentally omitted from the statute, a fact of which the saloons took advantage. Chief Wappenstein also established a motor cycle squad and a traffic squad, the one to get quick action on distant calls and the other to prevent congestion of vehicles on downtown streets.

McMinnville to Get New Hotel.

MEMPHIS, Tenn., April 18.—(Special).—The erection of another modern hotel building in the city, 73 by 100 feet, three stories and basement, among the probabilities during the early fall, as soon as leases on the grounds expire. The building will occupy the corner of Third and B streets, on the lots of Henry Gee and W. T. Vinton. Preliminary steps toward the formation of a building association have been taken, one of the local bankers and a number of business men being identified with the move.

New Harrow Stolen.

VANCOUVER, Wash., April 18.—(Special).—A harrow, all striped with new paint and decorated as it came from the implement store two weeks ago, was stolen from A. L. Howard, of Minnehaha, yesterday. It had been left in the field. Howard swore out a search warrant to go through the buildings of Mr. Koontz, a neighbor.

Judge Reprimands Lad.

VANCOUVER, Wash., April 18.—(Special).—Wesley Ferguson, 12 years old, charged with going through the pockets of a drunken man at Second and Main streets Saturday, was released with a reprimand from Judge Bingham today.

Portland's Largest Homefurnishers

Tull & Gibbs, Inc.

MORRISON AT SEVFNTH

Homefurnishing Goods Sold on Easy Payments

Agents for L. & J. G. Stickley's Handcraft Furniture—Most Complete Showing of Handcraft Furniture in the Northwest—We Make to Order and Make Over Hair Mattresses and Box Mattresses. Furniture Upholstered, Repaired and Refinished.

Continuing Yesterday's Interesting Event—The Sale of Women's and Misses' Wash Dresses

Model 106 at \$3.95, Model 102 at \$3.45, Model 136 at \$2.95, Model 132 at \$3.45, Model 109 at \$4.45

Today Ends These Bargains in Crockery

A jobber's lot of one pattern in Meakin's best English Semi-Porcelain was picked up by us at an unusual discount. Hence, these remarkably low prices.

- 5-inch Plates, special at, each.....6c
- 6-inch Plates, special at, each.....7c
- 7-inch plates, special at, each.....9c
- 8-inch Plates, special at, each.....10c
- Oatmeal Bowls, special at, each.....6c
- Soup Plates, special at, each.....9c
- Tea Cups and Saucers, special, each.....9c
- Coffee Cups and Saucers, special, each.....13c
- Jugs in four sizes, special at 49c each, at 33c each, at 17c each and at, each.....13c
- Gravy Bowls in two sizes, special at 6c each and, each.....10c
- 8-inch Platters, special at, each.....13c
- 10-inch Platters, special at, each.....21c
- 12-inch Platters, special at, each.....38c
- 14-inch Platters, special at, each.....48c
- 7-inch Bakers, special at, each.....19c
- 8-inch Bakers, special at, each.....24c
- 9-inch Bakers, special at, each.....36c
- 8-inch Scallop, special at, each.....13c
- 7-inch Scallop, special at, each.....19c
- 8-inch Scallop, special at, each.....21c
- 9-inch Scallop, special at, each.....36c
- 4-inch Fruit Dishes, set of 6, special at,.....22c
- 4 1/2-inch Fruit Dishes, set of 6, special, set,.....24c
- Ind. Butter Dishes, set of 6, special at, set,.....10c
- 8-inch Covered Dishes, special, each.....61c
- Covered Butter Dishes and Drainers, special 49c
- Pickle Dishes, special at, each.....19c
- Sauce Boats, special at, each.....19c
- Tea Pots, special at, each.....39c

Specials in Lace Curtains, Curtain Fabrics and Couch Covers

Fixing-up time in the home suggests among the many needed things the window hangings. These economies should prove both suggestive and helpful to many. Today only.

- \$2.15 Pair for Lace Curtains Worth \$3.50 and \$3.75 Pair.
- Cluny Lace Curtains in eoru tint and 2 1/2 yards long. Of good quality net, finished with cluny edgings and insertions.
- \$5.75 Pair for Lace Curtains Worth \$7.50 and \$8.00 Pair.
- Also the popular Cluny Lace Curtains, 2 1/2 yards long and in a good grade of eoru-tint net, finished with pretty cluny edgings and insertions.
- 70c Yard for fancy Curtain Nets, 45 inches wide, in white and cream. Regular \$1 yard and \$1.25 yard values.
- 25c Yard for pretty Curtain Serims, in white, eoru and cream, 40 inches wide and in crossbar figures. Regular 35c yard and 40c yard values.
- 25c Yard for Cretonne that is 36 inches wide, in several colors, with white or cream ground. Regular 35c yard and 40c yard values.
- \$4.25 Each for Couch Covers that are 3 yards long and 60 inches wide and sell regularly at \$7.25 each. Come in Oriental designs and colorings.

Graniteware Sale ENDS TODAY

A list that is varied enough and values so interesting as to make it worth your while to lay in a stock for home or Summer cottage use. Basement.

- 35c for 14-quart Dish Pans, worth 60c each.
- 35c for 6-quart Berlin Kettles, worth 60c each.
- 32c for 10-quart Water Pails, worth 50c each.
- 39c for 12-quart Water Pails, worth 60c each.
- 44c for 14-quart Water Pails, worth 70c each.
- 15c for size No. 28 Wash Basins, worth 25c each.
- 18c for 10-in. Fry Pans worth 30c ea.
- 18c for Skimmers worth 15c each.
- 18c for size No. 20 Lipped Sauce Pans, worth 25c each.
- 22c for size No. 22 Lipped Sauce Pans, worth 30c each.
- 9c for 1 1/2-quart Pudding Pans, worth 25c each.
- 16c for 4-quart Pudding Pans, worth 25c each.
- 18c for 6-quart Pudding Pans, worth 30c each.
- 6c for 12-inch Basting Spoons, worth 10c each.
- 9c for 9-in. Jelly Cake Pans, worth 15c each.
- 18c for size No. 22 Mixing Bowl, worth 25c each.
- 21c for size No. 24 Mixing Bowl, worth 30c each.
- 11c for size No. 1 Bread Pans, worth 15c each.
- 13c for size No. 2 Bread Pans, worth 20c each.
- 17c for size No. 3 Bread Pans, worth 25c each.

Agents for Leonard Cleanable Refrigerators—Sold on Liberal Payment Plan

Gas Ranges, Sewing Machines, Lawn Mowers, Lawn and Garden Tools—Basement

COOS BAY ROAD ON

New Corporation Has Capital Stock of \$4,000,000.

NORTHWESTERN IN DEAL

Coos Bay & Central to Take Place of Coos Bay, Oregon & Idaho—Valuable Terminal Property Secured in North Roseburg.

FREE! FREE! FREE!

\$800 PLAYER PIANO Besides \$10,225 IN OTHER VALUABLE GIFTS

Hovenden-Soule Piano Co. 106 Fifth Street.

RIPE, RICH AND MELLOW

UNIQUE IN PURITY. OF HIGHEST STANDARD IN QUALITY. GUARANTEED BY ITS PROPRIETORS UNDER THE NATIONAL PURE FOOD LAW AN ABSOLUTELY PURE RYE WHISKEY

HUNTER BALTIMORE RYE

Hovenden-Soule Piano Co. 106 Fifth Street.

Auto Roads to Be Built.

Road-building in Washington is assuming a record proportion. If the plans of State Highway Commissioner H. L. Bowly are carried into effect, Seattle will have an automobile thoroughfare to the Pacific coast by way of Tacoma and Shelton. There will also be a direct route from this city to Mount Rainier National Park. A portion of the highway a trail has been made by General George B. McClellan on the historic expedition during which he brought the first wagon across the Cascade mountains. The prospect of heavy automobile travel to Mount Rainier has influenced E. S. Hall, superintendent of the reserve, to write to James D. Hoge, of Seattle, summarizing the regulations that will be in force in particular, the superintendent wishes the knowledge to be as widely disseminated as possible that automobile permits will be issued at the entrance to the park, and all other park business transacted at this point. This information will be carefully noted by certain Seattle people who last Summer drove their automobiles into the park without permission and were put to considerable expense and annoyance before they could rescue them from the park authorities.

One of the twentieth century ideas to strike Seattle is the "workhorse parade," on which occasion it is proposed to assemble all the broken-down draft animals and give them a chance to show off their remaining good points. It has happened that May 31 has been selected for the parade, and in consequence the Grand Army is up in arms against the plan. Stevens Post and Sexton Post have each adopted resolutions opposing the display of workhorses on Memorial Day; but the management of the parade proposes to go ahead, believing that they will not be seriously interfered with the observance of the day by the old soldiers.

Georgetown Now Seattle.

The last formal step for the admission of Georgetown was taken Tuesday afternoon, when the certificate of annexation as executed by the Secretary of State was filed with City Com. W. J. Bothwell. The matter was considered to be of so great importance that as soon as Mayor Hiram C. Gill signed the ordinance, Monday evening, it was intrusted to a special messenger, who took it to the Secretary of State, saw personally that the formalities were observed, and then hastened back to this city with the precious document. Annexation was completed with a scant 30 hours between the last formal act and the beginning of the thirtieth census—but there was time enough for the purpose of increasing Seattle's population. The affairs of the municipality are being wound up rapidly. The is