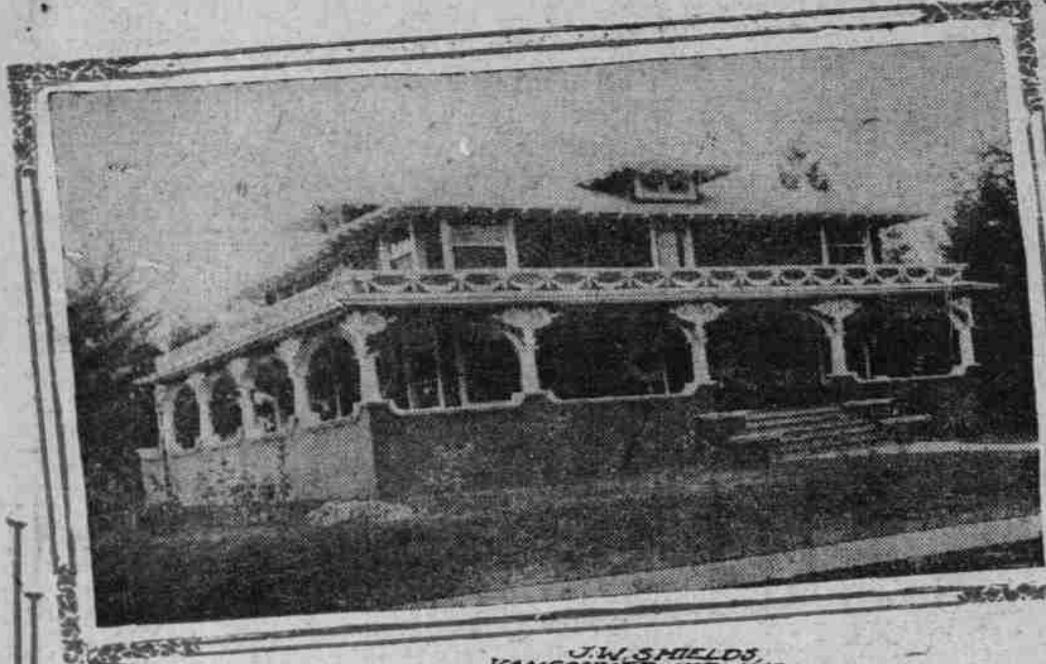


SOME OF PORTLAND'S BEAUTIFUL HOMES BUILT IN 1909



J.W. SHIELDS, VANCOUVER AVE AND TILLAMOOK ST.



E.L. THOMPSON, 21ST AND CARTER STREETS



VICTOR THAMES BLACK FOREST CHATEAU ON COGNOL CREST



J. A. VENESS,

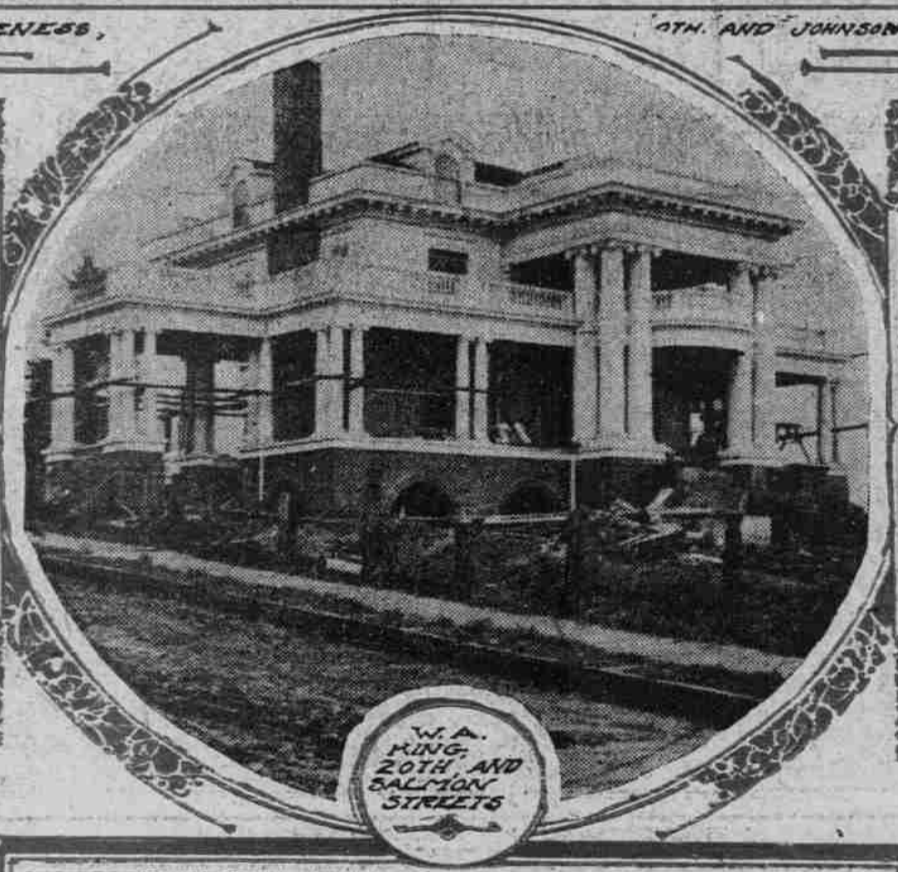
9TH AND JOHNSON STS.



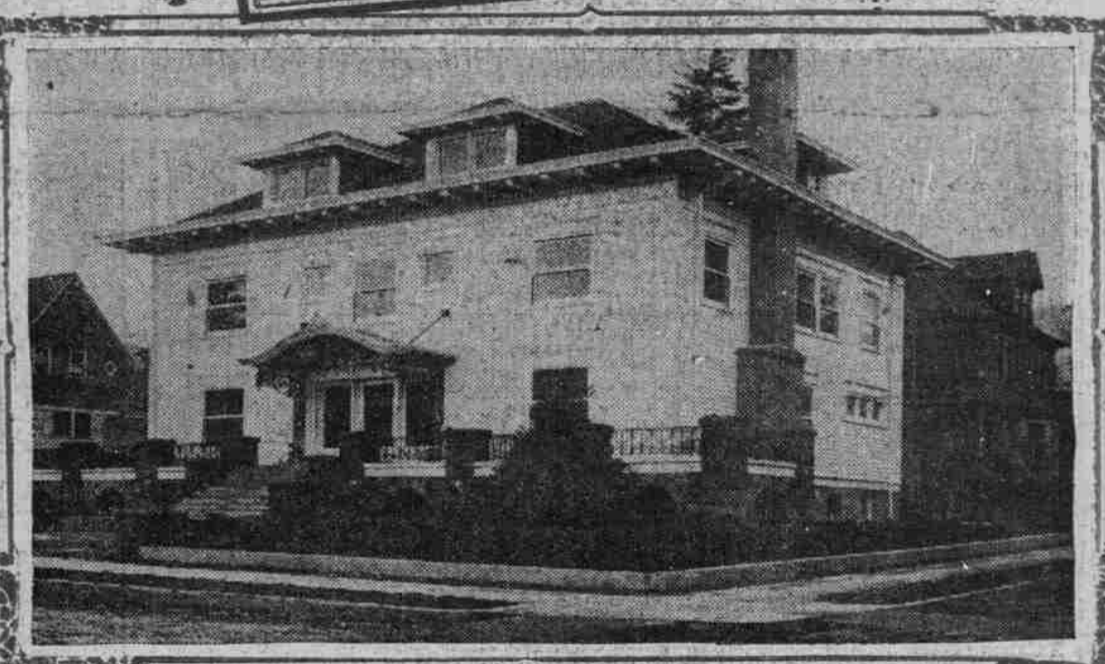
C.E. KRAUSER, 785 HOYT STREET



PHILIP BUEHNER, 22ND AND LOVEJOY STREETS



W.A. KING, 20TH AND SALMON STREETS



W.C. BRISTOL, 22ND AND LOVEJOY



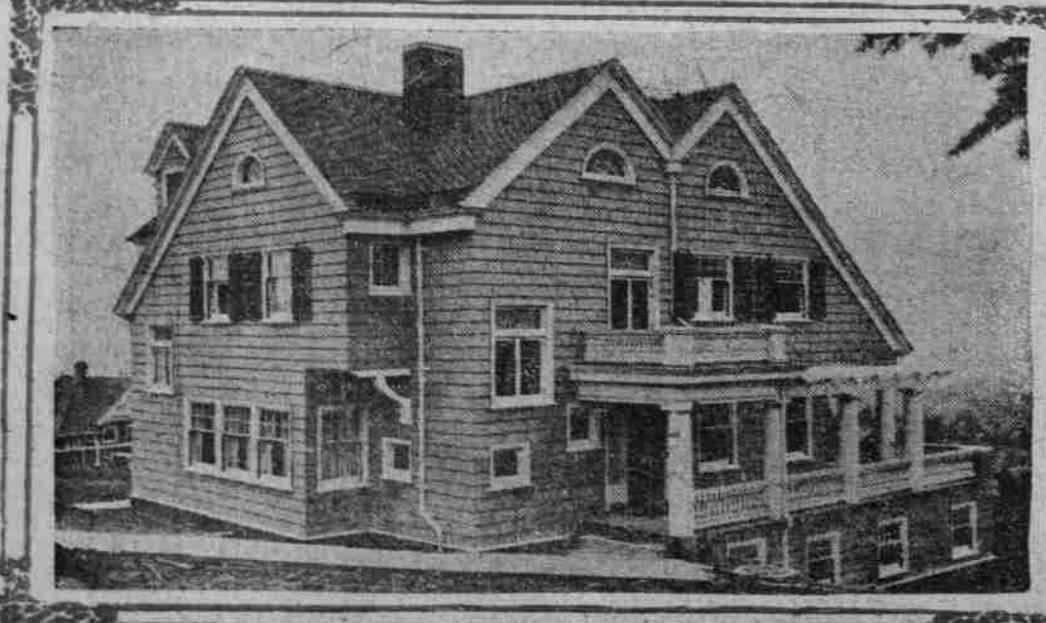
H. M'CONRACK, E. 27TH AND E. SALMON



FLETCHER LINV, 19TH AND SALMON STS.



L. B. MENITZ, 16TH AND MYRTLE STS.



DR. HENRY JONES, 21ST STREET, NEAR CARTER



E.C. WASSERMAN, 304 EAST SEVENTEENTH STREET, NORTH



JOSEPH SNEHANSKI, 741 IRVING STREET