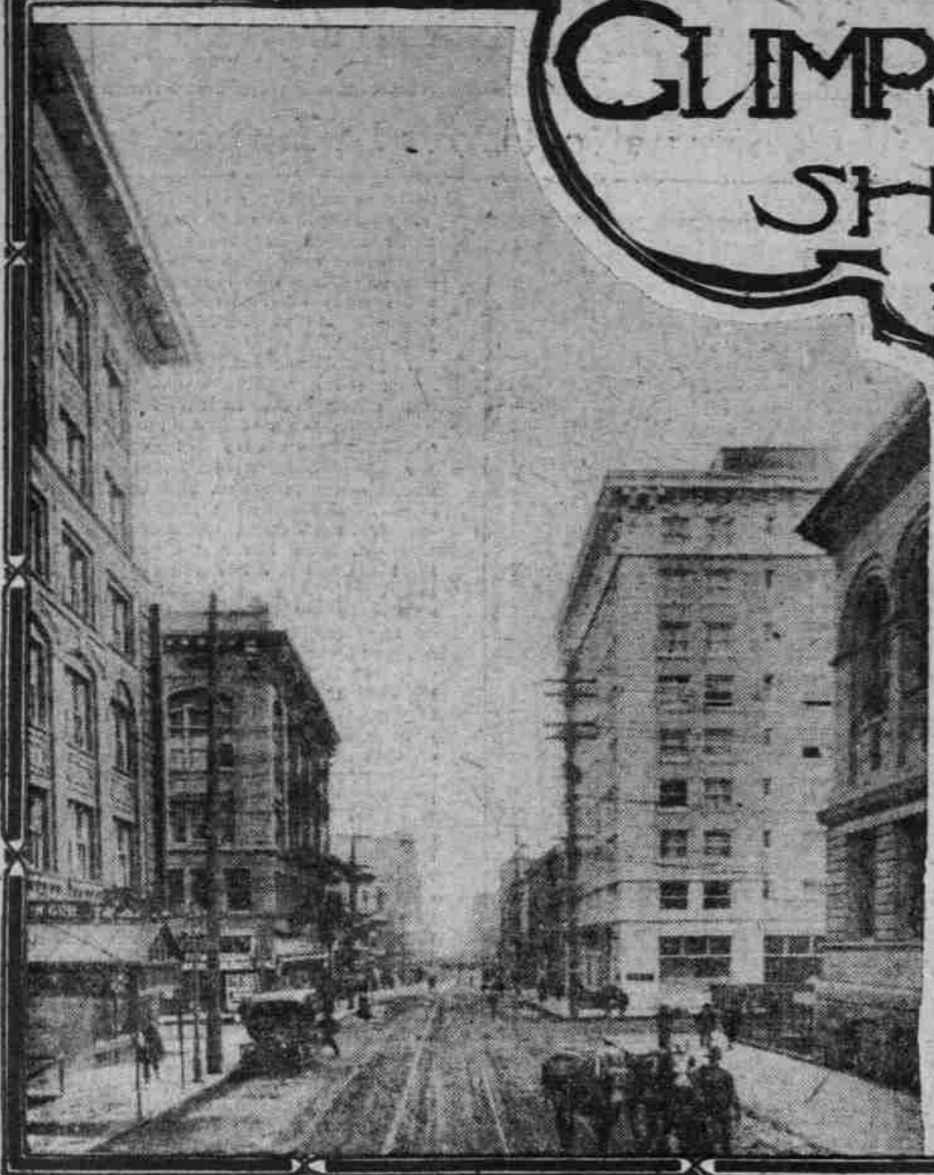


GLIMPSES OF PORTLAND STREETS SHOWING SUBSTANTIAL BUSINESS BLOCKS



LOOKING EAST ON STARK FROM PARK



LOOKING NORTH ON MORRISON FROM PARK



FIFTH STREET, LOOKING NORTH FROM MORRISON

EAST ON MORRISON STREET FROM SIXTH



MORRISON STREET, WEST FROM FIFTH



FOURTH STREET, NORTH FROM STARK



FIFTH AND WASHINGTON, ONE OF PORTLAND'S BUSY CROSSINGS

SEVENTH STREET, NORTH FROM WASHINGTON



OAK STREET'S FINE OFFICE BLOCKS