

We are Portland Agents for "Nemo" and Mme. Irene Corsets, Gossard Lace Front Corsets, Butterick Patterns, "Vudor" Porch Shades

# The Meier & Frank Store Monday Bargain Bulletin

## The Great Expansion-Alteration Sale Continues in All Depts.

### Hosiery Bargains

5000 pairs women's Summer weight black lisle finished Hose, with white tip heel and toe, all sizes, full-fashioned, on sale at a low price **28c**  
50c VALS, AT, THE PAIR  
3000 pairs of women's outside black cotton Hose, elastic ribbed top, full fashioned, Hermsdorf dye; come in all sizes—great special values **35c**  
50c VALS, AT, THE PR.  
Misses' fine ribbed lisle Hose, extra long; blacks and tans, all sizes; best 35c values, at this price, pair, **25c**  
5000 pairs of boys' 1 1/2 rib black cotton Hose, medium weight, **12 1/2c**  
Great values, at the pair  
Great Sale of Go-Carts—4th Floor.  
Great sale of Curtains—Third Floor.

### Ladies' Neckwear

#### \$1.50 Values 89c

Great special lot women's fine stocks, rabats, jabots and cape collars in lace and lace-trimmed effects; new, beautiful and exclusive pieces; **89c**  
\$1.25 and \$1.50 values, each  
2000 dozen women's embroidered Collars, 50 choice patterns, in medium heights, all sizes; best regu- lar 25c and 35c values, at, ea. **21c**

### Dutch Collars 18c

200 dozen embroidered starched Dutch Collars, large assortment of new patterns, in all sizes; the best **18c**  
regular 35c values, on sale at  
All lines of women's Neckwear on sale at very low prices. Let us show you. Special values in women's Underwear.

### "Nemo" and "Estelle" Corsets

#### \$3.50-\$5 Values at \$2.29 Pr



In our Corset Store, Second Floor, an unusual offering of the celebrated "Nemo" and "Estelle" Corsets—1000 pairs to be sold at a price far below regular value. The best long and short hip models are included—white only—sizes 18 to 36, inclusive—Corsets selling regularly at prices ranging from \$3.50 to \$5.00 a pair—your choice **\$2.29** today and tomorrow at, per pair **\$2.29**  
Every pair will be fitted by one of our experts

### 35c Handkerchiefs at 15c each

### 25c Handkerchiefs at 15c each

200 dozen women's swiss embroidered Handkerchiefs, in scalloped and hemstitched edges; best styles in great variety **15c**  
for your selection; values up to 35c, on sale at, each  
100 dozen sheer linen hand-embroidered Handkerchiefs, initial, crossbar and plain effects; best 25c values, on sale at, ea. **15c**

### Great Sale 100 Linen Table Cloths

#### \$5 Values at \$4 Each—\$6 Values at \$5 Each

Great special sale of hemstitched linen Cloths and Napkins—very best patterns, superior qualities. Values extraordinary, on sale at the following special prices—take advantage.  
2x2 1/2-yards Cloths—napkins to match—\$5.00 values, on sale at this price, each. **\$4.00**  
2x3-yard Cloths—napkins to match—regular \$6.00 values, at this low price, ea. **\$5.00**  
22-inch Napkins to match the above cloths—great values, on sale at, special, doz. **\$5.00**

### \$13.50-\$20 French Gowns \$9.95

### \$4.50-\$6 French Drawers \$2.75

A very attractive bargain in women's fine French hand-embroidered Nightgowns, made of the best quality French nainsook and batiste, also lace-trimmed novelties; all new, exquisite pieces, selling regularly at \$13.50 to \$20 each—choice at this wonderfully low price, each **\$9.95**  
Special lot of hand-made and hand-embroidered Drawers, also lace-trimmed novelties; finest materials, etc. **\$4.50** to \$6 values, on sale at this very low price, pair **\$2.75**

### \$10 Comb'n Garments \$5.98

A great offering of fine cambric and nainsook Combination Garments, trimmed in lace edgings and insertions, embroidery edgings and insertions, beadings, ribbons, etc.; all new, beautiful styles; values ranging from \$7.50 to \$10.00, **\$5.98** on sale at this unusually low price, the garment

### Infants' Wear Greatly Reduced

Our entire stock of children's lawn and nainsook Dresses on sale at greatly reduced prices; ages 6 months to 3 years; all new, pretty styles; best bargains ever offered—2d Floor.

### 25c, 35c Veiling on Sale at 10c Yd

### \$1.50 Long Silk Gloves at 75c Pr

10,000 yards of new mesh Veilings, tuxedo, plain and dotted nets; very best styles **10c** and effects; great variety for your selection; best 25c and 35c values, at, yard  
Continuation of the great special sale of 16-button length Silk Gloves, in black, white and colors; best makes; Kayser, Niagara and Groversville makes; come in all sizes; the **75c** best regular \$1.50 values—buy all you want of them at this special low price, pair  
Mail orders will receive our prompt and careful attention. You will do well to order early.

### 45c Embroid'ry 19c

10,000 yards of swiss, nainsook and cambric Embroidery Edges and Insertions; very large variety of patterns, suitable for infants' and children's wear; widths from 1 to 6 inches; regular values up to 45c the yard, **19c** on sale at this low price, yd.

### \$1.25 Laces 25c

### \$2.00 Laces 39c

Great special sale of white and cream imitation Irish and Venise Lace Bands, Edges and Appliques, 1 to 3 inches wide; suitable for dress trimming; immense variety, exceptional values, on sale at the following prices: **\$1.25 values 25c—\$2.00 values 39c**

### Bathing Suits

#### \$2 to \$18 Per Suit

The largest and most complete line of Bathing Suits in the city; all sizes and grades for women, men and children. The women's and children's styles are in blue, black and red alpaca and mummy cloth; some Duteh necks, others with sailor collars and trimmed with fancy braids, full skirts, etc.; best values, at \$2 to \$18 suit. Bathing Caps and Shoes at all prices, on sale in the Men's Furnishing Section, Main Floor. Let us show you.

### Fine Lingerie Waists at One-Half



Sweeping reductions on our entire stock of women's fine Lingerie Waists, both Paris and American models, in beautiful styles. They are trimmed in fine and coarse laces, pin tucks, German a laces, round mesh laces, Venise laces, plat Val. laces, Irish crochet and medallions; all new styles, in variety large enough to please every individual fancy. Waist bargains you never before had the opportunity to share in; take advantage. In the Second Floor Suit Section. Regular \$5.00 Waists at **\$2.50**  
Regular \$6.00 Waists at **\$3.00**  
Regular \$7.50 Waists at **\$3.75**  
Regular \$9.00 Waists at **\$4.50**

Regular \$10.00 Waists, at, ea. **\$ 5.00**—Regular \$22.00 Waists, at, each. **\$11.00**  
Regular \$12.00 Waists, at, ea. **\$ 6.00**—Regular \$25.00 Waists, at, each. **\$12.50**  
Regular \$15.00 Waists, at, ea. **\$ 7.50**—Regular \$27.00 Waists, at, each. **\$13.50**  
Regular \$18.00 Waists, at, ea. **\$ 9.00**—Regular \$30.00 Waists, at, each. **\$15.00**  
Regular \$20.00 Waists, at, ea. **\$10.00**—Regular \$35.00 Waists, at, each **\$17.50**

### 1000 Petticoats at \$1.69 Each

In the Petticoat Department, 1000 of Grandmother's Taffeta Petticoats, every one fully guaranteed; rustle like silk and wear better; made with double flounce, cluster of pin tucks and three rows of 3-inch tailored bands; rows of pin tucks and two rows of quarter-inch bias bands; wonderful values, on sale, special, ea. **\$1.69**  
Great special values in popular-priced Shirtwaists—let us show you. Second Floor.

### Ladies' \$20 Coats \$8.85 Ea



In the big Second-Floor Garment Store another sensational sale Women's Coats in long, short and medium lengths—Great special purchase from a leading New York manufacturer enables us to offer values up to \$20 each at the low price of **\$8.85**. Included are strictly tailored coats in coverts, serges and worsteds, tight and semi-fitted effects, single or double breasted—Silk coats in taffeta or bengaline, plain and braid trimmed—Three-button styles with notch or standing collars, also full length coats in bengaline silks, taffeta silks, serges, rajahs and worsteds—Tans, navy, white, champagne, rose, black, blue, copenhagen and green, also checks, stripes and mixtures—Coats for all occasions and all purposes—Values up to \$20 each—Your choice **\$8.85** at this exceptional low price **\$8.85**

### \$35.00 Suits \$13.65

An exceptional offering of women's tailored Suits in serges, panama cloths, tweeds and worsteds; navy blue, black, green, tan, rose, wistaria and all the leading shades, as well as checks, stripes and fancy mixtures; long jackets, semi or tight-fitting effects; strictly tailored garments or fancy braid and Persian trimmed; all sizes, large assortment; values up to \$35.00, at, suit **\$13.65**

### Women's Linen and Rep Suits

#### \$10 Vals. at Reduced Price \$5.98

Just received, another great shipment of the popular linen and rep Suits in tailor-made effects; long jackets with three-seam or French backs; single-breasted, notch collar and small revers; white, blue, pink, natural, lavender, green, tan; well made and finished; values up to \$10.00 a suit; your choice, on sale at, suit **\$5.98**  
Complete line of women's Riding Habits and Skirts at all prices. Let us show you.

### \$2.50 Embroid'ry Flouncing 98c

### \$2.00 Waist Nets at 79c per Yard

1500 yards 27-inch Swiss Embroidery Flouncing, for lingerie gowns, waists, etc.; **98c** beautiful designs in filet, eyelet and Japanese effects; values to \$2.50 a yard  
Two big special lots of 45-inch Nets for waists, yokes and sleeves; white, cream and colored effects; stripes, dots and figures; all new, handsome styles and the best values ever offered at these low prices. On sale at the following special prices. See them. Regular \$1.50 values, special, yard, **59c**—Regular \$2.00 values, special, yard, **79c**

### 60c Printed Silk Mulls 35c Yd

3000 yards of printed Silk Mulls in new, pretty styles for Summer apparel of **35c** all kinds; great variety; regular 50c and 60c values, on sale at, special, yard  
1000 yards white embroidered Swiss in very handsome styles; 75c values, yard. **50c**  
**30c Towels** 2000 dozen hemstitched Huck Towels, size 24x40 ins.; best regular 30c values, on sale at this low price, each  
**At 19c Ea.** 5000 yards of 17-inch linen Crash—the grandest value **9c** ever offered at this price, yard—take advantage of sale

### MACHINE KILLS LAD

Julius Rozeen, 4 Years Old, Is Run Down by Chauffeur.

### WILL EASTMAN ARRESTED

Bystanders Say That Children Were Dodging in Front of Passing Autos and That Victim Tripped Before Struck.

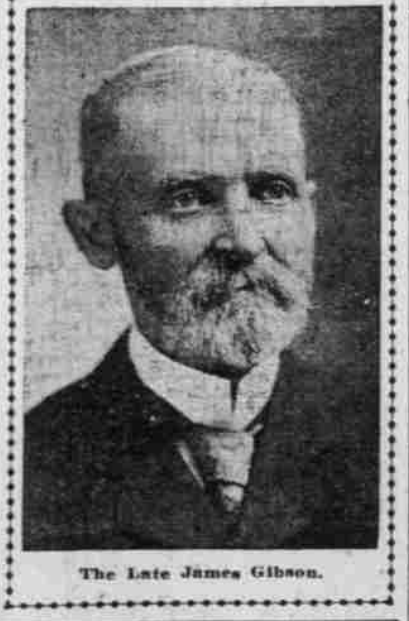
Julius Rozeen, 4 years old, of 5 Hibbard street, Montavilla, the son of Morris Rozeen, who had but a week or so ago been returned to his parents by the police after a runaway escapade, was yesterday run down and killed by an automobile just beyond the end of the Montavilla carline. The machine, a heavy touring car, was owned and driven by Will Eastman, of 418 Broadway. Eastman, who operates the machine in livery, was later in the night arrested and brought back to the city.  
According to reports of bystanders who saw the accident, little Julius, with some other children, was playing in the roadway, and the children were indulging in the pastime of running back and forth in front of approaching automobiles. As Eastman's machine came along, Julius was standing in the middle of the roadway, looking in the opposite direction, and did not hear the approach of the car.  
His playmates shouted to him, but Julius misunderstood their cries, and turning, saw the big car bearing down upon him. Eastman, who was driving at a fair rate of speed, saw the boy standing in the center of the roadway, and veered to one side to pass him; but the boy, thinking himself in danger, turned and ran for safety, in so doing dashing in front of the car and tripping in his flight. Before Eastman could avert and avoid the child, the big car ran the boy down, crushing him like a tin can.  
Eastman stopped the car as soon as

### possible, and, after seeing that nothing could be done for the boy, who was at once examined by a doctor, gave his name and continued on his way with his party. Later in the night officials from the District Attorney's office went out and arrested Eastman, taking along another chauffeur to handle his car.

### VETERAN ANSWERS CALL

James Gibson, Portland Resident for 20 Years, Dies of Paralysis.

James Gibson, 63 years old, Civil War veteran and resident of Portland for the last 20 years, died at the Good Samaritan Hospital early yesterday morning as



The Late James Gibson.

### 767 ARRIVALS DAILY

July Tourist Travel Keeps Portland Hotels Full.

### RECORD OF NINE IS BIG

Last Week's Roll of Visitors Exceeds June by 223—Every Month This Year but March Shows Gain.

### MILL PRESIDENT IS BACK

Head of Monarch Company Closes Deal While Abroad.

Lester W. David, president of the Monarch Mill Company, which is now building a 200,000 capacity plant on the Peninsula, reached Portland yesterday after a five months' business trip to Europe. Mr. David spent most of the time he was away in London, although he also visited Paris, and on his return stopped at the principal Eastern cities of the United States. It is understood that while he was in Europe he closed a transaction involving a large tract of timber in British Columbia. Mr. David, at the Oregon Hotel last night, declined to discuss the details at this time.  
Mr. David left Portland on the day the first pile for the Monarch Lumber Company's new mill was driven on the Peninsula.  
"I have not had an opportunity to go over business matters since my return," said he yesterday, "and do not know just how soon the new mill will be ready to operate. The plant will have a capacity of 20,000 feet an hour."

### THOUSANDS TO GO

Portland Day Excursionists Will Boost City.

### TWO SPECIALS OFF TODAY

Throng of Local Campaigners for "500,000 in 1912" to Make Exposition Celebration Ring. Mayor Simon to Speak.

### THOUSANDS TO GO

Thoroughly imbued with the spirit of "Portland 500,000 in 1912," approximately 2000 residents of this city will go to Seattle today to assist in making Portland day a notable success in its celebration at the Alaska-Yukon-Pacific Exposition tomorrow. From the time the excursionists leave until they return, it will be a case of continuous boost by energetic boosters for a greater Portland three years hence. Invitations to be entertained by the Oregon Commission and the Seattle Chamber of Commerce have been declined by the members of the boosting committee, which organized the excursion. The invading party is going to Seattle with the settled intention of assisting to entertain and not to be entertained.  
The first installment of Portland people will leave for the exposition city in a special train over the Northern Pacific at 7:30 o'clock this morning. Another special excursion train will leave the Union Depot at 11:20 o'clock tonight. Both trains will run through without any stops, the morning train reaching Seattle about 1:30 o'clock this afternoon, while the night train will arrive about 7 o'clock tomorrow morning. The accommodations for the two special trains have been practically sold out yesterday, many Portland people will make the trip on the regular Northern Pacific

### THOUSANDS TO GO

Portland Day Excursionists Will Boost City.

### TWO SPECIALS OFF TODAY

Throng of Local Campaigners for "500,000 in 1912" to Make Exposition Celebration Ring. Mayor Simon to Speak.

### THOUSANDS TO GO

Thoroughly imbued with the spirit of "Portland 500,000 in 1912," approximately 2000 residents of this city will go to Seattle today to assist in making Portland day a notable success in its celebration at the Alaska-Yukon-Pacific Exposition tomorrow. From the time the excursionists leave until they return, it will be a case of continuous boost by energetic boosters for a greater Portland three years hence. Invitations to be entertained by the Oregon Commission and the Seattle Chamber of Commerce have been declined by the members of the boosting committee, which organized the excursion. The invading party is going to Seattle with the settled intention of assisting to entertain and not to be entertained.  
The first installment of Portland people will leave for the exposition city in a special train over the Northern Pacific at 7:30 o'clock this morning. Another special excursion train will leave the Union Depot at 11:20 o'clock tonight. Both trains will run through without any stops, the morning train reaching Seattle about 1:30 o'clock this afternoon, while the night train will arrive about 7 o'clock tomorrow morning. The accommodations for the two special trains have been practically sold out yesterday, many Portland people will make the trip on the regular Northern Pacific

### THOUSANDS TO GO

Portland Day Excursionists Will Boost City.

### TWO SPECIALS OFF TODAY

Throng of Local Campaigners for "500,000 in 1912" to Make Exposition Celebration Ring. Mayor Simon to Speak.

### THOUSANDS TO GO

Thoroughly imbued with the spirit of "Portland 500,000 in 1912," approximately 2000 residents of this city will go to Seattle today to assist in making Portland day a notable success in its celebration at the Alaska-Yukon-Pacific Exposition tomorrow. From the time the excursionists leave until they return, it will be a case of continuous boost by energetic boosters for a greater Portland three years hence. Invitations to be entertained by the Oregon Commission and the Seattle Chamber of Commerce have been declined by the members of the boosting committee, which organized the excursion. The invading party is going to Seattle with the settled intention of assisting to entertain and not to be entertained.  
The first installment of Portland people will leave for the exposition city in a special train over the Northern Pacific at 7:30 o'clock this morning. Another special excursion train will leave the Union Depot at 11:20 o'clock tonight. Both trains will run through without any stops, the morning train reaching Seattle about 1:30 o'clock this afternoon, while the night train will arrive about 7 o'clock tomorrow morning. The accommodations for the two special trains have been practically sold out yesterday, many Portland people will make the trip on the regular Northern Pacific

### THOUSANDS TO GO

Portland Day Excursionists Will Boost City.

### TWO SPECIALS OFF TODAY

Throng of Local Campaigners for "500,000 in 1912" to Make Exposition Celebration Ring. Mayor Simon to Speak.

### THOUSANDS TO GO

Thoroughly imbued with the spirit of "Portland 500,000 in 1912," approximately 2000 residents of this city will go to Seattle today to assist in making Portland day a notable success in its celebration at the Alaska-Yukon-Pacific Exposition tomorrow. From the time the excursionists leave until they return, it will be a case of continuous boost by energetic boosters for a greater Portland three years hence. Invitations to be entertained by the Oregon Commission and the Seattle Chamber of Commerce have been declined by the members of the boosting committee, which organized the excursion. The invading party is going to Seattle with the settled intention of assisting to entertain and not to be entertained.  
The first installment of Portland people will leave for the exposition city in a special train over the Northern Pacific at 7:30 o'clock this morning. Another special excursion train will leave the Union Depot at 11:20 o'clock tonight. Both trains will run through without any stops, the morning train reaching Seattle about 1:30 o'clock this afternoon, while the night train will arrive about 7 o'clock tomorrow morning. The accommodations for the two special trains have been practically sold out yesterday, many Portland people will make the trip on the regular Northern Pacific



231 WASHINGTON ST. PORTLAND OREGON. MAKER OF MENS CLOTHES

Smith will pay 3 1/2 cents for good young veal up to 130 pounds. Smith will pay 10 1/2 cents for dressed pork that is sweet, young and fat. Any size.  
Smith can use large veal of any size and will pay what it is worth. Smith wants Spring chickens and will pay from 16 cents to 18 cents for them.  
Smith will pay 14 cents for hens. Smith will pay 25 cents for good fresh eggs.  
Ship all of your produce to Smith direct and you will get your check by mail at once. Address FRANK L. SMITH MEAT CO. "Fighting the Beef Trust" Portland, Or.