

"Ostermoor" Patent Elastic Felt Mattresses—"Vudor" Porch Shades in All Sizes—Butterick Patterns and Publications—"Nemo" Corsets

Great June Sales at The Meier & Frank Store

Sale 1000 Tailored Suits

\$22.50 Vals. \$11.85—\$30 Vals. \$14.85
\$35.00 Vals. \$17.45—\$45 Vals. \$22.45

Great June sale of women's and misses' Tailored Suits—1000 garments for your selection—This season's most attractive styles and materials in medium and long coats—semi and tight-fitting effects—Strictly tailored as well as fancy trimmed suits—Panama cloths, serges, prunella cloths and fancy worsteds—Skirts plain gored with panel front and trimmed to match the coat—Black, navy blue, green, rose, tan, brown, wistaria, also invisible plaids, stripes and checks—Suits to please every individual fancy—Four immense lots—Low priced

\$22.50 Values for \$11.85 Suit
\$30.00 Values for \$14.85 Suit
\$35.00 Values for \$17.45 Suit
\$45.00 Values for \$22.45 Suit

Great special June sale of women's fine Lingerie Waists and Tailored Waists in all the season's best styles—values you cannot equal in the city. Take advantage of the sale.

Cut Glass

\$2.25 cut glass Vases for, ea. \$1.79
\$3.25 cut glass Vases for, ea. \$2.59
\$3.25 cut glass Oil Bottles. \$2.59
\$2.00 cut glass Nappies for. \$1.57
\$2.50 cut glass Nappies for. \$1.97
\$3.50 cut glass Nappies for. \$2.77
\$3.25 cut glass Olive Dishes. \$2.57
\$3.50 cut glass Spoon Trays. \$2.77
\$5.50 cut glass Bowls, each. \$4.37
\$7.50 cut glass Bowls, each. \$5.97
\$12.00 cut glass Bowls, each. \$9.57
\$15.00 cut glass Bowls, ea. \$11.97
\$4.50 cut glass Cheese Plates. \$3.57
\$7.00 cut glass Comports at. \$5.57
\$7 cut glass Water Bottles. \$5.57
\$6.50 Sugar and Creamer, set. \$5.17

White Mountain Refrigerators at Reduced Prices

Entire stock at special low prices—this season's best models in all sizes and grades; every one fully guaranteed—on sale at these special prices:
\$10.00 White Mountain at \$8.49
\$13.00 White Mountain at \$10.49
\$16.00 White Mountain at \$10.95
\$17.50 White Mountain at \$13.95
\$21.00 White Mountain at \$16.80
\$27.50 White Mountain at \$21.95
\$32.00 White Mountain at \$25.95
\$35.00 White Mountain at \$27.95
\$45.00 White Mountain at \$35.95
\$70.00 White Mountain at \$55.95
\$100.00 White Mountain at \$77.00
On sale in the Big Basement Store.



Women's Silk Suits

In Pongees, Rajahs, Etc
\$98 Vals. \$38.50

Today the greatest sale of the season in women's high-class fashionable apparel—magnificent three-piece silk suits at a price never before known on apparel of equal style and quality—All the very latest creations in pongee silks, rajah silks, Shantung silks and motora silks—An advantageous purchase from New York's largest and leading manufacturer enables us to offer values up to \$98.00 for the extremely low price of \$38.50—The coats are trimmed in braid and buttons to match the dress, the dresses having gold lace or net yokes, with net or silk sleeves trimmed in fancy braid and buttons—The color assortment includes tans, rose, green, gray, blue, brown and black—All are three-piece suits of exclusive style—Beautifully made and finished throughout—Materials of exceptional quality and strictly high-grade in every particular—There is only about 40 garments in the lot so be sure and plan to be here \$38.50 early if you want best values
No orders shipped C. O. D.—None reserved—See Big Fifth-Street Window Display of Suits



Great June sale of 4000 pairs of new ruffled Swiss Curtains. Four immense lines—made of good quality swiss; plain, dotted, figured and striped—well made and finished—plain 4-inch ruffle—Curtains for your home and beach cottage at a saving every shrewd and economical buyer will appreciate. Mail orders will be promptly and carefully filled—3d floor
\$1.25 Val. 79c Pr.
\$1.75 Val. \$1.15 Pr.
\$2.25 Val. \$1.65 Pr.
\$4.25 Val. \$2.89 Pr.
2000 pairs of ruffled net Curtains, white or ecru, with Renaissance and cotton lace inserting and edges; some with corner motifs; values up to \$4.00 a pair—buy all you want of them at this very low price, pair—take advantage of sale
1000 pairs of white and ecru Nottingham Lace Curtains, 25 patterns to select from; in all the new novelty designs, with plain and point d'esprit centers; 50 inches wide, 3 yards long; best regular \$2.25 and \$2.50 values, on sale at, the pair \$1.65
1000 Japanese Porch Shades, in natural color; three sizes; all complete with ropes and pulleys, ready for hanging, on sale at these low prices:
Japanese Porch Shades 6 feet wide and 8 feet long, for, each. .95c
Japanese Porch Shades 8 feet wide and 8 feet long, for, each. \$1.35
Japanese Porch Shades 10 feet wide and 8 feet long, for, each. \$1.65

Swiss Curtains at Low Prices

Great June sale of 4000 pairs of new ruffled Swiss Curtains. Four immense lines—made of good quality swiss; plain, dotted, figured and striped—well made and finished—plain 4-inch ruffle—Curtains for your home and beach cottage at a saving every shrewd and economical buyer will appreciate. Mail orders will be promptly and carefully filled—3d floor
\$1.25 Val. 79c Pr.
\$1.75 Val. \$1.15 Pr.
\$2.25 Val. \$1.65 Pr.
\$4.25 Val. \$2.89 Pr.



Great Sale 200 S'lk Pet'c'ts

\$30.00 Values at \$8.85
Great June sale of high-grade Silk Petticoats—Plain colors, plaids and Dresdens—All fine underskirts made of superior quality silks and in the very best styles—16 and 20-inch flounces trimmed with silk embroidery, lace, double flounce of pleating, ruching, Van Dyke points, row of half and one-inch stitched bands, silk dust ruffle, etc.—White, pink, light blue, tan, champagne, navy, brown, green and black—High-class silk petticoats at a fraction of their real worth—A special purchase enables us to offer values up to \$30 at low price, each \$8.85

\$2 Val Laces 50c Doz. Yards

\$1 Venise Bands at 19c Yard

Great June sale of 2000 dozen round-mesh and French Val. Lace Insertion and Edging, 1/2 to 1 1/2 inches wide; pretty designs for trimming Summer apparel; regular 50c values up to \$2.00 the yard, on sale at this low price, yard—take advantage
1000 yards of white, cream and ecru Venise Bands and Appliques, 1 to 3 inches wide, suitable for trimming Summer Dresses, etc.; values up to \$1.00, at yard 19c

\$2.00 Embroideries 69c Yard

\$3 Allovers at \$1.19 Yard

5000 yards of swiss, nainsook and cambie Embroidery, Edges, Insertions, Galloons, Flouncings, 1 1/2 to 18 inches wide; beautiful embroideries, in English eyelet and Japanese effects, for lingerie gowns, women's and children's wear; values up to \$2 yard, for 2000 yards of handsome allover Embroideries for yokes and waists; swisses, nainsook and crossbar dimity; white and colors; regular \$3.00 values, on sale at, yd. \$1.19

35c Cotton Suitings at 19c a Yard

35c White Poplins at 21c Per Yard

Great June clearance of Cotton Suitings in all the new, pretty styles; an immense variety for your selection; regular 35c values, on sale at this special price, the yard 200 pieces of new, fine white Poplin for waists, suits and children's apparel; 27 inches wide; unusual value—buy all you want of it at this low price, yard—take advantage
Great special values in Lawns and Gingham—all grades, at low prices. Let us show you.

\$6 Silk Undervests for \$3.50 Each

\$3 Combination Garments \$1.98

Special June sale of women's fine Italian Silk Undervests, hand-embroidered and lace-trimmed; beautiful styles; regular \$5.00 and \$6.00 values, on sale at, each \$3.50
Special lot of women's two-piece Combination Garments—corset cover and drawers combined; cambie, nainsook and crossbar materials, trimmed in lace, embroidery, beading and ribbon; the best regular \$3.00 values, on sale at, special, the garment \$1.98

\$1.50 Long Silk Gloves at 75c Pair

Continuation of the great special sale of women's long Silk Gloves in black, white and colors. All the best makes, with double finger tips; the best regular \$1.50 values; full 16-button lengths. Buy all you want of them at this low price, pair—take advantage
20,000 yards of plain taffeta and fancy Ribbons, 4 and 5 inches wide; all the best colorings and combinations; the best regular 25c and 30c values, on sale at, the yard 17c

85c Women's Drawers 49c

1000 pairs of cambie, nainsook and dimity Drawers, trimmed in Val. lace, torchon lace and embroidery; great assortment; regular 75c and 85c values, on sale at, pair 49c

Infants' Wear at Low Prices

1000 pairs of infants' soft-soled low Shoes; black, white, brown; regular 60c values, at, pair 39c
Children's and infants' white outing flannel Gowns and Wrappers; well made and finished; the best styles, all sizes, 75c values, at 43c

Great Sale of Cream Serge

In the Dress Goods Section, a sale extraordinary of cream serge in three grades; best weaves, unusual values: Regular \$1.25 values, at, yard. \$98c
Regular \$1.75 values, yard. \$1.37
Regular \$2.00 values, yard. \$1.69
2500 yards of splendid quality messaline Silks in black, cream, white and all colors; best \$1 quality, on 79c sale at this special price, yard
Great June clearance sales of all lines of Wool Dress Goods; let us show you.

NAME DR. WHEELER

Simon Decides on Appointment of Health Officer.

WILL RETAIN OLD BOARD

Interest now Centers in Next Mayor's Appointments for Chief of Police, City Engineer and Executive Board.

One of the first appointments to be announced by Joseph Simon on succeeding Mayor Lane Thursday morning, July 1, will be that of Dr. C. H. Wheeler for health officer. The position pays a salary of \$250 a month. Aside from this announcement, Mayor-elect Simon said yesterday that he had not finally decided who his appointees would be. He is known to be considering capable and available men for appointment as Chief of Police and City Engineer. Mr. Simon also is engaged in organizing the personnel of his Executive Board of ten members.
The appointment of Dr. Wheeler as Health Officer probably will be the only change in the city's health department as it is organized, with the inauguration of the new municipal administration. Mr. Simon has decided to retain the present Health Board, whose members will be reappointed. They are: Dr. A. J. Giesey, Dr. George F. Wilson and Dr. R. C. Yehvez. These three physicians, with the Mayor and the new Chief of Police, will constitute the Board. Dr. Wheeler served as Health Officer during a part of the Lane administration, but resigned because of friction with the city's executive. He will succeed Dr. Esther C. Pohl, who some time ago tendered her resignation, which is still pending before Mayor Lane and the members of the Board of Health.
In all appointments, including the selection of his Executive Board, Mr. Simon will adhere strictly to his announced policy and choose only competent and representative men who have not been actively identified in politics. It is this determination on the part of Mr. Simon which has proved a big blow to numerous active party workers who had fond expecta-

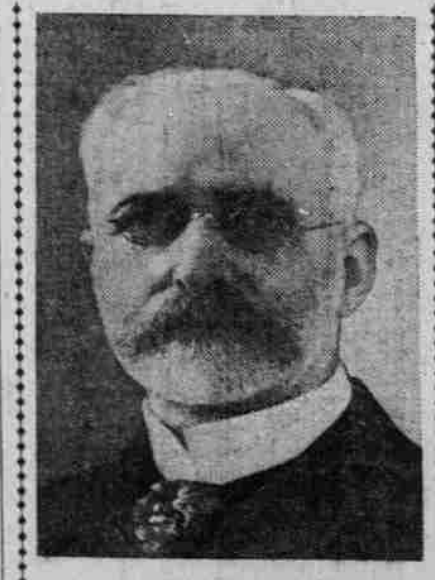
CAR INJURY FATAL

Carpenter Crossing Tracks Is Hurlled to Death.

BEWILDERED, HE STOPPED

John McCrum, 45 Years Old, Is Victim at Grand Avenue and East Washington—Witnesses Uphold Motorman.

John McCrum, 45 years of age, a carpenter living at 146 East Thirty-fourth street, was struck by a north-bound Mount Tabor car at Grand avenue and East Washington street shortly after 1 o'clock Sunday morning, and received injuries from which he died five hours later at the Good Samaritan Hospital. The body was removed to the morgue, where a post-mortem examination revealed a fracture of the skull and numerous minor injuries about the body. An inquest will be held at 4 o'clock today.
According to the story told by eyewitnesses, McCrum attempted to cross the tracks and became bewildered. Before the motorman could stop the car it had struck McCrum and hurled him several feet toward the curb. Dr. M. G. McCorkle was summoned and, not waiting for an ambulance, the injured man was placed aboard the car and hurried to the Good Samaritan Hospital. He died without regaining consciousness.
W. Johnson, of 10 East Fifty-first street, the motorman, stated he did not observe McCrum on the tracks until the car was 15 feet from him. He says he applied the air brakes immediately, but before he succeeded in bringing the car to a standstill McCrum was struck by the corner of the front vestibule. J. Daley, of 542 East Oak street, and G. J. Hill, of 397 East Burnside street, who witnessed the accident, state that McCrum had stepped from the curb and crossed the street, with the evident intention of boarding the northbound car. When he had reached a point directly in front of the oncoming car, he halted and before he



Dr. C. H. Wheeler, Who Will Be Portland's Next Health Officer.

CLASS OF 60 TO ENTER

Knights of Columbus Will Hold Installation Sunday.

ARM IS BROKEN BY FALL

Aged Woman Injured Leaving Mount Scott Transfer Car.

Mrs. Sarah E. Connors, a woman of 53 years, was the victim of a painful accident Saturday afternoon at 5:30 o'clock while alighting from a Mount Scott transfer car on Third street. Mrs. Connors fell, breaking her left arm at the wrist. She was taken into Lane & Davis' drugstore, at Third and Yamhill streets, where restoratives were applied until the arrival of Dr. E. A. Rockey and Dr. A. Tilsen, after which she was removed to the Good Samaritan Hospital.
Mrs. Connors resides in an apartment-house at East Davis and Grand avenue. She is without relatives in the city and there was no one to notify of the accident. Her occupation is that of a seamstress.
Plans for the entertainment of visitors to this city during the National convention of the Ancient Order of Hibernians, July 19 to 24, 1909, are already under way.

IT PLANS A YEAR AHEAD

Committee Arranges for Entertainment of Hibernian Convention.

Hicks Addresses Baptists.

ROSEBURG, Or., June 20.—(Special.)—Rev. E. H. Hicks, formerly pastor of the local Baptist Church, but of late engaged in ministerial work in Arizona, delivered an eloquent and impressive memorial address in the presence of several hundred Oddfellows at the Baptist Church this afternoon. Rev. Hicks is a favorite here and his remarks were listened to attentively.

ALASKA-YUKON-PACIFIC EXPOSITION

The June 19th issue of Collier's will be devoted to the Alaska-Yukon-Pacific Exposition. Photographs, articles and stories.

These Prices at All of Smith's Markets All Week Long:

- Fine Shoulder Roasts of Veal.....10c, 12 1/2c
- Fine Breasts of Veal.....8c, 10c
- Right fresh choice Veal Cutlets.....12 1/2c, 15c
- Veal Stew, per pound.....8c, 10c
- Knuckles of Veal.....6c
- Shoulder Roasts of Mutton, per pound.....10c, 12 1/2c
- Legs of Mutton, per pound.....12 1/2c, 15c
- Mutton Chops, per pound.....12 1/2c, 15c
- Best Round Steak, per pound.....10c
- Hamburg Steak, fresh every hour, per pound.....10c
- Best Sirloin Steak, per pound.....12 1/2c
- Best Tenderloin Steak, per pound.....12 1/2c
- Shoulder Steak, per pound.....8c
- Prime Rib Roast Beef, per pound.....10c, 12 1/2c
- Rump Roast Beef, per pound.....8c, 10c
- Shoulder Roast Beef, per pound.....7c, 8c
- Beef for Soup, per pound.....3c
- Beef for Boiling, per pound.....5c, 6c
- Smith's Absolutely Pure Pork Sausage, per pound.....12 1/2c
- Frankfurt Sausage, per pound.....12 1/2c

VISIT THE HANDSOMEST MARKET IN THE CITY—SMITH'S NEW MARKET IN THE SARGENT HOTEL BUILDING, EAST SIDE.
Bologna Sausage, Liver Sausage and Head Cheese, pound.....10c
Ham Sausage, per pound.....15c
Smith's Absolutely Pure, Not Adulterated, Lard, pound.....15c
Smith's Edible Beef Drippings, per pound.....10c
Breakfast Bacon, per pound.....20c
Hams, per pound.....18c
Chinook Salmon, per pound.....12 1/2c
Sturgeon, 2 pounds.....15c
Halibut, 3 pounds.....25c
Butter—Good Butter, 55c—Fancy Creamery Butter.....60c
Oregon Eggs, fresh from the ranch, per dozen.....25c

FRANK L. SMITH MEAT CO.
"FIGHTING THE BEEF TRUST"

WEST SIDE:
226 Alder Street.
Twenty-first and Johnson Streets.
188 Gibbs Street.
Eleventh and Montgomery Streets.
Third and Jefferson Streets.

EAST SIDE:
512 Williams Avenue.
363 East Morrison Street.
Thirty-third and Belmont Streets.
Grand Ave. and Hawthorne Ave.
352 East Burnside Street.
Jersey Street, St. John.
604 Alberta Street.
791 Mississippi Avenue.
SEASIDE—Bridge Street.

ASTORIA:
253 Taylor Street (Uniontown).
Twelfth and Bond Streets.