

# Phases of Industrial Growth in the Pacific Northwest

## 30,000 ACRES TO BE GIVEN WATER

## Big Irrigation and Power System Soon to Be Perfected in Lane County.

## WINTER SNOWS UTILIZED

## Storage Reservoirs on McKenzie River Will Furnish Water Supply in Summer Months for Valley Farmers.

## EUGENE, Or., April 25.—(Special.)—

Plans are perfected for bringing under irrigation the extensive valley lands between the Willamette and the Lower McKenzie rivers. The tract lies just across the Willamette from Eugene and adjacent to Springfield. It comprises some 30,000 acres of unusually deep and well-drained Willamette Valley soil.

The problem of securing water for this area was solved through the utilization of Clear and Fish lakes, at the source of the McKenzie, as storage reservoirs. The water accumulated in these lakes during the winter months, through dams placed at their outlets, will in the summer season be taken out of the McKenzie at Hendricks' bridge, some nine miles above Springfield, where the foothills merge into the level of the valley. There is a rapid fall of the river at this point and its rocky banks there make it possible without the expense of a dam to lead out a canal to an excellent power site and have the water from the fall race exactly in position for the irrigation of the magnificent expanse of the valley below. It is the combination of power plant and irrigation system right at the doors of a rapidly growing urban population that has won support for this pioneer project.

**Power in Ready Demand.**

Springfield, which is rapidly developing as a manufacturing center, is only five miles below the power site. There are three miles farther down the valley. These cities furnish a ready demand for the power generated. A single easily constructed canal system will thus have double utility from the start.

The most promising results obtained through the experiments conducted by the United States Department of Agriculture at different points in the Willamette Valley have been studied by the farmers here. The present project developed out of the Eugene Agricultural Experiment Station. The first master of the Grange is the president of the McKenzie Valley Irrigation & Power Company. The farmers stand sponsor for the project and are signing up their lands for the water most freely.

The region to be irrigated now contains some of the most famous cherry, walnut and apple orchards in the state. The larger portion is still held in large farms, but the general trend of cultivation under irrigation will take some time. The large holdings are being rapidly disposed of at from \$100 to \$150 an acre, to those who will cut them up into lots of from 10 to 20 acres.

**Land Products Multiplied.**

With water available the productivity of these lands will be multiplied four or five-fold. Irrigation experiments have demonstrated that the net income from each acre will equal a good rate of interest on \$1000. While the whole area now supports about 100 families, it will in the near future furnish homes for 1000. Its advantages for dairying under irrigation will be unexcelled.

In addition to these natural advantages for a great irrigation demonstration in the Willamette Valley, the location has exceptional market facilities. The main line of the Southern Pacific skirts it, the Woodburn-Springfield branch passes through it and branch lines radiate from Springfield to the sawmills and logging camps at Wendling and Natron. Trolley lines to Milaca and Summer resorts of Florence are virtually under way. Probably the most important advantage, however, is its proximity to the largest single forest area in the country.

**New Combination of Resources.**

The thing that appeals to the imagination of the community is that the enterprise represents a new combination of the great resources of the Willamette Valley—water and soil are brought together during the growing season and the water is a portion of the unnecessary surplus of winter held back so that it is made to do double service in generating power and in nourishing plant growth when the sun is furnishing the other requisite in heat. The enterprise, in combining storage, power development and irrigation under ideal conditions, will in the years to come be repeated in the Willamette Valley many times over if

## WILL HOLD BERRY FESTIVAL

## Roseburg Plans Two Days' Programme for May 14 and 15.

ROSEBURG, Or., April 25.—(Special.)—The date of the proposed strawberry festival to be held in Roseburg has been set by the Commercial Club for Friday and Saturday, May 14 and 15. The two days will be given over to displays of strawberries. A programme for both days has been prepared. On the evening of the first day the women will give a musical.

The occasion will also be taken advantage of by the importers and raisers of blooded livestock, and a large parade of animals is expected.

The similar lodge of Elks, accompanied by members of that lodge from different towns in Southern Oregon, will visit Roseburg on Saturday, the second day of the festival. The visitors will number about 250.

Douglas County strawberries are the first in the market each year and this fact will be widely advertised at the festival. It is proposed to secure photographs of the best displays and the parades and use them in booster booklets.

## DESERT IS RECLAIMED

## VAST AREAS PLACED UNDER WATER IN SOUTHERN IDAHO.

## Towns and Farms Cover District Which Four Years Ago Was Sagebrush Wilderness.

BY H. W. UNGER.

BUHL, Idaho, April 25.—(Special.)—In Southern Idaho 1,600,000 acres are being irrigated under the Carey act, which, together with the Government projects and others, make a total of over 3,000,000 acres. Where four years ago was sage brush are 6000 people. Buhl is the new town near the land which is being opened for entry and water. It has about 1000 people, a \$15,000 schoolhouse, splendid hotels, opera-houses, pressed-brick factory, creamery and many fine residences. Men from the large cities are found here supervising the construction of canals and reservoirs, of railroads and factories and clearing fields of potatoes and sugar beets.

Under the Carey act the settler can pay \$25 an acre cash, while the balance and the cost of irrigating the land is made in ten yearly payments. He lives on the land for 30 days and puts one-eighth of it in crop and receives easily bought and sold, and the poor man can get a start and pay for his land from the crops.

Forty thousand acres of the West End range will be opened for entry this summer. At Buhl, the headquarters, the warehouses and railroad yards are filled with tunneling, freighting and packing outfits. Here are herds of mules and horses awaiting the music order to advance upon the wilds of sagebrush prairie.

Fourteen years ago a lone, weathered, beaten prairie schooner, an old-fashioned turn brake, drawn by an ox-broke sagamore, a man and a woman set restlessly on the trail, and strained their eyes for the sight of a flag that gave promise of water. But no water, since they had left the railroad, some 40 miles back, had they seen any flowing water. A mercenary man beat down from a cloudless sky; was at last seen in the distance. The canyon gave promise of water. On reaching the banks they found the descent impossible, except by rope and pulley, and in this way they set down the oxen, the wagon and the children, who had been tucked away beneath the canvas top. Here they found a stream of water and made a cabin and a garden by its side.

Other pioneers came. Necessity became the mother of invention. They dreamt of taking the water from the deep, rock-walled canyon to the level lands above. Without money and often without necessities, they and each member of their families worked with the crudest implements. At the end of six years of continuous labor and hoping and despairing, the water flowed upon the new homestead.

Today George Hartwell's ranch is an oasis in the desert; a wonderland of flowers, meadows, shaded home and orchards. Tomorrow it will be the center of the West End Orchard District—being watered and opened for settlement this summer.

## Chehalis Sends Out Booklet.

CHEHALIS, Wash., April 25.—(Special.)—The Lewis County A.-Y.-P. exhibit committee has issued a 24-page booklet inviting Easterners to see the Lewis County exhibit at the Seattle exposition, and to visit Lewis County before returning East. Arrangements have been made to distribute 35,000 of these folders in the East. The folder contains about 7000 words of printed matter, and a map showing the northern portion of the United States.

**Good Spring Medicine.**  
Van Haren's Liver Balm, 25c bottle.

## CITY GROWING FAST

## One Thousand New Homes Are Building in Vancouver.

## MILLS WORKING OVERTIME

## Purchase of Right of Way by North Bank Road to Waterfront Leads to Belief Big Docks Will Be Built.

VANCOUVER, Wash., April 25.—(Special.)—Building operations in Vancouver were never more active than now. It is estimated that 1000 residences are in course of construction in Greater Vancouver, the buildings costing from \$500 to \$4000 each.

The planing mills and lumber yards are undergoing the greatest demand upon their output they have ever experienced, and every lumber dealer in Vancouver is filling rush orders.

**Water System Improved.**

The Vancouver Water Works Company has contracted for over \$30,000 worth of improvements to be installed this spring. The new reservoir, on the heights east of the city, made of reinforced concrete, is 100 feet by 200 feet and is 12 feet deep. This reservoir alone cost \$20,000. The new pumps, with a capacity of 600 gallons a minute, will be installed within 60 days at a cost of \$7000. Five thousand or 6000 feet of new mains are now being laid, with more than 12,000 feet of mains in prospect during the year.

The private water works being installed by J. M. Langford, a portion of Vancouver Heights and a large extent of territory along the carline neighborhood of \$20,000 will be completed. Fed by living springs, a large reservoir will supply an immense area of land, with a fall of 40 feet supplying 500,000 gallons a day.

**\$15,000 Business Block.**

At the corner of Eighth and Washington, Dr. Sedgwick is erecting a fine business block. It will be two stories and basement. The building will be of brick, the foundation and cellar of concrete, and it will contain five stores on the first floor and 21 offices fitted up in modern style.

**New \$25,000 Schoolhouse.**

A new brick schoolhouse will be erected near the recently annexed district, in Aradua Park, at about Twenty-sixth street. The new school will be commenced in time to be ready for use in the fall. It will cost \$25,000 and will be modern in every respect.

The Order of Eagles has commenced preparation for the erection of a \$30,000 business block on its quarter block at Thirteenth and Main, which will have stores on the ground floor, the upper floors being devoted to clubrooms and lodgings.

At Fourteenth and Main is the new Carnegie Library building, which is now about half completed. This building is of the massive type of pressed brick and concrete and is a most artistic structure.

**Building Activity General.**

To the stranger visiting Vancouver there is hardly a direction in which he may look that does not show many new houses in different stages of construction. Every section of the city offers its share of new homes.

Eight of the way has just been secured for the S. P. & S. Railway for a mile or more west of the city limits not far from the riverfront. This right of way is through the Mulligan & Phipps property, and it extends to a large tract of waterfront property bought last November through E. M. Rowley, and it has been generally supposed, as he handled all deals for the S. P. & S. Railway, that this waterfront property belongs to the S. P. & S. line. The right of way is for the practically certain that the North Bank Road is preparing to build to waterfront property, where for about a mile it has a deep water harbor, and between which and the mouth of the Willamette River is a deep water channel, so that to and from this harbor all ships and vessels that make the Portland harbor may come and go.

When the North Bank Road bought this magnificent waterfront property it was the general opinion in Vancouver that it was bought for the purpose of erecting thereon extensive wharves and docks, and warehouse and nothing in the way of investment in Vancouver in the past three years created as much optimism among the business men of the city as did the purchase of this piece of property by the railway, and now that the railway has just secured a right of way to this waterfront property there is no doubt but that the company will soon begin the building of docks and warehouses.

## WORK ON NEW ROAD BEGUN

## Klamath Falls to Lakeview Highway Being Rushed.

KLAMATH FALLS, Or., April 25.—(Special.)—Under direction of the County Court, work has been started on the Klamath Falls end of the new highway to Lakeview, over which it is intended shall be leased the traffic of Southeastern Oregon. Already many teams are arriving in Klamath Falls loaded with the wool clip from the great ranch regions of east Klamath and Lake counties and from across the California line.

Macadamizing will be in progress in a short time and in most cases it will not be necessary to haul the crushed stone far. Good material can be found at points near the road, from which it can be distributed at low cost. There are places where the stone can be supplied to crushers without leaving the highway and this condition will go to minimize the cost of the work.

The bridge and viaduct of the most substantial character will be put in and the work will all be of the best class. The planing mills are engaged in grading on the more distant sections of the road while the macadamizing force is working on the Klamath Falls end of the line.

## WEISER PLANS WELCOME

## WILL ENTERTAIN OREGON-IDAHO CONGRESS.

## Meeting Promises to Be One of the Largest Attended Conventions in Gem State.

WEISER, Idaho, April 25.—(Special.)—The Oregon-Idaho Development Congress, which meets here April 30, May 1 and 2, promises to be the largest event of the kind in Southern Idaho. Special rates have been granted on the railroads leading to this city, and from the information received by the officers of the Weiser Commercial Club the standard will be large.

Prominent men of Idaho and Oregon will be present and deliver addresses. Saturday evening a banquet will be served by the women of the Outlook Club of this city. Sunday the visitors will be given a free excursion over the Pacific & Idaho Northern Railroad to Evergreen, a distance of 76 miles.

Among those who have accepted invitations to address the congress are: Dr. J. R. Numbers, Mayor of Weiser; James H. Brady, Governor of Idaho; J. H. Richards, of Boise; Addison Bennett, of Irigoin, Or.; "Central Oregon" and "Cos Bay" Colonel E. Hofer, Salem, Or.; "Development in Oregon and Idaho"; A. L. Frehafer, State Senator from Washington County, "Washington County, Its Resources and Possibilities"; Rully Atkinson, secretary of the League of Southern Idaho Commercial Clubs, Boise, Idaho; "The Work of the Pacific Northwest"; "The Work of the League of Southern Idaho Commercial Clubs, Twin Falls, Idaho; "What We Are Trying to Do"; G. A. Hurley, Vale, Or.; "The Wealth of Central Oregon"; Miss Estelle Riddle, editor of the Ontario Optimist; "Women Boosters"; Joseph P. Callen, Commissioner of Immigration for Idaho; "The Upholding of Idaho"; George W. Shellenbarger, Boise, Idaho; "State Aided Railroads"; Colonel C. E. Little, Portland, Or.; "The Railroad Situation in Southern Idaho and Oregon"; a member of the Portland Chamber of Commerce; "The Railroad Situation"; "The Standpoint of Business Interests."

Automobiles will be at the disposal of visitors, who will be shown about the city. The handsome new quarters of the Weiser Commercial Club will be used as headquarters during the stay of the visitors in the city.

## FRUIT PROSPECTS BRIGHT

## Newberg Cannery Prepares for Summer Operations.

NEWBERG, Or., April 25.—(Special.)—Cherry, prune, pear and apple trees are loaded with bloom, and Nehalem Valley has never had a better prospect at this season of the year for a bumper crop of fruit than is in sight at the present time. Barring killing frosts and cold rains, which are always to be feared in the Spring, the fruit crop will be big one. The Weber Canning Company is arranging to start the big cannery here before the opening of the berry and fruit season, and will be prepared to take care of all that will be offered.

**Klamath Falls to Clean Up.**

KLAMATH FALLS, Or., April 25.—(Special.)—In preparation for the celebration of the completion of the railroad, Klamath Falls will have a "clean up day." It is the desire to make the city as near a spotless town as possible and put it in first-class sanitary condition. With the extensive street improvements being planned for the year, which will probably include the paving of Main street its entire length, the town will be one of the most attractive spots on the Coast for summer visitors.

English pumps at Rosenthal's.

# VARICOSE VEINS

In the larger institutions of the East, especially the outdoor clinic of St. John's Hospital, St. Louis, I have for years devoted much time and study to the best, safest and most successful method of curing VARICOSE VEINS, and have been rewarded with complete mastery over this most distressing ailment. My plan does not involve a single objectionable feature. There is no going to bed; no taking of chloroform or ether; no pain, and after one week, and is not required to stay in his room even a day. The organs are immediately relieved of tax, a normal circulation of blood goes to the vital organs, and is intended before the varicose veins appropriate the supply, and the patient is at once restored to a condition of health, snap and vitality, permanent and complete. Is it not about time you were looking at the logical, practical and plain fact side of this matter? If you have not yet received a cure of your varicose veins, come to me and let us talk it over. This will cost you nothing and will be helpful to you.



# WEAK MEN

Every year more brains and intelligence are required to meet the exigencies of the times. It makes no difference whether it is farming or merchandising you are living in an age when it is necessary to bring out the best there is in you or get left at the post. The man who is spent of vigor and

Not a Dollar Need Be Paid Until Cured

# Sapped of Vitality

shackled with dissipation and encumbered with the evil consequences of vice, you are living in an age when it is necessary to bring out the best there is in you or get left at the post. The man who is spent of vigor and

shackled with dissipation and encumbered with the evil consequences of vice, you are living in an age when it is necessary to bring out the best there is in you or get left at the post. The man who is spent of vigor and

# ST. LOUIS MEDICAL & DISPENSARY

Cor. 2d and Yamhill Portland, Or.

Our arrangements with patients are unapproachable for prices and fairness of terms by any specialist on the Coast. No man is too poor to take treatment and we charge nothing to prove our methods will cure you. Our experience and facilities are unequalled in Portland, and we have the largest referred practice in the city. We mean by "referred practice" patients referred to us by others who previously treated with us and voluntarily recommend their friends to us for similar treatment.

Our treatments are mild—out results are quick. We successfully treat Acute, Chronic and Kidney Diseases, Blood Poison, Varicose Veins, Catarrh, Skin Diseases, Stomach and Bowel Troubles, Piles, Glands, Rheumatism, Bladder Ailments, Nervous Debility, and many other diseases of men not mentioned here. No business address or street number on our envelopes or packages.

Consultation and advice free. If you cannot call at office, write for self-addressed blank—many cases cured at home. Medicines \$1.50 to \$5.00 per course.

HOURS—9 A. M. TO 9 P. M. SUNDAYS, 10 A. M. TO 12.

## MANY FARMS SOLD

## Easterners Rapidly Filling Up Clackamas County.

## OTHERS SEND INQUIRIES

## Oregon City Real Estate Dealers Report Active Movement in Farm Lands—New Settlers Delighted With Climate of Oregon.

OREGON CITY, Or., April 25.—(Special.)—During the past week considerable real estate of Clackamas County has changed hands, and it is assured that during the coming Summer many people will come here from the East looking for a new location. Several families have already reached Oregon City, and have purchased property. Farm land is more in demand than in any city.

All of the real estate men of this city say that business has been good during the past month. Many inquiries are coming in from people who are desirous of obtaining information concerning the climate, crops and soil. If the real estate men had on hand a supply of literature pertaining to Oregon City and Clackamas County, so as to be able to send it out upon request, it would be a great advantage to those inquiring.

Schooley & Cadell, real estate men, report the following sales during the past few days: The Jacob Harry place, consisting of 25 acres and including the stock and farm implements, consideration being \$2200; the Holcomb farm, of 100 acres on the Holcomb road, consideration \$1800; the Iule property in Portland, for \$2800. Other important land deals will probably be closed within a few days.

## DOCTOR ADVISED OPERATION

## Cured by Lydia E. Pinkham's Vegetable Compound

Faw Paw, Mich.—"I suffered terribly from female ills, including inflammation and congestion, for several years. My doctor said there was no hope for me but an operation. I began taking Lydia E. Pinkham's Vegetable Compound, and I can now say I am a well woman."

EMMA DRAFER.

Another Operation Avoided.

Chicago, Ill.—"I want women to know what that wonderful medicine, Lydia E. Pinkham's Vegetable Compound, has done for me. I was the best doctor in Chicago said I would die if I did not have an operation, and I never thought of seeing a well day again. I had a small tumor and female troubles so that I suffered day and night. A friend recommended Lydia E. Pinkham's Vegetable Compound, and it made me a well woman."—Mrs. ALICE C. FREELING, 11 Langdon St., Chicago, Ill.

Lydia E. Pinkham's Vegetable Compound, made from roots and herbs, has proved to be the most successful remedy for curing the worst forms of female ills, including inflammation, inflammation, fibroid tumors, irregularities, periodic pains, backache, bearing-down feeling, flatulency, indigestion, and nervous prostration. It costs but a trifle to try it, and the result has been worth millions to many suffering women.

## Every mother feels a great dread of the pain and danger attendant upon the most critical period of her life. Becoming a mother should be a source of joy to all, but the suffering and danger incident to the ordeal makes its anticipation one of misery. Mother's Friend is the only remedy which relieves women of the greater pain and danger of maternity; this hour which is dreaded as the woman's severest trial is not only made painless, but all the danger is avoided by its use. Those who use this remedy are no longer despondent or gloomy; nervousness, nausea and other distressing conditions are overcome, the system is made ready for the coming event, and the serious accidents so common to the critical hour are obviated by the use of Mother's Friend.

"It is worth its weight in gold," says many who have used it. \$1.00 per bottle at all drug stores. Contains valuable information of interest to women. Will be sent free on request. BRADFIELD REGULATOR CO., Atlanta, Ga.

# Lasting Cures For Weak Men

Never was the old saying, "He who hesitates is lost" more aptly illustrated than in the case of the man who suffers from WEAKNESS, VARICOSE VEINS, CONTRACTED DISORDER OR CONTAGIOUS BLOOD POISON, and who neglects to have his ailment treated. Do not scatter your faculties, as do the ordinary physician, but concentrate them on the one weakness peculiar to the man. Recently I have treated scores of such cases for some of the best men of Portland and vicinity, and not a failure nor an unpleasant result has been reported. What I have done for others I can do for you.

# Weakness

My cures of this disorder are permanent and lasting. No tonics that stimulate temporarily, but thoroughly scientific treatment for the removal of conditions responsible for the functional derangement. "Weakness" is merely a symptom of inflammation, or congestion of the prostate gland, and under my own original local treatment the gland is promptly reduced to its normal state and complete functional activity is the lasting result.

VARICOSE VEINS, CONTRACTED DISORDERS, PILES AND SPECIFIC BLOOD POISON I TREAT AND NEVER FAIL TO EFFECT A CURE.

CONSULTATION FREE—MY HONEST AND CANDID ADVICE COSTS YOU NOTHING. I cheerfully give you the very best opinion, guided by years of successful practice. Men out of town in trouble, write if you cannot call, as many cases yield readily to proper home treatment and cure.

OFFICE HOURS—9 A. M. TO 9 P. M. SUNDAYS, 10 TO 1 ONLY.



# The DR. TAYLOR Co.

234 1/2 MORRISON STREET, CORNER SECOND STREET, PORTLAND, OR.

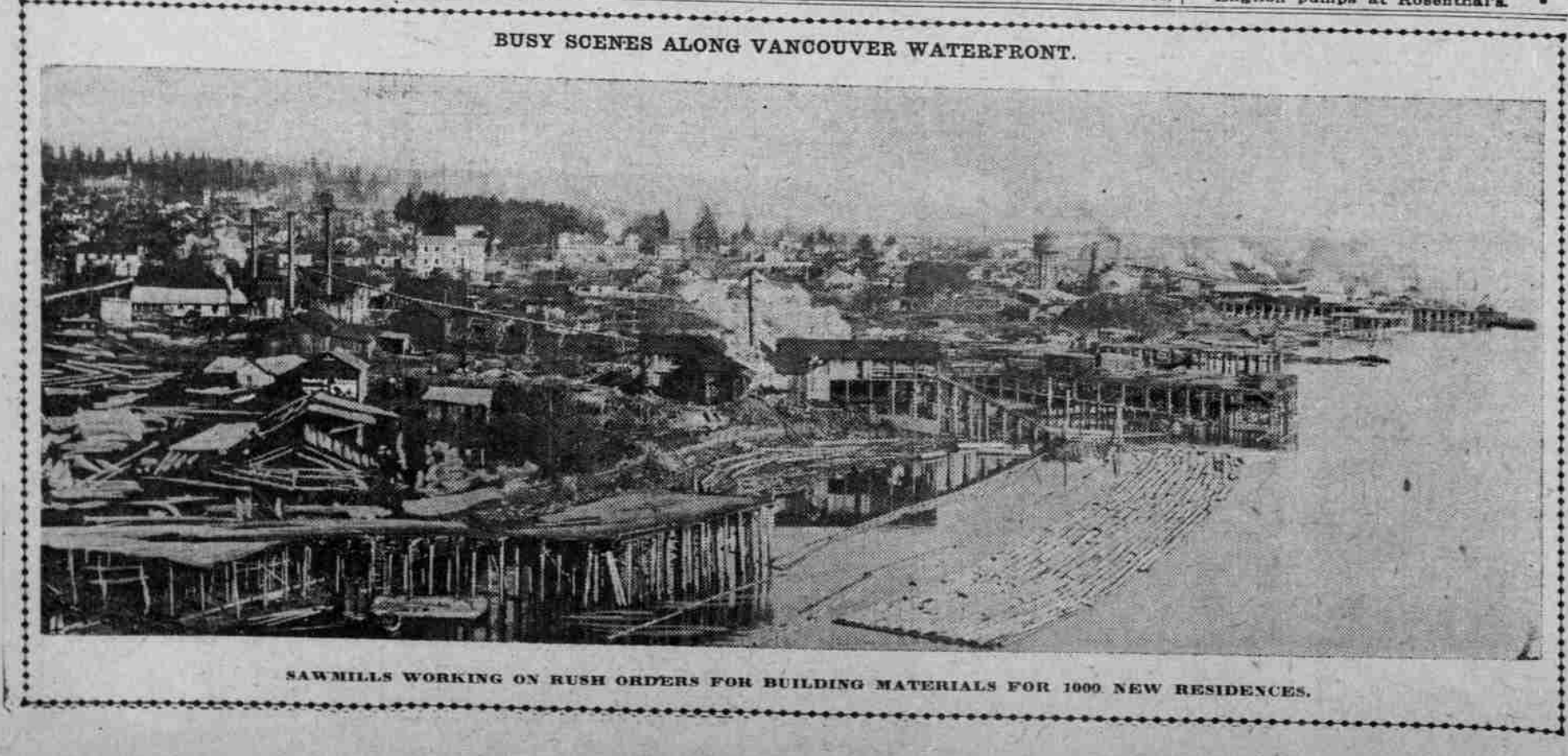
# HAND SAPOLIO

FOR TOILET AND BATH

It makes the toilet something to be enjoyed. It removes all stains and roughness, prevents prickly heat and chafing, and leaves the skin white, soft, healthy. In the bath it brings a glow and exhilaration which no common soap can equal, imparting the vigor and life sensation of a mild Turkish bath. All Grocers and Druggists.



DR. WALKER  
181 First St. Cor. Yamhill, Portland, Or.



SAWMILLS WORKING ON RUSH ORDERS FOR BUILDING MATERIALS FOR 1000 NEW RESIDENCES.