

IDEAL WINTER TRIPS

PERFECTLY DELIGHTFUL ALL DOWN THE LINE

The Oregon Railroad & Navigation Co.

Is Famous the World Over as the
SCENIC COLUMBIA RIVER ROUTE

It is the short and direct line between the Pacific Northwest and all points East, and maintains a through service between Portland and Chicago and other Middle West centers of the highest transportation standard.

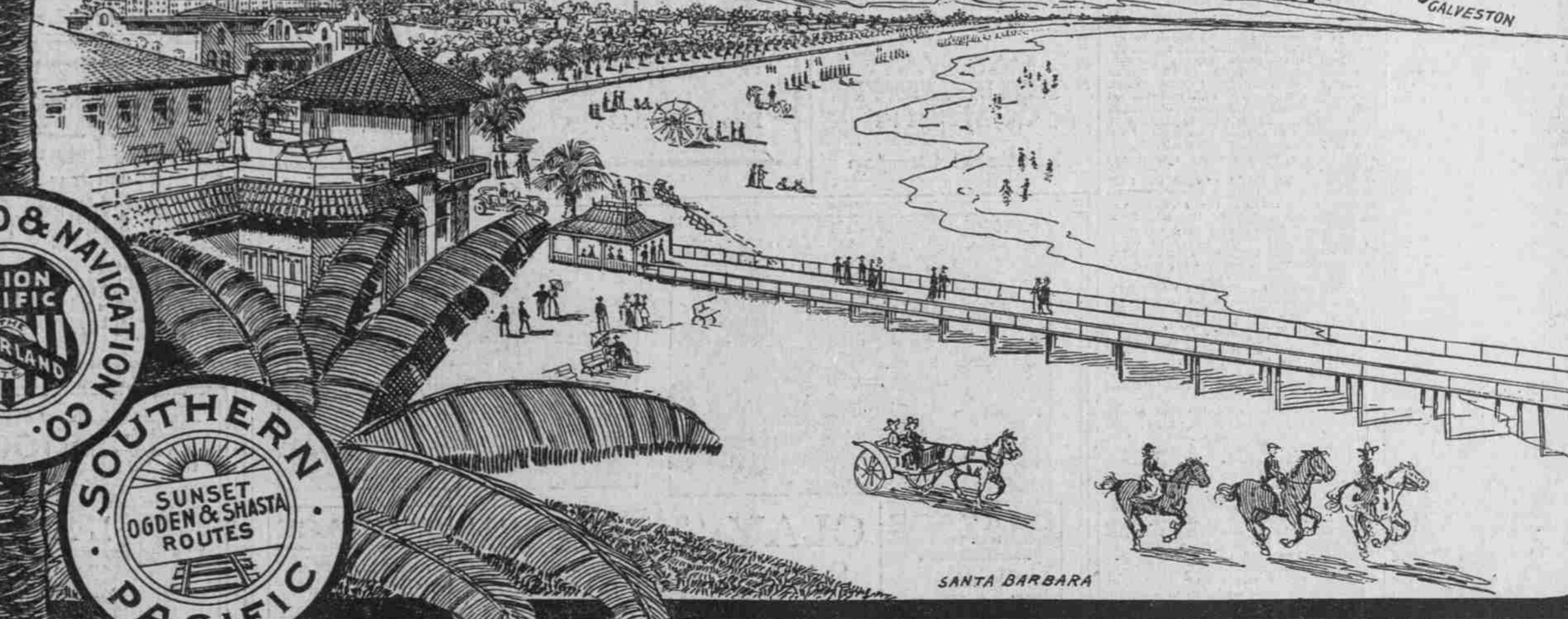
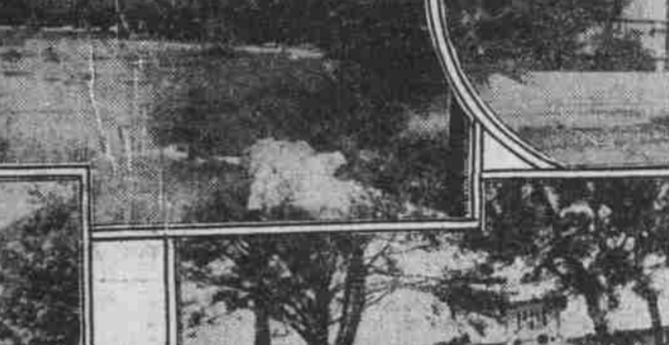
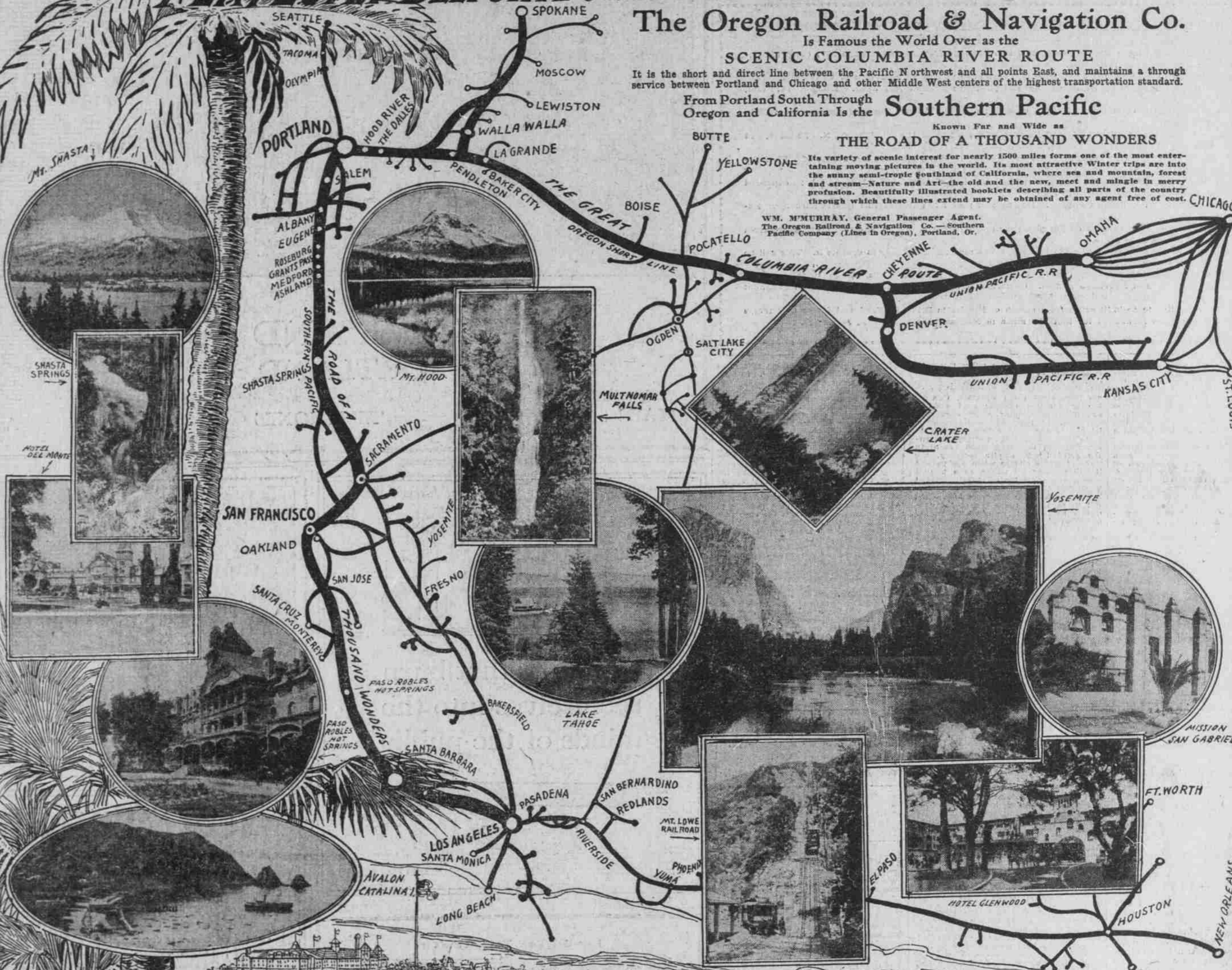
From Portland South Through **Southern Pacific**

Known Far and Wide as

THE ROAD OF A THOUSAND WONDERS

Its variety of scenic interest for nearly 1500 miles forms one of the most entertaining moving pictures in the world. Its most attractive winter trips are into the sunny semi-tropic foothills of California, where sea and mountain, forest and stream—Nature and Art—the old and the new, meet and mingle in merry profusion. Beautifully illustrated booklets describing all parts of the country through which these lines extend may be obtained of any agent free of cost.

W.M. McMURRAY, General Passenger Agent,
The Oregon Railroad & Navigation Co.—Southern
Pacific Company (Lines in Oregon), Portland, Or.



SANTA BARBARA