

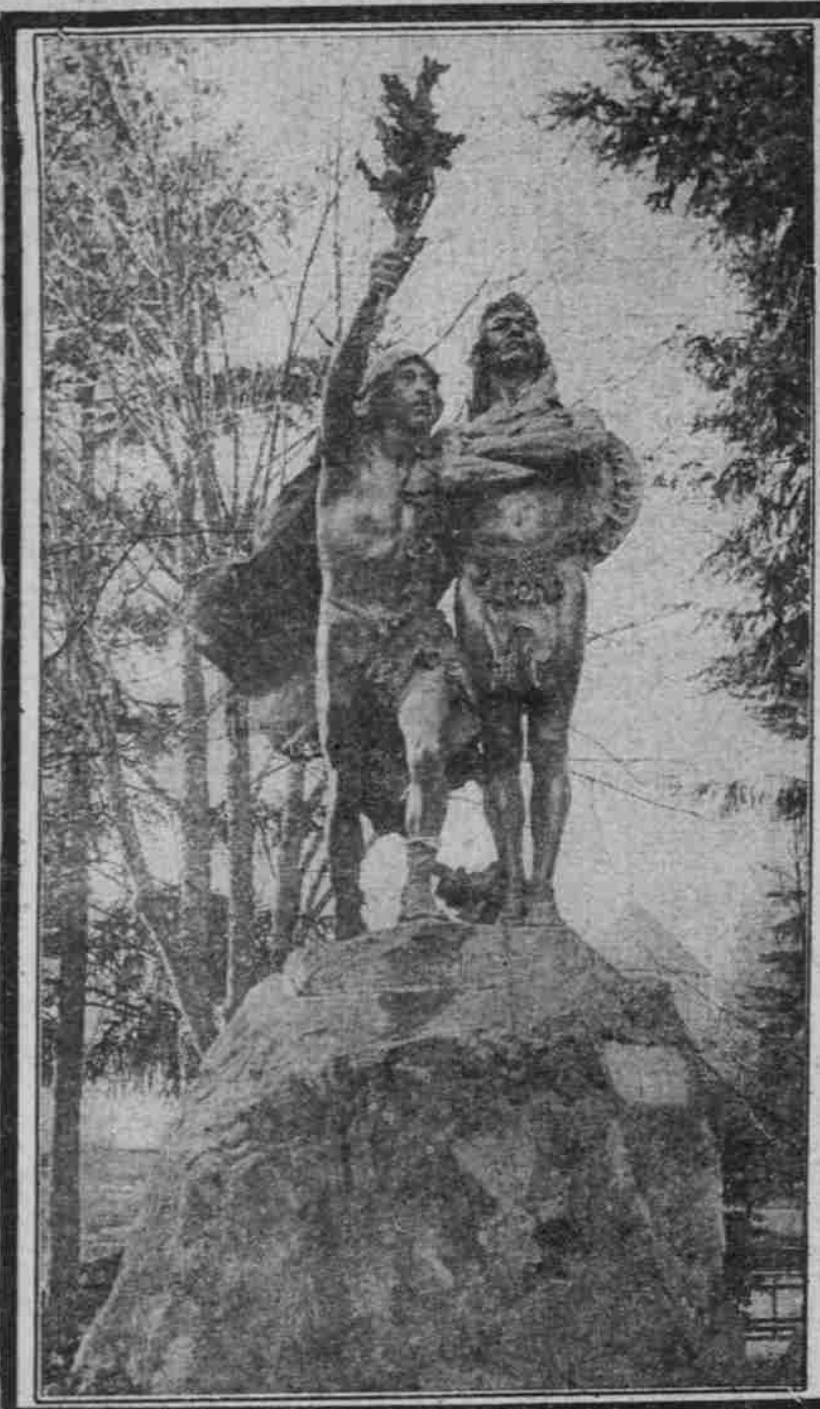


VOL. XLVIII.

PORTLAND, OREGON, FRIDAY, JANUARY 1, 1909.

NO. 15,006.

MONUMENTS IN PORTLAND ARE NOTABLE EXAMPLES OF SCULPTOR'S ART



"THE COMING OF THE
"WHITE MAN," CITY PARK



OLD SOLDIERS' MONUMENT
AT
G. A. R. CEMETERY



"SACAJAWEA"
CITY PARK



ELK FOUNTAIN, ERECTED
BETWEEN PLAZA BLOCKS BY
DAVID P. THOMPSON



SKIDMORE FOUNTAIN,
FIRST AND ANKENY, ONE OF PORTLAND'S
ART TREASURES



STREET FOUNTAIN AT
6TH AND ANKENY



MONUMENT TO SECOND OREGON VOLUNTEERS,
IN PLAZA BLOCKS



FOUNTAIN ON FIFTH ST. NEAR POST OFFICE