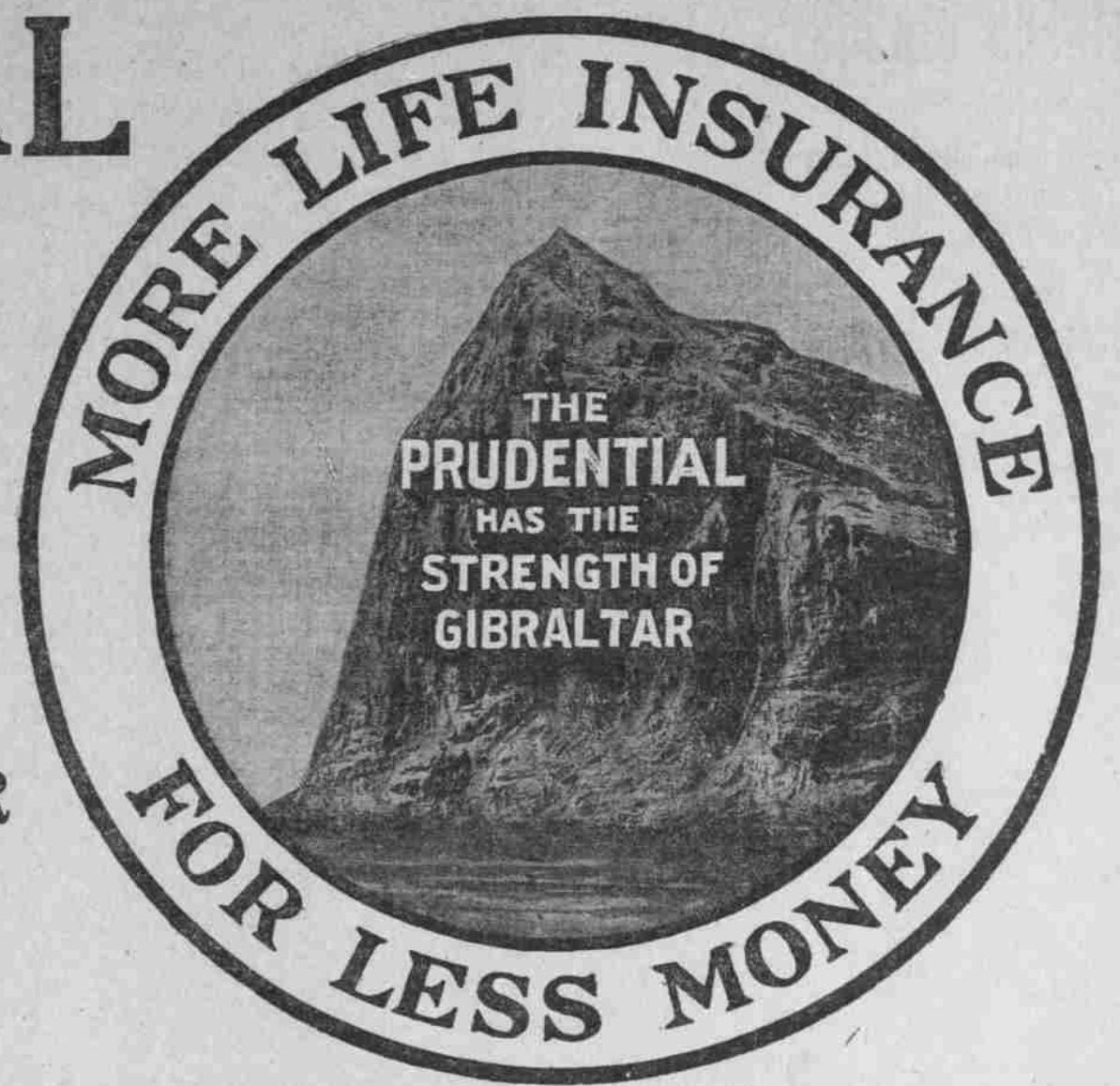


# THE PRUDENTIAL

WROTE THE

First Industrial Life Insurance Policy in the United States Nov. 15, 1875

THE NUMBER OF INDUSTRIAL POLICIES NOW IN FORCE IN THE PRUDENTIAL IS OVER **7 MILLION**



**Paid Policyholders over 150 Million Dollars**

## THE PRUDENTIAL INSURANCE CO. OF AMERICA

Incorporated as a Stock Company by the State of New Jersey

JOHN F. DRYDEN, President.

HOME OFFICE, NEWARK, N. J.

Agents Wanted. Good Income. Promotion.

BRANCH OFFICES IN PORTLAND:

JOHN PAUER, Superintendent, Rothchild Bldg.

E. D. SHELDON, Acting Manager (Ordinary Dept.) Corbett Bldg.

Ordinary and Industrial policies. Ages 1 to 70. Both Sexes. Amounts, \$15 to \$100,000.

Prudential Agents are now canvassing in this vicinity. They have a most vital story to tell of how Life Insurance has saved the home, protected the widow, and educated the children. Let them tell it to you.

### FOILS PRISON PLOT

Sheriff Minto Captures Ex-Convict and Dynamite.

### PRISONER'S TALE THRILLS

Declares He Intended to Supply Nitro-Glycerine to Trusty Inside the Penitentiary—Proposed to Blow Down Stone Walls.

SALEM, Or., Dec. 10.—(Special.)—The vigilance and prompt action of Sheriff Minto and Deputy Each today prevented the blowing up of the Oregon Penitentiary with nitro-glycerine or dynamite. C. Yachito, a Japanese ex-convict who was released from the prison yesterday, was arrested today with the explosive in his possession and he admitted that it was his intention to deliver the death-dealing material to a trusty prisoner who works on the outside and who would be able to take the stuff inside to use in a general outbreak.

Yachito finished a two-year term for larceny committed in Multnomah County. When he was released he came directly down town and in doing so passed the courthouse. As the man passed down State street Sheriff Minto was looking out the window of his office and noticed the man. He recognized the Japanese as an ex-convict, by reason of his appearance and new suit of clothes. He has seen so many ex-convicts immediately after their release that he can generally identify them by their appearance. In this instance he paid no particular attention at the time, but he and Deputy Each kept an eye open for the Japanese during the afternoon.

going directly from the penitentiary to the gun store indicates very strongly that he had a desperate purpose in view. The Japanese will be held for the present on the charge of carrying concealed weapons, though the explosives were the only weapons he had. His past record will be looked up.

### REWARD OF \$6000 OFFERED

Great Northern and Government Anxious to Capture Outlaws.

### M'ELDOWNEY GIVEN JOB

Assistant Postmaster to Succeed Atwell at Forest Grove.

FOREST GROVE, Or., Dec. 10.—(Special.)—Word was received yesterday by W. W. McDowney, of this city, that he was appointed postmaster of Forest Grove, to succeed H. C. Atwell. McDowney has been assistant postmaster for the past seven years and his appointment was expected.

### Put Stamp Mill in Halley Mine.

OREGON CITY, Or., Dec. 10.—(Special.)—The Willow Creek mines, located near Halley, Idaho, and owned by local capitalists, will be equipped with a stamp mill, which was purchased in Portland yesterday by Superintendent Rambo and will be shipped into the mines. In the Stuart lode a vein of platin has been discovered and free gold-bearing quartz has been reached in one of the claims.

Mayor Pollman Takes Office.

BAKER CITY, Or., Dec. 10.—(Special.)—William Pollman, newly elected Mayor, took up his official duties this evening, Charles A. Johns retiring. In his message to the Common Council, Mayor Pollman advocates improvement in the city water system, pavement of the principal streets of the city, a competent paid fire department, and revision of the city's financial policy.

at Albany to visit his brother, State Senator Frank Miller, before going to California, and he expects to start for his post of duty about March 1. Mr. Miller has not been well and he hopes to regain his health in the southern climate before leaving for the East.

### GUILTY IN SECOND DEGREE

James J. Thomas Convicted of Killing His Wife.

### Mitchell to Fill Vacancy.

OLYMPIA, Wash., Dec. 10.—(Special.)—Governor Mead today appointed John Mitchell, of Olympia, Superior Judge for Mason and Thurston Counties to fill out the few weeks of the term of the late Judge Linn. Judge John R. Mitchell is Judge-elect for the District.

### CHRISTMAS

What would afford you more pleasure in your home Christmas Day than music and story and song. Music gives to the home life an atmosphere which nothing else can supply. Your children will be better, brighter, happier if they sing and play. Mother and father will likewise be happier. Music indeed has charms—power to drive "evil" care away. We suggest a piano, a player piano, or a Victor Talking Machine for a Christmas present for the whole family. A new piano will find its way to your home if you will bring us but \$10 cash; a player piano if you bring us \$25 cash; a Victor talking machine if you pay only \$5 cash and \$1 per week. Why should you be without music this Christmas Day and all the days of 1909?

This is a personal invitation for you to call to see and hear our pianos and Victor talking machines.

STEINWAY AND OTHER PIANOS.  
**Sherman-Clay & Co.**  
OPPOSITE POSTOFFICE, SIXTH AND MORRISON.

ernoon in the case of Math Jancaj, who was last month convicted of murder in the first degree and was sentenced to be hanged January 8 next. Jancaj is a Slavonian, and last July he killed 16-year-old Mary Smolek, in this city, because the girl frowned upon his suit. His attorneys are Dimick & Dimick and J. U. Campbell, the latter having been appointed by the court. Attorney George C. Brownell assisted Deputy District Attorney Tongus as special prosecutor.

### Jancaj Files Appeal.

OREGON CITY, Or., Dec. 10.—(Special.)—Notice of appeal was filed late this afternoon.

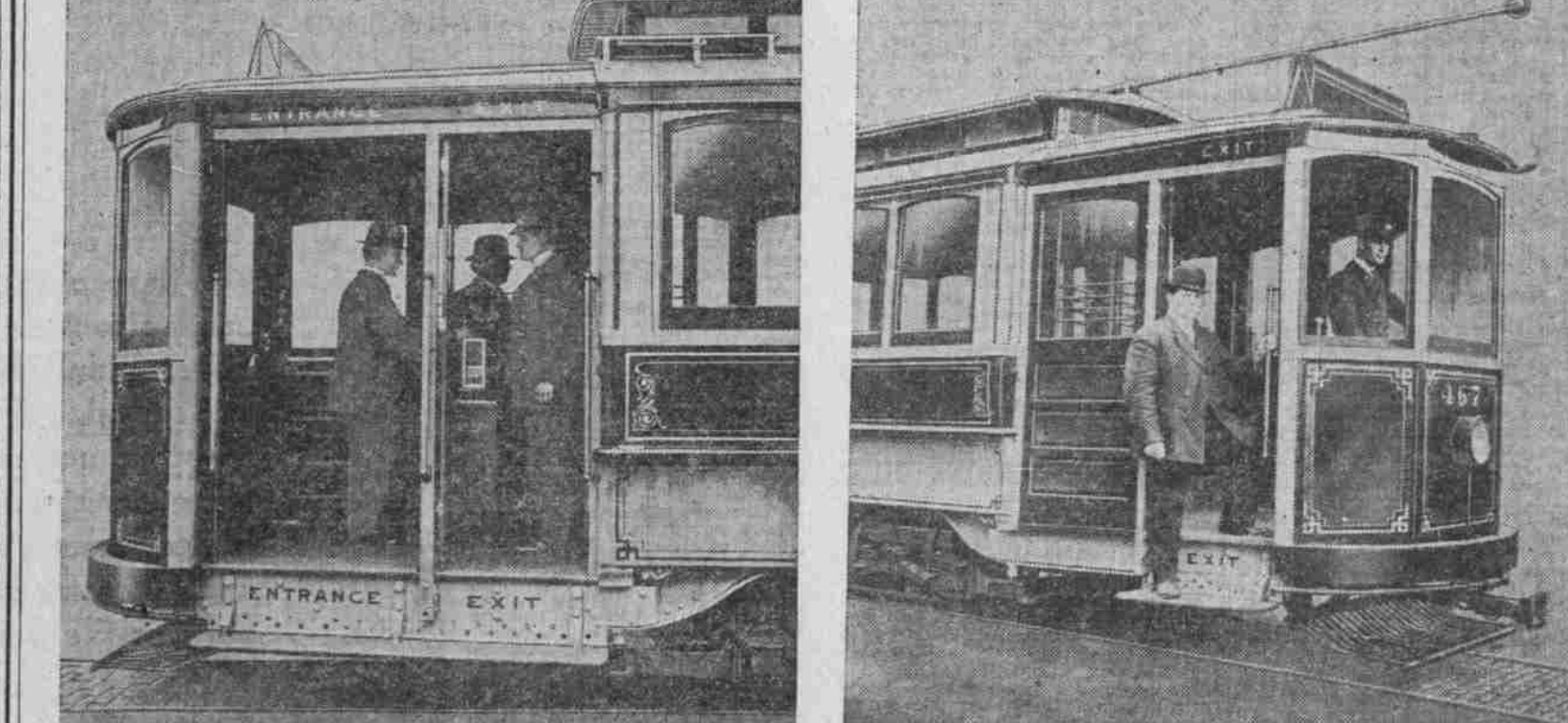
### Property Values in Old Yamhill.

M'MINNVILLE, Or., Dec. 10.—(Special.)—Nearly one-fourth of the taxable property of this county is contained within the corporate limits of the ten cities and towns in the county. They contain property of the assessed value of \$2,048,057, which is listed as follows: McMinnville, \$222,076; Newberg, \$298,194; Carlton, \$288,866; Sheridan, \$280,415; Dayton, \$138,896; Yamhill, \$128,076; Amity, \$92,442; Lafayette, \$72,814; Willamina, \$66,830; Dundee, \$41,476. The total valuation for the entire county for this year is \$12,225,570.

Consul Miller Starts South.

ENGENE, Or., Dec. 10.—(Special.)—H. B. Miller, United States Consul-General, with headquarters at Yokohama, Japan, left Eugene this afternoon to join his family at San Mateo, Cal. He will stop

## PAY-AS-YOU-ENTER CAR



SHOWING CORRECT POSITION OF CONDUCTOR ON CAR, DIVIDED PLATFORM AND PASSENGER DEPOSITING FARE IN FARE BOX. SHOWING FRONT "EXIT" AND PASSENGER ALIGHTING FROM CAR.

Commencing on Thursday Morning, Dec. 10, pay-as-you-enter cars will be placed on the Depot-Morrison and Hawthorne Ave. lines and at a later date will be placed on the 23d-street line

This style of cars is operated very successfully in Eastern cities and is similar in construction to the cars now running on 23d street and Mt. Scott lines, except that the platforms are much larger; the rear platform being divided for exit and entrance, while the front platform is used for exit only.

By the installation of this type of car transportation will be more regular, comfortable and safer than at present; more regular because of the systematic arrangement of entrance and exit passages, eliminating confusion and lessening the time required for stops; more comfortable because of the size of the car and the fact that the conductor is not compelled, in collecting fares, to pass frequently through the car to the annoyance of the passengers; safer because the conductor will remain on the rear platform and thus prevent accidents due to starting car while passengers are in the act of boarding or alighting.

In this effort to improve the service the public is earnestly requested to co-operate—by entering car only at rear step marked "Entrance."

By depositing the exact cash fare or ticket in the fare box, or by giving transfers directly to the conductor.

By asking the conductor for transfers at the time fare is paid.

By moving promptly into the car as near forward end as possible, thereby preventing congestion at the rear doors.

By alighting at either end by exits shown on diagram.

Electric signal push buttons are located on the posts between windows; press button as a signal for car to stop.

**THE PAY-AS-YOU-ENTER CAR**

(The arrows indicate the direction of movement of passengers when entering or leaving the car.)

**PORTLAND RAILWAY, LIGHT & POWER COMPANY**