

# FINCH IS ON WAY TO SPEEDY TRIAL

## Murderer of Ralph B. Fisher Is Given Hearing and Held to Grand Jury.

### GIRL POINTS OUT ASSASSIN

#### Dramatic Scene in Justice Court When Miss Verna Burkhardt Singles Out Man Who Killed Her Employer.

James A. Finch, discredited lawyer, was held to the Grand Jury yesterday afternoon for the deliberate murder of Ralph B. Fisher, proprietor of the Multnomah Hotel, at the conclusion of the preliminary examination he was remanded to the custody of the Sheriff without bail. His indictment is to occur next week. His trial will be arranged for as early a date as possible and it is the purpose of the District Attorney's office to have him at the gallows with only such delay as is unavoidable.

There was a dramatic scene during the examination when Miss Verna Burkhardt, the stenographer who witnessed the murder, was called upon to point out the murderer. She was asked to do this while on the witness stand describing the shooting and the request was put by C. F. Lord, attorney for Finch.

**Starts at Sight of Finch.**

Miss Burkhardt looked about on the crowd that jammed Justice of the Peace Bell's courtroom. For several minutes she continued looking from face to face and she seemed on the verge of reporting that she did not see the murderer when her eyes, as by chance, rested on Finch who was sitting at a table not more than five feet in front of her.

Miss Burkhardt started as if she had been struck and for a moment seemed on the verge of fainting when, at length she controlled herself, she pointed at Finch.

"That's he sitting right there," she said with a shudder.

Finch grew very uneasy at this moment and worked about most uncomfortably in his seat. He seemed vastly relieved when the next stage of the proceedings was taken up for Miss Burkhardt would occasionally look at him and shudder while on the witness stand.

There was another dramatic moment when Finch's wife, a bride of several weeks, entered the courtroom just before court was called to order. Walking straight to where he was seated she threw her arms about his neck and kissed him several times. She then drew up a chair and sat with him during the examination, holding and stroking his hands. She was closely watched by Deputy Sheriff Bulger who was intent on seeing that she did not slip anything into his possession.

**Plan of Defense Shown.**

From the attitude of Finch and his lawyers, it was made clear at the examination that the defense will be a combination of emotional insanity and self-defense. Attorney questioned Miss Burkhardt, the sole eyewitness, very closely about the moment of the shooting and attempted to bring out that Fisher had a revolver ready. Miss Burkhardt said Fisher had told her of having purchased a revolver some weeks ago, saying it might be useful one day in proving himself able. But she never saw the weapon. There is no likelihood, however, of the defense profiting by the claim of self-defense for Fisher's revolver was found set far back in a deep drawer of his desk.

The examination was called at 2 P. M. and continued for two hours. It was held at the request of Finch, who was represented in court by Attorney Lord and Piggott. The state was represented by District Attorney Cameron and his chief deputy, J. J. Fitzgerald. No defense was attempted and the state brought out only such portions of its case as seemed absolutely necessary for the purpose of having Finch bound over.

**Deputy Coroner on Stand.**

Deputy Coroner Dunning was the first witness and he described minutely the position in which Fisher's body lay after the murder. After the gunshot wound which caused his death had been described, Miss Burkhardt was called to the witness stand. She told in detail of the shooting. In response to questions asked by Mr. Fisher she said that Finch entered the reception hall or outer office of Mr. Fisher's suite about 1:30 o'clock Saturday and asked for Mr. Fisher. "I stopped to the door," she said, "and told Mr. Fisher that a gentleman wished to see him. Mr. Fisher was busy at his desk and merely looked up. Then this man broke past and walked into the room. He said 'hello Ralph' and then drew a revolver from his coat pocket and started shooting. I ran out of the office, not knowing what was going to happen and screamed for help."

Miss Burkhardt's dramatic identification of the murderer followed a moment later when Attorney Lord began plying the young woman with questions regarding Fisher's revolver. The defense neglected to ask her if she could see Mr. Fisher at the moment of the shooting. It is not believed that the defense will go to the seemingly ridiculous extreme of attempting to show that Finch was actually in danger. Instead it is likely that in describing his mental condition at the time an effort will be made to establish that he thought he was in actual danger. And by affirming that Fisher had a revolver the purpose of such a plea might be given some little color.

**Believe Finch Will Hang.**

But the belief is prevalent among lawyers that Finch's path leads direct to the gallows. His only possible loophole, of course, must lie in proving mental unsoundness at the moment of the murder and in this it is believed he must fail. There is no insanity in his past record and he was able to talk clearly and consistently a half hour before the shooting. An hour after it occurred he could talk clearly on every subject excepting the murder. And those who talked with him were unanimous in the belief that he was simulating bewilderment on that subject.

It is not regarded as probable that an average jury, carefully selected, would believe that a man would have such a lapse or, at least, that he was benefited to any distinction from other murderers on account of claiming such a lapse.

Finch seems genuinely worried now. When talking he succeeds in effect-

ing self-control, but he has not that complacency which marked his manner on the day of his arrest. He has been assigned by Sheriff Stevens to a cell in murderers' row and here he mixes freely with the others of his kind.

## VITRIFIED BRICK.

### What They Are Composed of and How Made.

In the minds of some people street paving brick have no special distinction from common brick other than that they are hard burned. This is, however, not the case. To make a vitrified brick it requires a high grade of mineralized clay, or what is commonly known as shale, a pure substance absolutely free from all earthy or deleterious matters, the principal elements being silica, alumina and iron. Such clay exists in solid formation and is mined by heavy explosives and is in no sense a surface product. The clay, or shale, is reduced to a dust by very heavy grinding and pulverizing machinery and is then ground and tempered in water to suitable consistency, when it is pressed into column form under machine pressure and is cut into brick form, giving each brick uniform size and shape. After the brick are pressed they are thoroughly dried in specially constructed tunnel driers, passing through this process in about 24 hours. The drying brick are put into kilns, where the burning takes place. These kilns are ingeniously devised and are of very heavy permanent fire brick construction, each kiln costing from \$5000 to \$10,000, according to size. It requires from 10 to 12 days steady firing to burn a kiln of brick, the final heat being carried as high as 2900 degrees Fahrenheit. During this burning by mechanical devices the elimination of water by absorption and the water in chemical bond is noted. It is also the shrinkage of the brick incident to the amalgamation of the clay particles. When the burning is completed the fire is drawn, the kilns are tightly sealed, every particle of air is shut off and the brick are permitted to cool slowly, requiring from 7 to 9 days. During this cooling the brick are thoroughly annealed, become homogeneous and form vitrified brick. Clays that will make common brick will not endure, and required heat for vitrified brick, and lack every essential element as above set forth.

The Denny-Benton Clay & Coal Co. make all their vitrified brick as above specified and mine all their clays from great shale deposits that combine every essential ingredient for vitrified brick of the highest quality. It has been demonstrated in many ways and is a matter of common history that brick burned and annealed as enduring to the end of time and withstanding the action of the elements of nature better than any stone formation and under the ravages of traffic as a wearing material when properly put in place, being uniform in size, make a smoother pavement, less noisy and easier on horses than any stone and endure during any ordinary business man's life.

**INCREASE SHOWN IN WORK**

Report for November Filed by County Clerk Fields.

The report of the business done by the Multnomah County Clerk's office during November, issued by County Clerk Fields yesterday morning, shows that nearly twice as many instruments were recorded last month as during November, 1907. The report also shows a substantial increase in the other business done by the office.

The report shows the number of marriage licenses issued in November, 1907, and November, 1908, to be the same, 200. Last month there were 29 divorces. Last month 220 instruments were recorded and 248 marginal releases given, while in the same month in 1907 instruments recorded numbered 124, and 124 marginal releases were given. The remainder of the report shows the following:

Notary commissions, November, 1908, 15; November, 1907, 15. Notary certificates, November, 1908, 14; November, 1907, 59. Articles of incorporation, November, 1908, 57; November, 1907, 24. Declarations of intention to become citizens, November, 1908, 53; November, 1907, 36. Citizens admitted, November, 1908, 16; November, 1907, 0. Liquor licenses, November, 1908, 2; November, 1907, 0. Medical licenses, November, 1908, 5; November, 1907, 1. Dental licenses, November, 1908, 5; November, 1907, 1. Hunters licenses, November, 1908, 248; November, 1907, 220. Physicians' certificates, November, 1908, 7; November, 1907, 9. Non-support cases, November, 1908, 7; November, 1907, 6. Probate Court cases, November, 1908, 55; November, 1907, 4. Insane commitments, November, 1908, 11; November, 1907, 10. Amount received for copies of instruments, etc., November, 1908, \$114.80; November, 1907, \$43.45.

**Deserted Wife Seeks Divorce.**

Josephine Jones has commenced suit in the Circuit Court to obtain a divorce from Charles T. Jones, whom she lured to Los Angeles, February 2, 1907. She asserts that he deserted her in October, 1907, without cause.

**CONTRACTS LET BY SWIFTS**

WORK WILL START AS SOON AS MATERIAL IS READY.

Foundations Ready and Brick Work on Six Buildings Will Soon Be Under Way on Peninsula.

Contracts were let yesterday for brick work of six buildings for the Union Meat Company's plant on the lower Peninsula. The big contract was secured by Blingham & McClelland, of Portland, the builders of the Wells-Fargo, Beck and other large structures in this city. The principal building to be started at once is the main slaughtering and packing-house, which is to be six stories in height, 130x230 in dimensions. This is to have an addition of four stories 130x75. Four of the remaining buildings are to be about 75x100. The tank building is to be 60x60, and of four stories. All these buildings are to have walls of sufficient thickness to carry additional stories if future demands require.

The contracting firm announced yesterday that they are ready to start on the buildings as soon as material and labor can be assembled. The contract involves an expenditure of something like \$300,000, which is exclusive of carpenter work. Bids for this portion of the plant will be received in a few days, the supervising architect of the Swifts being in the city in consultation with President Colt and the other officials of the Union Meat Company with reference to further letting of contracts.

Foundations for the new buildings are practically ready, those for the main buildings having been finished some weeks ago. Dockage and waterfront facilities on the slough have been constructed sufficient to answer for some time to come, but these will be extended as occasion requires.

A vast amount of grading and filling has been accomplished since the company decided to locate at that place, and the sites for the new enterprise as seen from the bridge of the Spokane, Portland & Seattle road gives some idea of the extent of the property to be built upon. It was announced yesterday that work on the cattle pens of the stockyards will be well under way in a short time.

**TO CURE A COLD IN ONE DAY**

Take LAXATIVE BROMO QUININE TABLETS. Druggists refund money if it fails to cure. E. W. GROVE'S signature is on each box. 25c.

25c safety razor at Eysenck's Pharmacy, 259 Morrison—4th and 5th.

# GRAY'S EXCLUSIVE CLOTHES STORE

Clothes for men and young men in the latest style conceits, of the famous Chesterfield make, known to be the finest ready-to-wear clothes produced in this country.

Having entirely closed out our Furnishings and Hat Departments, our entire attention will now be given to supplying to Portland's good dressers correct clothes for every occasion. The exclusive store is much better equipped to supply your clothing needs than the store which tries to supply all needs. This is the age of the specialist in all lines, and we are the leading specialists in our line. When in need of good clothes give us a call; if you're not already a patron, you will be after one visit. Chesterfield Suits priced \$20.00 to \$50.00; Chesterfield Overcoats and Cravenettes priced \$20.00 to \$60.00; Fine Trousers priced \$4.50 to \$14.00; Smoking Jackets priced \$5.00 to \$15.00; Bath Robes and Lounging Robes priced \$6.00 to \$18.00. Courteous salesmen ready to serve you.

269-271 MORRISON STREET **R. M. GRAY** 269-271 MORRISON STREET

The new home of Chesterfield Clothes, corner Fourth and Morrison Streets, will open February 1st, 1909

## CONTRACTS LET BY SWIFTS

WORK WILL START AS SOON AS MATERIAL IS READY.

Foundations Ready and Brick Work on Six Buildings Will Soon Be Under Way on Peninsula.

Contracts were let yesterday for brick work of six buildings for the Union Meat Company's plant on the lower Peninsula. The big contract was secured by Blingham & McClelland, of Portland, the builders of the Wells-Fargo, Beck and other large structures in this city. The principal building to be started at once is the main slaughtering and packing-house, which is to be six stories in height, 130x230 in dimensions. This is to have an addition of four stories 130x75. Four of the remaining buildings are to be about 75x100. The tank building is to be 60x60, and of four stories. All these buildings are to have walls of sufficient thickness to carry additional stories if future demands require.

The contracting firm announced yesterday that they are ready to start on the buildings as soon as material and labor can be assembled. The contract involves an expenditure of something like \$300,000, which is exclusive of carpenter work. Bids for this portion of the plant will be received in a few days, the supervising architect of the Swifts being in the city in consultation with President Colt and the other officials of the Union Meat Company with reference to further letting of contracts.

Foundations for the new buildings are practically ready, those for the main buildings having been finished some weeks ago. Dockage and waterfront facilities on the slough have been constructed sufficient to answer for some time to come, but these will be extended as occasion requires.

A vast amount of grading and filling has been accomplished since the company decided to locate at that place, and the sites for the new enterprise as seen from the bridge of the Spokane, Portland & Seattle road gives some idea of the extent of the property to be built upon. It was announced yesterday that work on the cattle pens of the stockyards will be well under way in a short time.

**TO CURE A COLD IN ONE DAY**

Take LAXATIVE BROMO QUININE TABLETS. Druggists refund money if it fails to cure. E. W. GROVE'S signature is on each box. 25c.

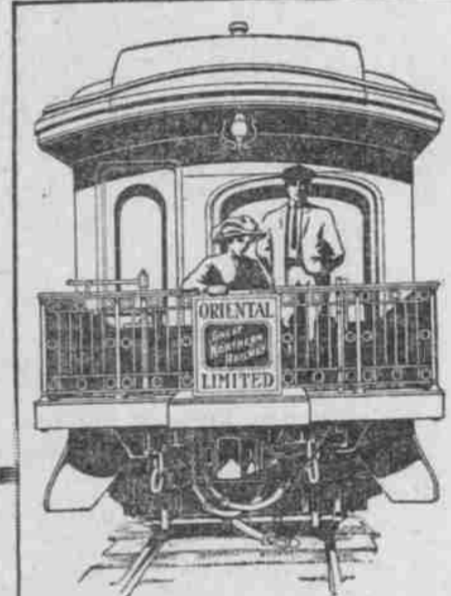
25c safety razor at Eysenck's Pharmacy, 259 Morrison—4th and 5th.

## Danger in Delay

If you would save at least half on your clothing, come at once to the Closing-Out Sale of Wholesale Clothing Stock at Front and Oak. The opportunity will last only a few days longer.

Men's Wool Coats, \$1.00  
Men's Wool Vests, 50c  
Men's Good Pants, \$1.00  
Boys' Knee Pants, 25c  
Men's Wool Suits, \$5.00

On sale at Northwest Corner Front and Oak Sts., in the center of the wholesale district, where rents are low.



On Your Trip East

Enjoy all the pleasure such a trip affords. The Compartment-Observation Car, Standard Sleeping Cars, Day Coaches and Dining Cars in daily service on

**The Oriental Limited**

were built with the idea of offering you the greatest degree of travel comfort. Leaves Seattle 9:30 p. m. daily. Try it on your next trip to Spokane, Minneapolis, St. Paul, Chicago and East.

Connecting train leaves Portland 2 P. M. daily via Seattle, and 6:30 P. M. daily via "North Bank Road."

H. Jackson, C. P. & T. A., 122 Third St., Portland, Oregon.

## Every Piano Marked in Plain Figures

**The WILEY B. ALLEN & CO.**  
304 OAK ST.



- NEW PIANOS ... \$150
- NEW PIANOS ... \$175
- NEW PIANOS ... \$200
- NEW PIANOS ... \$225
- NEW PIANOS ... \$250
- NEW PIANOS ... \$275
- NEW PIANOS ... \$300
- NEW PIANOS ... \$325
- NEW PIANOS ... \$350
- NEW PIANOS ... \$375
- NEW PIANOS ... \$400
- NEW PIANOS ... \$425
- NEW PIANOS ... \$450
- NEW PIANOS ... \$475
- UP TO.....\$1250

**NO DECEPTION  
NO SCHEMES  
NO JUGGLING  
OF PRICES**

**ABSOLUTELY  
ONE PRICE TO EVERY  
BUYER**

The Marked Price Is the Selling Price

## MERCHANTS NATIONAL BANK

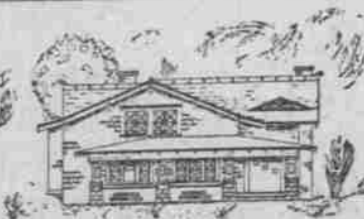
PORTLAND OREGON

**THE SELECTION OF A BANK**

New residents and firms which are just beginning business in this city are cordially invited to give this bank consideration as a suitable depository for their funds, and they are assured that all matters entrusted to the care of the bank will be treated with the greatest courtesy and efficiency.

3 PER CENT INTEREST PAID ON TIME DEPOSITS

RESOURCES OVER FOUR MILLION DOLLARS



**BUILD! BUILD! BUILD!**

We have several plans of bungalows. Call and see them if you contemplate building a home of your own. We can finance it for you. Plans and specifications at 1 per cent.

Building Department.

**COLUMBIA TRUST COMPANY**  
714 COUCH BUILDING 109 FOURTH STREET