

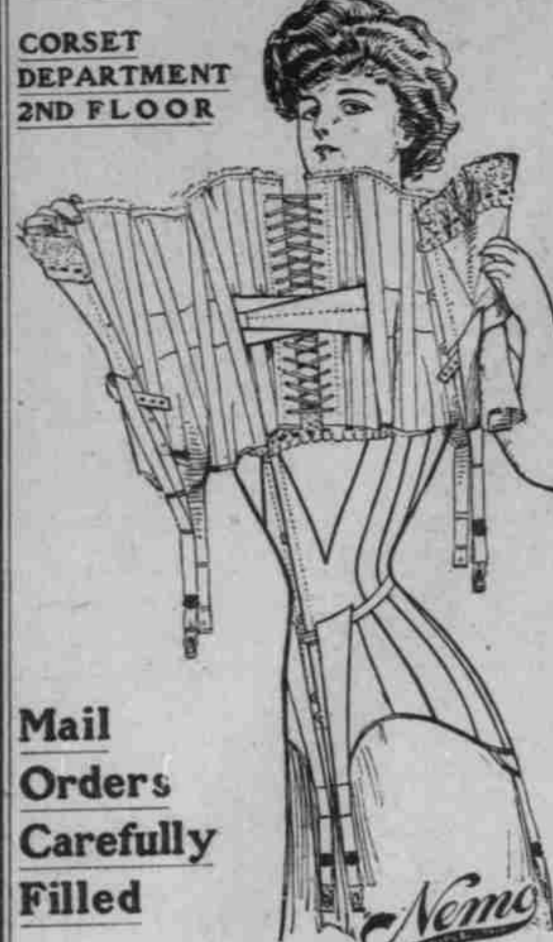
Portland Agents for "Trefousse" and "Perrin's" French Kid Gloves — Butterick Patterns and Publications — "Ostermoor" Mattresses

# Great Thanksgiving Sales at The Meier & Frank Store

## Headquarters for "Nemo" Corsets

"Nemo," International Corset, commands attention of women of the world—Its grace, its comfort, never fails to appeal to the woman who revels in an attractive figure—it's the "Corset of Quality," beautifully made and finished—"Nemo," the leader of fashion—The flattening-back model, the back-resting model, the self-reducing model, all finding great favor with the best-dressed women the world over—There's a model for every figure and expert corsetiers to fit you—We are chief distributors for the Northwest—A few of the best selling models are:

CORSET DEPARTMENT 2ND FLOOR



205—Swan Shape Corset for the tall, slender figure, with flattening back, made of white coutil; sizes 18 to 26. **\$2.00**  
158—Nemo Figure Builder, for slender figures, made of white batiste; short hips, and shaped satin bust; sizes 18 to 23; for. **\$1.50**  
500—Willow Shape Corset, for the medium and slender figure, with the new flattening back, made of extra fine white coutil; sizes 18 to 28, on sale for. **\$5.00**  
320—Self Reducing Corset for tall, stout figure; gives the up-to-date shape with the long, flattening back; made of extra strong white batiste; white only, sizes 20 to 36. **\$3.50**  
318—Same style as above, with **\$3.50**  
314—Self Reducing Corset for the short-waisted, stout women, short under arm, long below waist line; low bust; sizes 20 to 36; white or drab coutil; special. **\$3.50**  
312—Self Reducing Corset, for long-waisted stout women; drab or white coutil; sizes 30 to 36; on sale for. **\$3.50**  
304—Military Belt Corset for the medium figure, made with flattening back; **\$3.50**  
white coutil; sizes 19 to 26, at **\$3.50**  
353—Swan Shape Corset, with long back, for the tall figure; fine mercerized broadcloth coutil, in white; sizes 18 to 26; our price. **\$4.00**  
206—Swan Shape Corset, for the medium figure; made of white batiste; sizes **\$2.00**  
18 to 26; on sale at this low price.

351—Back Resting Corset, for medium and slender figure; brings relief and comfort to women who suffer from tired, aching backs, and gives the flat and slender hip effect; made of white coutil; sizes 18 to 26; for. **\$4.00**  
516—Self Reducing Corset, for tall, stout women, made of fine mercerized broadcloth coutil; sizes 20 to 36; white only; for. **\$5.00**  
518—Same material as above, made for short-stout women; low bust, long hips, short under arm; sizes 20 to 36, at **\$5.00**

Mail Orders Carefully Filled

BACK-RESTING No 351

515—Self Reducing Corset, with bust supporters; makes a stout woman appear slender; made of imported French coutil; in white; sizes 20 to 30; special price, each. **\$5.00**

**HYGIENIC, LIGHT AND STRONG**  
202—Cell Cloth Corset, for the medium and slender figure; made of a new cloth that is stronger and lighter than any other material used for Corsets; in white; sizes 18 to 23; special at. **\$2.00**

## Thanksgiving Linen Sale

### Sale of Table Damasks

Thousands and thousands of yards of high-grade Satin Table Damasks, 70 and 72 inches wide; beautiful patterns in grand assortment; standard Table Linens at a saving every shrewd buyer will appreciate. Take advantage. On sale as follows: 70-inch, regular 85c value, the yard... **.75c**  
72-inch, regular \$1.00 value, the yard... **.89c**  
72-inch, regular \$1.25 value, the yard... **\$1.00**  
72-inch, regular \$1.50 value, the yard... **\$1.35**  
72-inch, regular \$1.75 value, the yard... **\$1.65**  
72-inch, regular \$2.00 value, the yard... **\$1.85**

### Embroidered Cloths

Magnificent showing of fine imported hand-embroidered Cloths, round and square styles, in superb assortment. Unusual values, on sale at prices ranging from, each. **\$3.50** to **\$35.00**  
Plain and Fancy Huck for scarfs and towels; 18-inch to 54-inch; great special values, on sale at prices ranging from, each. **.25c** to **\$1.00**  
Tulle Padding, in all widths, in felled, quilted and knitted styles, the yard, from **60c** to **\$1.25**  
18-inch all-linen Checked Glass Towel, **12 1/2c** each; great special value, the yard.

### Sale Hemstitched Cloths

Beautiful quality, great values at these prices: 8-4 size on sale at this low price, each. **\$1.25**  
8-10 size on sale at this low price, each. **\$1.35**  
7-12 size on sale at this low price, each. **\$1.65**  
15-inch Napkins, in all the best patterns; splendid values, at these low prices, doz. **\$7.25** to **\$7.25**  
Hemstitched Sets on sale at extremely low prices: 8-4 cloth, 18-inch napkins, \$ 8 val., set. **\$ 7.00**  
8-4 cloth, 17-inch napkins, \$ 9 val., set. **\$ 8.00**  
8-4 cloth, 20-inch napkins, \$12 val., set. **\$11.00**  
100 pieces Silver Bleached Damask, best patterns, in great variety; 66 inches wide; the yard. **50c**  
best regular 75c values; on sale at, yard.

### Sets for Round Tables

Beautiful new Linen Sets for round tables; attractive patterns in all grades. By far the largest and handsomest showing in the city. Values we guarantee the best in the city. For the set: 9-4 cloths, 27-inch napkins, \$16 val. **\$14.00**  
9-9 cloths, 27-inch napkins, \$19 val. **\$17.00**  
9-4 cloths, 26-inch napkins, \$24 val. **\$22.00**  
9-12 cloths, 26-inch napkins, \$30 val. **\$27.00**  
9-14 cloths, 26-inch napkins, \$32 val. **\$28.00**  
12-14 cloths, 26-inch napkins, \$35 val. **\$30.00**  
Pattern Cloths and Napkins for round tables; magnificent styles, on sale at these low prices: 80x80-in. cloths, 26-in. napkins, **\$31.00**  
regular \$35.00 values, at the set.  
90x90-in. cloths, 26-in. napkins, **\$36.00**  
regular \$40.00 values, at the set.  
Special offering of 25 dozen all-linen hemstitched Tray Cloths; exceptional values, for, each. **.25c**  
20 pieces extra heavy 70-inch bleached Damask, best patterns; regular \$1.35 value, at, yd. **\$1.00**  
Cloths and Napkins to match; styles and sizes for both round and square tables; best patterns, unusual values, on sale at these low prices, set: 8-4 cloth, 27-inch napkins, \$14 val. **\$11.00**  
8-10 cloth, 27-inch napkins, \$15 val. **\$13.00**  
8-12 cloth, 27-inch napkins, \$16 val. **\$14.00**  
Centerpieces and Doilies on sale at low prices.

### 35c Ribbon at 25c Yard

10,000 yards of 5 and 6-inch satin and taffeta Ribbon; black, white and all colors; the **25c** best regular 35c quality, on sale at, yd.

### 35c Handkerchiefs 19c

500 dozen women's Swiss Handkerchiefs, seamed and hemstitched styles; beautiful, showy patterns, for fancy work; 35c values, each. **19c**

### Fine Neckwear at 25c

10,000 pieces of women's new Fall and Winter Neckwear, every new and pretty style, including jabots, rabats, stocks, cravats, etc., etc.; **25c** 35c and 40c values, on sale at, sp'L, each.

## Sale of 2000 New Chiffon Veils



Regular \$4.00 Values at 98c Each

Today and tomorrow our greatest sale of new and handsome chiffon veils—2000 of them bought from a large New York importing house at a ridiculously low price—As always, we invite you to share in our good fortune—Included are automobile veils, scarfs and hat drapes, 3 yards and 1 1/2 yards long—Embroidered, printed and velvet dotted effects in black, white, light blue, pink, navy, brown, green, red, grey—Beautiful styles in won-derful assortment—Values to \$4 each on sale at **98c**

### Ribbon Remnants at Half Reg. Price

Today and tomorrow, 15,000 Ribbon remnants at one-half regular prices. All styles, all grades, all lengths; pieces suitable for 1/2 Price hair ribbons, fancy work, etc.; take advantage of sale. 10,000 yards of 5-inch all-silk Taffeta Ribbon, in black, white and all colors; superior quality; best 35c value, on sale at, the yard. **19c**

## Mammoth Curtain Sale

1000 pairs white and ecru Net Curtains, with Cluny edging or Renaissance braid borders; 15 patterns to select from; 45 inches wide, 3 yards long; \$4.50-\$5 val., pr. **\$3.35**  
500 heavy tapestry Couch Covers, Oriental designs and colorings, fringed all around; 80 inches wide, 3 yds. long; \$3.75 val., ea. **\$2.65**  
500 heavy tapestry Portieres, with heavy fringes or silk cord trimming; all new, popular colorings; full size, 3 yards long, 50 inches wide; \$8.50 and \$9 val., pr. **\$5.35**  
\$1.50 white and ecru Lace Curtains, 98c point d'esprit or all-over figures; at, pair.

## Handbags \$11.50 Vals. Are on Sale at \$5.95

Included in this sale are all the new shapes and leathers, including pigskin, alligator, sealion, patent leather, seal, walrus and automobile leathers. All are handsomely lined and fitted with card case and coin purse. Come in all colors, sizes and shapes. The largest and handsomest assortment of fine bags ever placed on sale at this low price; regular \$11.50 values, your choice at. **\$5.95**

## Doll Show November 13 and 14

### Extraordinary Sale of Undressed Dolls



Get ready for the Doll Show, November 13 and 14, on Third Floor, 15-inch Dolls, jointed knee and hip; regular 60c values, ea. **.49c**  
75c Jointed Dolls, ea. **.39c**  
50c 16 1/2-in. Kid Dolls, ea. **.39c**  
Kid Dolls, jointed knee and hip; \$1.25 values, on sale at, ea. **.98c**  
\$1.75 values, on sale at **\$1.39**  
Kid body Dolls, full jointed arms, hip and knee; 13-inch; sleeping eyes, with eyelashes; the **98c**  
regular \$1.25 values, ea.  
17-inch full jointed Doll, same as above; best \$2.00 values, **\$1.69**  
22-inch Kid Doll, not jointed, the best \$1.00 values, at, each. **.78c**  
17-inch imitation Kid Dolls, hair stuffed, sleeping eyes; regular 50c values, each. **39c**  
values, on sale at the following very low prices: 16 1/2-in., regular \$3.00 values, on sale at **\$2.20** | 21-inch, regular \$4.50 values, on sale at **\$3.69**

## Our Great Annual Doll Show November 13 and 14

## Men's Suits and Overcoats at \$25

We direct particular attention to our unusual values and grand assortment of men's fine suits and overcoats at \$25—Never before have Portland men had the opportunity to buy fashionable apparel of equal quality at this favorite price—High-class ready-to-wear apparel that is even superior to custom-made garments—These \$25 suits and overcoats gathered from the leading New York, Rochester and Chicago manufacturers who have a wide reputation for the quality, fit and style of their product—Every garment guaranteed to be hand-tailored, fitted with best linings and findings, and to be a perfect fit—Included are the season's newest fashions for business and dress wear—All the latest patterns and colorings in all styles and materials—We strongly recommend to you **\$25.00** our \$25 suits and overcoats—2d Floor



New Fall and Winter apparel for boys and young men—The season's most desirable suits, topcoats, reefers, raincoats, etc., and every garment at a saving of fully 25 per cent on what equal styles cost at exclusive clothing stores

A November Sale of Dress Goods

## CELEBRATE 57TH BIRTHDAY

JAPANESE IN PORTLAND HOLD MEETING AT Y. M. C. A.

Imperial Edict, Forming Japanese Code of Ethics, Read and Speeches Are Made.

The fifty-seventh anniversary of the birth of Mutsuhito, Emperor of Japan, was commemorated last night by the local Japanese at a celebration in the Auditorium of the Y. M. C. A. The programme was under the direction of S. Ban, Ad-dresser were delivered by Y. Numano, Japanese Consul, Secretary Stone, of the Y. M. C. A.; British Consul James Laid-law and S. Kato. A feature of the celebration was the reading of the Imperial edict by J. Iwata, secretary of the Japanese Consulate. This edict was promulgated 19 years ago and constitutes the Japanese code of ethics. It counsels love of country and family and honor to parents.

Consul Numano in the course of his address read the latest edict of the Emperor issued shortly before the arrival of the American fleet. In this proclamation His Majesty urged his subjects to treat the prospective visitors with all courtesy possible. This edict was received by Consul Numano from the government only a few

## CITY GIVES RIGHT OF WAY

Georgetown Council Finally Accedes to Union Pacific's Offer.

SEATTLE, Wash., Nov. 2.—(Special.)—After two years of negotiation, during which the city officials and the representatives of the railroad have more than once been deadlocked, the Georgetown Council last night passed the ordinance vacating five blocks of streets in the northwest part of the city and granting to the Union Pacific the right to lay tracks for both passenger and freight purposes through the town.

IF YOU WANT HATS  
That are up to date, call at Le Palais Royal, 378 Washington street.  
El Rayo Havana Cigar.

## TRAIN LEAVES CORVALLIS

DEMONSTRATION EXCURSION TO TOUR VALLEY TOWNS.

Best Dairying, Farming and Fruit-growing Methods Will Be Explained by Experts.

OREGON AGRICULTURAL COLLEGE, Corvallis, Or., Nov. 2.—(Special.)—The farming demonstration train, made up of an engine, four express cars completely equipped, a sleeper and baggage car, and carrying eight members of the Agricultural College faculty, left this city today for a ten-day tour of the Willamette Valley.

The train is the largest and best equipped of its kind ever used in the United States. The purpose of the tour is to do missionary work in the interest of scientific farming. Lectures and demonstrations will be given on the subjects of animal husbandry, dairying, agronomy and horticulture.

## KEEP UP DEBATING LEAGUE

Whitman, Willamette and Pacific to Contest for Championship.

PACIFIC UNIVERSITY, Forest Grove, Or., Nov. 2.—(Special.)—The triangular debates between Whitman College, Willamette University and Pacific University will be continued this year. At a meeting of the local Debate Council this afternoon it was voted to favor the arrangement, while both of the other institutions desire to continue the league. Each college puts out two teams, representing both sides of the question, and three debates are held on the same evening at the different schools.

The arrangement was first tried last year and proved very satisfactory. Whitman won the championship.

A new ruling for choosing the question for discussion has been adopted. Each institution shall submit two questions, from which list, each school shall select three, giving first, second and third choices, and the question receiving the highest number of votes shall be discussed.

## FRANK L. SMITH MEAT CO.

"FIGHTING THE BEEF TRUST"  
For all this week you can get these choice, cheap meats at any of Smith's markets. When you come to Alder street see that Smith's name is over the door and then come in. On both sides of us our opponents have put markets, but pass 'em up, pass 'em up and come to Smith's.

226 Alder Street, between First and Second.  
512 Williams Avenue.  
791 Mississippi Avenue.  
Corner Fifth and Main Streets, Oregon City.  
12th St., bet. Commercial and Bond, Astoria.  
253 Taylor Street, Astoria.

## SIX MARKETS

Beef to boil.....	5c	Sirloin Steak.....	10c	Loin Roast Pork.....	15c
Beef for braising.....	5c	Hamburg Steak.....	10c	Loin Pork Chops.....	15c
Beef for baking.....	5c	Sirloin Roast Beef.....	10c	Rib Pork Chops.....	15c
Beef to stew.....	5c	Prime Rib Roast Beef.....	10c	Hams.....	17c
Beef for potpie.....	5c	Prime Rib Roast Beef, better cuts.....	12 1/2c	Breakfast Bacon.....	17 1/2c
Beef Liver.....	5c	Small Porterhouse Steaks.....	12 1/2c	Smith's pure Lard in 5-lb. pails.....	65c
Soup Meat.....	3c	Large Porterhouse Steaks.....	15c	Loin of Veal.....	15c
Pot Bones.....	3c	Legs of Mutton.....	12 1/2c	Bransts of Veal.....	8c-10c
Pot Roasts of Beef.....	6c	Legs of Lamb.....	15c	Veal Stew.....	8c-10c
Better Pot Roasts.....	7c	Shoulder of Mutton and Lamb.....	10c	Shanks of Veal.....	6c
Oven Roast Beef.....	7c	Mutton and Lamb Loin Chops.....	15c	Shoulder Roast Veal.....	10c
Choicest Pot Roasts.....	8c	Mutton and Lamb Rib Chops.....	15c	Better Cuts of Shoulder Roast Veal.....	12 1/2c
Shoulder Pot Roast.....	8c	Pigs' Heads.....	5c	Loin Veal Cutlets.....	15c
Shoulder Beefsteak.....	8c	Pigs' Feet.....	5c	Best Rib Veal Cutlets.....	15c
Chuck Steak.....	8c	Pigs' Hoofs.....	5c	Shoulder Veal Cutlets.....	15c
Brisket Corned Beef.....	6c	Shoulder Roast Pork.....	10c	Necks of Veal.....	8c-10c
Plate Corned Beef.....	6c	Whole Shoulder Pork.....	11c	Absolutely fresh Columbia River Salmon, 3 lbs.....	25c
Rump Corned Beef.....	6c	Center Cuts Shoulder Roast Pork.....	12 1/2c	All other kinds of fish at Smith's.	
Round Steak.....	10c	Shoulder Pork Chops.....	12 1/2c	Many different brands of Creamery Butter, per square.....	65c
Tripe.....	10c	Fresh Side Pork.....	12 1/2c	All full weight.	
Beef Tongues.....	10c	Corned Side Pork.....	12 1/2c	Ranch Eggs, per dozen.....	30c
Flat Bone Steak.....	10c	Dry Salt Pork.....	12 1/2c		
Tenderloin Steak.....	10c	Leaf Lard, fresh.....	12 1/2c		