

SMALL SHIPMENT OF BAGS

Steamship Numantia Arrives With Less Than 600 Tons From Oriental Ports.

COMES VIA SAN FRANCISCO

Government Will Receive Small Revenue for Duties on Imports on the Numantia.

Gunnies Heaviest Item.

The Portland & Astoria line steamship Numantia, from Hongkong and Japanese ports, via San Francisco, arrived yesterday.

charge ballast at the berth vacated by the Aster. The steamship Roma with fuel oil from San Francisco, arrived yesterday.

Arrivals and Departures.

PORTLAND, Sept. 13.—Arrived—German steamship Numantia from Hongkong and way ports; steamship Breakwater, from Coos Bay; steamship Roma, from San Francisco.

GRAIN TONNAGE EN ROUTE AND LISTED FOR PORTLAND—COMPLETE TO SEPT. 13

Table with columns: Name, Flag and Rig, Tons, From, Sailed. Lists various grain vessels and their routes.

GRAIN VESSELS IN PORT.

Table with columns: Name, Flag and Rig, Tons, From, Arrived. Lists grain vessels currently in port.

LUMBER VESSELS IN PORT.

Table with columns: Name, Flag and Rig, Tons, From, Arrived. Lists lumber vessels currently in port.

of matter for Eastern shipment and also two carloads of Chinese merchandise for transfer to the railroads.

The principal cargo for Portland was 200 bales of gunnies. In addition there is a quantity of Chinese merchandise and rice.

The gunnies will not be covered, close to \$2000 in duties and the balance of the cargo will not run far in advance of \$1500.

The action of the Harriman people in forcing the trans-Pacific steamers to discharge overland freight at San Francisco, is responsible.

BIRTHDAY OF CROWN PRINCE

Officers and Crew of Cruiser Puglia Will Observe the Day.

Tomorrow is the birthday of the Crown Prince of Italy and the day will be a festive occasion for local Italians.

STEAMER INTELLIGENCE

Table with columns: Name, From, Date. Lists steamers and their arrival/departure dates.

board and during the afternoon, visitors will be received by the Commodore, C. F. Candiani.

Marine Notes. The French bark Corni Bart will dis-

REAL ESTATE AND BUILDING NEWS

LAND SALES BRISK

Investors Secure Parcels of Portland Realty.

BUILDING IS ON INCREASE

Local Operators Agree That Activity Now Clearly Shown in the Market Will Continue Toward Year's End.

Activity in real estate dealing in the city and its suburbs continues encouragingly, and there is now ample evidence that the figures on land transfers and business and residence construction will surpass those of corresponding periods in the last few years.

During the last week there were a large number of important transactions, and the applications for building permits compared favorably with those applied for during the corresponding week last year.

Indicative of the great amount of building now in progress clearly the work being done on the Young Women's Christian Association building, the Beck building, the new Penton and the Oregon Hotel Annex.

Work is proceeding rapidly at the site of the new warehouse to be erected for the Pacific Paper Company.

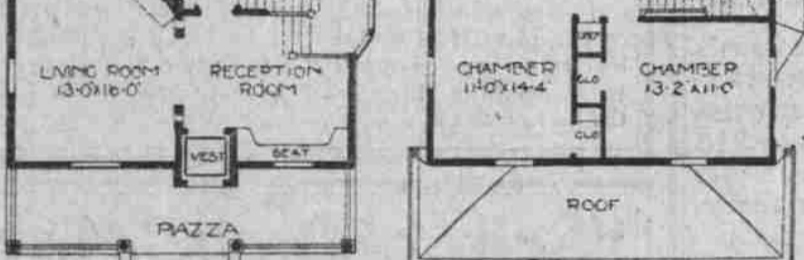
Work of a similar character has been going on for several weeks in the immense excavation for the Meier

A Commodious Colonial Home



Cost to build, exclusive of heating and plumbing, \$2100. Designed by Glenn L. Saxton, architect, 242 and 244, Security Bank building, Minneapolis, Minnesota.

Here is a splendid arrangement for a colonial residence on the square order. There are four large rooms in the first story, besides the pantry. They are all large and roomy; also well lighted. In



The second story there are four large chambers, bath, linen closet and a good-sized closet in each room.

& Frank Company's ten-story addition at Sixth and Alder streets. A hoisting engine, set high on timbers by J. C. Cook Co. has been raising dirt to the level of the sidewalk.

The Irwin-Hodson Company will soon be established in two-story brick building 180x100 feet with a full basement, at the southwest corner of Fifteenth and Gilson streets.

The steel columns for the first story of the Y. M. C. A. building have been placed under the supervision of Architects MacNaughton, Raymond & Lawrence.

It is reported that a three-story warehouse will be erected at Fourth and Everett streets for E. G. Crawford. It will occupy a lot 100x100 feet, and will cost \$25,000.

J. B. Bacon will build a \$1000 cottage at 37 Jessup street.

O. F. DeLorenz will erect a \$1500 house in Rhine street, between Milwaukee and East Thirteenth streets.

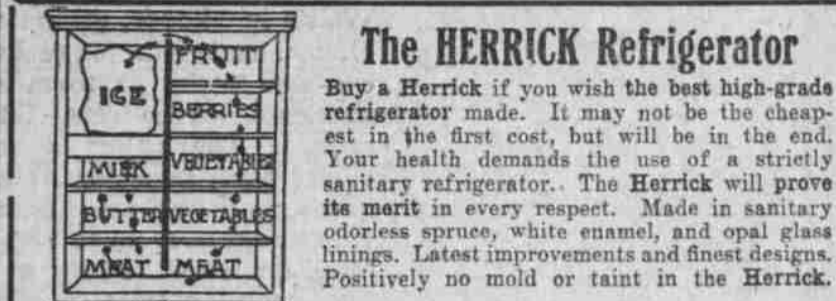
F. L. Peterson will build a \$2000 dwelling in East Thirtieth street, between Powell and Franklin.

H. E. Doherty will build a \$1400 dwelling in East Thirtieth street, between Clinton and Division streets.

E. E. Moore, for a \$1500 house for Sling-

BARRETT'S Gas and Electrical FIXTURES

Get Our Estimates 408-410 Morrison Street Phones: Main 122 Home A 4154



The HERRICK Refrigerator Buy a Herrick if you wish the best high-grade refrigerator made.

THE ELECTRICAL APPLIANCE CO. 406 Washington St. Phones: A 3881, Main 4854.

LOWE BROS. "HIGH STANDARD" PAINT Gives Best Results RASMUSSEN & CO. Second and Taylor Distributors

PHOENIX IRON WORKS Office and Works, Hawthorne Avenue and East Third Street. Phone East 29, PORTLAND, OREGON.

Architect Berndt has announced the award of the following contracts for the new Oddfellows' Temple at East Alder and East Sixth streets.

The large freight dock for the O. W. P. lines at the east end of the Madison bridge is being completed.

Architect Otto Kleiman is preparing plans for a store building for Anton Sechtem, to be erected at Twenty-first and Powell streets.

Architect F. J. Berndt says the owners of what will be known as the Charles K. Henry building have not yet determined how many stories it shall contain.

Whiting & Rountree have negotiated the plans for Emil Pettkau, to an Olympia, Wash., investor, of the lot and brick building on the west side of North Park street.

Architects Travis & Wilson are preparing plans for a seven-room, two-story residence for Dr. E. A. Marshall.

Architects Goodrich & Goodrich have completed plans for a new parish house to be connected with St. John's Episcopal Church at Sellwood.

H. W. Gerke intends to have a \$2000 dwelling erected at Arbor Lodge, S. C. Baker will build a \$2000 home at the corner of East Thirtieth and Division streets.

Architect W. L. Morgan has in preparation plans for an apartment-house of four stories, with basement. It will be erected in King street, between Washington and Wayne streets.

It is reported that a three-story warehouse will be erected at Fourth and Everett streets for E. G. Crawford.

J. B. Bacon will build a \$1000 cottage at 37 Jessup street.

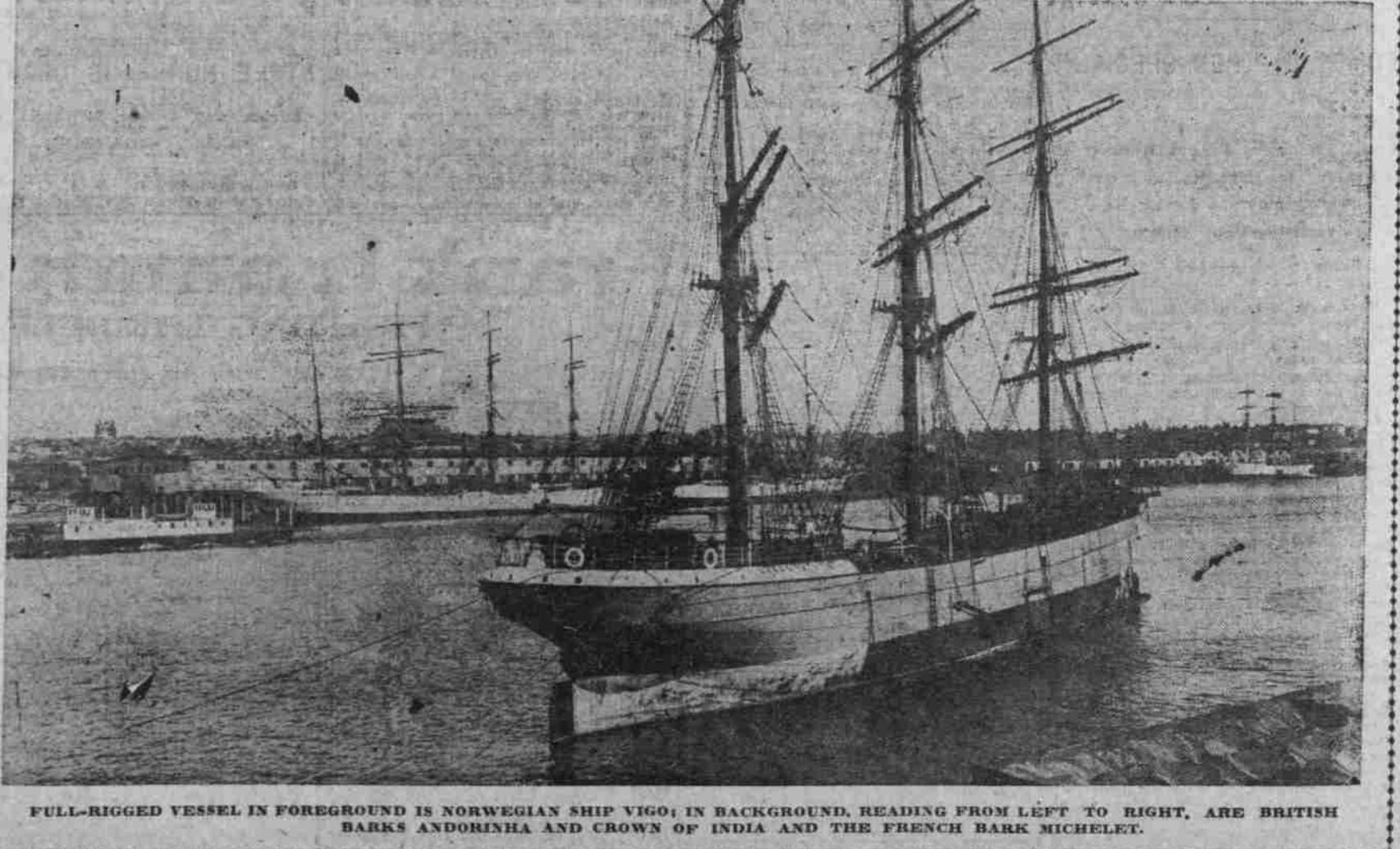
O. F. DeLorenz will erect a \$1500 house in Rhine street, between Milwaukee and East Thirteenth streets.

F. L. Peterson will build a \$2000 dwelling in East Thirtieth street, between Powell and Franklin.

H. E. Doherty will build a \$1400 dwelling in East Thirtieth street, between Clinton and Division streets.

E. E. Moore, for a \$1500 house for Sling-

QUARTET OF GRAIN-CARRIERS IN PORTLAND HARBOR READY TO TRANSPORT OREGON WHEAT TO EUROPE



FULL-RIGGED VESSEL IN FOREGROUND IS NORWEGIAN SHIP VIGO; IN BACKGROUND, READING FROM LEFT TO RIGHT, ARE BRITISH BARKS ANDORINIA AND CROWN OF INDIA AND THE FRENCH BARK MICHELET.

One of the most progressive sections on the East Side is that embraced by Waverly, Richmond and Ravenswood.

Elisworth street from East Twenty-sixth to East Forty-first; graded and cement walk and curb.

Taggart street, from East Thirtieth to East Forty-first; same.

Ivon street, from East Thirtieth to East Forty-first; same.

East Thirtieth street, from Division to East Forty-first; same.

Division street, from East Tenth to East Forty-first; same.

Twenty-one residences are in course of construction or have been completed within the past year.

A modern school building has been completed containing eight rooms.

Prescriptions filled at Eysaell's.