

FALLS AT OREGON CITY BOTTLED UP

Water Is Now Entirely Utilized for Industrial Purposes.

CONCRETE DAM COMPLETED

Wall, Which Has Been Erected at Cost of \$100,000, Varies in Height From Five to Twenty-Five Feet.

OREGON CITY, Or., Aug. 31.—(Special.)—Willamette falls have been bottled up, and for the first time in history the magnificent cataract of water has ceased to be. Ever since Oregon City was founded by Dr. John McLoughlin the falls have been one of the great wonders of the Pacific Northwest, but the commercial age has demanded the utility of the water, and the Portland Railway, Light and Power Company has just completed a permanent concrete dam around the brink of the falls.

Even the leakage is saved and all of the water that comes down the Willamette is diverted on the east and west sides of the falls to furnish power for the various industries.

Dam Contains 7500 Tons of Cement
The big dam, which was finished last Friday afternoon, contains no less than 7500 tons of cement and represents two separate stages of construction.

In 1905 a dam was built around the west side of the falls, but at that time the company had numerous projects under way, including the power station at Cazadero. Consolidation of the Portland General Electric Company's properties with the street and interurban railway lines was in progress, and the completion of the dam was deferred.

Last year the new concrete wall at the north end of the basin was constructed, and this summer the company commenced the work of finishing the huge dam from old Station A of the Portland General Electric Company, marking the site of the new Hawley Pulp and Paper Company's pulp mill, running the dam southerly along the east side of the falls, curving and forming a horseshoe around and across the head of the falls and connecting with the concrete dam built on the west side in 1904, thus making a complete and permanent concrete dam around the falls and down both sides. The new part of the dam is one-quarter mile in length.

Built Line to Wall.

All of this work has been in charge of T. W. Sullivan, hydraulic engineer of the company. He constructed a railway track on top of the dam from the west side and hauled all of the material by electric car. Four thousand carloads were used in this work, averaging one yard of cement to the car, and the entire new work was put in in thirty-nine working days, the workmen fighting the extreme leakage.

The concrete wall is from 5 to 22 feet in height, depending on the profile of the rock, and it was necessary to go through some deep canyons with as much as fifteen feet of water.

Will Prevent Leakage.

The old crib structure that surrounded the falls for so many years was just about gone and required excessive repairs. In the early season, while the water is reasonably high, it will be very easy to place plash boards on top of the dam, as pockets have been provided in the crest of the dam to receive the plash boards. During the extreme low water period sufficient water will be saved to develop at least 1,500 horsepower that has heretofore leaked out.

The Portland Railway, Light and Power Company has other plans in contemplation for the use of the water around Willamette Falls. It will not be many years before a huge station will be constructed on the east side of the falls. Plans have already been made for this power station, which will be built on the unit system, adding wheels and generators as they are needed.

New Mill Will Be Erected.

The new Hawley Pulp and Paper Company has a lease on the site of old Station A for five years, and after that time a new pulp mill will be built south of the present site. The Hawley company has secured the lease of the power that was originally granted to the Portland Flouring Mills Company, and during the high water periods, covering nine months of the year, will have ample power to operate the grinders, which require a large amount of water for power. In fact it is estimated that 100 horsepower per day is required per ton of pulp product. It is the common practice in paper mills to make up a huge amount of pulp, which is stored for use during the low water periods. In the finishing department very little power is necessary, and steam is used here, as it gives much better regulation in the operation of a paper making machine than water power does.

The cost of the new concrete dam around Willamette Falls, exclusive of the basin wall that was constructed last summer, is \$100,000, and this is the amount expended by the Portland Railway, Light and Power Company in sacrificing the beauty of the falls to the necessary development of the vast water power that is every year becoming more valuable.

Mills Close for Lack of Water.

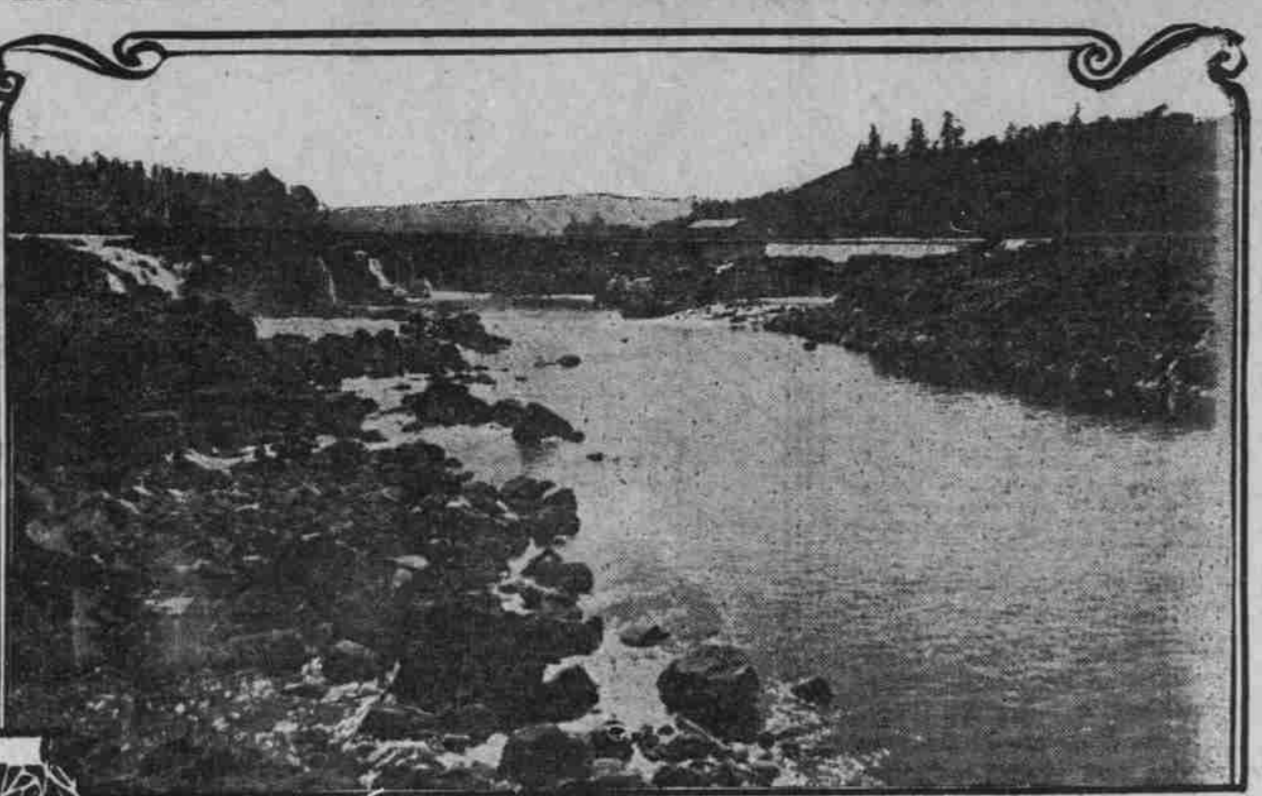
OREGON CITY, Or., Aug. 31.—(Special.)—The low stage of water in the Willamette River has caused mills A, B and C of the Willamette Pulp & Paper Company to cease operations until the rains set in. The river is so low that a sufficient amount of power cannot be developed to operate the waterwheels.

CHILD DROWNS IN DITCH

Gate Is Left Open and Little One Falls Into Water From Bridge.

DREWSEY, Or., Aug. 31.—The infant son of Mr. and Mrs. S. S. Williams, who reside about half a mile east of Drewsey, was drowned while playing on the bridge which crosses the big irrigation ditch a short distance from the house. The tot fell into the water and was dead before it was discovered that he was not with the other children. The front gate, which leads to the stream, had been left open by the older children, giving the little boy a chance to follow.

HOW BUILDING OF POWER DAM AT WILLAMETTE FALLS HAS LEFT PRECIPICE DRY



WILLAMETTE FALLS AS IT APPEARS TODAY



WILLAMETTE FALLS IN WINTER FROM A PHOTOGRAPH TAKEN TWO YEARS AGO

STORM OF PROTEST

People of Gladstone Want No Beer Saloon.

OPEN FIRE ON ERICKSON

Man Who Formerly Ran Concert Hall in Portland Arouses Clackamas Community by Petition for Liquor License.

OREGON CITY, Or., Aug. 31.—(Special.)—Intense excitement prevails in the little suburb of Gladstone, north of Oregon City, over the attempt of August Erickson, proprietor of the Clackamas Tavern, to obtain a license to retail liquor at his resort. This is Erickson's second effort to induce the County Court to grant him a liquor license. About one year ago he filed a petition, but such a storm of protest arose that his request was withdrawn.

Hopeful to avert popular disapproval, Erickson has announced his intention of petitioning the court to grant him a license to sell beer only at his place, but people who reside in Gladstone say that drunkenness is caused by beer as well as by stronger intoxicants, and that the absence of a municipal corporation will leave them without adequate police protection in the event of a disturbance that would be sure to occur.

WIZARD HAS RHEUMATISM

Harriman Will Stay Week Longer at Pelican Bay Lodge.

KLAMATH FALLS, Or., Aug. 31.—(Special.)—Owing to an attack of rheumatism E. H. Harriman has prolonged the period of his stay at Pelican Bay Lodge. He will remain there for another week and possibly longer.

CUT TO PIECES BY TRAIN

Youth Killed While Stealing Ride on North Coast Limited.

TACOMA, Wash., Aug. 31.—John Moore, of Bellingham, aged 16, while riding on a truck under a sleeper of the southbound North Coast Limited on the Northern Pacific Railroad, fell under the wheels about 12 miles south of Tacoma last night, and was ground to pieces. Fragments of the body were scattered along the track a distance of several miles. His companion, Lawrence Campbell, said they crawled upon the truck at Kent about 11 P. M.

ROBBER TERRIFIES WOMAN

Draws Gun, but Beats Hasty Retreat When She Calls for Help.

EUGENE, Or., Aug. 31.—(Special.)—During the last few days Eugene has had a siege of petty burglaries and holdups.

A burglar with a pistol entered the house of County Commissioner Edwards last night about 11 o'clock by way of the kitchen window, but he was discovered before securing anything except a hat, which he exchanged for his own.

At a later hour a man called at the home of Mrs. Barrett and, upon finding her alone, drew a pistol and pointed it at her, whereupon she slammed the door in his face, calling the names of her boys. The robber beat a retreat, probably thinking there were some men in the house. A safe in L. N. Roney's office on West Seventh street was broken open Friday night, but nothing valuable was taken. Thursday night robbers entered the residence of L. O. Beckwith. Mr. and Mrs. Beckwith were out of the city, but on their return today, they reported the loss of about \$150 in silverware and clothing.

EXTEND KLAMATH PROJECT

Contract Awarded for Building South Branch Canal.

OREGONIAN NEWS BUREAU, Washington, Aug. 31.—Contract has been awarded to W. H. Mason, of Klamath Falls, for the extension of the south branch canal of the Klamath irrigation project. The work consists of the construction of about seven miles of canal, involving the excavation and embanking of about 112,000 cubic yards of material. Mason's bid amounted to \$22,702.

"I'll take the same," used to mean one thing. Now it means he wants another Gordon Hat \$3

WIZARD HAS RHEUMATISM

Harriman Will Stay Week Longer at Pelican Bay Lodge.

KLAMATH FALLS, Or., Aug. 31.—(Special.)—Owing to an attack of rheumatism E. H. Harriman has prolonged the period of his stay at Pelican Bay Lodge. He will remain there for another week and possibly longer.

CUT TO PIECES BY TRAIN

Youth Killed While Stealing Ride on North Coast Limited.

TACOMA, Wash., Aug. 31.—John Moore, of Bellingham, aged 16, while riding on a truck under a sleeper of the southbound North Coast Limited on the Northern Pacific Railroad, fell under the wheels about 12 miles south of Tacoma last night, and was ground to pieces. Fragments of the body were scattered along the track a distance of several miles. His companion, Lawrence Campbell, said they crawled upon the truck at Kent about 11 P. M.

LAUNCH FIGHTS BIG SEAS

BLUE BELLE BUFFETED ABOUT FOR FIVE DAYS.

Captain Sets Out to Find Fishing-Ground and Encounters Stormy Weather.

NEWPORT, Or., Aug. 31.—(Special.)—After battling with heavy seas for five days in a 26-foot launch, Captain R. E. Voith and his companion, Frank Saltus, returned to this harbor yesterday morning.

Last Tuesday morning they left Newport in the little launch Blue Belle for a trial run to the Big Banks, 35 miles off shore, to examine into the possibilities of the halibut fisheries discovered by the United States Fish Commission steamer Albatross some years ago. The Blue Belle returned with seven large halibut, aggregating 900 pounds in weight. Captain Voith reports that all went well the first two days out. They found the banks and set their lines. These were carried away by some large fish, probably a shark, and they were compelled to resort to hand lines.

Wednesday morning a heavy southwest sea accompanied by sharp squalls caused the sea to rise so that the little launch made heavy weather of it. Finally, as the weather showed no signs of moderating, Captain Voith turned the bow of his little launch towards land and at dusk made land off Coos Bay.

The passage over the bar was safely made and Marshfield was reached at 9 o'clock the same evening. Here the Blue Belle was harbored until Saturday morning, when she once more went out to sea, making the passage up the coast to Yaquina Bay in 15 hours with a heavy sea running.

The trip of the Blue Belle, which is no larger than an ordinary pleasure launch, is considered as an unusually venturesome one, including as it did a heavy test of the ability of a launch of this size to stand seas that have kept much larger craft barbound all along the coast.

By the Cascade Development Company, with the capital stock of \$100,000. The incorporators are A. W. Mohr and W. A. Johnston, of The Dalles; P. T. Caties, of Portland.

The purpose of the company is to erect and operate a power plant on Lindsay Creek near Yreka Station, west of Hood River, for manufacturing and domestic purposes.

Builders Busy at Cottage Grove.

COTTAGE GROVE, Or., Aug. 31.—(Special.)—Cottage Grove has taken on rapid strides this season in the matter of building. More business houses have been erected in the last 12 months than ever before in the same length of time, and of more substantial nature, every structure going up on Main street this season being of brick. N. H. Martin and Mike Gebbelbeck announce they will build on the corner of Fifth and Main streets.

BIG REDUCTIONS

Fine Toilet Soap

This sale offers unusual advantages for soap savings. Dozens of different makes, grades and qualities of fine toilet soaps are offered for a few days at remarkably low prices. This is the soap sale you have been waiting for. You can find here just the kind of soap you like best, and a glance at the list below will convince you that prices are right.

- | | |
|---|---|
| Regal Toilet Soap, regular 25c box .19c | Sylvan Series, regular 25c box, sale .17c |
| Vernon Toilet Soap, regular 25c box .11c | Arbor Series, regular 25c box, sale .11c |
| Ruby Toilet Soap, regular 25c box .11c | Waldorf Toilet Soap, cake 3c, box 33c |
| Le Beau Monde Toilet Soap, reg. 25c .17c | Fragrant Glycerine, 3 cakes .11c |
| Benzoin Oat Meal Soap, regular 25c .15c | Jumbo Tar Soap, the dozen .54c |
| Scotch Oat Meal Soap, regular 25c box 19c | Supertar Soap, the box .33c |
| Old-Fashioned Oat Meal Soap, regular 50c dozen, sale price .33c | Transparosa, the box .41c |
| Old-Fashioned Elder Flower Soap, regular 50c dozen, sale price .33c | Glycerosa Soap, the box .19c |
| | Arcadia Series, the box .17c |
| | Jugens, 8 cakes, assorted .27c |

ORIGINAL OIL PAINTINGS

AT ONE-HALF PRICE

To make room for our new Fall stock of Pictures we are offering a large assortment of original Oils at just one-half the regular price. The lot consists of about 200 original paintings, all artist-signed, and among them may be found the works of such well-known painters as C. Albin, L. Dorres, F. Claiton, R. Fenson, E. Roy, H. Martin, and a number of others. The pictures are all sizes, up to 24x48, and all are in handsome double-deck hand-laid gold frames, and encased in shadow boxes. The subjects are of great variety, and include woodland, marines, heads, landscape, figures, etc. Regular prices range from \$10.00 to \$500.00. FOR A SHORT TIME, YOUR CHOICE JUST ONE-HALF.

DEMONSTRATION
U-AR-DAS
Toilet Articles
ON FIRST FLOOR
TRY U-AR-DAS BATH OF BENZOIN

WE FIT GLASSES
And Examine Eyes
AT REASONABLE PRICES
SATISFACTION GUARANTEED SECOND FLOOR

WE TAKE CANADIAN MONEY AT FACE VALUE

WOODARD, CLARKE & CO.
FOURTH & WASHINGTON

WE DO ARTISTIC PICTURE FRAMING

TABLE ROCK
FORMERLY MOFFETT'S SPRINGS

IT'S ALIVE

MINERAL WATER

IT'S LITHIA

SPARKLING REFRESHING HEALTHFUL

Medicinal Qualities, possessed exclusively by Table Rock Mineral Water, have been responsible for many remarkable cures in Rheumatism, Asthma, Neuralgia and Stomach Trouble.

THIS SPARKLING WATER IS THE FAVORITE TABLE DRINK AT LEADING HOTELS AND RESTAURANTS

Bottled at the Springs by TABLE ROCK MINERAL WATER CO., Table Rock, Wash.
Portland Agency, 605 Chamber of Commerce.

Gordon De Luxe
\$4
FOR SALE BY
A. B. STEINBACH & CO.