

Phases of Industrial Growth in the Pacific Northwest

RUSHES OUT LOGS

New "Yarder and Loader" in Commission Near Elma.

LOADS 200,000 FEET DAILY

Does Work of Two Donkey Engines, Besides Doing Away With Big Crew of Men for Loading of Cars.

ELMA, Wash., June 21.—(Special).—The S. E. Shade Lumber Company, a San Francisco corporation, of which W. R. Mack is local representative, owning large sawmills on Grays Harbor and extensive logging works near Elma, has installed a new combination "yarder and loader" that is attracting the attention of all loggers in this county. The company's camps have been visited by many interested in the logging business to watch the working of this new invention, and by all who have seen it handled. It is pronounced to be the most efficient machine yet made, and will load 200,000 feet a day; it will pick up a ten-ton log and land it on the car at any place as easily as a man would lay a footpick down.

One objection, however, that has been noticed, but which will be remedied, is that certain parts of the machine are too light for this timber. The machine is the invention of an Eastern man and was made in Duluth, Minn., in a region where logs are much smaller than on the Pacific Coast.

The loader cost \$500 and will pay for itself in a short time. It takes the place of two donkey engines, a loader and a yarder, with their crews. A piece of track is built through a tract of timber and all that is necessary is to cut the trees down and into sawlogs; no roads are necessary to haul out the brush and logs, but a steel cable an inch thick is run out from the loader and fastened to the log and the log is then drawn to the machine and hoisted high in the air and let down on the car. It is an exciting sight to witness the log come tearing perhaps a half mile out from the track in the woods and bounding over the treetops to the machine and then going flying in the air and down in place on the logging car.

In the opinion of well-known loggers who have watched the machine work, it is believed that it will come into general use in the logging camps. This invention, like many others that have been made in the logging and lumbering industry, is a great labor-saving one, besides permitting rapid handling of logs.

At the present rate of cutting and the means now at hand for cutting and manufacturing timber, the day of the logging industry, which has been such a great source of revenue to so many, will be near at hand.

COMPLETING CONDENSERY

McMinnville to Have Plant Large as Any in Country.

McMINNVILLE, Or., June 21.—(Special).—The main building of the Willamette Valley Condensed Milk Company, now under construction in this city, is nearly completed. In dimensions it is 125x175 feet in the form of an "L," and 50 feet wide, having a floor space of 12,600 feet. In addition a separate warehouse will be built, 80x120 feet. The buildings occupy a plot of four and a half acres of ground which will be parked and beautified, and will be completed in the latest improved condensing machinery, operated by Leon Chevalley, who learned his craft in Switzerland. The capacity of the plant is normally 1,000,000 pounds a day, producing 1,000 cases of condensed milk. This can be increased to 1,500 cases, consuming 135,000 pounds of milk. Already sufficient engines have been installed to run the machinery to its capacity, and it is the intention of the company to begin operations between September 15 and October. They will commence installing the machinery in July. J. Woods Smith, of Portland, is president, and Otto Olsson vice-president of the company, which has a capitalization of \$500,000. These men are numbered with the best of the stockholders. Among the other Portland stockholders are F. Joplin and F. W. Isherwood. Many McMinnville people, including both National banks, have secured stock in this enterprise that means so much for the prosperity of the town and surrounding country. It has been conservatively estimated that the plant is running to its full capacity it will distribute from \$30,000 to \$75,000 every month to the farmers and others. It will have from 50 to 60 people on the payroll. Each can of McMinnville condensed milk will bear the label "Buttercup Brand." Construction of the building under the supervision of G. G. Dietrich, the architect who has built nearly all of the condenseries in the Northwest.

FLOURMILL FOR BAKER CITY

Promoter Well Pleased With Outlook for Grain Supply.

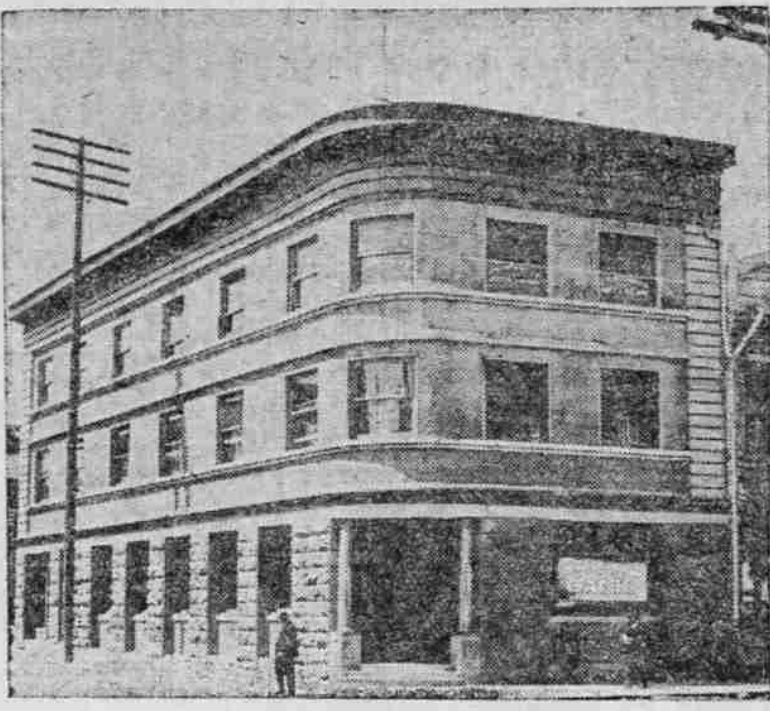
BAKER CITY, Or., June 21.—(Special).—H. W. Spear, who has just finished an investigation of the conditions here regarding establishing a flouring mill, announces that he is pleased with the outlook and will probably make arrangements at an early date to remove from his present location in Carmi, Ill., and establish a modern flouring mill. Several times lately Baker has had men here looking over the field with a view to engaging in the milling business, but it is doubtful if the mill will be started unless such good shape and the probability so assured as now.

Investigation shows that the wheat acreage has increased in this vicinity remarkably in the last two years, and since the dry lands have been farmed and proved beyond a question that they will produce wheat. It is thought there can be an ample supply raised here to keep a flouring mill busy. Business men look on the mill project as one of great importance, and all encouragement possible has been given Mr. Spear.

**Build Hospital at Baker.**  
BAKER CITY, Or., June 21.—(Special).—Ground has been broken here for the new Catholic hospital, which is to be erected at once. The building is to be of cut stone. Work on the bishop's two-story stone residence is progressing rapidly.

**Place for an Oregon Man.**  
WASHINGTON, June 21.—O. G. Whitlow, of Albany, Or., has been appointed bookkeeper in the treasury department, Washington, D. C.

NEW BUILDING OF FLANAGAN & BENNETT BANK, AT MARSHFIELD, OR.



NEW QUARTERS FOR BANK

MARSHFIELD INSTITUTION HAS FINE NEW HOME.

Concrete and Coos River Blue Sandstone Form Material Used—Upper Floors for Offices.

MARSHFIELD, Or., June 21.—(Special).—The new building of the Flanagan & Bennett Bank, of Marshfield, has just been completed and the occupants are moving in. The structure is at the corner of Front and A streets and is one of the most modern buildings of the city. It is regarded as one of the most handsome and substantial business blocks in this part of the state. It is built of concrete and Coos River blue sandstone. The banking front occupies the main part of the lower floor. Large marble columns are at each side of the corner entrance. Inside the banking fixtures are of mahogany on oak bases with oxidized copper grill work. There are two large vaults, one for the bank and the other fitted with safety deposit boxes. At the rear of the bank on the first floor are the offices of the Marshfield Water Company and the Western Union Telegraph Company.

The second floor of the building is occupied entirely by physicians and the third floor by lawyers. The woodwork on the upper floor is Oregon fir, especially selected for its choice grain. D. C. Lewis, of Portland, was the architect who constructed the building.

FINISH Y. M. C. A. HOME

YAKIMA PROUD OF SPLENDID \$70,000 STRUCTURE.

Fund Raised by Popular Subscription—Auxiliary Society Pledges Money for Furnishings.

NORTH YAKIMA, Wash., June 21.—(Special).—The officers of the Y. M. C. A. of this city, have formally accepted the \$70,000 building constructed for the association, from the contractors, and nothing remains to be done but to furnish the building for the occupancy of the young men who belong to the association. This will cost about \$2,000 and the accomplishment of the work of raising this money has been assumed as an obligation by the women of the various charitable and religious organizations, who have appointed a women's auxiliary to the association for this purpose.

EUGENE TO SHIP CHERRIES

Fruit Association Prepares to Send Dark Varieties East.

EUGENE, Or., June 21.—(Special).—The Lane County Fruit Growers' Association is making extensive arrangements to ship a considerable part of the cherry crop from this county this year. An expert packer from California will soon be on the ground to take charge of the work.

The cherries to be shipped will be principally the darker varieties, which are so much in demand as fresh fruit in the city stands—the Bing, Lamberts and Black Republicans. These varieties do not bring as good prices for canning as the Royal Anne, but they are more in demand as fresh fruit.

The association thinks it can ship the darker varieties east and realize as well as them as they are able to do here on the Royal Anne. If this experiment is successful it will give cherry raising, which is already a big industry here, an added stimulus. The association will also ship Royal Anne and other varieties of cherries, but particular attention this year will be given to the darker varieties.

NEW "YARDER AND LOADER," INSTALLED IN LOGGING CAMP NEAR ELMA, WASH.



WALK 2450 MILES IN ONE PAIR OF SHOES

REMARKABLE FEAT OF WM. JACKSON AND R. T. HAY IN THEIR SEATTLE TO CHICAGO TRAMP.

Shoes Worn by These Pedestrians Were the Product of the F. Mayer Boot and Shoe Company, Manufacturers of the Renowned Mayer Milwaukee Custom Made Shoes.

CAPTURE A \$1,500 PURSE



The Men Who Made the Tramp.

Over mountains and through snow, through wet, slush and mud, freezing at times and oppressed by heat at others, William Jackson and R. T. Hay, two sturdy Scotchmen, walked every mile of the way from Seattle to Chicago, just arriving within a few hours of the time that they had departed with a purse of Fifteen Hundred Dollars given by the Seattle Athletic Club for accomplishing this feat within the prescribed time.



As the Shoes Looked After the Journey.

An interesting fact in connection with this walk was that but one pair of shoes was worn by each of them on the 2450-mile journey, and that they never ripped or lost a stitch during the entire trip. The shoes worn in this contest were made by the F. Mayer Boot and Shoe Company, Milwaukee, who have established a great reputation throughout the country as manufacturers of the highest type of quality shoes; in consequence of which the business of this house has had a phenomenal growth. Nine thousand pairs per day is the present capacity of the Mayer factories.

As a matter of contrast, and to show that there is a marked difference in the quality of shoes, while Hay and Jackson completed their 2450-mile trip in a single pair of shoes that were practically intact at the end, J. T. Sutherland, another pedestrian, who had reached Owsosso, Mich., on a coast-to-coast walk, had worn out thirty-one pairs of shoes on his journey up to the time of his arrival in Owsosso of the leading brands manufactured by the F. Mayer Boot and Shoe Company are the Honorbit for Men; Leading Lady for Women; Martha Washington Comfort Shoes; Terms Cushion Shoes; Special Merit School Shoes.

The Washington Shoe Mfg. Co., Seattle, is the Western branch of the F. Mayer Boot and Shoe Company.

be a reality. Fortunately for the county, work on this building was not started until after great high-priced labor and material had passed. This will mean the saving of several thousand dollars to the taxpayers, and the building will be erected and finished for less money than was at first contemplated.

TENNIS TOURNAMENT OPEN

Splendid Play Marks Games for Ladd Cup.

Splendid tennis marked the opening of the play for the Ladd handicap cup on the Multnomah Club courts Saturday afternoon. The new courts pleased the tennis cracks, for they are lightning fast, and in spite of the ball game between the doctor and lawyers, and the bankers, that was going on at the same time, some exceptionally fast matches were played.

Of the eight matches played, six of them went into the three-set stage before the winner was declared. The schedule for this afternoon's play will be Wakeman vs. Wilder, Mackenzie vs. Knight, Zan vs. Nunn, Hubbell vs. Ladd, Forbes vs. Black, Warren vs. Warriner and Hughes vs. Alexander. The committee announces that players not appearing will be defaulted.

POLICE WIN ANOTHER GAME

Pitcher Evans Strikes Out 15 Men on Gibson Nine.

In a close and exciting contest the police yesterday won their fifth straight game of baseball by defeating the Gibson Nine of the East Side on the grounds at East Thirteenth and East Davis streets, by a score of 7 to 5. Larry E. Evans, twirler for the police, struck out 15 members of the Gibson nine and didn't allow a single hit. Had Evans had better support it is probable that the police would have scored a shutout. Clouts that should have been fielded were allowed to go by, with the result that the Gibson managed to bring home almost as many men as their opponents. In addition to his star twirling, Evans brought in two of the seven runs made by his team and allowed but two men to walk, although he twice hit Left Fielder Walsh, of the Gibsons.

The line-ups follows: Police—Evans, pitcher; Burchell, catcher; Mallett, shortstop; Wendorf, first base; Hipper, second base; Epps, center field; Rupert, third base; Murray, right field, and Robinson, left field. Gibsons—Jaghtner, third base; Zertzer, first base; Engnard, right field; Bodan, catcher; Goddard, shortstop; Walsh, left field; Harper, center field; Proford, second base, and Varders, pitcher.

Make Your Money Pay

The wealthy men of Portland will all tell you how. Ask any of them and the answer will be, INVEST ALL IN REAL ESTATE PROFITS

REAL ESTATE

OPENS UP FOR YOU a new field of effort; teaches economy, if you buy on easy terms; makes you appreciate the value of business rules and initiates you into the greatest source of profit in the world.

INTERESTS YOU IN A HOME, a subject of fascinating interest and one that should, sooner or later, command the entire attention of every man and woman born into the world.

BRINGS YOU IN TOUCH with successful business men and compels your interest in municipal affairs to a far greater extent than ever before.

GIVES YOU SOMETHING to live for, something to leave behind, something to anchor to in times of distress, something upon which to found a business of your own.

PROFITS

COMMAND INVESTMENTS—Without them, there would be no investing. Real estate is the basis of all value and is, consequently, the most popular investment for men of means, both large and small. These profits are better than savings interest.

APPEAL TO EVERYBODY, regardless of the amount to be invested. The larger the investment, the greater the profit, but the percentage remains practically the same. This gives you a chance.

IN REAL ESTATE, depend solely upon the movement of people. Whoever people are willing to go and live, profits are as certain to follow as night follows day.

DEPEND UPON LOCATION to a very large extent. A growing city is a gold mine to realty investors. They buy early and hold the delinquent up later.

BUT REMEMBER, THIS IS NOT ALL

HYDE PARK is located on the highest point of the peninsula HYDE PARK has graded streets, cement walks and curbs and city water

HYDE PARK Overlooks the Columbia and Willamette Rivers HYDE PARK is within the restricted district of the great East Side HYDE PARK is a delightful place to live for the rest of your life HYDE PARK is to Portland what Hyde Park is to Chicago HYDE PARK is a success, all over the civilized globe

The Jacobs-Stine Company has made a long and diligent study of Portland real estate conditions. It would be folly for them to buy, plat and improve a piece of residence property that their expert judgment pronounced unfit or undesirable for residence purposes. On the other hand, it would be to their everlasting credit if they selected and offered to you a property that bore out their excellent judgment in every particular. When this firm tells you, therefore,



COUPON NO. 2-A-O  
THE JACOBS-STINE COMPANY  
148 Fifth St., Portland, Or.  
Gentlemen: Please forward at once complete information relative to the assistance you will render to a man who wants to build a home in HYDE PARK.  
Name.....  
Address.....

that HYDE PARK is a first-class proposition, there are several things at stake. Chief among these is their reputation as real estate experts, so far as residence property is concerned, at least. Of this reputation they are exceedingly jealous, and it's a pretty safe bet that HYDE PARK is all and a little more than they claim for it.

The Jacobs-Stine Co.  
The Largest Subdivision Operators on the Pacific Coast  
148 Fifth St., Portland

Yacht Hawaii at San Pedro.  
SAN PEDRO, Cal., June 21.—The schooner Yacht Hawaii, the entry of the Hawaii Yacht Club for the trans-Pacific race from San Pedro to Honolulu, which starts July 4, arrived at the Breakwater here at 6:50 this afternoon. The yacht left Honolulu June 2 with Captain S. J. Harris and a crew of eight seamen. The voyage was pleasant and uneventful.

Spring styles Hanan shoes at Rosenthal's Rejuvin aids digestion. At all fountains.

Men's Diseases

MY SPECIAL TREATMENT WILL CURE YOU AND YOU NEED NOT PAY ONE CENT UNTIL YOU ARE WELL.  
My Fee \$10.00 In Any Simple Case I Cure You Pay Me After

Don't throw this announcement away. Cut it out, put it where you find it, and if what I have to say to you today is not of GREAT interest, watch for another talk. Shall I send you a treatise? I will if you live out of the city, and if you can call I will give you in addition a beautifully engraved chart, EXAMINATION FREE.  
By my method I am enabled to reach the vital spot with direct treatment, which drives every disease germ from the system by going to the root of the disorder. I always obtain prompt and satisfactory results, because my searching examination brings to light the nature and extent of the trouble. My experience in curing the diseases of men extends over a period of fifteen years. My facilities are the best and my treatment is perfect.  
I especially invite those who have deep-seated and chronic disorders to call and be examined. CONSULTATION AND EXAMINATION ARE FREE, and do not obligate you to engage my services.  
My offices are equipped with the most modern and scientific devices for the treatment and cure of ALL CHRONIC, DEEP-SEATED, COMPLICATED DISEASES. My fees are reasonable and within the reach of all. I treat not only, and confine my practice to PROSTATIC INFLAMMATION, VARICOCELE, STRICTURE, CONTRACTED DISORDERS, CONTRACTED BLOOD POISON, BLADDER AND KIDNEY DISORDERS. My offices are open all day from 9 A. M. to 9 P. M. Sundays from 10 to 1.

THE DR. TAYLOR CO.  
234 1/2 MORRISON STREET, PORTLAND, OREGON.