

CHAMBERLAIN HAS CARRIED MULTNOMAH

Democrat Will Have Plurality in the County.

MAY LEAD CAKE BY 1000

Morrow Defeats O'Day and Cameron Beats Manning.

STEVENS WINS, WORD LOSES

Bell and Olson Are Elected Justices of Peace.

VOTE CAST IS HEAVY

Clyde B. Aitchison for Railroad Commissioner Leads Hamilton and Young — University and Armory Bills Carry County.

Table with 2 columns: Office/Position and Name/Party. Includes United States Senator, Congressman, Justice Supreme Court, etc.

Governor Chamberlain has carried Multnomah County for Senator by a majority of probably 1000 over H. M. Cake...

CLEVELAND NOW AT HOME Stands Journey to Princeton From Lakewood, N. J., Well.

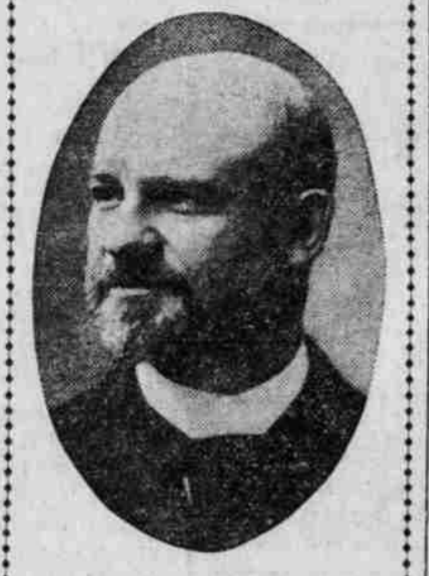
WORKMAN HEADS COWBOYS First at Rawlins in Endurance Race for Horsemen.

ASKS WILLIAMS TO SPEAK FOR HIM

TAFT HONORS GRAND OLD MAN OF OREGON.

Sole Survivor of Grant's Cabinet Invited to Make Seconding Speech at Chicago.

OREGONIAN NEWS BUREAU, Washington, June 1.—Secretary Taft today addressed a letter to George H. Williams, at Portland, inviting him to make a speech at the Chicago convention seconding his (Taft's) nomination.



Robert G. Morrow, Republican, Elected Circuit Judge, Multnomah County, Department No. 2.

Taft's invitation to make a seconding speech.

When asked last night if he would comply with the expressed wishes of Secretary Taft, Judge Williams said: "I am unable at this time to state whether I will make a speech seconding Secretary Taft's nomination or not. It will depend upon how I feel when I reach Chicago. If the weather is hot and I do not feel equal to the occasion, I shall not make the speech. If I arrive there in good health and the weather is not oppressive, I will do so."

SEVEN TRAINS TIED UP

Washouts in Montana Block Northern Pacific Main Line.

LIVINGSTON, Mont., June 1.—(Special.)—Seven overland Northern Pacific and Burlington passenger trains, carrying about 1800 passengers, are tied up in this city, with the prospect of being held here for about two or three days more, as the result of one of the worst washouts in recent history on the Northern Pacific.

FLOODS PLAGUE MONTANA Part of Butte Under Water—Yellowstone River Raging.

BUTTE, Mont., June 1.—Bridges crossing Silver Bow Creek, within the limits of Butte, are now threatened by the floods. Streetcar lines on the flats south of the city are under water. The Yellowstone River also is on the rampage. Trains are from 24 to 48 hours late on the Northern Pacific.

CLEVELAND NOW AT HOME

Stands Journey to Princeton From Lakewood, N. J., Well.

PRINCETON, N. J., June 1.—Ex-President Grover Cleveland, who returned to his home here last night from Lakewood, N. J., where he had gone about two months ago, arose early today and after a hearty breakfast sat reading on the veranda of his residence.

WORKMAN HEADS COWBOYS

First at Rawlins in Endurance Race for Horsemen.

RAWLINS, Wyo., June 1.—Charles Workman of Cody, Wyo., riding Teddy, was the first man to reach Rawlins in the Evanston-Denver endurance race.

PORTLAND'S REIGN OF ROSES BEGINS

Second Annual Festival in Full Swing.

CITY THROGGED BY VISITORS

Rex Oregonus Enters and Receives Keys From Mayor.

WARSHIPS BOOM SALUTES

Great Crowds Throng Streets to Witness Cavalcade—City Beautifully Decorated—Rose Show Opens This Afternoon.

Portland's reign of roses is begun. During five days to come the populace will worship at the shrine of petal beauty. The throbbing nerves of the city's business and industrial life will relax their tension for the time and this week will go to the full enjoyment of floral splendor unsurpassed.

The second annual rose festival opened auspiciously at high noon yesterday. The stroke of 12 found the city in its brightest attire. Gay colors were hung from every vantage point in the business district of the East Side and West Side.

Great Throngs Greet Rex Oregonus. While the day marked the formal opening of the June Rose Festival, it was in fact but a prelude to the festivities to come.

HOPES TO RECOVER SIGHT Gore, Blind Oklahoma Senator, Begins Hospital Treatment.

WASHINGTON, June 1.—In the hope that he may recover his sight, Thomas P. Gore, the blind Senator of Oklahoma, entered upon a course of treatment today at the Episcopal Eye, Ear and Throat hospital in this city under the care of Dr. William Holland Wilmer.

RUSSIAN CONVICTS DROWN

Boat Capsizes on Amur River and 80 Perish.

KHABAROVSK, Asiatic Russia, June 1.—Eighty-nine prisoners of state were drowned in a capsized boat in the Amur River.

CROSS CONTINENT IN A TINY AUTO

TWO WOMEN IN CHICAGO ON WAY TO PORTLAND.

Start Made From Portland, Me., May 12—Car an Eight-Horsepower Affair.

CHICAGO, June 1.—(Special.)—The women transcontinental motor tourists who set out from Portland, Maine, on May 12, determined to make a 4000-mile run overland to Portland, Oregon, arrived in Chicago today.



George E. Chamberlain, Democrat, Elected United States Senator.

only members of the expedition, which is the first of its kind ever undertaken by women automobilists.

They left their home in Sandy Point, Iowa, in April, and going to Portland, Maine, made ready for their journey westward to the Pacific Slope.

ELLIS PREPARING PLANKS

Wade Ellis, Attorney-General of Ohio, who has prospects of being the Ohio member of the resolutions committee of that convention and who was largely responsible for the conceded victory of the Ohio Republican platform, is here for a thorough understanding with the Secretary of War.

NO STRADDLE ON TARIFF

Mr. Taft has made no secret of his position on the tariff. He is for revision at a special session of the sixty-first Congress, to be called immediately after the inauguration, March 4, 1909.

CONTENT'S TODAY'S PAPER

The Weather. YESTERDAY'S—Maximum temperature, 59 degrees; minimum, 49 degrees. TODAY'S—Cloudy, with probably showers; southwest winds.

TAFT WILL MEET ISSUES SQUARELY

Will Stand for Roosevelt Policies.

VOLUNTARY PLEDGE EXPECTED

Vigorous Ohio Platform to Be Model at Chicago.

HIS POSITION ON REVISION

Protection Limited to Difference in Cost Between Home and Foreign Production—Federal Control of the Trusts.

WASHINGTON, June 1.—There will be no lukewarm indorsement of President Roosevelt and his policies in the Republican National platform, if the wishes of Secretary Taft and his friends have potency in the framing of that document.

BOURNE GOING TO EUROPE

Rumor Says He Will Sail Before the Chicago Convention.

OREGONIAN NEWS BUREAU, Washington, June 1.—Senator Bourne has informed some of his colleagues that he expects to sail for Europe in a short time to join his wife, who is completing a tour around the world.

CHAMBERLAIN'S ELECTION

Chamberlain's election by the people of Oregon for United States Senator by from 1000 to 1500 is indicated by the complete returns from the various counties in the state.

CHAMBERLAIN'S ELECTION

Chamberlain's election by the people of Oregon for United States Senator by from 1000 to 1500 is indicated by the complete returns from the various counties in the state.

CHAMBERLAIN'S ELECTION

Chamberlain's election by the people of Oregon for United States Senator by from 1000 to 1500 is indicated by the complete returns from the various counties in the state.

CHAMBERLAIN'S ELECTION

Chamberlain's election by the people of Oregon for United States Senator by from 1000 to 1500 is indicated by the complete returns from the various counties in the state.

CHAMBERLAIN'S ELECTION

Chamberlain's election by the people of Oregon for United States Senator by from 1000 to 1500 is indicated by the complete returns from the various counties in the state.

SALARY RAISED \$1000 AT A JUMP

POSTMASTER OF PORTLAND PROFITS BY BIG BUSINESS.

Increase Also Comes to 46 Other Oregon Postmasters, Thanks to Prosperity.

OREGONIAN NEWS BUREAU, Washington, June 1.—On July 1, the salary of the Postmaster at Portland will be increased from \$5000 to \$6000, because of the enormous growth in postal business in that city.



George J. Cameron, Republican, Elected Prosecuting Attorney of Multnomah County.

LITTLE BEAR A PATRIOT

Offers Services of Cree Indians in War With Japan.

HELENA, Mont., June 1.—Little Bear, chief of the vagabond tribe of Cree Indians, came to Helena today to make inquiry as to "how the war between Japan and the United States was progressing."

WASHOUTS IN MONTANA

Washouts in Montana Block Northern Pacific Main Line. Floods plague Montana. Part of Butte under water—Yellowstone river raging.

RUSSIAN CONVICTS DROWN

Boat capsizes on Amur river and 80 perish.

CROSS CONTINENT IN A TINY AUTO

Two women in Chicago on way to Portland.

CHAMBERLAIN'S ELECTION

Chamberlain's election by the people of Oregon for United States Senator by from 1000 to 1500 is indicated by the complete returns from the various counties in the state.

CHAMBERLAIN'S ELECTION

Chamberlain's election by the people of Oregon for United States Senator by from 1000 to 1500 is indicated by the complete returns from the various counties in the state.

CHAMBERLAIN'S ELECTION

Chamberlain's election by the people of Oregon for United States Senator by from 1000 to 1500 is indicated by the complete returns from the various counties in the state.

CHAMBERLAIN'S ELECTION

Chamberlain's election by the people of Oregon for United States Senator by from 1000 to 1500 is indicated by the complete returns from the various counties in the state.

CHAMBERLAIN'S ELECTION

Chamberlain's election by the people of Oregon for United States Senator by from 1000 to 1500 is indicated by the complete returns from the various counties in the state.

CHAMBERLAIN'S ELECTION

Chamberlain's election by the people of Oregon for United States Senator by from 1000 to 1500 is indicated by the complete returns from the various counties in the state.

CHAMBERLAIN'S ELECTION

Chamberlain's election by the people of Oregon for United States Senator by from 1000 to 1500 is indicated by the complete returns from the various counties in the state.

STATE GOES FOR CHAMBERLAIN U. S. SENATOR

Plurality Over Cake Will Be 1000, or Perhaps More

DOUBT ON STATEMENT NO. 1

Control of State Legislature for Democratic Candidate Is Uncertain.

BUT REPUBLICAN MAJORITY BIG

Hawley and Ellis for Congress by Large Margin.

MANY NEW COUNTIES DRY

Aitchison and Campbell Are Far in Lead for Railroad Commissioners — University Appropriation Bill Is Safe.

Table with 2 columns: Office/Position and Name/Party. Includes United States Senator, Representative First Congressional District, etc.

Chamberlain's election by the people of Oregon for United States Senator by from 1000 to 1500 is indicated by the complete returns from the various counties in the state.

Chamberlain's election by the people of Oregon for United States Senator by from 1000 to 1500 is indicated by the complete returns from the various counties in the state.

Chamberlain's election by the people of Oregon for United States Senator by from 1000 to 1500 is indicated by the complete returns from the various counties in the state.

Continued on Page 4.

