

Phases of Industrial Growth in Pacific Northwest

BEES POISONED BY SPRAY MIXTURES

Little Honey Gatherers Killed in Crusade Against the Codling Moth.

SUCK DEATH FROM PETALS

Big Problem Faces Farmers of Walla Walla Valley Lest Busy Bee and Fruit Pest Be Killed Together.

WALLA WALLA, Wash., Feb. 9.—(Special.)—Will the codling moth be exterminated in this valley at the expense of the bee industry? Will the orchard pest and the little honey maker die together? These are questions which are agitating many in this section of the state. While men have been fighting with deadly poisons the orchardist, the same men with the same poisons, have been killing bees by millions as they attempt to suck the nectar from the poisonous blossoms upon the orchard trees. The problem is becoming a serious one.

Bees have been kept in most of the orchards of the valley for many years, and with spraying the codling moth, the spraying has become so troublesome that spraying was resorted to generally. While the spraying was ineffective in many cases, the bees were not concerned, the bee industry suffered from the start, and it was found that even though but little of the poison reached the petals of the blossom, it proved a death-dealing agent to the bees. This is when it sought nectar to carry to its hive for winter. It is estimated that from 40,000 to 50,000 bees form a colony, and in some cases half the number died before spring was taken to prevent further poisoning. In fact, it is almost impossible to keep bees from an orchard while it is in bloom, even though the hives be removed several miles from it. There are thousands of colonies in the valley that have suffered severely already.

Feed Bees on Alfalfa.

The trouble has practically brought about a change in the Walla Walla Valley. Orchard blossoms have given way to the delicate purple petals of the alfalfa fields, and the places which knew the bees in years ago, are now filled with no more, perhaps, until a poison is found that will kill moths and spare bees, or until the moth shall have disappeared entirely. While in former years bees abounded in all the small orchards, they have been moved back toward Hudson Bay, where alfalfa fields cover a great part of the country and where no orchard trees have to be sprayed.

The experience of this valley is but the experience of the Yakima and Wenatchee valleys, where spraying has wrought havoc with the bees. It is here, in Yakima it has been held by many that bees could be no longer raised where trees were grown, and in consequence the alfalfa fields back and back as the orchard encroached upon the older fields. Alfalfa is usually the first crop to be grown on irrigated lands, but after the "wild" is worked out of the soil, orchards and small fruits are planted.

Scope of Honey Industry.

It is estimated that 300,000 pounds of honey is produced in the Walla Walla Valley. Perhaps the average yield of a colony is about 100 pounds, although double that amount is frequently taken from a hive during a season. This will give as a total 300 colonies which are scattered over a large part of the valley, but are especially to be found in the alfalfa district. Figuring the average colony at 20,000 bees, the number of bees taken as a fair estimate by beekeepers here, will give a total of 10,000,000 bees, whose combined efforts go to make up the sum total of the beekeepers' profits one year after another. It is seldom that honey sells on the local market, at wholesale for less than 12 1/2 cents per pound, making an average yearly profit of nearly \$12.50 per colony. The active colony during a good flow of nectar in alfalfa, it is said that fully 15 pounds of sweetness is stored away in one day.

Poison is the bee's most dangerous enemy. The yellow jackets, a busy insect with propensities for larceny and highway robbery, needs to be kept in check by keepers by robbing hives and killing off bees by the slow process of starvation. The pest can be trapped with proper appliances, but it is better to prevent attacks on weaker colonies. Moths also cause trouble, but they are rapidly killed out when once understood. Modern hives have several wonders in the care of bees and in protecting them from ravages by moth and yellow jacket.

NEW HOTEL FOR SODAVILLE

Rumored Portland Physician Will Erect \$10,000 Structure.

ALBANY, Or., Feb. 9.—(Special.)—That a Portland physician will erect a \$10,000 hotel and sanitarium at Sodaville during the next three months is a report which has gained foundation in the little mineral springs city five miles southeast of Lebanon. No names have been given publicly, but it is said that the improvement is an assured fact and that the hotel will be open for use during the coming summer season.

The hotel at Sodaville was destroyed by fire last summer and the former owners do not intend to replace the burned structure. Because of the splendid mineral springs at Sodaville the little town enjoys considerable summer resort patronage, and a hotel is a profitable venture for a few months of each year, but is afforded little traffic otherwise. But because of the medicinal qualities of the Sodaville water the new sanitarium will be operated in connection with the hotel, and the springs will afford an attraction the year round.

The mineral springs at Sodaville have been famed for their water for years, and about 15 years ago the state took charge of them and the Legislature passed an appropriation for the erection of a building over the springs and for proper care and maintenance. More money was needed than was appropriated, but it was not forthcoming and the springs have

never received the attention they deserved. Another drawback to the springs is that Sodaville enjoys no railroad communication and the town must be reached by stage from Lebanon, five miles away.

VALUABLE STONES IN GRAVEL

Albany Man Makes Finds on River Bars.

ALBANY, Or., Feb. 9.—(Special.)—That the gravel bars of the Willamette River are full of valuable stones is evidenced by the number found by J. G. Crawford, of this city, in the past year. People spend hours, says Mr. Crawford, searching on ocean beaches for stones, which can be picked up in ordinary gravel bars where no one ever thinks of searching. On the Willamette just above and opposite this city is a wide gravel bar and on this during the past year Mr. Crawford has found the following stones and minerals: Agates of various colors, cornellans, various shades of Jasper, conglomerate Jasper, white Jade, feldspar which resembles the blue ground of South Africa, indicative of diamonds; chalcodony, silicas of various colors, black obsidian, black and red obsidian, moon stones, opals, rubinated quartz, Thompsonite, serpentine, scapolite, sandstone, sapphire, phalun and millerite, composed of iron and sulfur. On this same plain-appearing gravel bar Mr. Crawford has found in his searches in the past year a fossil shark's tooth, primitive axes, petrels and mortars and paleoliths.

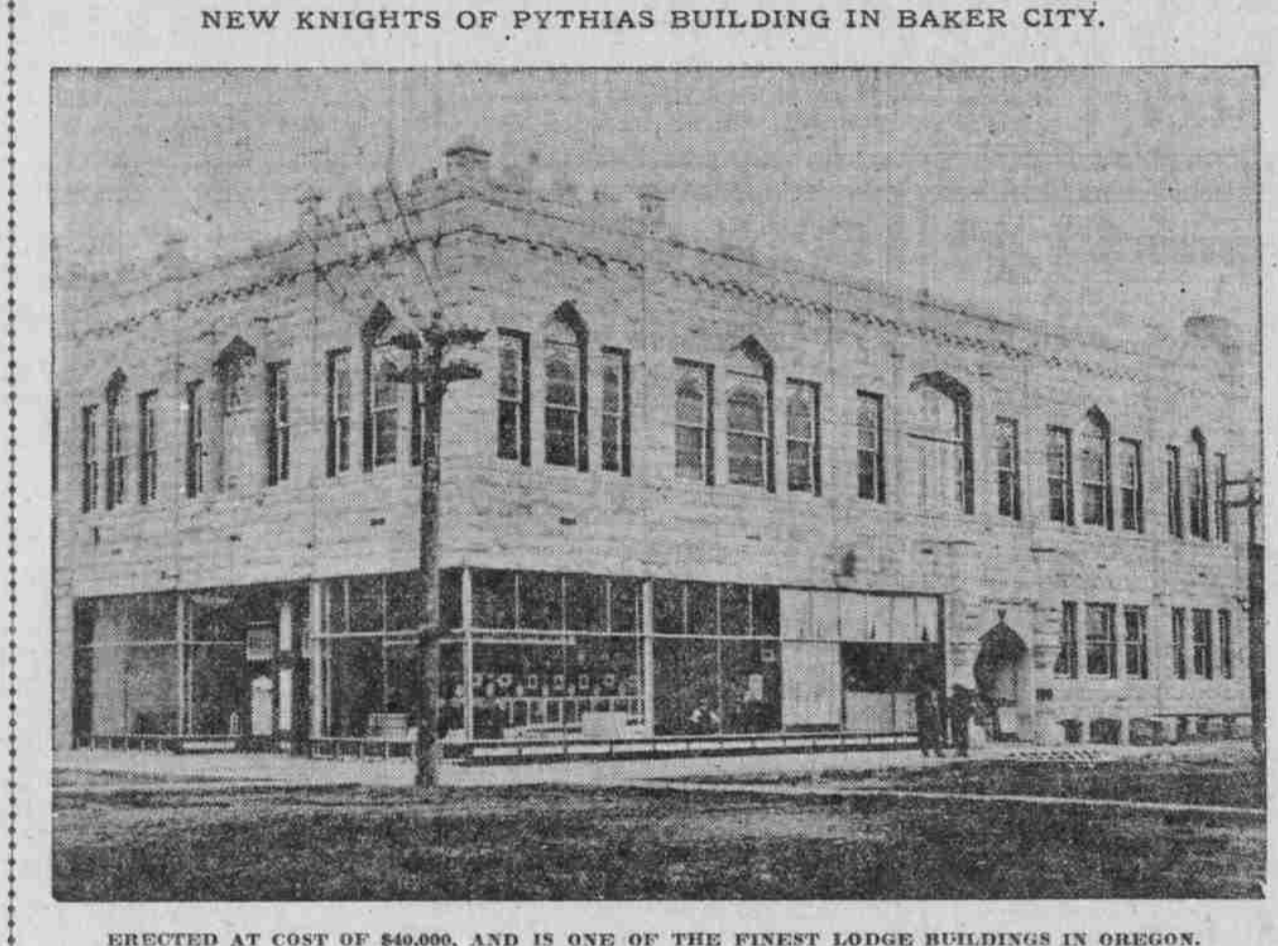
the order and the name of the lodge. It was intended to dedicate the building February 17, the anniversary of the order, but owing to unavoidable delay, the dedication will not be held until some time in March.

ACTIVITY THROUGH PALOUSE

All Lines of Industry Resume With Approach of Spring.

SPOKANE, Wash., Feb. 9.—(Special.)—With the approach of Spring the unusual signs of business activity are being manifested all over the inland Empire country, and here, too, the predictions freely made that the coming Summer will be a good one. Almost every day comes reports of construction work, mining and lumbering being resumed. The demand for laborers is growing stronger all the time.

NEW KNIGHTS OF PYTHIAS BUILDING IN BAKER CITY.



ERECTED AT COST OF \$40,000, AND IS ONE OF THE FINEST LODGE BUILDINGS IN OREGON.

The Potlatch Lumber Company's big mill, at Potlatch, Idaho, is now running six days of the week, and employing many men. In the Clearwater country in Idaho many smaller mills are busy. In the timber country north of Spokane logging operations began as soon as the snow fell a few weeks ago and still continue.

NEW CASTLE AT BAKER

KNIGHTS OF PYTHIAS ERECT FINE BUILDING.

Stone Quarters, Costing \$40,000, Will Be Dedicated by Grand Lodge, No. 8, in March.

BAKER CITY, Or., Feb. 9.—(Special.)—One of the finest lodge buildings in Oregon will be the castle of the Knights of Pythias in this city, which is rapidly nearing completion. The structure covers a ground space of 52x 105 feet, and is two stories high, with a basement. In the rear of the basement will be located the clubrooms and the gymnasium of the lodge. The first floor will be occupied with stores and offices. The second story contains a large amusement hall and lodgeroom. There is also a hall between the balcony and the lodgeroom in the rear.

The building is constructed of natural gray stone, and the front and half of one side contain large plate-glass windows for display purposes. The cathedral windows in the second story add greatly to the beauty of the building, while in the front and side are memorial windows, showing the emblem of the order.

In railroad work there is also renewed activity. Reports come from Pasco that work will begin at once on yards and tracks there by the Spokane, Portland & Seattle.

A force of miners has been working on the Peacock all winter, and has developed one of the biggest copper mines in the United States. On the seven Devils district, the Peacock has been opened up. A 60-foot cross-cut has been run into this mass of ore, exposing more than 200,000 tons of ore to view. The average grade of the Peacock ledge more than 15 per cent copper, and much of it will go 60 per cent.

The Seven Devils has long been regarded as one of the largest and richest copper deposits in the West, but lack of transportation has retarded its development. There is unlimited water in the district, and some of the finest pine timber in the West. The company also contemplates the construction of a number of sawmills along the line of the railway, and will cut and ship lumber.

MANUAL TRAINING IN EUGENE

Superintendent of Schools Plans Improvements to System.

EUGENE, Or., Feb. 9.—(Special.)—Since taking charge of the city schools in September, Superintendent L. R. Alderman has been doing all in his power to establish departments of manual training and household economics, especially in the first eight grades. For several months sewing has been taught through the cooperation of the school teachers with some of the women of the town, and the first steps toward including manual training are being taken.

Several hundred boys are now working at home building birdhouses and within a short time an exhibition of their work will be made and prizes awarded for the best birdhouse. Local hardware stores have offered sets of tools to the most successful young mechanic and it is safe to say that the boys will be well equipped to hold the structures at present under way. It is hoped that some of the citizens will become efficiently interested in the work of the boys to assist in the establishment of a permanent shop until the district takes it upon itself to see that the department of manual training has the requisite support.

TO DEVELOP MINES

Company Formed to Operate in Idaho District.

OPEN UP SEVEN DEVILS

Capital Secured for All Purposes and Practical Mining Men Are at the Head of the Project.

WEISER, Idaho, Feb. 9.—(Special.)—A new era has opened for the Seven Devils copper mining district, so long retarded by lack of transportation facilities. Last Summer W. Henry Harris, of New York, and George W. Boggs, of Baker City, both practical mining men, secured a 10-year lease on the Peacock and other properties belonging

to the American Mining Company, of Helena, Montana. At the time of the panic last Fall they had planned for extensive work during the winter, but they were unable to secure the money to carry on the work as planned. During the past two months Mr. Harris has been in the East securing capital, and has interested in his associates a number of the wealthiest men of Port Wayne, Indiana, at the head of which is Judge J. H. Alden. The company organized by Mr. Harris has sufficient capital to develop the mine and furnish means of transportation and smelting facilities.

Eight miles from Weiser is a complete, up-to-date smelter, constructed for the purpose of reducing the copper ore of the Seven Devils district. This plant was never run a day, the company constructing it having become bankrupt. Mr. Harris has secured an option on the plant, and left here Friday morning for Denver to close the deal. The plant has a capacity of 200 tons per day. This will be increased immediately to 400 tons. It will also be made a custom mill, and will buy ore from the mines.

The next plan of improvement is the building of a railroad from some point on the Pacific and Idaho Northern Railway, that runs from this city to within 50 miles of the property. It is the intention to construct a narrow-gauge road. The ore would be delivered on the Pacific and Idaho Northern cars, and by that road carried to the smelter, which is on the line of the road. The lack of transportation has been the chief drawback to the development of the Seven Devils district.

A force of miners has been working on the Peacock all winter, and has developed one of the biggest copper mines in the United States. On the seven Devils district, the Peacock has been opened up. A 60-foot cross-cut has been run into this mass of ore, exposing more than 200,000 tons of ore to view. The average grade of the Peacock ledge more than 15 per cent copper, and much of it will go 60 per cent.

The Seven Devils has long been regarded as one of the largest and richest copper deposits in the West, but lack of transportation has retarded its development. There is unlimited water in the district, and some of the finest pine timber in the West. The company also contemplates the construction of a number of sawmills along the line of the railway, and will cut and ship lumber.

MANUAL TRAINING IN EUGENE

Superintendent of Schools Plans Improvements to System.

EUGENE, Or., Feb. 9.—(Special.)—Since taking charge of the city schools in September, Superintendent L. R. Alderman has been doing all in his power to establish departments of manual training and household economics, especially in the first eight grades. For several months sewing has been taught through the cooperation of the school teachers with some of the women of the town, and the first steps toward including manual training are being taken.

Several hundred boys are now working at home building birdhouses and within a short time an exhibition of their work will be made and prizes awarded for the best birdhouse. Local hardware stores have offered sets of tools to the most successful young mechanic and it is safe to say that the boys will be well equipped to hold the structures at present under way. It is hoped that some of the citizens will become efficiently interested in the work of the boys to assist in the establishment of a permanent shop until the district takes it upon itself to see that the department of manual training has the requisite support.

I want to meet every ailing man in the City of Portland who is suffering from any special disease of men. I want to meet every man in the State of Oregon who needs my treatment. I have something to say to you that will prove of immense value to you in recovering your lost power, your wasted vitality and your ability as a man. See me first and you will not have so many specialists to see before you get cured. Years of study and special work have placed me at the top of the medical profession of those who treat and cure diseases of men. I guarantee you a cure for a reasonable fee, which you may pay when cured. I examine you free and give you advice that is valuable.

Men, Isn't This Best?

Is it not better to treat with a medical institute composed of men scientifically trained to cure and who are men of standing and ability than to treat with self-styled, so-called specialists of limited experience, whose vaunted cures are no cures at all? We are the leading specialists in Portland and our cures are thorough and permanent. Talk with us about your ailment and a personal interview will convince you that we know our business.

If this meets the eye of a man who, while yet in his prime, through some weakness is going lame, or instead of forward, I want him to come and let me show him how I am taking broken-down wrecks of humanity and making them strong and healthy. I don't care what has caused the trouble, nor what has failed to cure them. I can cure them and make them better and stronger than they ever hoped to be. Just because some other specialist has failed to cure you, don't you give up. I should like to see you. My treatment for MEN'S WEAKNESSES and other diseases is as different from other specialists' manner of treatment as day is from night.



OUR SPECIAL FEES

Varicocele	\$5
Neuritis	TO
Atrophy	\$30
Wasting	
Limp	
Blindness	
Stomach	
Bladder Ailments	
Kidney Ailments	
Frostate Ailments	

MEN'S DISEASES

No incurable Cases Accepted. There is no risk, for I do not treat incurable Cases under any consideration. I do not experiment or use injurious drugs to ruin your system.

NERVOUS DEBILITY.

Cured in a few weeks. Improvement from the start. If you suffer from loss of energy and ambition, feel tired when you arise in the morning, have bloodlessness, spots before the eyes, and feel you are not the man you once were, I will cure you for life.

TISSUE WASTE.

Either partial or total, overcome by my Vigorel Absorbent Pad for weak, diseased men. Call and I will explain why it cures when all else fails. A friendly chat will cost you nothing. Call at once, and don't delay.

URETHRAL OBSTRUCTION.

Cured by absorption in a short time; no pain, no cutting, no operation. By my method the urethral canal is healed and entire system restored to its healthy state. No failure, no pain or loss of time.

ELECTRICITY.

Properly applied with my Absorbent treatment gives old men the vigor of youth, makes middle-aged men strong and revitalizes the nerves when exhausted from overwork or worry. It cures nervous and general debility, loss of ambition, lame back, etc., etc., concentrating your thoughts and the whole train of symptoms that result from the above causes. If your system has been overtaxed from any cause consult us at once and be made strong again.

ADVISE ALWAYS FREE.

ST. LOUIS MEDICAL AND SURGICAL DISPENSARY

CORNER SECOND AND YAMHILL STREETS, PORTLAND, OREGON.

LARGE RETURNS FROM COWS

TILLAMOOK DAIRYMEN MAKE BIG PROFITS.

Reports From Creamery Show Milk Producers Net Owners Over \$100 Each in Year.

TILLAMOOK, Or., Feb. 9.—(Special.)—Another co-operative cheese factory to make its annual report is that of the Red Clover Creamery Company, which makes a good showing and is exceedingly flattering to the dairymen who take their milk to this cheese factory. Following are some of the interesting figures in the report: Amount of milk received for the year, 1,720,948 pounds; amount of butter fat contained in milk, 68,577.7 pounds; average test, 3.948 per cent; amount of cheese manufactured, 195,000 pounds; returns received, \$7,922.06; average price received, 14 1/2 cents per pound f. o. b. Tillamook; average yield, 11.21 pounds per 100 pounds of milk.

The price paid the patrons for butter fat kept at a high price during the whole year, as the following figures will show: January, 39.5 cents; February, 28.7 cents; March, 26 cents; April, 37.55 cents; May, 24.7 cents; June, 24.95 cents; July, 24.08 cents; August, 26.78 cents; September, 26.08 cents; October, 26.08 cents; November, 26.5 cents; December, 23.33 cents.

As the numerous cheese factories of Tillamook County are making their annual returns, the dairymen are now in a position to know the results of their year's work, who are comparing figures with previous years, and as a result of this a large number of dairymen have made over \$100 per cow for last year, and considering that they raise all their own feed on their farms, and do not have to buy mill feed, the profit in dairying last year was exceedingly large. They are receiving their pay every month. As an illustration of this, W. B. Alderman has made \$238.88 from 21 cows, or \$11.37 per cow. He takes his milk to the Maple Leaf Creamery Association, and it is made into cheese. The actual figures, taken from the company's books, shows:

Month	Pounds of Milk	Butter Fat	Amount Received
January	1,871	74.71	\$25.68
February	1,871	74.71	25.68
March	1,871	74.71	25.68
April	1,871	74.71	25.68
May	1,871	74.71	25.68
June	1,871	74.71	25.68
July	1,871	74.71	25.68
August	1,871	74.71	25.68
September	1,871	74.71	25.68
October	1,871	74.71	25.68
November	1,871	74.71	25.68
December	1,871	74.71	25.68
Total	171,907	6,950.87	\$2,383.96

Average, 6.186 pounds of milk per cow. Average, 331 pounds of butter fat per cow. Average returns, \$112.81 per cow. Average test, 4.943. Average price for butter fat, 34 1/2 cents. Average \$1.09 per 100 pounds of milk. Total receipts for 21 cows, \$2,383.96.

St. Paul Survey Near Aberdeen.

ABERDEEN, Wash., Feb. 9.—(Special.)—Engineers of the St. Paul road are running lines west of this city. They have been in the timber a week and their presence here has been announced. There is ample proof that they are working on various routes leading to the Grays Harbor country.

MONEY IN BARRELS

See Page 5.

WILLAMETTE RIVER ROUTE

Steamer Pomona for Salem, Independence, Albany and Corvallis, leaves Tuesday, Thursday and Saturday at 6:45 A. M. Oregon City Transportation Co. Office and Dock Foot Taylor Street. Phone: Main 40; A 2231.

TRAVELERS' GUIDE

PORTLAND BY LIGHT & POWER CO. GARY LEVAYE. Ticket Office and Waiting-Room, First and Alder Streets. FOR OREGON CITY—4:00, 6:25, 7:00, 7:55, 8:10, 8:45, 9:15, 10:00, 11:40, 11:45 A. M.; 12:15, 12:50, 1:25, 2:00, 2:35, 3:10, 3:45, 4:20, 4:55, 5:30, 6:05, 6:40, 7:15, 7:50, 8:25, 9:00, 10:00, 11:00, 12:00 P. M. Gresham, Boring, Eagle Creek, Estacada, Cazadero, Fairview and Troutdale—7:40, 8:20, 9:00 A. M.; 1:30, 2:40, 3:44, 7:15 P. M.

FOR YANCOUVER

Ticket office and waiting-room Second and Washington streets. FOR VANCOUVER—8:15, 9:15, 10:00, 11:40, 12:15, 1:00, 1:30, 2:00, 2:10, 2:50, 4:30, 5:10, 5:50, 6:25, 7:00, 7:40, 8:15, 9:25, 10:35, 11:45. On This Month's Every Month the Last Car Leaves at 7:45 P. M. "Daily" except Sunday. "Daily" except Monday.

North Pacific S. S. Co's. Steamship

Koanoko and Geo. W. Elder. Sail for Luluaba, San Francisco and Los Angeles direct every Thursday at 8 P. M. Ticket office 132 Third St., near Alder. Both phones, M. 1314. H. Young, Agent.

CANADIAN PACIFIC

EMPRESS LINE OF THE ATLANTIC. LESS THAN FIFTY DAYS AT SEA. During the summer season, the Empress sail from Quebec to Liverpool, fast and luxurious. Nine hundred miles to sheltered waters of the St. Lawrence River and Gulf of St. Lawrence. This route is the shortest and most direct to Europe and avoids sea sickness. Summer sails, dates and rates now ready. Apply to any Ticket Agent, or P. R. Johnson, Pass. Agt., 142 Third St., Portland, Oregon.

San Francisco & Portland Steamship Co.

Announce First Voyage of the S. S. ROSE CITY. From Portland (Almsworth Dock) 4 P. M. February 14. JAMES H. DEWSON, AGENT. Phone Main 258. Almsworth Dock.

COOS BAY LINE

The steamer BREAKWATER leaves Portland every Wednesday at 8 P. M. from Oakland dock for North Bend, Madras and other points. Freight received till 4 P. M. on day of sailing. Passenger fare, first class \$10; second class \$7, including berth and meals. Inquire city ticket office, Third and Washington streets, or Oak-street dock.

Irrigate Land From Wells.

NORTH YAKIMA, Wash., Feb. 9.—(Special.)—A tract of 2000 acres of land in the vicinity of Priest Rapids, east of this city, is being reclaimed in a body by a system of wells which will furnish water for irrigation purposes. The average depth of the wells is 45 feet. Each 40-acre tract will have a well for its own supply water. A strong current that of a river is found in each well. The supply is apparently inexhaustible. Of the tract being thus reclaimed, 1600 acres have already been cleared and much of it plowed. It is in what is known as the sweet potato belt of the Yakima region. A large acreage of this vegetable will be planted this year.

Large Mortgage Recorded.

GRANTS PASS, Or., Feb. 9.—(Special.)—One of the largest instruments ever recorded in Josephine County reached the records of the Clerk's office for recording from the Rogie River Electric Company in a mortgage to the Guaranty Trust Company of New York. It covers 82 pages of printed matter in the form of a book, and cost \$30 to have it filed. The obligation represents a value of \$300,000, as security for a bond issue for the Rogie River Electric Company, which has large holdings in this and Jackson Counties. This corporation is the outgrowth of the Condon Water & Power Company and several other minor enterprises. The mortgage will also have to be recorded in Jackson County.

Are You Sick?

Much sickness is due to a weak nervous system. Yours may be. If it is, you cannot get well until you restore nerve strength. Your nervous system is nature's power house; the organs of your body get their power from it. If the power is not there, the action of the organs is weak, and disease (sickness) follows. Dr. Miles' Nervine cures the sick because it soothes the irritated and tired nerves and gives the system a chance to recuperate. Try it, and see if you do not quickly feel its beneficial effect.

"I was given up to die by a leading doctor. Got one of Dr. Miles' Nervine in my case. From the first dose I took I got better. I am better now than I have been for years, and am able to do my work. That's what Dr. Miles' Nervine has done for me, and I am glad to recommend it to you."

JOHN JAMES, Rhyerston, Neb. Your druggist sells Dr. Miles' Nervine, and if he does not, send for a return price of first bottle (only) if it fails to benefit you.

Miles Medical Co., Elkhart, Ind.

TRAVELERS' GUIDE

PORTLAND BY LIGHT & POWER CO. GARY LEVAYE. Ticket Office and Waiting-Room, First and Alder Streets. FOR OREGON CITY—4:00, 6:25, 7:00, 7:55, 8:10, 8:45, 9:15, 10:00, 11:40, 11:45 A. M.; 12:15, 12:50, 1:25, 2:00, 2:35, 3:10, 3:45, 4:20, 4:55, 5:30, 6:05, 6:40, 7:15, 7:50, 8:25, 9:00, 10:00, 11:00, 12:00 P. M. Gresham, Boring, Eagle Creek, Estacada, Cazadero, Fairview and Troutdale—7:40, 8:20, 9:00 A. M.; 1:30, 2:40, 3:44, 7:15 P. M.

FOR YANCOUVER

Ticket office and waiting-room Second and Washington streets. FOR VANCOUVER—8:15, 9:15, 10:00, 11:40, 12:15, 1:00, 1:30, 2:00, 2:10, 2:50, 4:30, 5:10, 5:50, 6:25, 7:00, 7:40, 8:15, 9:25, 10:35, 11:45. On This Month's Every Month the Last Car Leaves at 7:45 P. M. "Daily" except Sunday. "Daily" except Monday.

North Pacific S. S. Co's. Steamship

Koanoko and Geo. W. Elder. Sail for Luluaba, San Francisco and Los Angeles direct every Thursday at 8 P. M. Ticket office 132 Third St., near Alder. Both phones, M. 1314. H. Young, Agent.

CANADIAN PACIFIC

EMPRESS LINE OF THE ATLANTIC. LESS THAN FIFTY DAYS AT SEA. During the summer season, the Empress sail from Quebec to Liverpool, fast and luxurious. Nine hundred miles to sheltered waters of the St. Lawrence River and Gulf of St. Lawrence. This route is the shortest and most direct to Europe and avoids sea sickness. Summer sails, dates and rates now ready. Apply to any Ticket Agent, or P. R. Johnson, Pass. Agt., 142 Third St., Portland, Oregon.

San Francisco & Portland Steamship Co.

Announce First Voyage of the S. S. ROSE CITY. From Portland (Almsworth Dock) 4 P. M. February 14. JAMES H. DEWSON, AGENT. Phone Main 258. Almsworth Dock.

COOS BAY LINE

The steamer BREAKWATER leaves Portland every Wednesday at 8 P. M. from Oakland dock for North Bend, Madras and other points. Freight received till 4 P. M. on day of sailing. Passenger fare, first class \$10; second class \$7, including berth and meals. Inquire city ticket office, Third and Washington streets, or Oak-street dock.

I Cure Men for \$1.00

MY FEE IN ANY UNCOMPLICATED CASE.

YOU CAN PAY WHEN CURED

MEN'S DISEASES ONLY

What better proof or more sincere assurance can I offer than that I am willing to wait for my fee until I effect a cure? Could I afford to make such an offer if I was not absolutely certain of curing every case I take? My practice has demonstrated that no ailment peculiar to men is incurable. Failure to cure is usually due to lack of knowledge and improper treatment. You may consult me free of charge and learn your exact condition. I will not urge my service unless I am sure I can cure you.

"WEAKNESS"

I am the only physician employing scientific measures in treating functional weakness and permanently curing every case. I accept no incurable cases at all, and if I treat you, you can feel assured of a radical cure, and I am always willing to wait for my fee until you are effectuated.

VARICOCELE, SPERMATORRHEA, LOST VIGOR, ORGANIC WEAKNESS, CONTRACTED DISORDERS, STRICTURES, SPECIFIC BLOOD POISON and