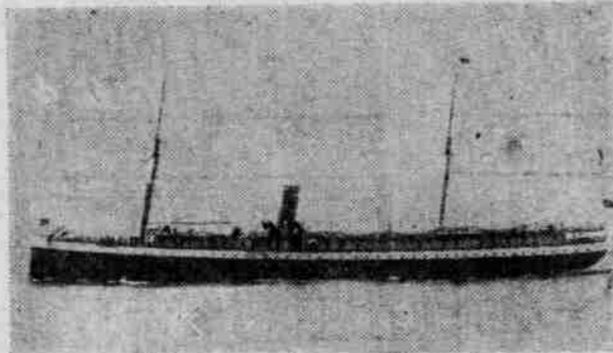


**San Francisco & Portland Steamship Company**

**COLUMBIA RIVER  
SCENIC ROUTE**

A  
Delightful  
Ocean and  
River  
Voyage



Affording a  
Grand Pano-  
ramic View  
of the Lower  
Columbia  
River

THE NEW AND COMMODIOUS STEAMER **"ROSE CITY"** Will be Placed on the Run During January  
3500 TONS

The "Rose City" is 321 feet long, 43 feet wide, 18 feet 6 inches deep. She will have commodious quarters for 200 saloon passengers and nearly as many second-class.

Many thousands of dollars have been expended in furnishing and fitting the vessel that she may be the finest Coastwise passenger steamer on the Pacific Ocean. Her engines, steam steering gear, electric lighting plant and other machinery, is of the latest and most improved pattern; in fact, no effort has been spared to make the steamship "Rose City" a model in every detail, and she will be by far the largest, most elegantly appointed and fastest steamer entering the harbor. She will also be equipped with wireless telegraphy, which will insure the utmost safety in traveling and relieve the anxiety of those interested in the welfare of passengers and crew, as the ship may be communicated with at any time while en route.

Her spacious and well-furnished saloons, staterooms, bathrooms and toilet-rooms are models of completeness. The cuisine is in keeping with the equipment and reputation of the steamship. The officers aim to be obliging and courteous, and spare no pains in making their passengers comfortable and the trip pleasant.

The scenery includes the picturesque beauties of the lower Columbia River through the famous salmon-fishing grounds, past Astoria, and out the mouth between Port Canby and North Head on the right and Fort Stevens and the great Government jetty on the left. The forest-covered slopes of the river banks and of the Coast Mountains form a pretty and striking background to the point where water and shore meet. From the Golden Gate to the Willamette the trip has many interesting features.

Steamers Leave Portland and San Francisco  
Every Six Days, Calling at Astoria en Route

G. L. BLAIR,  
General Freight Agent, San Francisco, Cal.

G. W. ROBERTS,  
Agent, Astoria, Or.

A. G. D. KERRELL,  
General Passenger Agent, San Francisco, Cal.

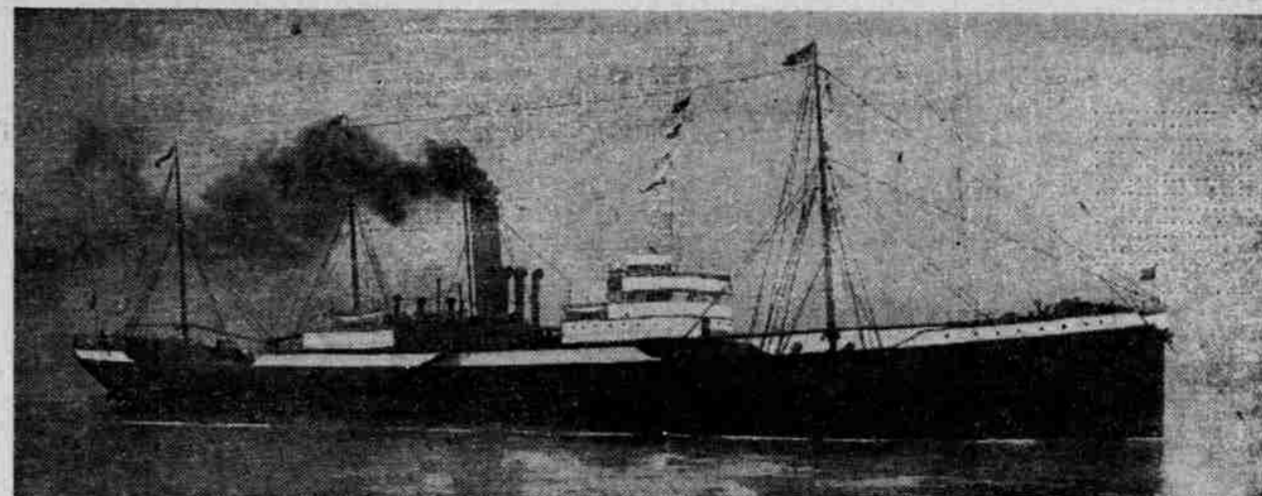
J. H. DEWSON, Agent  
Portland, Oregon

**Portland & Asiatic Steamship Company**

OPERATING STEAMERS

**"Alesia" "Arabia" "Nicomedia"  
"Numantia"**

Between Portland and the Orient



SS. "NUMANTIA"

Steamers of this line will leave Portland, Oregon, and Hongkong every three weeks, carrying freight only, calling at Yokohama, Kobe and Moji en route, taking freight for all the principal Oriental ports.

For Information as to Freight Rates Apply to

J. H. DEWSON, Agent.....Portland, Oregon  
W. W. CAMPBELL, Agent.....Kobe, Japan  
WURIU SHOKWAI, Agents.....Moji, Japan

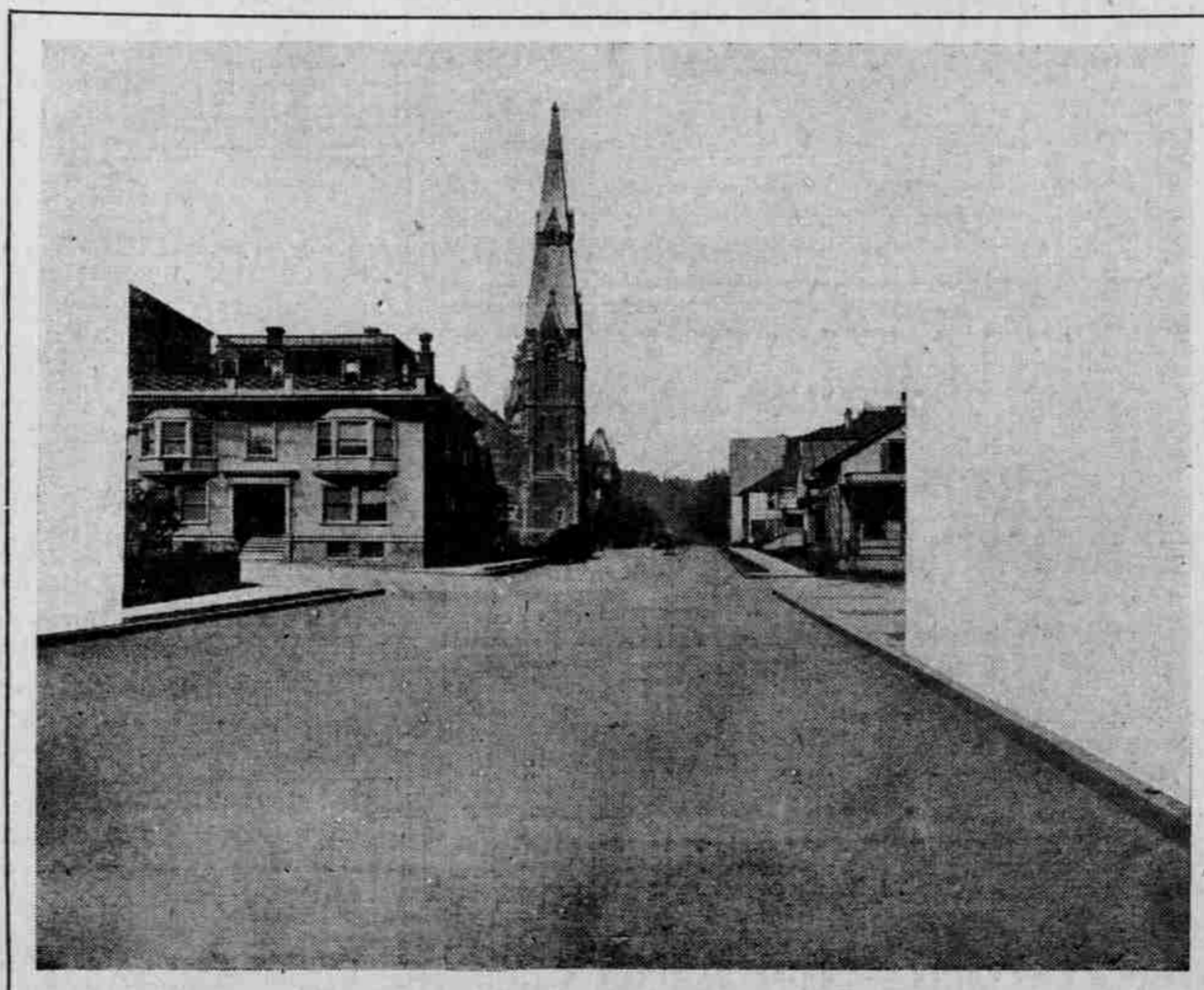
B. C. HOWARD, Agent.....Yokohama, Japan  
HOLME, RINGER & CO.....Nagasaki, Japan  
S. SILVERSTONE, Agent.....Hongkong

General Offices  
Third Floor, Flood Building  
San Francisco, Cal.

**BARBER ASPHALT PAVING CO.**

404 WORCESTER BUILDING

Alder  
Street  
From  
Sixth  
to  
Lownsdale



Asphalt  
Pavement  
Laid  
in 1903  
In Perfect  
Condition at  
Present Time



**Asphalt Pavements for Streets, Floors and Driveways**  
Asphalt For Roofing, Dipping, Etc.

PHONES: Main 1504; East 420; A 2783

OSKAR HUBER, Manager