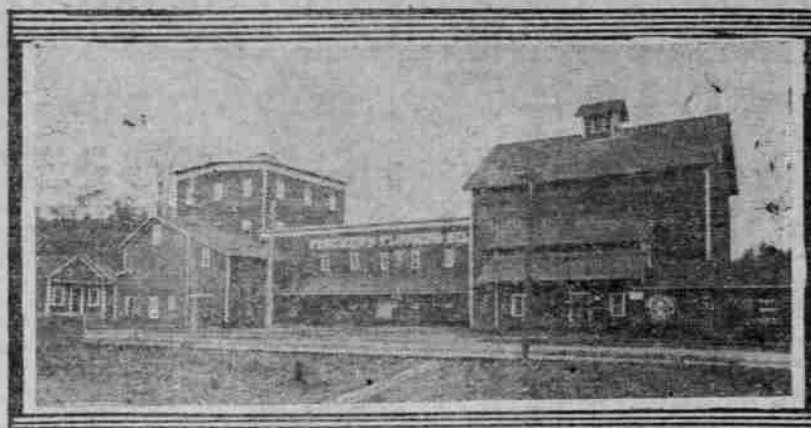


# PHASES OF INDUSTRIAL GROWTH IN OREGON

### PUBLIC AND INDUSTRIAL BUILDINGS AT SILVERTON



FLOURING MILL AT SILVERTON



CHRISTIAN CHURCH AT SILVERTON



A SILVERTON HOTEL



FRAMING LUMBER MILL AT SILVERTON

## WATER IN PLENTY FOR BAKER CITY

### Irrigation Project Will Give Arid Soil High Degree of Fertility.

### THROWN OPEN TO PUBLIC

Private Reclamation Work, When Complete, Will Cost \$150,000 and Serve 10,000 Acres—Main Canal 12 Miles in Length.

BAKER CITY, May 5.—(Special.)—The placing upon the market of a large tract of land lying northeast of this city and owned by the Baker Irrigation Company, marks one of the greatest steps in the progress of the metropolis of Eastern Oregon. The opening of this body of land to purchasers is an event that has been awaited with interest by a large number of home-seekers of Baker City and vicinity, who have been watching the progress of the irrigation ditch since work commenced on it about 18 months ago.

The canal heads in the Powder River about eight miles south of Baker City, and after following the tortuous contour of the valley and the billside for a distance of 12 miles, reaches the irrigated site, one mile east of this city. Along a good portion of the mountain side above South Baker the canal has, at great expense, been cut into the solid rock, thus obviating the use of the cheaper but temporary wooden flume. The company has not spared any expense to provide against any accident that would deprive it of the water at the critical period of irrigation work, and at one point near Sutton Creek a long line of flume has been dispensed with by making an immense fill of earth.

### Instal Big Siphon.

The problem of crossing Sutton Creek and the O. R. & N. right of way was successfully solved by the use of what is probably the largest inverted siphon in the Northwest. It is made of double riveted No. 10 steel pipe, 48 inches in diameter, through which the water drops 20 feet, passing over the street crossing and the main line of the O. R. & N. Railroad, about a mile southeast of Baker City.

Another inconvenient and expensive piece of work was caused the company by not being allowed to come within the corporate limits of Baker City. This necessitated the construction of a tunnel about two blocks long through the Reservoir Hill. This tunnel is 48 feet and is cut out of solid rock a great part of the way. After passing through the tunnel, the canal continues along the mountain side and around the hills until it reaches the reservoir site one mile east of this city.

The main canal, from its head on Powder River to the reservoir, is 12 miles long, while the two main laterals, one of which is taken from the main canal, and the other from the reservoir, will add as much more to the length of the lines that have been built by the company.

### Experiment With Potatoes.

Potatoes are said to grow most bountifully on this soil. It is conservatively estimated that this land will produce at the lowest 250 bushels of potatoes to the acre, and that with such a crop a man could buy a five-acre tract, raise potatoes, and besides paying for the land make a good interest on his money. It is the expectation of the company that potatoes will yield about 500 bushels to the acre, and they will be of the finest size and quality.

### J. A. Smith Promotes Work.

The pushing of the big project to a successful completion is due to the energy and ability of J. A. Smith, of this city. In the fall of 1905 work was begun on the construction of the ditch, which is now 17 1/2 miles. Since that time the work has been pushed as rapidly as the weather and local conditions would permit. The company now has at work in the construction of the reservoir a gang of nearly 80 men, whose payroll will average about \$50 per week. The financing of this project by private interests has been successfully handled by Mr. Smith, and \$150,000, which will be the total cost of the system when completed, has been raised and made available. This project has meant much to Baker City because of the fact that practically all of the money spent for labor has been paid to local workmen.

### WANT NEW ROAD AND FERRY

#### Springfield Commercial Club Active in Securing Improvements.

SPRINGFIELD, Or., May 5.—(Special.)—A committee recently appointed by the Commercial Club of this city, for the purpose of interviewing the farmers in the Pleasant Hill Valley, in regard to establishing a new road and putting in a ferry boat three miles below Jasper, has been active. The committee consists of C. H. Fryer, Paul Bertelheim and H. M. Stewart. These three, accompanied by Editor Beecher, drove over the proposed route and reported that by building a road, crossing the river at a point just below Burt Matthews' farm, the distance to Springfield can be shortened to about four miles, whereas it is now necessary for the farmers in that locality to travel eight miles.

### ANXIOUS FOR RAILROAD LINE

#### Laidlaw Citizens Ready to Raise \$100,000 Bonus.

LAILDLAW, Or., May 5.—(Special.)—At an enthusiastic meeting of the Laidlaw Development League and citizens of the community, the local railroad question was discussed. It has developed that the obstructions to the building of the Oregon Trunk Line road have been removed, and that the state, citizens here and the action of the legislature with delight, and will do all in their power to further the building of this line to Laidlaw.

### Place 1000 Acres on Sale.

The company, which owns all the land covered by this ditch, has placed on the market only 1000 acres, which is being sold for \$50 to \$100 per acre, according to the size of the tract and its location. This tract has been divided up into smaller tracts of 3, 10, 20, 40 and 50 acres. The company was not very desirous of selling the land, but because of the demand placed this tract on the market. This immense body of land is the richest and most fertile in Baker Valley, but because of the lack of moisture has pro-

duced nothing but sage brush and grass. The company is this year placing under cultivation 400 acres of ground which it has sowed to wheat, oats and barley. The yield of grain from this rich soil is from 50 to 100 bushels per acre. It is estimated that one acre of this ground would produce six tons of alfalfa yearly. The company is preparing to carry on its work on a much larger scale next year and is now plowing up 1500 acres, which will be seeded next Spring.

The company is planning to carry on extensive experiments to determine the quality of grain best suited to this climate and soil. Many different varieties of wheat, oats, barley and other small grains will be planted and the one giving the best returns will be generally produced. The sugar beet industry will also be tried this year. A man with experience in raising sugar beets has been engaged to prepare the ground and raise new crops, which will be sent to a nearby factory and there tested for quality. If the result is satisfactory, beets will be raised on a large scale and a sugar beet factory established in Baker City.

Employe. It lies nestled in the Valley of the Deschutes, with thousands of acres of irrigated land on either side, and the timber belt within five miles of the limits of the town. The old survey of the Corvallis & Eastern crosses the river at this point, and with the building of it and the trunk line Laidlaw will be much benefited. The people are enthusiastic and enterprising, and all that is lacking for the rapid development and building of a city is the assurance of the construction of transportation lines within a reasonable time.

### ALBANY TO HAVE BIG HOTEL

#### E. H. Rhodes Plans to Erect Fine Hostelry.

ALBANY, Or., May 5.—(Special.)—Albany may have another hotel and one which will be a more modern hostelry than the city now has. E. H. Rhodes is contemplating the erection of such a structure on property at the southwest corner of First and Ferry streets, a prominent business corner. Excavating is now in progress for a business block Mr. Rhodes planned to construct, but the owner is now considering a change in plans and expects to rear a structure for hotel purposes. In the event that this action is determined upon, a thoroughly modern and suitable building will be the result.

### OUT FOR CLARK COUNTY

#### VANCOUVER CLUB BEGINS CAMPAIGN OF EXPLOITATION.

Appoints Committee to Raise Money by Subscription for Advertising to Reach New Industries.

VANCOUVER, Wash., May 5.—(Special.)—The recently established publicity department of the Vancouver Columbia Club has taken active operation during the past few days toward the systematic campaign of advertising and advancement of the interests of the territory in the vicinity of Vancouver and especially in Clark County. The committee in charge of this work is composed of E. G. Crawford, ex-Mayor of Vancouver; J. H. Elwell, a prominent real estate dealer and E. E. Beard, editor and publisher of the Vancouver Columbian. They will begin a canvass among the commercial men of this community to secure funds for carrying on this new feature of the club's work. The Columbia Club itself has set aside a special fund for the aid of this department, and has appointed a special secretary to take charge of the branch.

### Heavy Timber at Hand.

Silverton is bounded on the south and east by an almost inexhaustible supply of timber, the quality of which is unsurpassed in the valley, and thousands of acres of fir are as yet untouched by ax or saw. In view of this fact several small mills have been erected in the vicinity of Silverton and the product of the forest is being placed on the market. The Fischer Flouring Mills Company has within the past year rebuilt its property and installed the latest system for manufacturing flour, and today is second to none in the state. The Silverton Hop-growers' Association, which was organized a few weeks ago, is erecting a large warehouse near the depot. A new creamery has just been finished, and no less than ten new dwellings are now under

### SHOWS NEW GROWTH

#### Silverton to Erect 100 Buildings This Year.

### MANY INDUSTRIES ADDED

#### Portland and The Dailies Capitalists Lease 3000 Acres.

MCMINNVILLE, May 5.—A large company of capitalists of Portland and The Dailies have just signed a lease for 3000 acres of land in the North Yamhill gap. The lease is for 50 years, and operations are to be begun at once to bore for oil. The contract reads for "oil, minerals, and coal," and the owners get 10 per cent of the net profit of whatever is found. If oil is not struck in 18 months the lease becomes null and void, and reverts to the owners of the land.

### TO BORE FOR OIL IN YAMHILL

#### Portland and The Dailies Capitalists Lease 3000 Acres.

### Large Church is Dedicated and a \$15,000 High School to be Constructed—Timber Attracts Lumber Manufacturers.

SILVERTON, Or., May 5.—(Special.)—From the first flush of green on the fields and foliage this Spring until Autumn has browned the pastures and scattered the withered leaves, great activity will be experienced in all branches of industry in Silverton, and if at the close of the year the little city has increased its population by one-half it will surprise those who are instrumental in the present progressive movement. Probably no city in the Willamette Valley the size of Silverton will experience a greater improvement during the Summer of 1907 than this. If all plans materialize nearly 100 new buildings will be erected before the close of the season, and several which were started early are being completed today.

### ROSEBURG CAPITALISTS SUBSCRIBE MONEY FOR LINE.

#### Citizens of Marshfield and North Bend Interested in Project and Will Advance Funds.

MARSHFIELD, Or., May 5.—(Special.)—Deep interest is being manifested in Coos Bay and the intervening country between Roseburg and this place over a proposed electric road to connect the two places. It is thought the project will be carried through. The Roseburg people have taken the initiative. Prominent men of that place have volunteered \$50,000 worth of stock toward the building of the line if a proportionate amount is subscribed in the cities of Marshfield and North Bend.

### LOOKS ASKANCE AT RAILROAD

#### Coos Bay Citizens Suspicious of Southern Pacific.

MARSHFIELD, Or., May 5.—(Special.)—J. N. Nier, representing the Southern Pacific Railroad Company, has arrived on Coos Bay with the evident intention of securing an opening into Marshfield and North Bend for the line of that road which is now building in from Drain by way of Gardiner, on the Umpqua River. Nier makes the assertion that the company will pass by both cities

### Milwaukee Country Club.

Eastern and California races. Take Sellwood or Oregon City car, starting from First and Alder streets.

### Shows New Growth

#### Silverton to Erect 100 Buildings This Year.

### MANY INDUSTRIES ADDED

#### Portland and The Dailies Capitalists Lease 3000 Acres.

### TO BORE FOR OIL IN YAMHILL

#### Portland and The Dailies Capitalists Lease 3000 Acres.

### Large Church is Dedicated and a \$15,000 High School to be Constructed—Timber Attracts Lumber Manufacturers.

SILVERTON, Or., May 5.—(Special.)—From the first flush of green on the fields and foliage this Spring until Autumn has browned the pastures and scattered the withered leaves, great activity will be experienced in all branches of industry in Silverton, and if at the close of the year the little city has increased its population by one-half it will surprise those who are instrumental in the present progressive movement.

### ROSEBURG CAPITALISTS SUBSCRIBE MONEY FOR LINE.

#### Citizens of Marshfield and North Bend Interested in Project and Will Advance Funds.

MARSHFIELD, Or., May 5.—(Special.)—Deep interest is being manifested in Coos Bay and the intervening country between Roseburg and this place over a proposed electric road to connect the two places. It is thought the project will be carried through.

### LOOKS ASKANCE AT RAILROAD

#### Coos Bay Citizens Suspicious of Southern Pacific.

MARSHFIELD, Or., May 5.—(Special.)—J. N. Nier, representing the Southern Pacific Railroad Company, has arrived on Coos Bay with the evident intention of securing an opening into Marshfield and North Bend for the line of that road which is now building in from Drain by way of Gardiner, on the Umpqua River. Nier makes the assertion that the company will pass by both cities

### Milwaukee Country Club.

Eastern and California races. Take Sellwood or Oregon City car, starting from First and Alder streets.

## Breaking Ground For Independent

### New Phone Co. Opens Trenches Along Harney Street for Conduit From Central Building.

Closely following the announcement of the purchase of its sites for the new central telephone exchange and the north side branch exchange, the Independent Telephone Co. has begun active construction work for the installation of the new automatic telephone plant. A large force of men went to work yesterday opening up Harney street from Nineteenth east for the ditch in which to lay the initial line of conduits leading from the central building into the business district. The trench, being opened on the north side of the street near the sidewalk. A novel feature connected with the construction work is the marking of the open trench with a row of red pennants, each bearing in white letters the words "Independent Telephone Co." It is not only a clever advertisement calling attention to the progress of work in building the new plant, but it also serves to inform curious spectators and save the asking and answering of innumerable questions.—World-Herald, Omaha, Neb.

### LOUIS J. WILDE HOME BONDS PORTLAND, OR.

on the bay if the proper concessions are made. He says the Southern Pacific believes it should be offered water frontage in both places. There is a strong feeling against the road on the bay and the people are unanimously opposed to granting it any more along the water, contending that it is the road's intention to bottle up the cities' wharves against possible future competitors.

### STRAIGHTEN OUT THE CURVES

#### Spokane Falls & Northern Working to Lessen Grades.

COLVILLE, Wash., May 5.—(Special.)—Engineer Butler, having in charge the work of reurvey of the line of the Spokane Falls & Northern Railway, has been here for the past two weeks, during which time he has run a number of preliminary lines with a view to straightening out the big curve in the line running into Colville, and at the same time lessening the grade down the valley at this point. According to the estimates made by Mr. Butler, when the new line is constructed, it will be necessary to move the Colville station house from a half to three-quarters of a mile farther away from town to the northwest. On the new cutoff at this place it is estimated that in a distance of five miles, nearly three-quarters of a mile in distance will be saved.

### New Brewery to Start.

COLVILLE, Wash., May 5.—(Special.)—The Colville Brewing & Bottling Company, limited, was organized here this week by A. W. Goodenough, recently from Nelson, B. C., and B. F. Hammond, A. E. Neatch, Sigmund Dilheimer and P. A. Dean, and organizers. The capital stock of the new corporation is \$25,000.

### Getting Ready for Electric Line.

SPRINGFIELD, Or., May 5.—(Special.)—The large dynamo that the Willamette Valley Company has been expected to arrive, and will be put in commission

### TRAVELERS' GUIDE.

## Alaska 1907 EXCURSIONS

5 TRIPS  
S. S. Spokane, June 14, 25; July 12, 26; Aug. 9, Queen, July 16.  
NOME ROUTE.  
S. S. Senator, June 1  
S. S. President, June 4  
S. E. ALASKA ROUTE.  
Skagway, Sitka, Juneau and way ports. Sailing 9 P. M.  
H. S. S. Co.'s Humboldt, May 2, 12, 22 Cottage City, via Sitka, May 6, 16, 21 City of Seattle, May 8, 13, 23  
SAN FRANCISCO ROUTE.  
Sailing 9 A. M. From Seattle.  
City of Puebla, May 5, 20  
Senator, May 19, 25  
Umatilla, May 15, 20  
City Office, 240 Washington St.

### STR. CHAS. R. SPENCER

Washington-street Dock.  
Daily, except Sunday, for The Dalles and way landings, at 7 A. M., returning 10 P. M. Fast time, best service.  
Phones: Main, 2184; Home, A. 11, 84.

### Columbia River Scenery

REGULATOR LINE STEAMERS.  
Daily service between Portland and The Dalles, except Sunday, leaving Portland at 7 A. M., arriving about 5 P. M., carrying freight and passengers. Special accommodations for outfit and livestock.  
Dock foot of Alder st., Portland; foot of Court st., The Dalles. Phone Main 914, Portland.

### North Pacific S. S. Co's ROANOKE

Will sail for Eureka, San Francisco and Los Angeles Direct.  
THURSDAY, MAY 9, AT 8 P. M.  
Ticket Office 132 Third, near Alder. Phone M. 1314 and A 1314.  
H. H. YOUNG, Agent.

### CANADIAN PACIFIC

Empress Line of the Atlantic.  
Our express steamers, "EMPEROR OF BRITAIN" and "Empress of Ireland" (14,000 tons) will sail from Quebec to Liverpool in six days; two days on the majestic St. Lawrence and only four days at sea. They possess every known device to insure safety, speed, comfort and luxury.  
J. H. JOHNSON, Pass. Agt., 142 Third St., Portland, Or.

### Ho! For Astoria

FAST STR. TELEGRAPH  
Round trips daily (except Thursdays) 7 A. M. Landing, Alder-Street Dock. Phone Main 565.

### S. S. "COLUMBIA"

The Queen of the Pacific.  
Sails for San Francisco Direct at 9 A. M. May 6 from Astoria dock (end of 3d st.). Direct passenger sailings every 5 days.  
San Francisco & Portland Steamship Co., JAS. H. DEWSON, Agent, Phone Main 208. 248 Washington st.

### WILLAMETTE RIVER ROUTE

For Corvallis, Albany, Independence, Eugene—Steamer "POKONA" leaves 6:45 A. M. Tuesday, Thursday and Saturday.  
For Salem and way landings—Steamer "OREGONA" leaves 9:45 A. M. Monday, Wednesday and Friday.  
WILLAMETTE CITY TRANSPORTATION CO., Foot Taylor Street.

### DeCastro's Sacred Bark Tea

If energy and ambition are lacking  
If the mind is dull, inactive or depressed and trifling, or if the system is irritable and exasperated, then the LIVER is in trouble. The system is clogged with undigested and decaying food.  
Is the best remedy for LIVER troubles. It increases both energy and ambition and induces healthful sleep. It is THE BEST SPRING MEDICINE  
25 Cents at All Drug Stores. Booklet and Sample Free.  
HOYT CHEMICAL CO., PORTLAND, ORE.

### Pabst Eight-Day Maltine

Process gives the full richness of the barley-grain to the beer and makes Pabst Blue Ribbon Beer an appetizing food-drink.