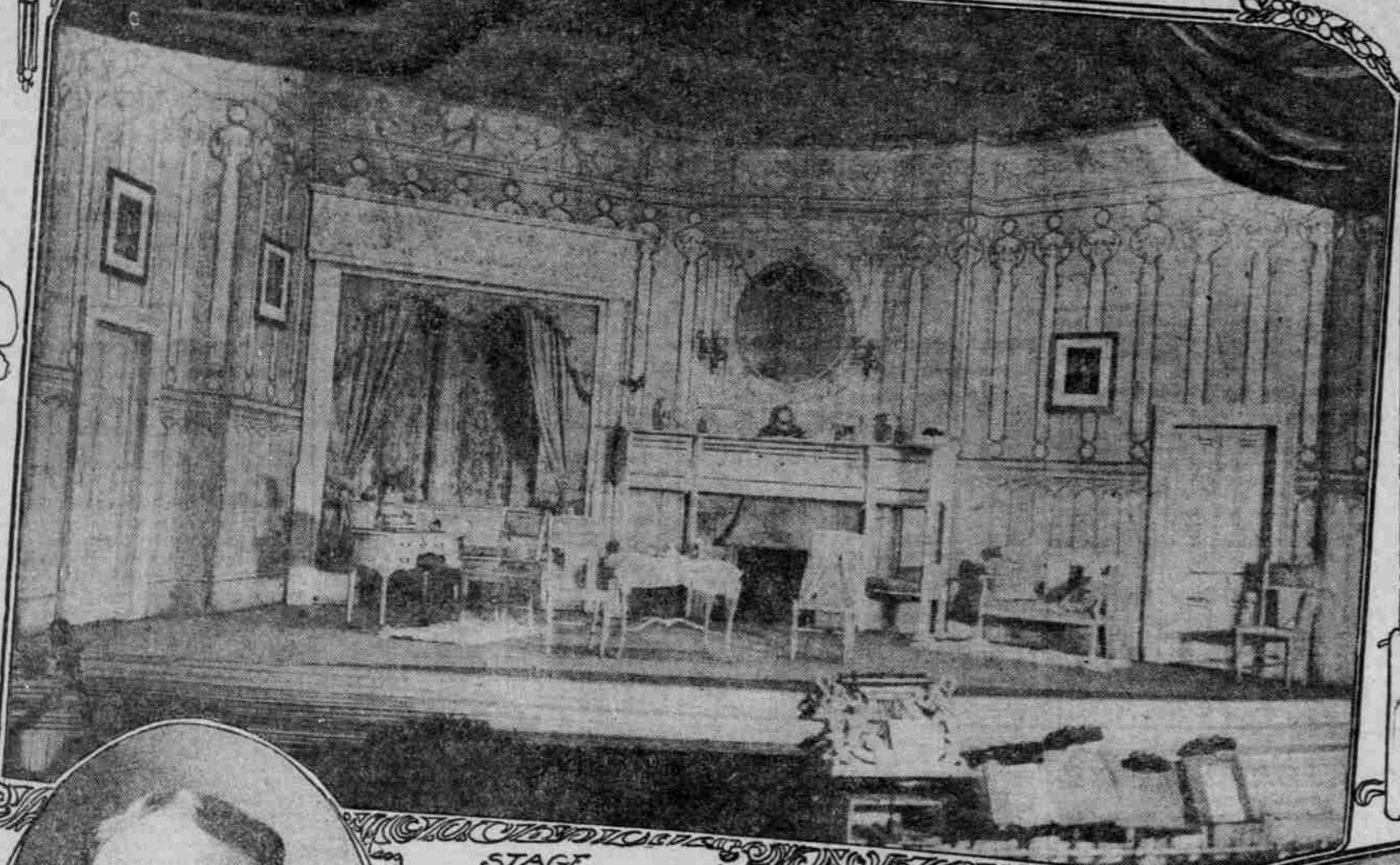
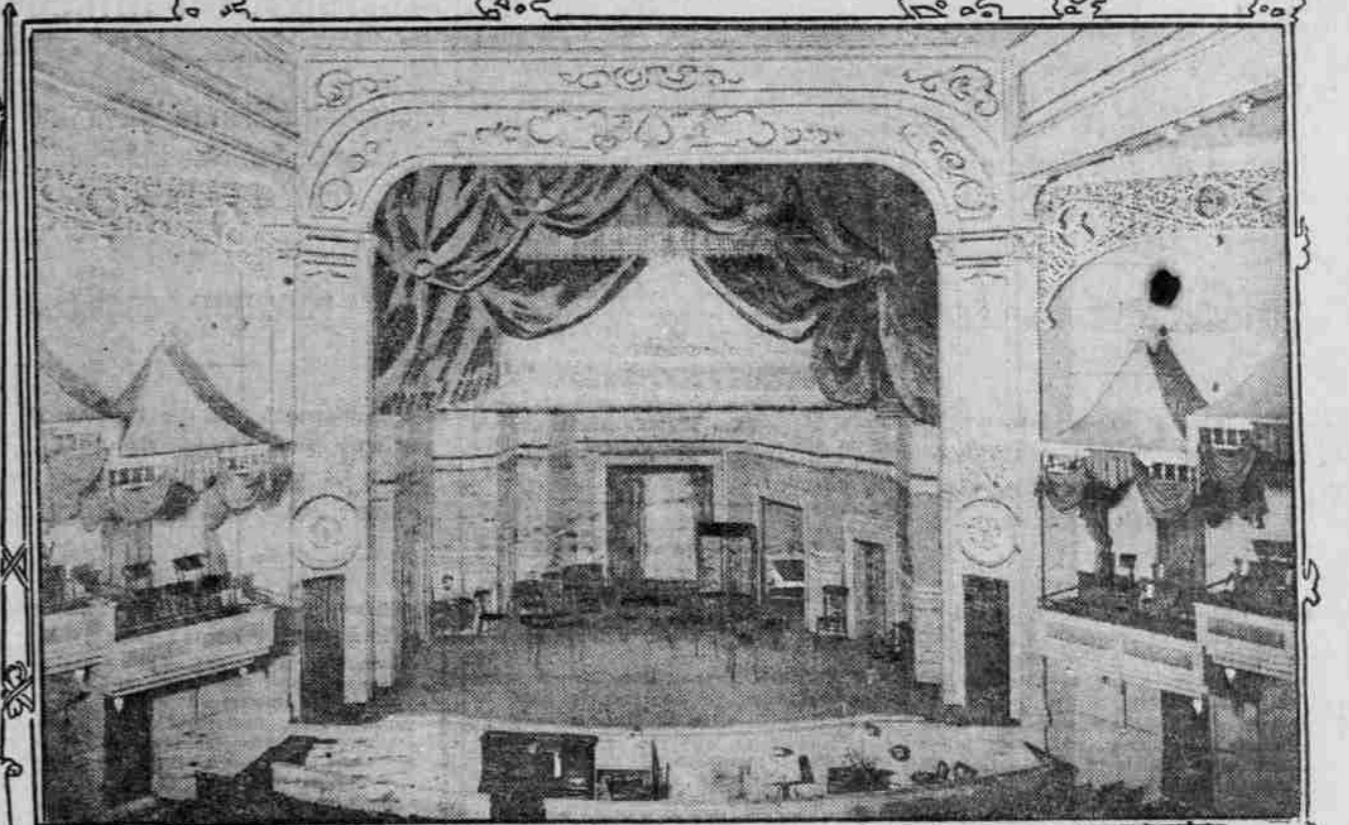


PORTLAND'S PLAYHOUSES AND THEIR PROGRESSIVE MANAGERS



STAGE OF THE HEILIG THEATER



INTERIOR OF THE GRAND THEATER



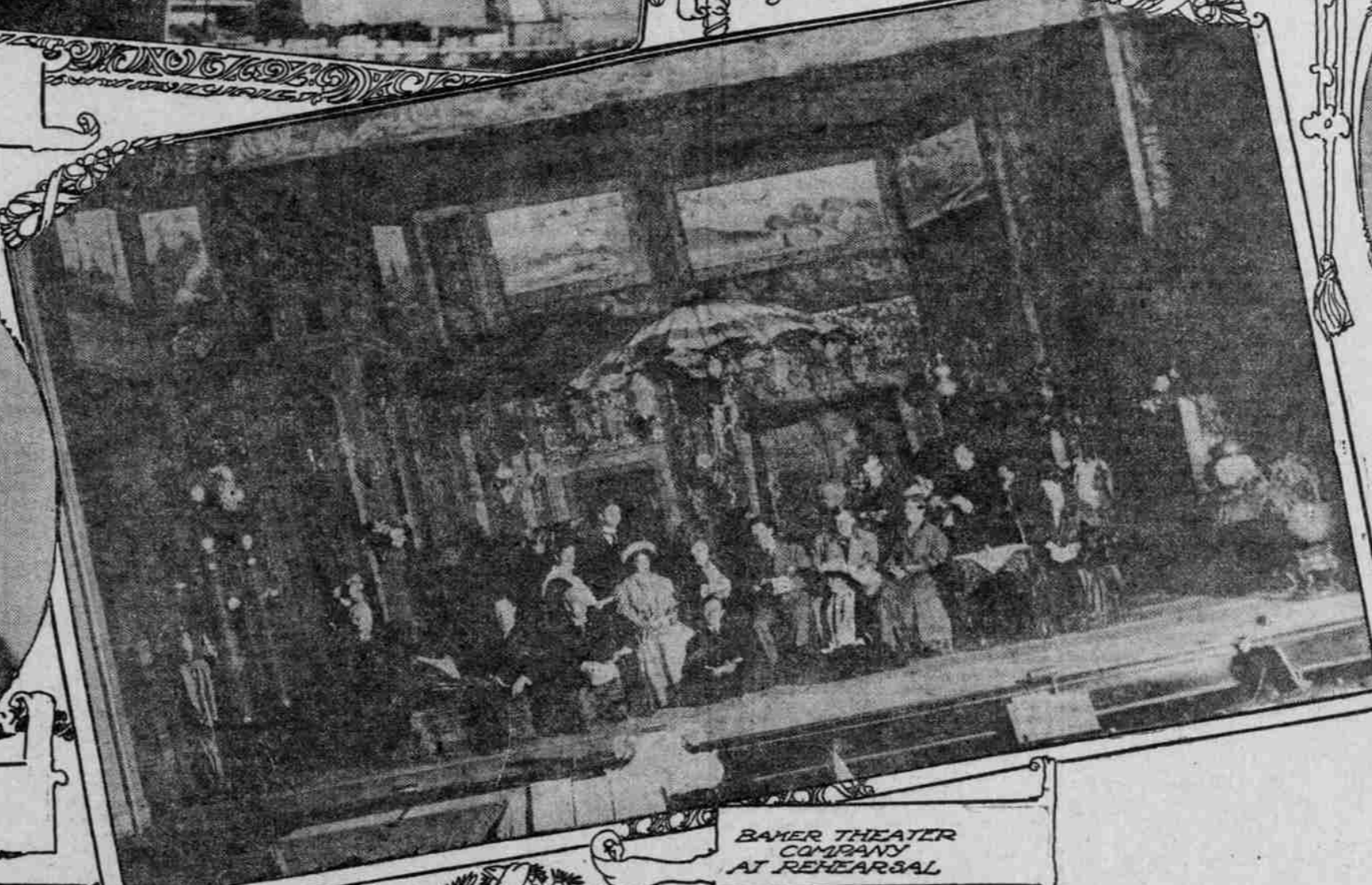
CALVIN HEILIG
PRESIDENT OF THE NORTHWESTERN THEATRICAL ASSOCIATION AND MANAGER OF THE HEILIG THEATER



GEORGE L. BAKER
MANAGER OF THE BAKER AND EMPIRE THEATERS



JAMES H. ERRICKSON
MANAGER OF THE GRAND THEATER



BAKER THEATER COMPANY AT REHEARSAL

PORTLAND is favored with many fine theaters, whose management is in the hands of enterprising and progressive men. The amusement-loving public is liberal in its patronage, and the theatrical managers are quick to give them the attractions that meet the popular fancy.

Heilig a Prominent Figure.
Samuel Calvin Heilig, president of the Northwestern Theatrical Association, is one of the most prominent figures in theatrical affairs on the Pacific Coast. The association controls 63 theaters in the

been centered. From 1895 to 1898 he temporarily abandoned the business, however, to engage in mining in Arizona. He returned to his first love, however, and later successfully conducted theaters of his own in Seattle and British Columbia. He has been here more than two years, and has built up the business of Considine & Sullivan far beyond all expectations. He always keeps faith with his patrons and demands the best that can be secured for their entertainment, and it is by such methods that he has made the names of the Grand and Star synonymous with excellence.

Star's Fine Stock Company.
P. R. Allen, owner of the Allen Stock Company, which makes the Star its permanent home, brought his fine organization to Portland about six months ago. During this time he has been offering a fine line of plays and has made the Star one of the most popular theaters in the city. Mr. Allen has been in the theatrical business about 15 years as an actor and manager, most of the time in the latter capacity. He has brought travelling companies to Portland a number of times, but has only recently cast in his lot permanently with the Rose City. His company, headed by Verna Felton, is a well-balanced and capable one.



EXTERIOR OF THE STAR THEATER



PEARL R. ALLEN
MANAGER ALLEN STOCK CO. STAR THEATER

tensive and elaborate theatrical offices in the country outside of New York. His present company is the best he has ever recruited, and his plans for the future contemplate more ambitious efforts than he has ever made before.
Portland's most successful vaudeville manager is James H. Errickson, who came here two years ago to take charge of the Grand and Star Theaters for Sullivan & Considine. During his management of the Grand he has raised the standard of vaudeville here far above anything we had enjoyed before. During most of his stay here the Star has been devoted to popular

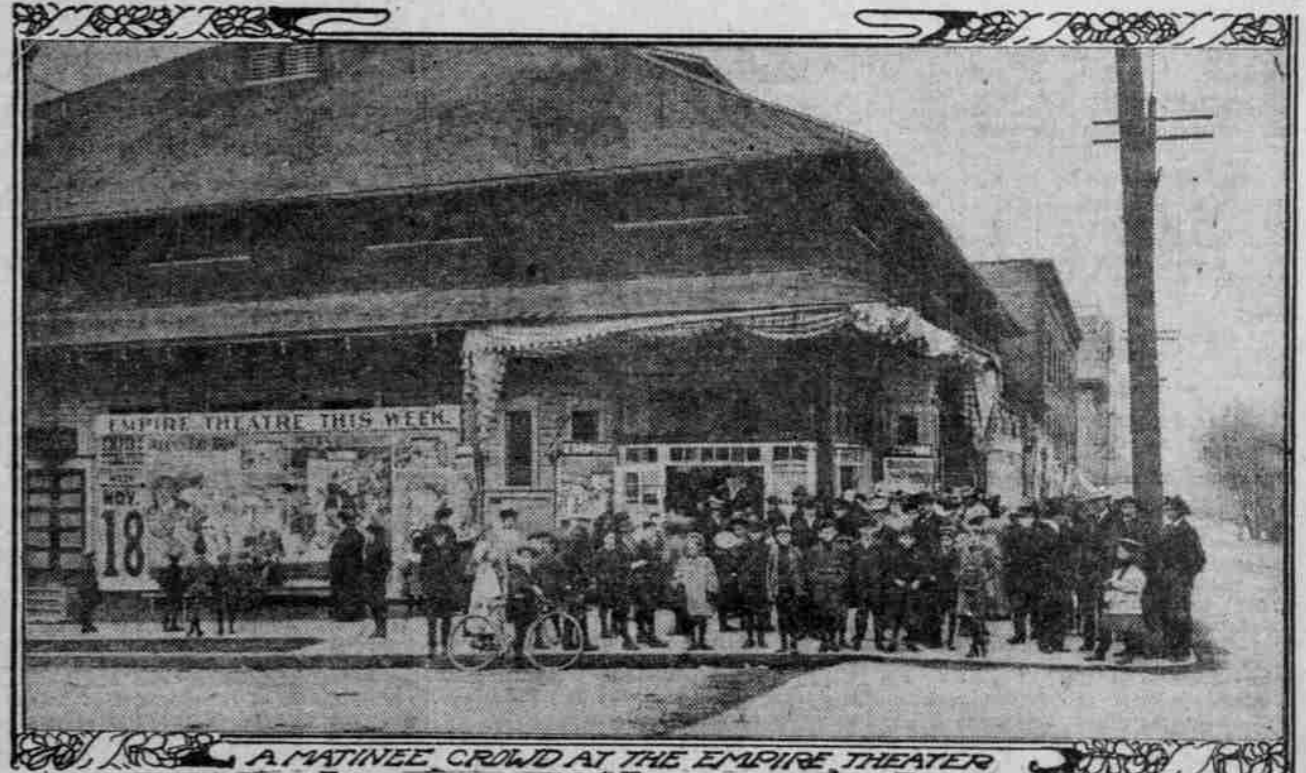
business man, having had a wide range of experience in other fields than the theatrical. Although but 33 years of age he has engaged extensively in mining and other lines of business activities quite foreign to the theater. From the time he was ten years old, however, he has been associated at various times with theatrical work. His uncle, Francis Penn Steel, was president of the Academy of Music corporation in Philadelphia, and when Sullivan & Considine's present chief lieutenant was but ten years old he was given a position at the Academy, one of Philadelphia's chief places of

States of Oregon, Washington, Idaho and Montana and British Columbia, making it the largest syndicate of its kind in the country, with the single exception of the Klaw & Erlanger concern.
As lessee and manager of the Marquam and Heilig theaters for the past 12 years, Mr. Heilig is one of the best-known and most successful business men in the city. He has made a thorough study of amusement matters, and has consequently made few mistakes in catering to the theater-going public.
For years he has been offering the very best companies which visit the West, and his name has become a guarantee of excellence. Owing to his extensive interests, Mr. Heilig has been absent from the city much of the time during the past year or two, and most of the management of his local business has de-

veloped upon William T. Pangie, his local manager.
The Heilig has enjoyed a very prosperous year, and the prospects for 1907 are even more promising.
George L. Baker in Front Rank.
George L. Baker stands in the very front rank of Western stock managers, and his company and the splendid offerings of high-class plays are doing much to advertise Portland as a theatrical center. During the past year Mr. Baker successfully managed a road tour of his company, playing "The Christian" throughout the Northwest with most satisfactory artistic and financial results. At the close of the tour he brought the company back to Portland for a Summer engagement, and re-established the Baker as a stock theater. The regular season opened September 2, and has been the

most brilliant and profitable in the history of the city. He is also manager of the Empire, devoted to the Star & Havlin attractions.
Mr. Baker has been connected with the theatrical business in various capacities since the early '80s. His experiences have been many and varied, but as a result he knows the business thoroughly. In his early years he was connected with the mechanical staff of San Francisco theaters. For a time he appeared as an actor in the support of Rose Wood, a famous star of the period. As he expresses it, he soon made up his mind that, while acting may be art, the management department of the business gets the most vegetables, bread, butter and other luxuries of life, so he gave up trying to pose in the spotlight and devoted himself to the business end.

He came to Portland about 12 years ago, and shortly afterward became assistant manager of the Marquam, under Calvin Heilig, with whom he has always been closely associated since. Becoming ambitious on his own account, he secured the old Metropolitan Theater, now the Baker. He managed it for a year or two with varying success, until he conceived the idea of making it the house of a permanent stock company, since which time, with the exception of the season of 1906-6, when he devoted the house to burlesque, he has been identified with stock productions.
He has built himself up to a point where he is a commanding figure in the theatricals in this section, and the future has even better things in store for him. His spacious and elegant suite of offices in the Mohawk building are the most ex-



A MATINEE CROWD AT THE EMPIRE THEATER

priced stock which has proved highly popular and lucrative. Mr. Errickson is pre-eminently a

amusement. He early developed a taste and ability for the work upon which most of his subsequent efforts have

and the tremendous patronage it has received here is the best proof that it is a favorite with the public.