

FREIGHTS COLLIDE ON HIN UP GRADE

Light Train Rams the Heavy Train From Rear, Smashing the Caboose.

ONE BRAKEMAN IS KILLED

Engine of the Light Train Now Hangs on Verge of a Forty-Foot Embankment on the Edge of the Columbia.

PENDLETON, Or., Dec. 11.—(Special.)—One man killed and two badly injured in the result of rear-end collision between freight train near Riverview, a small station 10 miles up the Columbia from Umatilla, at about 4:20 this afternoon.

Freight train No. 21, in charge of Conductor Boucher, was pulling up the steep grade on a curve and at a snail's pace, when an extra freight train, only eight cars, in charge of Conductor Davidson, crashed into her from behind.

The engine of the extra freight was thrown from the track and is hanging on the verge of a 40-foot embankment, shooting straight into the ground.

Practically all of the extra freight was wrecked, while several cars of the regular were derailed and broken into pieces and the train itself cut into three parts.

TWO LINEMEN ARE KILLED

Fall From Telephone Poles While Repairing Damages at Aberdeen.

ABERDEEN, Wash., Dec. 11.—(Special.)—Two fatalities to linemen working within two blocks of each other occurred this morning. The victims were James M. Dean, aged 28, who came here recently from Tacoma, and Oscar Hansberry, whose relatives live in Hillsboro, Wis.

SUPERINTENDENT TO WHIP

Oregon City Principals Forbidden to Lay Hands on Pupils.

OREGON CITY, Or., Dec. 11.—(Special.)—The board of directors of the Oregon City schools last night established a rule directing that in the future all corporal punishment be inflicted by City Superintendent W. C. McKee.

CRUSHED BY ENGINE WHEELS

Sherman County Farmer Hangs to Pilot for Brief Moment.

THE DALLES, Or., Dec. 11.—(Special.)—John Hull, a farmer of Sherman County, was crushed to death under an O. R. & N. switch engine on First street, near the company's yards here, this afternoon.

Site for Eugene Postoffice.

EUGENE, Or., Dec. 11.—(Special.)—Word came today that the Government had selected the William Renshaw lot at the corner of Sixth and Willamette for the new postoffice site.

will be passed by all visitors to the city and will add greatly to the appearance of the town nearest the depot.

Concert Tour Arranged. UNIVERSITY OF OREGON, Eugene, Or., Dec. 11.—(Special.)—Arrangements have been completed for the annual concert of the University of Oregon Glee and Mandolin Clubs.

Islesworth Arrives at Aberdeen.

ABERDEEN, Wash., Dec. 11.—(Special.)—The steel steamer Islesworth came into port today, finding a sailing. She was docked at the Slade Mill Company plant and will take away for Australia nearly 2,000,000 feet of lumber.

Sale of the Steamer Bee.

ABERDEEN, Wash., Dec. 11.—(Special.)—The new steamer Bee, built in the yards here last year, has been sold to the Western Transit Company, composed of Aberdeen and San Francisco people, and will be used for the transportation of lumber between here and San Francisco exclusively.

DAIRYMEN AT ASHLAND

FOURTEENTH ANNUAL MEETING TO LAST TWO DAYS.

Commercial Club Keeps Open House and the Delegates Are Given a Warm Reception.

ASHLAND, Or., Dec. 11.—(Special.)—The 14th annual meeting of the Oregon Dairyman's Association convened at Ashland today for a two days' session. The Ashland Commercial Club kept open house for the delegates and gave them a hearty reception.

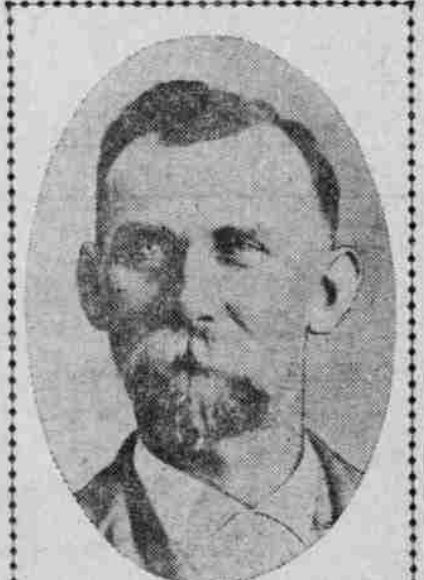
ALL BILLS PAID PROMPTLY

Work is Progressing in the Drain-Coo Bay Railroad.

DRAIN, Or., Dec. 11.—(Special.)—C. E. Loess, president and manager of the C. E. Loess Company, is in Drain today looking after his interest in connection with the Drain-Coo Bay Railroad. Reports that accounts against the company were not being paid seem to be without foundation.

Cadet Appointed From Alaska.

UNIVERSITY OF WASHINGTON, Seattle, Dec. 11.—(Special.)—George E. Wilkinson has been appointed to the Naval Academy at Annapolis by Delegate Waskey, of Alaska. Wilkinson is now a sophomore at the University of Washington.



E. C. Roberts, Recently Appointed Fruit Inspector of Linn County.

Engineer Dies at Post.

NEW WESTMINSTER, B. C., Dec. 11.—(Special.)—James G. Gillis, prominent young engineer of this city, was found dead at his post on the steamer Magnet. The young man was subject to heart disease, to which his death is ascribed.

Dies From Wound in Head.

VANCOUVER, Wash., Dec. 11.—While taking a candle from a drawer in the Old Kentucky Home saloon, late last night, Roy Long dropped the drawer to the floor. A revolver which lay beside the candle was discharged, the bullet striking Long in the head. He died later at the hospital.

BATTLES FOR SON

Will H. Thompson Accuses Prosecution of Unfairness

RETORT COMES VERY SHARP

Judge Snell Orders 50 More Names Drawn, and It May Be Friday Before the Trial Jury Is Selected.

TACOMA, Wash., Dec. 11.—(Special.)—After exhausting the special venire drawn last Friday for trial jurors in the Chester Thompson case, Judge Snell today ordered 50 more names drawn.

PRESIDENT OF THE CLACKAMAS COUNTY HORTICULTURAL SOCIETY.



Dr. T. E. Beard.

OREGON CITY, Or., Dec. 11.—(Special.)—Dr. T. E. Beard, newly elected president of the Clackamas County Horticultural Society, returned only recently to his former place of residence from Grants Pass, where he had been located for the last two years.

Democratic Leader Will Visit Salem During the Legislature.

ALBANY, Or., Dec. 11.—(Special.)—William Jennings Bryan, of Nebraska, leader of the Democratic party and Presidential candidate, will about January 15, 1907, come to Oregon, and will watch the working of the Legislature of this state.

Opportunity Given Residents to Object to Forest Reserves.

BOISE, Idaho, Dec. 11.—Same time ago W. E. Borah wrote Gifford Pinchot, chief forester, asking him to pay a visit to Northern Idaho, for the purpose of giving the people in that section an opportunity to consult him about the forest reserves and present their objections.

ALBANY CARLINE IS SOLD.

WILLAMETTE VALLEY TRACTION COMPANY SAID TO BE PURCHASER. ALBANY, Or., Dec. 11.—(Special.)—Albany's streetcar line was formally transferred to Portland capitalists today. The deed was made to a local attorney.

CASTORIA For Infants and Children.

The Kind You Have Always Bought Bears the Signature of J. C. Watson.

blity of the individual dairyman for purity of dairy products and pleaded with him to do his part as nature has done hers.

COLLISION WITH LOG TRAIN

Engineer of Northern Pacific Train May Die of Wounds.

SEATTLE, Wash., Dec. 11.—(Special.)—Train No. 3, of the Northern Pacific, bound from Seattle to Bellingham, collided with a trainload of logs near Edgewood, three miles from Arlington, at 7 o'clock tonight.

Tanner Must Make Answer.

SALMON, Or., Dec. 11.—(Special.)—The Supreme Court today ordered Attorney Tanner to file an answer to the writ of habeas corpus granted in his case.

BOY PLAYS WELL AT CARDS

CELLMATE TESTIFIES CONCERNING SLOANE'S CONDUCT.

Testimony to Be Given This Morning Is Expected to Be of a Sensational Nature.

SPOKANE, Wash., Dec. 11.—(Special.)—The Sloane trial today the prosecution threw a bombshell into the camp of the defense that evoked a storm of protest.

Violent Storm at Hoquiam.

HOQUIAM, Wash., Dec. 11.—(Special.)—The third violent wind storm in as many weeks has just swept this city, and for the second time in a month the city water supply has been cut off and the manufacturing plants forced to close until the damaged flume, which was broken by a falling tree, is repaired.

THE BEST \$3.00 Christmas Gift

A Year's Subscription to Scribner's Magazine

A handsome certificate of subscription furnished free. If you subscribe now the first issue will be mailed for delivery on Christmas Day.

Plan Fair for San Francisco.

SAN FRANCISCO, Dec. 11.—Fifteen citizens yesterday formed a corporation to be known as the Pacific Ocean Exposition Company, which plans to give a mammoth fair in 1912 to commemorate the 40th anniversary of the discovery of the Pacific Ocean by Balboa.

Clerk and Money Missing.

SEATTLE, Wash., Dec. 11.—W. W. Russell, clerk in the Hotel Shirley, has disappeared, and with him is missing \$1050, taken from the hotel safe. Of this amount \$200 was money belonging to hotel guests, left in the safe for safe-keeping.

Elected Chief by One Vote.

ALBANY, Or., Dec. 11.—(Special.)—In a hotly contested election C. N. McKee, of Albany Engine Company No. 1, was elected chief engineer of the whole department over Frank Watson, of Linn Engine Company No. 2, by a bare majority of one vote.

Commits Suicide at Sea.

SEATTLE, Dec. 11.—John Smith, a passenger on the steamer Umatilla, committed suicide by shooting himself soon after the vessel sailed from San Francisco three days ago. Upon the arrival of

For Pianoless Music Lovers

PICK OUT YOUR PIANO, BUT PLEASE BE QUICK IF YOU'LL STORE ONE FOR US AND PAY US CARTAGE YOU MAY USE IT FREE!

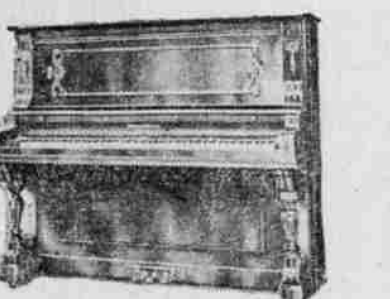
We Must Make Room for Several More Carloads Right Away Store Open Evenings to Accommodate All.

This is certainly a most unusual offer, but we mean just what we say. New instruments are crowding us for space, which, on account of delayed building operations, we haven't got to give them.

A Bona Fide Offer

Look at the Makes

You are not restricted to a few cheap, undesirable pianos, but can choose from the finest line in America—the glorious Chickering, wonderful toned Webers, elegant Kimball, Hobart M. Cables, and many other of our matchless makes.



Several carloads of these pianos—old established make—\$177, or \$180 for the fancier styles. Small dealers sell these for \$300 and \$325!

EILERS PIANO HOUSE

THE HOUSE OF HIGHEST QUALITY NEW NUMBER, 353 WASHINGTON, CORNER PARK

the vessel in port this afternoon the body was taken in charge by Coroner Carroll. It is believed that the dead man assumed the name of John Smith before boarding the Umatilla.

Dry Kiln Burns During Storm.

SOUTH BEND, Wash., Dec. 11.—(Special.)—The dry kiln of the South Bend Mill & Lumber Company burned last night. The estimated loss is \$10,000. The fire occurred during a severe wind storm. The mill's fire apparatus saved the mill and adjacent structures.

Violent Storm at Hoquiam.

HOQUIAM, Wash., Dec. 11.—(Special.)—The third violent wind storm in as many weeks has just swept this city, and for the second time in a month the city water supply has been cut off and the manufacturing plants forced to close until the



LASH'S KIDNEY & LIVER BITTERS CURES DYSPEPSIA



A discriminating smoker never grows tired of these high-class, mouth-piece cigarettes. The longer he smokes them, the more he appreciates their wholly satisfactory qualities.

IMPERIALES CIGARETTES

are in high favor with all classes of smokers. They are smoked because they satisfy, not because of their low price. Made of the finest tobacco. The mouth-piece assures a cool, mild, clean smoke!

10 for 10 cents THE JOHN BOLLMAN CO., Manufacturers, San Francisco