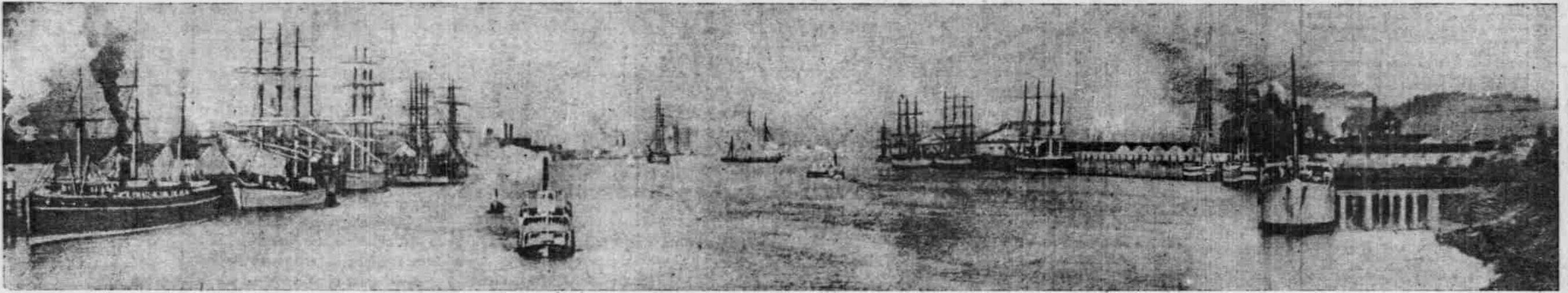


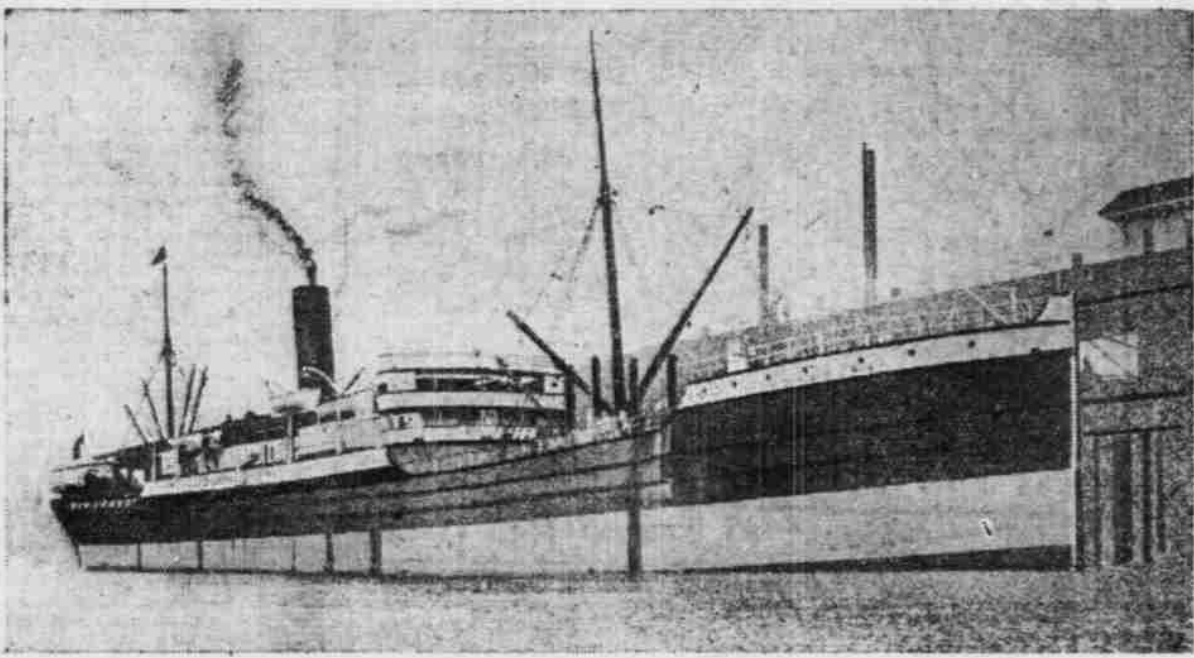
PORTLAND FIREBOAT, GEORGE H. WILLIAMS.



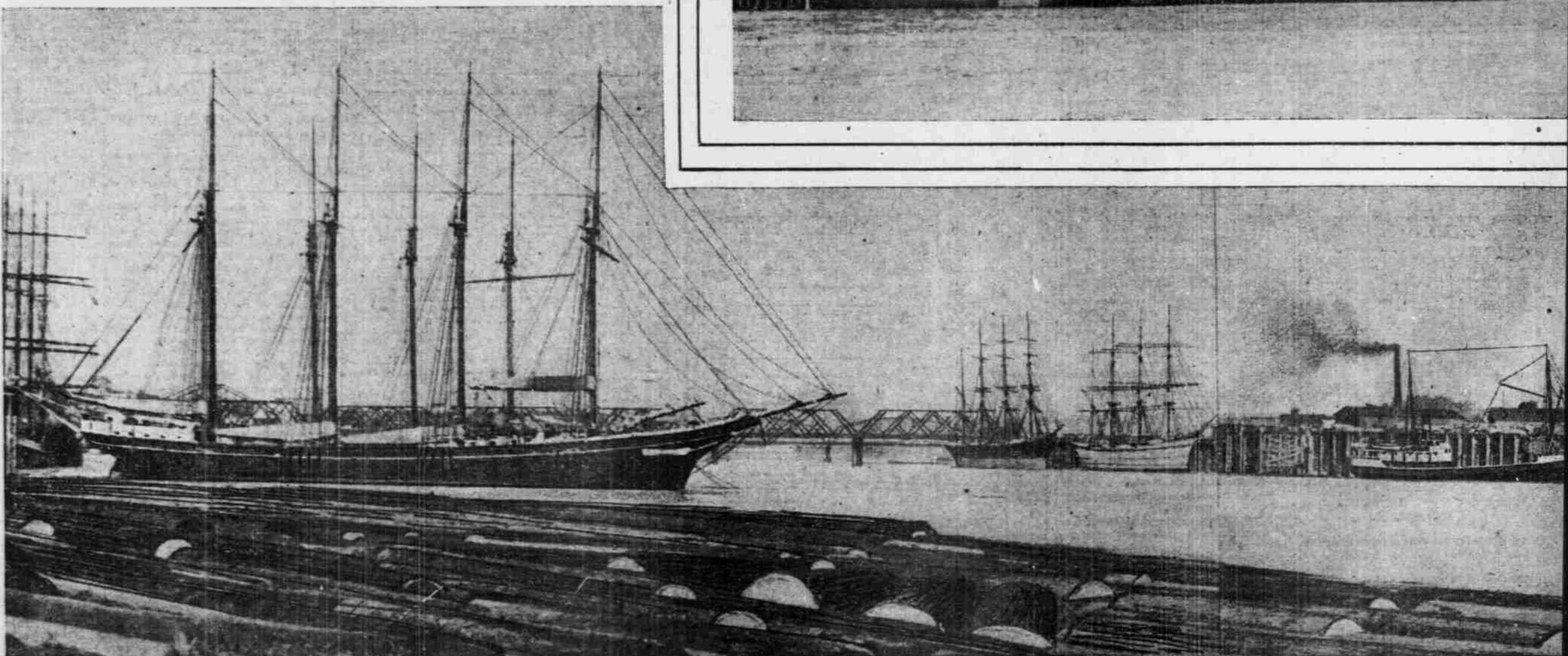
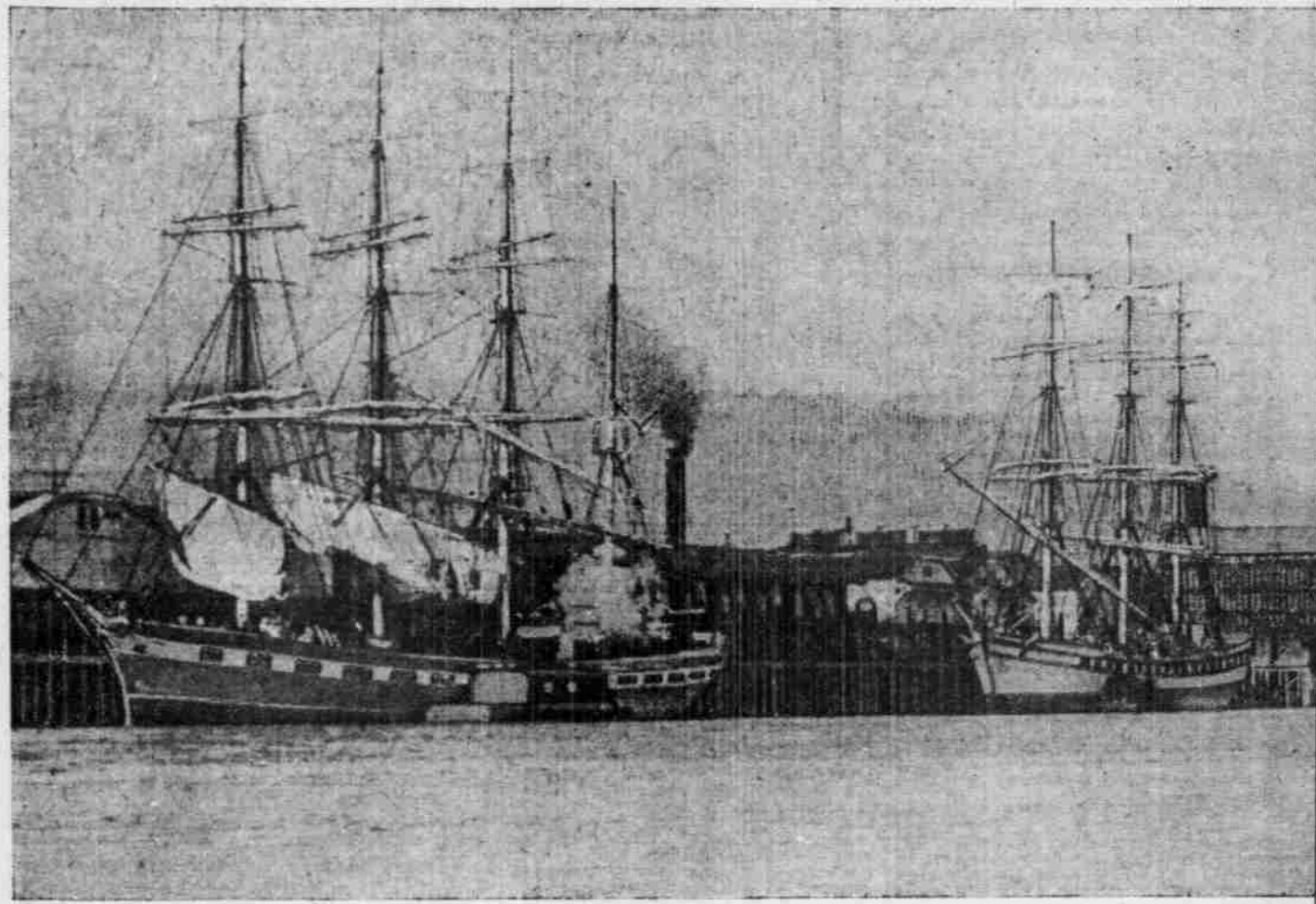
VIEWS OF PORTLAND HARBOR.  
THE ONLY FRESH WATER HARBOR ON THE PACIFIC COAST.



LOWER HARBOR FROM STEEL BRIDGE, WITH WHEAT SHIPS IN PORT.



STEAMER OF THE TRANS-PACIFIC LINE.



UPPER HARBOR ABOVE MADISON BRIDGE, LOOKING EAST.