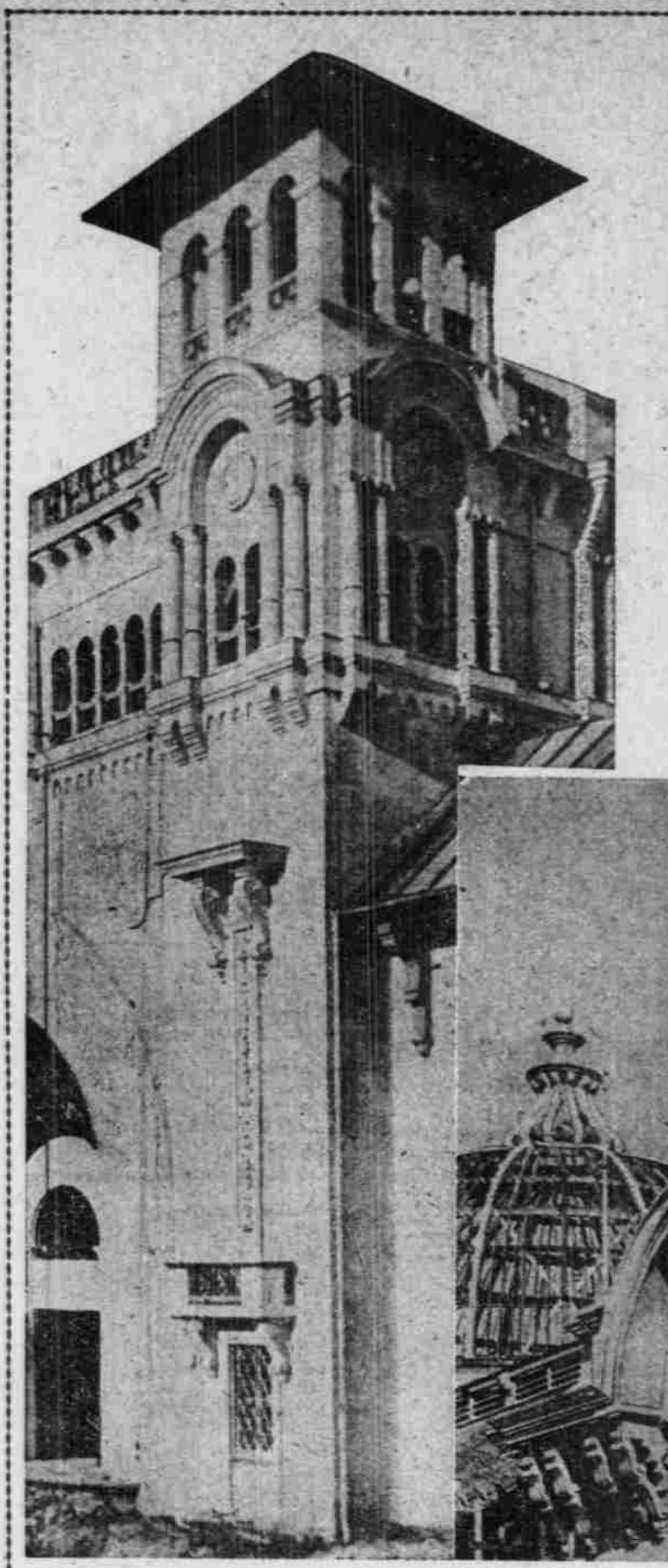


the meeting, and they were representative men from every part of the county...

The work of planning and preparing the exhibit was delegated to a committee of nine, composed of the three members of the County Court and six other taxpayers...



CORNER TOWER OF EUROPEAN BUILDING.

MORROW. The exhibit of Morrow County will consist of livestock, wool, grains, grasses, fruits, vegetables and fuel.

Morrow County has grown sheep since her earliest settlement and her ranges now support 250,000 head.

samples of wool which will no doubt show up favorably for this county.

TILLAMOOK. Tillamook County will make an exhibit but, owing to the nature of our products, we shall not be able to complete it until late in the season of 1905.



RELIEF BUST OF CHIEF MULTNOMAH ON TOWER OF EUROPEAN BUILDING.

BOSS ON MAIN TOWER OF EUROPEAN BUILDING.

UMATILLA. UMATILLA COUNTY reports good progress being made in securing products of the soil and exhibits from its several industries.



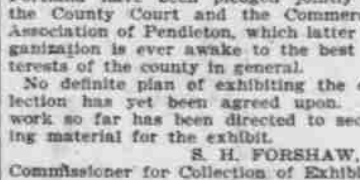
FRATERNAL BUILDING.

30 large jars of very fine peaches, grapes, plums, apricots, pears, etc., and will have a supply of fresh fruits in season constantly on hand during the time of the Exposition.

worked by a process of osmosis to extract its last sugar; (7) white sugar before it is separated from the molasses and dried for packing; (8) finally the white and brown sugar and the refuse or beet pulp.

In the way of fruits and vegetables, the Milton country will, of course, make the largest showing in fruits.

The several breeders of pure-blooded sheep will be there with some of the fleeces grown on the range of Eastern Oregon.



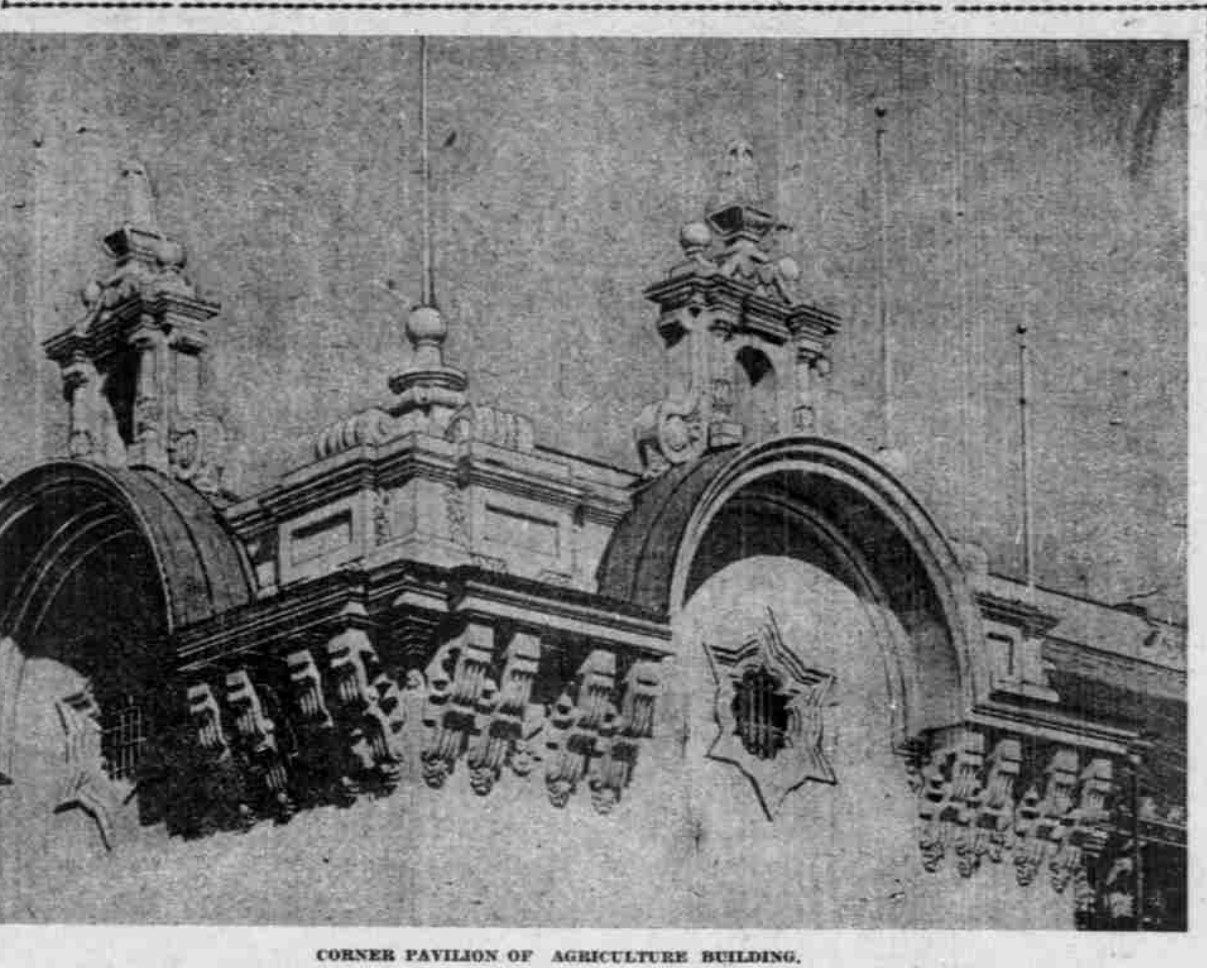
RELIEF BUST OF CHIEF MULTNOMAH ON TOWER OF EUROPEAN BUILDING.

WASCO. TO FURNISH a short article descriptive of Wasco County's proposed exhibit is a somewhat difficult task.

worked by a process of osmosis to extract its last sugar; (7) white sugar before it is separated from the molasses and dried for packing; (8) finally the white and brown sugar and the refuse or beet pulp.

WALLOWA. IT IS our purpose to make of the exhibits a complete exposition of the resources of Wallowa County...

WASCO. TO FURNISH a short article descriptive of Wasco County's proposed exhibit is a somewhat difficult task.



CORNER PAVILION OF AGRICULTURE BUILDING.

WASCO. TO FURNISH a short article descriptive of Wasco County's proposed exhibit is a somewhat difficult task.

WASCO. TO FURNISH a short article descriptive of Wasco County's proposed exhibit is a somewhat difficult task.



RELIEF BUST OF CHIEF MULTNOMAH ON TOWER OF EUROPEAN BUILDING.

WASCO. TO FURNISH a short article descriptive of Wasco County's proposed exhibit is a somewhat difficult task.

WASCO. TO FURNISH a short article descriptive of Wasco County's proposed exhibit is a somewhat difficult task.

WASCO. TO FURNISH a short article descriptive of Wasco County's proposed exhibit is a somewhat difficult task.



TOWER OF ORIENTAL BUILDING.

The Fair makes it necessary, in order to keep up with the procession, to expend more money, and to make a greater effort than was at first contemplated.

THE FAIR makes it necessary, in order to keep up with the procession, to expend more money, and to make a greater effort than was at first contemplated.

scoured and assorted, and as it is taken from the sheep.

WASCO COUNTY is not going to occupy as much space as some other counties but hopes to make up in quality what may be lacking in quantity.

DOUGLAS. DOUGLAS COUNTY will make an exhibit of its endless variety of resources, through the co-operation of the County Court and the Commercial Club.

BAKER. BAKER COUNTY people have some conception of the magnitude of the thousands of people who will visit Oregon and the Northwest generally and their products and resources second to none in the state.

YAMHILL. (Air: Bridget Donahue) 'T'S IN the County Yamhill. Just fifty miles from Fair.

Statuary From St. Louis. Beautiful Pieces of Sculpture Given to Western Fair.

Statuary From St. Louis. Beautiful Pieces of Sculpture Given to Western Fair.

Statuary From St. Louis. Beautiful Pieces of Sculpture Given to Western Fair.

Table titled 'PACK OF CANNED SALMON' listing various products and their prices.

WHAT GROWS ON OREGON SOIL. STATE AGRICULTURAL COLLEGE WILL MAKE LIVING DISPLAY ON EXPERIMENTAL GROUND.

WHAT GROWS ON OREGON SOIL. STATE AGRICULTURAL COLLEGE WILL MAKE LIVING DISPLAY ON EXPERIMENTAL GROUND.



MACHINERY, ELECTRICITY AND TRANSPORTATION BUILDING.

BUILT BY THE BURELL CONSTRUCTION COMPANY.

WASCO. TO FURNISH a short article descriptive of Wasco County's proposed exhibit is a somewhat difficult task.

have taken similar action. First of all, it is proposed to make an exhibit of the minerals of the county that will give an adequate idea of the wonderful resources of the three great mineral belts of Eastern Oregon.

Table titled 'OREGON AS A MANUFACTURING STATE' showing statistics on industries, workers, and capital.

unirrigated lands, the apples of Eagle Valley, pears, apricots, grapes, peaches, plums, prunes, all will be exhibited.

YAMHILL. (Air: Bridget Donahue) 'T'S IN the County Yamhill. Just fifty miles from Fair.

Statuary From St. Louis. Beautiful Pieces of Sculpture Given to Western Fair.

Statuary From St. Louis. Beautiful Pieces of Sculpture Given to Western Fair.

Statuary From St. Louis. Beautiful Pieces of Sculpture Given to Western Fair.

Table titled 'PACK OF CANNED SALMON' listing various products and their prices.

WHAT GROWS ON OREGON SOIL. STATE AGRICULTURAL COLLEGE WILL MAKE LIVING DISPLAY ON EXPERIMENTAL GROUND.

WHAT GROWS ON OREGON SOIL. STATE AGRICULTURAL COLLEGE WILL MAKE LIVING DISPLAY ON EXPERIMENTAL GROUND.



MACHINERY, ELECTRICITY AND TRANSPORTATION BUILDING.

BUILT BY THE BURELL CONSTRUCTION COMPANY.

WASCO. TO FURNISH a short article descriptive of Wasco County's proposed exhibit is a somewhat difficult task.