

county last year is estimated at 20,000 head, netting the stockraisers the sum of \$500,000.

Cattle Feeder Sold for \$575,000.

Saddle horses and caresses, for use in the United States Army and British Army, have been disposed of to the number of 250 head, bringing in a figure of \$15,000 to our ranchmen of medium means. Added to that, 500 unbroken mules, swell the column by \$50,000.

During the year the movement in sheep was very active. Many bands, numbering up into the thousands, changed hands at the top price of \$2.50 to \$3.00 per head, and being still on the range in this county are not considered as clear profit. However, there were marketed 20,000 mutton wethers, which aggregated \$15,000, besides the wool clip, which in this county is not considered as clear profit. Thus it will be seen by the foregoing, that the total income for our product marketed without our borders amounts to \$300,000.

Arid Land Reclaimed.

An act of Congress grants to certain states, on conditions, 1,000,000 acres, each, of arid land. It is generally known as the "Carey Desert Land Law." And our Legislature Assembly, at its last session, accepted the terms of this grant. These provisions, wise or unwise, permit any person, or company of persons, or an association or incorporated company, by exhibiting a feasible plan of water supply for the reclamation of any tract, or subdivision of land, in this county, and the same, rejected and withdrawn from disposal under the General Land Laws, and eventually patented to the state. However, the persons who attempt such reclamation, in case of compliance with the law, retain absolute control of all the lands selected by them until disposed of by the state, and in which case their lien for costs and expenses, and interest at six per cent per annum for such reclamation, must be first paid and satisfied by any parties who may desire to purchase such land. An unusual instance was given to acquiring arid lands by reason of the enactment of the foregoing laws, and since the 24th day of May, the date of the taking effect of the state act, about 1,000 acres have been listed and withdrawn from the public domain in this county. It is generally believed that the effort that will be made to reclaim lands taken under the Carey act will result beneficially to the country by bringing our arid lands into cultivation, and that the large contract holding, (contracts with the state) will ultimately be broken up into lesser tracts and pass into the possession of settlers and homesteaders.

MALHEUR COUNTY.

Indications Found of Petroleum, Having a Paraffine Base.

In attempting to describe the resources of Malheur County, one enters upon a task of considerable magnitude. To treat the subject as it should be would require a volume of no mean size. The greatest industry is stockraising. The ranges in this county are extensive—it being the largest county in the state but one. It is 164 miles from north to south and 60 miles from east to west, and it affords pasturage for thousands of horses, cattle and sheep, for the latter two the market is always a good market. Horses at the present time are also good property, on account of the two wars—the Spanish-American and the Boer Wars. The United States and British Governments being great buyers of horse flesh. Over 1000 carloads of livestock are shipped out of this county annually, most of which is cattle and sheep, and millions of pounds of wool. Mining is carried on to considerable extent in the northwestern portion of the county. Some of the oldest placer diggings in the state are located in that portion of the county, and at the present time there are a number of good quartz mines being worked, notably the Red, White and Blue, and the Bonanza, and the Golden Eagle, about six miles from there. The latter mine is said to be one of the richest mines on the Pacific Coast. Aside from these there are a number of splendid quartz prospects, lacking only the necessary capital to make them among the great wealth-producing mines of the West.

Crops Grown by Irrigation.

As an agricultural section this county has a great future. There is no greater work about the crops. The irrigation system is in vogue in this section, and there are a number of splendid irrigating canals scattered over the country, and a plentiful supply of water for all the land that is suitable for cultivation. There are a number of reservoir systems in course of construction that will place in the neighborhood of 75,000 acres more land under irrigation. One reservoir has just been completed near Unity, in the northwestern portion of the county, that will place 20,000 acres under cultivation. Another reservoir in course of construction and nearly completed is called the Star reservoir, which will bring in the neighborhood of 20,000 acres under cultivation. There is much of this land under these reservoir systems and irrigating ditches that is yet uncultivated and in a wild state—some being Government land and open for settlement, some being school land, belonging to the state, that can be purchased at \$1.25 per acre. The Government land can be taken up under the homestead law, which requires an actual residence of five years upon the land, and a limit of one-fourth of an acre, or 160 acres to be taken up by one citizen. The soil in this county is unsurpassed for agriculture and fruit raising, where water can be had, wheat yields from 25 to 30 bushels to the acre, barley from 30 to 100 bushels to the acre. Alfalfa produces from five to ten tons to the acre. Potatoes, onions and other vegetables produce immense crops. Fruits of all kinds grow luxuriantly. Apples, peaches, apricots, plums, strawberries, blackberries, grapes, etc., are produced in great quantities.

The dairying industry has been sadly neglected in this county and offers great opportunities for development. Butter sells at 25 to 35 cents per pound throughout the year, and there is a good demand for milk in the towns and city. Poultry-raising is another industry that has been neglected. Eggs bring from 15 to 40 cents per dozen and a great many are shipped into the county from the outside. Chickens command from \$3 to \$5 a dozen, and turkeys from 75 cents to \$1 each. The culture is one of our growing industries, and Malheur County promises to rank well up with the greatest producers of hopy in the country. Bear fare

well on alfalfa, which is grown extensively, and on the wild flowers which cover our hills. Our honey has an excellent P-45.

No Better Place for the Homeseeker.

The opportunities offered the homeseeker by Malheur County are excellent by no other section of the country. There are thousands of acres of Government land in this county as good for agricultural and horticultural purposes as any land on earth, and far ahead of nine-tenths of it, waiting for the homeseeker to turn on the water and change it from a semi-arid desert to a homeseeker's paradise. The soil is very deep and it is next to impossible to wear it out. Land that has been used for alfalfa for 12 or 13 years produces a tremendous crop of alfalfa. It is seen that alfalfa acts as a fertilizer and enriches the soil to a wonderful extent.

There are some 26,773 acres in this county, and not more than one-sixth of it has been filed upon, much of the remainder being good land suitable for grazing or agricultural purposes, and offering an independent living to the farmer and stockman alike. There are a number of such opportunities within a radius of five miles of Vale, the county seat and some even closer in. The homeseeker can suit himself as to location. He can get a ranch in almost any part of the county that he takes a liking to, north, east, south or west.

There are several road companies with large holdings in this county—and they hold the best land to be had—land that has been granted them or their predecessors by the Government, for the construction of public highways through this section. One of these—the Willamette Valley & Cascade Mountain Wagon Road Company, owns 25,000 acres along the main road through this county. This land can be bought almost as cheap as land can be acquired from the Government. Another, The Dalles Military Wagon Road Company, which has been succeeded by the Willamette Oregon Land Company, holds 25,000 acres, which, like the other, can be had at a reasonable price. Much of this land lies along the Willamette Valley, and is already under an irrigating ditch, and much more which an irrigating ditch can be brought over, making it very desirable for an ideal home.

Good Indications of Oil.

The oil excitement is running high in this county, and there seems to be a great future in store for Malheur County, as an oil-producing section. If one-tenth part of the oil is found that experts say will be found. The indications point to a paraffine base which yields a fine quality of lubricating and illuminating oil. There has been a number of prominent oil experts in the field—men who have explored the oil fields of Texas, California and other great oil-producing states, and all pronounce this to be among the best oil prospects they have ever seen. The oil belt is very extensive, being from 60 to 100 miles in length and about 30 miles in width. The indications of oil, as pointed out by experts, include in part black and brown shales, sandstone and other evidences of a sedimentary deposit, together with fossiliferous beds and other marine indications. The oil also appears in the water of some of the deep wells drilled in the county in the eastern portion of the county along the Snake River.

There are two oil-boring outfits on the ground, one of which is located at Onkarto, in the northern portion of the county, and has reached a depth of 1043 feet, where a strong flow of natural gas was encountered. Work has been suspended for some time pending the arrival of casing. The other outfit is located in Dry Gulch, about 12 or 15 miles north of Vale, and is a standard plant, with a 40 horse-power boiler and engine, and a drill capable of putting down a hole for 115-inch casing (inside measure). The last-mentioned outfit is the property of a powerful syndicate of Portland and Vale business men, who will spare no expense to learn if oil is to be found in paying quantities. This is only a forerunner of what is to come, and Spring will see the establishment of many other outfits in the oil district. In Sandhollow about 10 miles south of Vale, the indications of petroleum are very pronounced; at times the smell of petroleum in Sandhollow Creek is so strong as to be disagreeable. Rocks from that section, when rubbed together to produce a friction, give forth the unmistakable odor of petroleum. The indications in Dry Gulch are much the same as in Sandhollow.

Hot Springs at Vale.

Vale, the county seat, has two of the finest hot gushing wells in the United States. They throw a great quantity of boiling mineral water, of the finest quality, high in the air, when permitted to flow full play. The largest, or, rather, the oldest, throws a volume of water from 20 to 45 feet in the air, and the new well-thrower water from 15 to 20 feet high. A good bathhouse has been established at this place, and the medicinal qualities of the water are proving a great benefit to the sick, who come for miles to enjoy its benefits. The water was analyzed at the Oregon experiment station at Corvallis, and found to contain the following ingredients:

- Potassium sulphates..... .077
- Sodium chloride..... .457
- Sodium sulphate..... .007
- Magnesium chloride..... .007
- Calcium sulphate..... .147
- Silicic acid..... .007
- Aluminum oxide..... .000

Aside from these two wells there are a number of hot springs scattered along the Malheur River for a distance of perhaps half or three-quarters of a mile. There are also a number of hot springs about 12 miles above Vale, at a place which is known as the Warm Springs, which is practically the same as the hot springs at Vale. S. O. COOLIDGE, Vale.

Oregon Better Than Oklahoma.

"The United States has more good homesteads to give away in Oregon than were given away recently in Oklahoma." This is the assertion of Jefferson Myers, a Salem attorney and ex-State Senator from Linn County, who was present at the drawing of claims in the Oklahoma Territory last Summer. He says: "In falling to turn thousands of the Oklahoma homeseekers to Oregon, the people of this state lost the best opportunity they ever had to secure a desirable immigration. There were assembled at the land office about 300,000 people, of whom 150,000 registered as desiring homesteads. There were 15,000 claims to be given away, and, from my observations, I am certain that not to exceed 1000 of these claims were worth having. There are 50,000 claims west of the Rocky Mountains, and more than 100 in the Oklahoma country. The great majority of the people who went to Oklahoma were genuine homeseekers who had sold out elsewhere and were looking for a new and better life. They were intelligent lot of people, and it would have required but little effort to convince thousands of them that they could do better in Oregon than anywhere else. Those who secured good claims have remained in Oklahoma, and the remainder have gone to various other sections of the country."

Missouri's Interest in Oregon.

Governor A. M. Dockery, of Missouri, says of the proposed Portland Exposition: "I am in most hearty sympathy with the contemplated Lewis and Clark Centennial Exposition. Oregon is a child of Missouri. Our people were among her first settlers, and among them were some of our nearest relatives. As a native Missourian, I have taken special pride in her growth and development. It seems peculiarly appropriate that the approaching Lewis and Clark Centennial should fittingly commemorate the growth of our grandeur of the Pacific Slope. The best wishes of the people of Missouri are with you for the success of your enterprise."

GRAPE CULTURE SUCCESSFUL

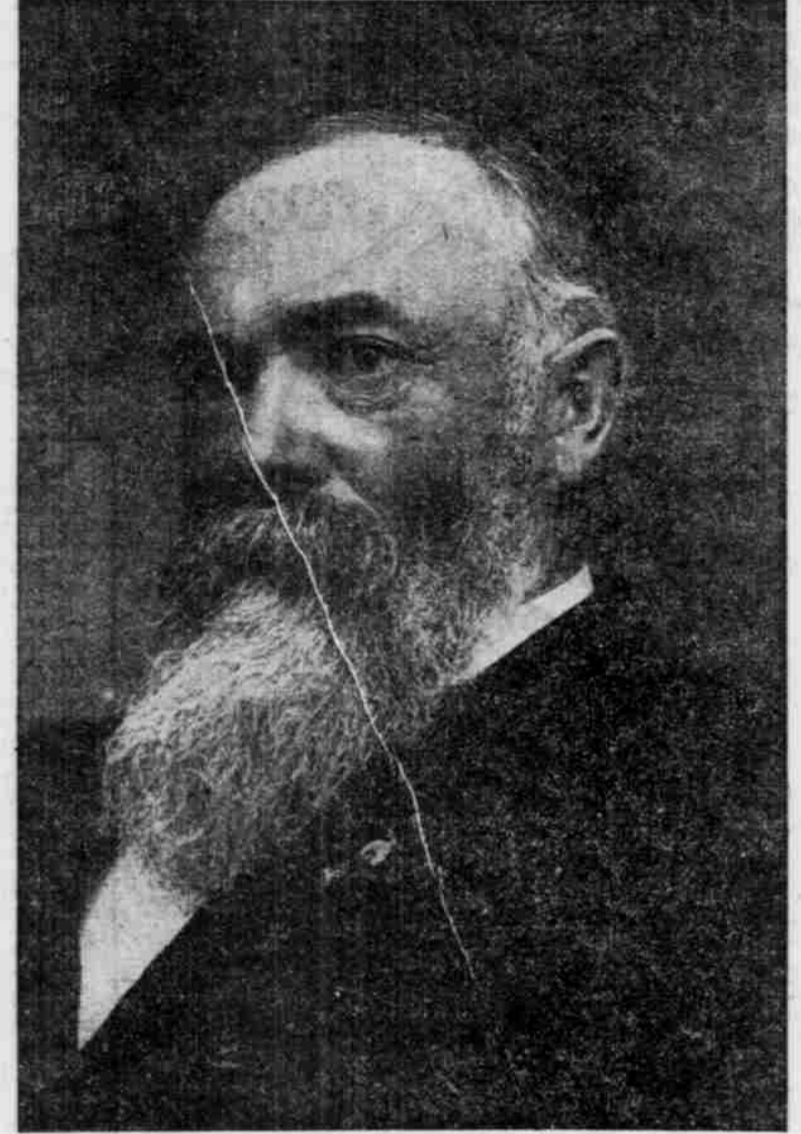
Vineyards, Properly Managed, Will Yield From 11,250 to 22,500 Pounds of Fruit to the Acre—How to Plant Vines.

IT SEEMS at all times, from antiquity to the present, the grape has been one of the favorite fruits of most everybody, and much care has been bestowed on its cultivation. We need not be surprised when we learn that emigrants to new countries took grape vines along with them and planted them in their new homes. The first settlers who came to the present United States to make their new homes found the grapevine growing wild in the woods everywhere, but the berries were small and sour. However, they were used to some extent. Plants of the European grapevine were brought over to this country and tried, but would not succeed. Larger plantations of the European grapes were made at the first

American people generally like the Concord kinds much better than they do other kinds, and they sell for a much better price than the California kinds. In most parts of the Willamette Valley the climate is not favorable to the foreign grape, and its planting should not be encouraged, but in Eastern and Southern Oregon they grow to perfection. A few carloads of Concord grapes, were sent here from the East every Fall, but this is no longer necessary, for we can now grow enough good grapes here to supply the home market, and, more than this, I have no doubt that the time will soon come when grapes will be shipped from Portland to other states, and even to California; that is, the Concord. I have tried more than 20 different kinds, but only three of them can be recommended as the very best, and answering to all purposes. These are the

MADE PRODUCTIVE BY IRRIGATION.

Thousands of Acres in Klamath County Formerly Considered Worthless, Now in Cultivation.



HON. H. E. ANKENY.

In point of large production, arid belts of land, when properly irrigated, are much more valuable for agricultural purposes than fertile valley lands that are supplied by nature with an abundance of water through heavy and perhaps, at times, excessive rainfalls.

A general idea of the vast benefits of irrigation is found in the statement recently made by the Hon. H. E. Ankeny, of Eugene, Or., that land in the Klamath Falls region, which formerly sold at \$2.50 an acre, is now selling for \$20 an acre. Before the construction of irrigating ditches through this section the land was practically worthless. Today, with the aid of water supplied by this system of irrigation, it is extremely valuable for raising alfalfa, barley, oats, wheat and general crops. The district referred to above lies in Klamath County, Southeastern Oregon. For many years the chief business of this country was cattle raising. During the past few years the construction of an irrigating ditch, of which Mr. Ankeny is the chief owner, through this section of country has demonstrated that these lands are worth much more in the open markets than lands of the ordinary cattle range. Two crops of alfalfa, three tons each per acre, in a single season, have been grown in these lands that are watered, and thousands of acres of this land now bear heavy annual crops of oats, wheat and timothy hay.

The lands are especially adapted to fruitgrowing, and some of the finest fruit produced in the Northwest has been picked in the orchards of this district.

The valley through which Mr. Ankeny's irrigating ditch runs is about 22 miles in length and from three to four miles wide. It is a country that is becoming wonderfully fertile through the introduction of proper irrigating facilities. The effort to supply water for the irrigation of these lands has resulted in practically an entire change in the general aspect of the country watered.

In addition to his efforts to develop the resources of Klamath County, Mr. Ankeny is part owner and manager of the famous Sterling mine, near Jacksonville, one of the best-paying hydraulic gold properties on the Coast. Mr. Ankeny is also the principal owner of the Bank of Medford. He makes his home, however, at Eugene, a very prosperous center of trade and an ideal home city, at the head of navigation on the Willamette River, a town located in one of the richest parts of the Willamette Valley.

How to Make a Vineyard.

In planting a vineyard we first select a suitable place. This should not be too low nor too wet, where cold nights can do damage. The most suitable place for grapes are our hills, and the western and southern slopes thereof. Soil that produces wheat or potatoes is rich enough for grapes. After the land is well plowed and harrowed thoroughly, rows are marked off, seven or eight feet apart, and suit. Then four-foot stakes are put in eight or more feet apart, as one wishes to plant his vines. I always recommend well-rooted one-year-old plants are preferred by most grapegrowers. Dig the first Summer the young vines are laid out and kept clean of weeds, and the center around which the roots are spread when planting, and then filled up with surface soil. Then the stake is put back again near to the plant. Healthy, well-rooted one-year-old plants are preferred by most grapegrowers. Dig the first Summer the young vines are laid out and kept clean of weeds, and the center around which the roots are spread when planting, and then filled up with surface soil. Then the stake is put back again near to the plant. Healthy, well-rooted one-year-old plants are preferred by most grapegrowers. Dig the first Summer the young vines are laid out and kept clean of weeds, and the center around which the roots are spread when planting, and then filled up with surface soil. Then the stake is put back again near to the plant. Healthy, well-rooted one-year-old plants are preferred by most grapegrowers. Dig the first Summer the young vines are laid out and kept clean of weeds, and the center around which the roots are spread when planting, and then filled up with surface soil. Then the stake is put back again near to the plant. Healthy, well-rooted one-year-old plants are preferred by most grapegrowers. Dig the first Summer the young vines are laid out and kept clean of weeds, and the center around which the roots are spread when planting, and then filled up with surface soil. Then the stake is put back again near to the plant. Healthy, well-rooted one-year-old plants are preferred by most grapegrowers. Dig the first Summer the young vines are laid out and kept clean of weeds, and the center around which the roots are spread when planting, and then filled up with surface soil. Then the stake is put back again near to the plant. Healthy, well-rooted one-year-old plants are preferred by most grapegrowers. Dig the first Summer the young vines are laid out and kept clean of weeds, and the center around which the roots are spread when planting, and then filled up with surface soil. Then the stake is put back again near to the plant. Healthy, well-rooted one-year-old plants are preferred by most grapegrowers. Dig the first Summer the young vines are laid out and kept clean of weeds, and the center around which the roots are spread when planting, and then filled up with surface soil. Then the stake is put back again near to the plant. Healthy, well-rooted one-year-old plants are preferred by most grapegrowers. Dig the first Summer the young vines are laid out and kept clean of weeds, and the center around which the roots are spread when planting, and then filled up with surface soil. Then the stake is put back again near to the plant. Healthy, well-rooted one-year-old plants are preferred by most grapegrowers. Dig the first Summer the young vines are laid out and kept clean of weeds, and the center around which the roots are spread when planting, and then filled up with surface soil. Then the stake is put back again near to the plant. Healthy, well-rooted one-year-old plants are preferred by most grapegrowers. Dig the first Summer the young vines are laid out and kept clean of weeds, and the center around which the roots are spread when planting, and then filled up with surface soil. Then the stake is put back again near to the plant. Healthy, well-rooted one-year-old plants are preferred by most grapegrowers. Dig the first Summer the young vines are laid out and kept clean of weeds, and the center around which the roots are spread when planting, and then filled up with surface soil. Then the stake is put back again near to the plant. Healthy, well-rooted one-year-old plants are preferred by most grapegrowers. Dig the first Summer the young vines are laid out and kept clean of weeds, and the center around which the roots are spread when planting, and then filled up with surface soil. Then the stake is put back again near to the plant. Healthy, well-rooted one-year-old plants are preferred by most grapegrowers. Dig the first Summer the young vines are laid out and kept clean of weeds, and the center around which the roots are spread when planting, and then filled up with surface soil. Then the stake is put back again near to the plant. Healthy, well-rooted one-year-old plants are preferred by most grapegrowers. Dig the first Summer the young vines are laid out and kept clean of weeds, and the center around which the roots are spread when planting, and then filled up with surface soil. Then the stake is put back again near to the plant. Healthy, well-rooted one-year-old plants are preferred by most grapegrowers. Dig the first Summer the young vines are laid out and kept clean of weeds, and the center around which the roots are spread when planting, and then filled up with surface soil. Then the stake is put back again near to the plant. Healthy, well-rooted one-year-old plants are preferred by most grapegrowers. Dig the first Summer the young vines are laid out and kept clean of weeds, and the center around which the roots are spread when planting, and then filled up with surface soil. Then the stake is put back again near to the plant. Healthy, well-rooted one-year-old plants are preferred by most grapegrowers. Dig the first Summer the young vines are laid out and kept clean of weeds, and the center around which the roots are spread when planting, and then filled up with surface soil. Then the stake is put back again near to the plant. Healthy, well-rooted one-year-old plants are preferred by most grapegrowers. Dig the first Summer the young vines are laid out and kept clean of weeds, and the center around which the roots are spread when planting, and then filled up with surface soil. Then the stake is put back again near to the plant. Healthy, well-rooted one-year-old plants are preferred by most grapegrowers. Dig the first Summer the young vines are laid out and kept clean of weeds, and the center around which the roots are spread when planting, and then filled up with surface soil. Then the stake is put back again near to the plant. Healthy, well-rooted one-year-old plants are preferred by most grapegrowers. Dig the first Summer the young vines are laid out and kept clean of weeds, and the center around which the roots are spread when planting, and then filled up with surface soil. Then the stake is put back again near to the plant. Healthy, well-rooted one-year-old plants are preferred by most grapegrowers. Dig the first Summer the young vines are laid out and kept clean of weeds, and the center around which the roots are spread when planting, and then filled up with surface soil. Then the stake is put back again near to the plant. Healthy, well-rooted one-year-old plants are preferred by most grapegrowers. Dig the first Summer the young vines are laid out and kept clean of weeds, and the center around which the roots are spread when planting, and then filled up with surface soil. Then the stake is put back again near to the plant. Healthy, well-rooted one-year-old plants are preferred by most grapegrowers. Dig the first Summer the young vines are laid out and kept clean of weeds, and the center around which the roots are spread when planting, and then filled up with surface soil. Then the stake is put back again near to the plant. Healthy, well-rooted one-year-old plants are preferred by most grapegrowers. Dig the first Summer the young vines are laid out and kept clean of weeds, and the center around which the roots are spread when planting, and then filled up with surface soil. Then the stake is put back again near to the plant. Healthy, well-rooted one-year-old plants are preferred by most grapegrowers. Dig the first Summer the young vines are laid out and kept clean of weeds, and the center around which the roots are spread when planting, and then filled up with surface soil. Then the stake is put back again near to the plant. Healthy, well-rooted one-year-old plants are preferred by most grapegrowers. Dig the first Summer the young vines are laid out and kept clean of weeds, and the center around which the roots are spread when planting, and then filled up with surface soil. Then the stake is put back again near to the plant. Healthy, well-rooted one-year-old plants are preferred by most grapegrowers. Dig the first Summer the young vines are laid out and kept clean of weeds, and the center around which the roots are spread when planting, and then filled up with surface soil. Then the stake is put back again near to the plant. Healthy, well-rooted one-year-old plants are preferred by most grapegrowers. Dig the first Summer the young vines are laid out and kept clean of weeds, and the center around which the roots are spread when planting, and then filled up with surface soil. Then the stake is put back again near to the plant. Healthy, well-rooted one-year-old plants are preferred by most grapegrowers. Dig the first Summer the young vines are laid out and kept clean of weeds, and the center around which the roots are spread when planting, and then filled up with surface soil. Then the stake is put back again near to the plant. Healthy, well-rooted one-year-old plants are preferred by most grapegrowers. Dig the first Summer the young vines are laid out and kept clean of weeds, and the center around which the roots are spread when planting, and then filled up with surface soil. Then the stake is put back again near to the plant. Healthy, well-rooted one-year-old plants are preferred by most grapegrowers. Dig the first Summer the young vines are laid out and kept clean of weeds, and the center around which the roots are spread when planting, and then filled up with surface soil. Then the stake is put back again near to the plant. Healthy, well-rooted one-year-old plants are preferred by most grapegrowers. Dig the first Summer the young vines are laid out and kept clean of weeds, and the center around which the roots are spread when planting, and then filled up with surface soil. Then the stake is put back again near to the plant. Healthy, well-rooted one-year-old plants are preferred by most grapegrowers. Dig the first Summer the young vines are laid out and kept clean of weeds, and the center around which the roots are spread when planting, and then filled up with surface soil. Then the stake is put back again near to the plant. Healthy, well-rooted one-year-old plants are preferred by most grapegrowers. Dig the first Summer the young vines are laid out and kept clean of weeds, and the center around which the roots are spread when planting, and then filled up with surface soil. Then the stake is put back again near to the plant. Healthy, well-rooted one-year-old plants are preferred by most grapegrowers. Dig the first Summer the young vines are laid out and kept clean of weeds, and the center around which the roots are spread when planting, and then filled up with surface soil. Then the stake is put back again near to the plant. Healthy, well-rooted one-year-old plants are preferred by most grapegrowers. Dig the first Summer the young vines are laid out and kept clean of weeds, and the center around which the roots are spread when planting, and then filled up with surface soil. Then the stake is put back again near to the plant. Healthy, well-rooted one-year-old plants are preferred by most grapegrowers. Dig the first Summer the young vines are laid out and kept clean of weeds, and the center around which the roots are spread when planting, and then filled up with surface soil. Then the stake is put back again near to the plant. Healthy, well-rooted one-year-old plants are preferred by most grapegrowers. Dig the first Summer the young vines are laid out and kept clean of weeds, and the center around which the roots are spread when planting, and then filled up with surface soil. Then the stake is put back again near to the plant. Healthy, well-rooted one-year-old plants are preferred by most grapegrowers. Dig the first Summer the young vines are laid out and kept clean of weeds, and the center around which the roots are spread when planting, and then filled up with surface soil. Then the stake is put back again near to the plant. Healthy, well-rooted one-year-old plants are preferred by most grapegrowers. Dig the first Summer the young vines are laid out and kept clean of weeds, and the center around which the roots are spread when planting, and then filled up with surface soil. Then the stake is put back again near to the plant. Healthy, well-rooted one-year-old plants are preferred by most grapegrowers. Dig the first Summer the young vines are laid out and kept clean of weeds, and the center around which the roots are spread when planting, and then filled up with surface soil. Then the stake is put back again near to the plant. Healthy, well-rooted one-year-old plants are preferred by most grapegrowers. Dig the first Summer the young vines are laid out and kept clean of weeds, and the center around which the roots are spread when planting, and then filled up with surface soil. Then the stake is put back again near to the plant. Healthy, well-rooted one-year-old plants are preferred by most grapegrowers. Dig the first Summer the young vines are laid out and kept clean of weeds, and the center around which the roots are spread when planting, and then filled up with surface soil. Then the stake is put back again near to the plant. Healthy, well-rooted one-year-old plants are preferred by most grapegrowers. Dig the first Summer the young vines are laid out and kept clean of weeds, and the center around which the roots are spread when planting, and then filled up with surface soil. Then the stake is put back again near to the plant. Healthy, well-rooted one-year-old plants are preferred by most grapegrowers. Dig the first Summer the young vines are laid out and kept clean of weeds, and the center around which the roots are spread when planting, and then filled up with surface soil. Then the stake is put back again near to the plant. Healthy, well-rooted one-year-old plants are preferred by most grapegrowers. Dig the first Summer the young vines are laid out and kept clean of weeds, and the center around which the roots are spread when planting, and then filled up with surface soil. Then the stake is put back again near to the plant. Healthy, well-rooted one-year-old plants are preferred by most grapegrowers. Dig the first Summer the young vines are laid out and kept clean of weeds, and the center around which the roots are spread when planting, and then filled up with surface soil. Then the stake is put back again near to the plant. Healthy, well-rooted one-year-old plants are preferred by most grapegrowers. Dig the first Summer the young vines are laid out and kept clean of weeds, and the center around which the roots are spread when planting, and then filled up with surface soil. Then the stake is put back again near to the plant. Healthy, well-rooted one-year-old plants are preferred by most grapegrowers. Dig the first Summer the young vines are laid out and kept clean of weeds, and the center around which the roots are spread when planting, and then filled up with surface soil. Then the stake is put back again near to the plant. Healthy, well-rooted one-year-old plants are preferred by most grapegrowers. Dig the first Summer the young vines are laid out and kept clean of weeds, and the center around which the roots are spread when planting, and then filled up with surface soil. Then the stake is put back again near to the plant. Healthy, well-rooted one-year-old plants are preferred by most grapegrowers. Dig the first Summer the young vines are laid out and kept clean of weeds, and the center around which the roots are spread when planting, and then filled up with surface soil. Then the stake is put back again near to the plant. Healthy, well-rooted one-year-old plants are preferred by most grapegrowers. Dig the first Summer the young vines are laid out and kept clean of weeds, and the center around which the roots are spread when planting, and then filled up with surface soil. Then the stake is put back again near to the plant. Healthy, well-rooted one-year-old plants are preferred by most grapegrowers. Dig the first Summer the young vines are laid out and kept clean of weeds, and the center around which the roots are spread when planting, and then filled up with surface soil. Then the stake is put back again near to the plant. Healthy, well-rooted one-year-old plants are preferred by most grapegrowers. Dig the first Summer the young vines are laid out and kept clean of weeds, and the center around which the roots are spread when planting, and then filled up with surface soil. Then the stake is put back again near to the plant. Healthy, well-rooted one-year-old plants are preferred by most grapegrowers. Dig the first Summer the young vines are laid out and kept clean of weeds, and the center around which the roots are spread when planting, and then filled up with surface soil. Then the stake is put back again near to the plant. Healthy, well-rooted one-year-old plants are preferred by most grapegrowers. Dig the first Summer the young vines are laid out and kept clean of weeds, and the center around which the roots are spread when planting, and then filled up with surface soil. Then the stake is put back again near to the plant. Healthy, well-rooted one-year-old plants are preferred by most grapegrowers. Dig the first Summer the young vines are laid out and kept clean of weeds, and the center around which the roots are spread when planting, and then filled up with surface soil. Then the stake is put back again near to the plant. Healthy, well-rooted one-year-old plants are preferred by most grapegrowers. Dig the first Summer the young vines are laid out and kept clean of weeds, and the center around which the roots are spread when planting, and then filled up with surface soil. Then the stake is put back again near to the plant. Healthy, well-rooted one-year-old plants are preferred by most grapegrowers. Dig the first Summer the young vines are laid out and kept clean of weeds, and the center around which the roots are spread when planting, and then filled up with surface soil. Then the stake is put back again near to the plant. Healthy, well-rooted one-year-old plants are preferred by most grapegrowers. Dig the first Summer the young vines are laid out and kept clean of weeds, and the center around which the roots are spread when planting, and then filled up with surface soil. Then the stake is put back again near to the plant. Healthy, well-rooted one-year-old plants are preferred by most grapegrowers. Dig the first Summer the young vines are laid out and kept clean of weeds, and the center around which the roots are spread when planting, and then filled up with surface soil. Then the stake is put back again near to the plant. Healthy, well-rooted one-year-old plants are preferred by most grapegrowers. Dig the first Summer the young vines are laid out and kept clean of weeds, and the center around which the roots are spread when planting, and then filled up with surface soil. Then the stake is put back again near to the plant. Healthy, well-rooted one-year-old plants are preferred by most grapegrowers. Dig the first Summer the young vines are laid out and kept clean of weeds, and the center around which the roots are spread when planting, and then filled up with surface soil. Then the stake is put back again near to the plant. Healthy, well-rooted one-year-old plants are preferred by most grapegrowers. Dig the first Summer the young vines are laid out and kept clean of weeds, and the center around which the roots are spread when planting, and then filled up with surface soil. Then the stake is put back again near to the plant. Healthy, well-rooted one-year-old plants are preferred by most grapegrowers. Dig the first Summer the young vines are laid out and kept clean of weeds, and the center around which the roots are spread when planting, and then filled up with surface soil. Then the stake is put back again near to the plant. Healthy, well-rooted one-year-old plants are preferred by most grapegrowers. Dig the first Summer the young vines are laid out and kept clean of weeds, and the center around which the roots are spread when planting, and then filled up with surface soil. Then the stake is put back again near to the plant. Healthy, well-rooted one-year-old plants are preferred by most grapegrowers. Dig the first Summer the young vines are laid out and kept clean of weeds, and the center around which the roots are spread when planting, and then filled up with surface soil. Then the stake is put back again near to the plant. Healthy, well-rooted one-year-old plants are preferred by most grapegrowers. Dig the first Summer the young vines are laid out and kept clean of weeds, and the center around which the roots are spread when planting, and then filled up with surface soil. Then the stake is put back again near to the plant. Healthy, well-rooted one-year-old plants are preferred by most grapegrowers. Dig the first Summer the young vines are laid out and kept clean of weeds, and the center around which the roots are spread when planting, and then filled up with surface soil. Then the stake is put back again near to the plant. Healthy, well-rooted one-year-old plants are preferred by most grapegrowers. Dig the first Summer the young vines are laid out and kept clean of weeds, and the center around which the roots are spread when planting, and then filled up with surface soil. Then the stake is put back again near to the plant. Healthy, well-rooted one-year-old plants are preferred by most grapegrowers. Dig the first Summer the young vines are laid out and kept clean of weeds, and the center around which the roots are spread when planting, and then filled up with surface soil. Then the stake is put back again near to the plant. Healthy, well-rooted one-year-old plants are preferred by most grapegrowers. Dig the first Summer the young vines are laid out and kept clean of weeds, and the center around which the roots are spread when planting, and then filled up with surface soil. Then the stake is put back again near to the plant. Healthy, well-rooted one-year-old plants are preferred by most grapegrowers. Dig the first Summer the young vines are laid out and kept clean of weeds, and the center around which the roots are spread when planting, and then filled up with surface soil. Then the stake is put back again near to the plant. Healthy, well-rooted one-year-old plants are preferred by most grapegrowers. Dig the first Summer the young vines are laid out and kept clean of weeds, and the center around which the roots are spread when planting, and then filled up with surface soil. Then the stake is put back again near to the plant. Healthy, well-rooted one-year-old plants are preferred by most grapegrowers. Dig the first Summer the young vines are laid out and kept clean of weeds, and the center around which the roots are spread when planting, and then filled up with surface soil. Then the stake is put back again near to the plant. Healthy, well-rooted one-year-old plants are preferred by most grapegrowers. Dig the first Summer the young vines are laid out and kept clean of weeds, and the center around which the roots are spread when planting, and then filled up with surface soil. Then the stake is put back again near to the plant. Healthy, well-rooted one-year-old plants are preferred by most grapegrowers. Dig the first Summer the young vines are laid out and kept clean of weeds, and the center around which the roots are spread when planting, and then filled up with surface soil. Then the stake is put back again near to the plant. Healthy, well-rooted one-year-old plants are preferred by most grapegrowers. Dig the first Summer the young vines are laid out and kept clean of weeds, and the center around which the roots are spread when planting, and then filled up with surface soil. Then the stake is put back again near to the plant. Healthy, well-rooted one-year-old plants are preferred by most grapegrowers. Dig the first Summer the young vines are laid out and kept clean of weeds, and the center around which the roots are spread when planting, and then filled up with surface soil. Then the stake is put back again near to the plant. Healthy, well-rooted one-year-old plants are preferred by most grapegrowers. Dig the first Summer the young vines are laid out and kept clean of weeds, and the center around which the roots are spread when planting, and then filled up with surface soil. Then the stake is put back again near to the plant. Healthy, well-rooted one-year-old plants are preferred by most grapegrowers. Dig the first Summer the young vines are laid out and kept clean of weeds, and the center around which the roots are spread when planting, and then filled up with surface soil. Then the stake is put back again near to the plant. Healthy, well-rooted one-year-old plants are preferred by most grapegrowers. Dig the first Summer the young vines are laid out and kept clean of weeds, and the center around which the roots are spread when planting, and then filled up with surface soil. Then the stake is put back again near to the plant. Healthy, well-rooted one-year-old plants are preferred by most grapegrowers. Dig the first Summer the young vines are laid out and kept clean of weeds, and the center around which the roots are spread when planting, and then filled up with surface soil. Then the stake is put back again near to the plant. Healthy, well-rooted one-year-old plants are preferred by most grapegrowers. Dig the first Summer the young vines are laid out and kept clean of weeds, and the center around which the roots are spread when planting, and then filled up with surface soil. Then the stake is put back again near to the plant. Healthy, well-rooted one-year-old plants are preferred by most grapegrowers. Dig the first Summer the young vines are laid out and kept clean of weeds, and the center around which the roots are spread when planting, and then filled up with surface soil. Then the stake is put back again near to the plant. Healthy, well-rooted one-year-old plants are preferred by most grapegrowers. Dig the first Summer the young vines are laid out and kept clean of weeds, and the center around which the roots are spread when planting, and then filled up with surface soil. Then the stake is put back again near to the plant. Healthy, well-rooted one-year-old plants are preferred by most grapegrowers. Dig the first Summer the young vines are laid out and kept clean of weeds, and the center around which the roots are spread when planting, and then filled up with surface soil. Then the stake is put back again near to the plant. Healthy, well-rooted one-year-old plants are preferred by most grapegrowers. Dig the first Summer the young vines are laid out and kept clean of weeds, and the center around which the roots are spread when planting, and then filled up with surface soil. Then the stake is put back again near to the plant. Healthy, well-rooted one-year-old plants are preferred by most grapegrowers. Dig the first Summer the young vines are laid out and kept clean of weeds, and the center around which the roots are spread when planting, and then filled up with surface soil. Then the stake is put back again near to the plant. Healthy, well-rooted one-year-old plants are preferred by most grapegrowers. Dig the first Summer the young vines are laid out and kept clean of weeds, and the center around which the roots are spread when planting, and then filled up with surface soil. Then the stake is put back again near to the plant. Healthy, well-rooted one-year-old plants are preferred by most grapegrowers. Dig the first Summer the young vines are laid out and kept clean of weeds, and the center around which the roots are spread when planting, and then filled up with surface soil. Then the stake is put back again near to the plant. Healthy, well-rooted one-year-old plants are preferred by most grapegrowers. Dig the first Summer the young vines are laid out and kept clean of weeds, and the center around which the roots are spread when planting, and then filled up with surface soil. Then the stake is put back again near to the plant. Healthy, well-rooted one-year-old plants are preferred by most grapegrowers. Dig the first Summer the young vines are laid out and kept clean of weeds, and the center around which the roots are spread when planting, and then filled up with surface soil. Then the stake is put back again near to the plant. Healthy, well-rooted one-year-old plants are preferred by most grapegrowers. Dig the first Summer the young vines are laid out and kept clean of weeds, and the center around which the roots are spread when planting, and then filled up with surface soil. Then the stake is put back again near to the plant. Healthy, well-rooted one-year-old plants are preferred by most grapegrowers. Dig the first Summer the young vines are laid out and kept clean of weeds, and the center around which the roots are spread when planting, and then filled up with surface soil. Then the stake is put back again near to the plant. Healthy, well-rooted one-year-old plants are preferred by most grapegrowers. Dig the first Summer the young vines are laid out and kept clean of weeds, and the center around which the roots are spread when planting, and then filled up with surface soil. Then the stake is put back again near to the plant. Healthy, well-rooted one-year-old plants are preferred by most grapegrowers. Dig the first Summer the young vines are laid out and kept clean of weeds, and the center around which the roots are spread when planting, and then filled up with surface soil. Then the stake is put back again near to the plant. Healthy, well-rooted one-year-old plants are preferred by most grapegrowers. Dig the first Summer the young vines are laid out and kept clean of weeds, and the center around which the roots are spread when planting, and then filled up with surface soil. Then the stake is put back again near to the plant. Healthy, well-rooted one-year-old plants are preferred by most grapegrowers. Dig the first Summer the young vines are laid out and kept clean of weeds, and the center around which the roots are spread when planting, and then filled up with surface soil. Then the stake is put back again near to the plant. Healthy, well-rooted one-year-old plants are preferred by most grapegrowers. Dig the first Summer the young vines are laid out and kept clean of weeds, and the center around which the roots are spread when