

CASCADES TO SNAKE RIVER

Middle Oregon a Region of Great Possibilities If Put Under Irrigation—Stockraising Is the Principal Industry.

THIS presentation of facts here to follow will cover a region not so well known in the State of Oregon as it should be. It comprises the major portion of the four counties of Linn, Crook, Harney and Malheur.

Taking up the eastern portion of Linn County, it can be truthfully stated that there is no more productive or fruitful region within the confines of the State of Oregon.

The variety of crops, the enormous yields, the certainty of a profit, to say nothing of the climate, which is superb, present this as one of the most attractive regions of our great state.

When the foothills are reached here is found abundant timber capable of being turned into superb lumber.

The timber resources of eastern Linn County are practically inexhaustible and it will be centuries before a full demand for the supply will be made.

One of the industries of Linn County is the raising and marketing of hops. This has grown rapidly, and affords a large profit to the growers.

A very notable feature of Linn County is the number of flouring mills located in its different sections. They are all of large capacity, and turn out a very superior article.

Another peculiar industry which has been brought into prominence is that of grape root, also used for medicinal purposes.

that development has not been encouraged or thought to be profitable. During 1898 and 1899 samples of ore brought from the mines showed astonishing richness.

The population of Crook County is rapidly increasing, and is now estimated at 7500. The encouragement given the production of alfalfa and wheat within the last year and a half has increased the acreage of cultivation from 37,000 to 45,000 acres.

The erection of mills in the county with the latest appliances has increased the production of wheat. This wheat is of superior quality, generally known as "chickie" club, a hard white wheat resulting in a flour of great nutriment, and containing a high percentage of gluten.

Increased production of alfalfa has had a remarkable effect upon the output. One of the most remarkable increases in production of this county was in the line of butter and cheese.

Within the past few years the production of alfalfa in the valleys has been largely increased by the results obtained. Cattle fatten upon this product in an astounding manner, and reach the point of shipment in excellent condition.

Crook County has an industry which has made a large number of its citizens wealthy, and is in the line of sheep and wool. The production of wool in 1900 was 2,500,000 pounds, and in 1901 it reached the astonishing figure of 4,320,000 pounds.

The timber resources of eastern Linn County are practically inexhaustible and it will be centuries before a full demand for the supply will be made.

One of the industries of Linn County is the raising and marketing of hops. This has grown rapidly, and affords a large profit to the growers.

surprising rate. The county affords not only good Summer ranges, but also Winter ranges, and ample protection for ewes and lambs.

The increase in the production of alfalfa has been followed by remarkable increase in the number of horses in Crook County, and that has amounted in the last year to at least 25 per cent.

From 1895 to 1901 the demand for horses lessened materially, but since that time the prices for horses have risen to a great increase in the product.

The first county east of Crook is Harney, called after General Harney, who during the several Indian wars made himself famous by his victories over the aborigines of the region.

The erection of new mills in Crook County has increased the lumber output largely. This is notable in view of the fact that the county contains very little timber, with the exception of that on the east slope of the Cascade Mountains.

Crook County has an industry which has made a large number of its citizens wealthy, and is in the line of sheep and wool. The production of wool in 1900 was 2,500,000 pounds, and in 1901 it reached the astonishing figure of 4,320,000 pounds.

The timber resources of eastern Linn County are practically inexhaustible and it will be centuries before a full demand for the supply will be made.

One of the industries of Linn County is the raising and marketing of hops. This has grown rapidly, and affords a large profit to the growers.

timber is clean and free, easily milled and worked, without knot or other defect. Leaving the mountains, which have a small elevation, an immense expanse of valley is reached, known as Silver Creek Valley, through which runs the stream bearing the name of Silver Creek.

The soil is remarkably fertile, and capable of producing almost anything that an intelligent farmer finds it to his advantage to raise.

Running south through the center of the valley glimmers and glistens Silver River, having its source in the Blue Mountains, and after running about 53 or 54 miles empties into Malheur Lake.

The principal town in the lower valley is Ontario, situated on the banks of the Snake River. It is the main shipping point on the Oregon Short Line, draining Harney and Malheur Counties.

Large buildings used for mercantile purposes have been erected. A hotel equal to any of the lower valley has been opened. Ontario is the headquarters of one of the best conducted fruit ranches in the state.

The United States Land Office for the Walla Walla district reports that for the year ending June 30, 1901, it issued certificates for 1646 homesteads, covering 252,797 acres.

There are in Adams County 64,374 acres of surveyed land, open for settlement; in Astoria County, 10,312 acres of surveyed and 53,224 acres open for settlement; in Columbia County there are 16,023 acres of surveyed and 174,425 of unsurveyed lands, the latter most of them in the Blue Mountains; in Franklin County there are 210,537 acres, in Walla Walla 48,915 acres, in Whitman 14,461 acres, and in Yakima 88,461 acres of surveyed lands open to settlement.

The most striking fact about the Lewis and Clark Exposition, planned for Portland in 1905, is the enthusiastic reception it has received from all the neighbor states, even as far east as Colorado and Montana.

far ahead of many others located nearer the railroads. Some of the residences would do credit to any city on the Pacific Coast. The Courthouse is a very fine building, and was erected eight years ago.

Malheur County, although having a name indicating anything but prosperity, was wrongfully given that designation. It is one of the most prosperous counties in Oregon, and has made great strides within the last 10 years.

Malheur County, although having a name indicating anything but prosperity, was wrongfully given that designation. It is one of the most prosperous counties in Oregon, and has made great strides within the last 10 years.

Large buildings used for mercantile purposes have been erected. A hotel equal to any of the lower valley has been opened. Ontario is the headquarters of one of the best conducted fruit ranches in the state.

The United States Land Office for the Walla Walla district reports that for the year ending June 30, 1901, it issued certificates for 1646 homesteads, covering 252,797 acres.

There are in Adams County 64,374 acres of surveyed land, open for settlement; in Astoria County, 10,312 acres of surveyed and 53,224 acres open for settlement; in Columbia County there are 16,023 acres of surveyed and 174,425 of unsurveyed lands, the latter most of them in the Blue Mountains; in Franklin County there are 210,537 acres, in Walla Walla 48,915 acres, in Whitman 14,461 acres, and in Yakima 88,461 acres of surveyed lands open to settlement.

The most striking fact about the Lewis and Clark Exposition, planned for Portland in 1905, is the enthusiastic reception it has received from all the neighbor states, even as far east as Colorado and Montana.

The most striking fact about the Lewis and Clark Exposition, planned for Portland in 1905, is the enthusiastic reception it has received from all the neighbor states, even as far east as Colorado and Montana.

RARE SPORT IN KLAMATH COUNTY

Mullet Emerge From Tule Lake in the Spring of the Year and Head for Lost River, Affording Excellent Fishing for Sportsmen.

PLEASURE-SEEKING tourists, in growing numbers, confirm Klamath County's claim to distinction as the "sportsman's paradise." Fishing in Lost River, to be briefly treated here, is perhaps as interesting as the more expert sport of angling for the fine varieties of trout which abound in our lakes and mountain streams.

This Springtime diversion is an especially important period in the lives of the Indians, who, in accordance with an annual pilgrimage to the river and dry this particular kind of fish for use the balance of the year.

Large buildings used for mercantile purposes have been erected. A hotel equal to any of the lower valley has been opened. Ontario is the headquarters of one of the best conducted fruit ranches in the state.

The United States Land Office for the Walla Walla district reports that for the year ending June 30, 1901, it issued certificates for 1646 homesteads, covering 252,797 acres.

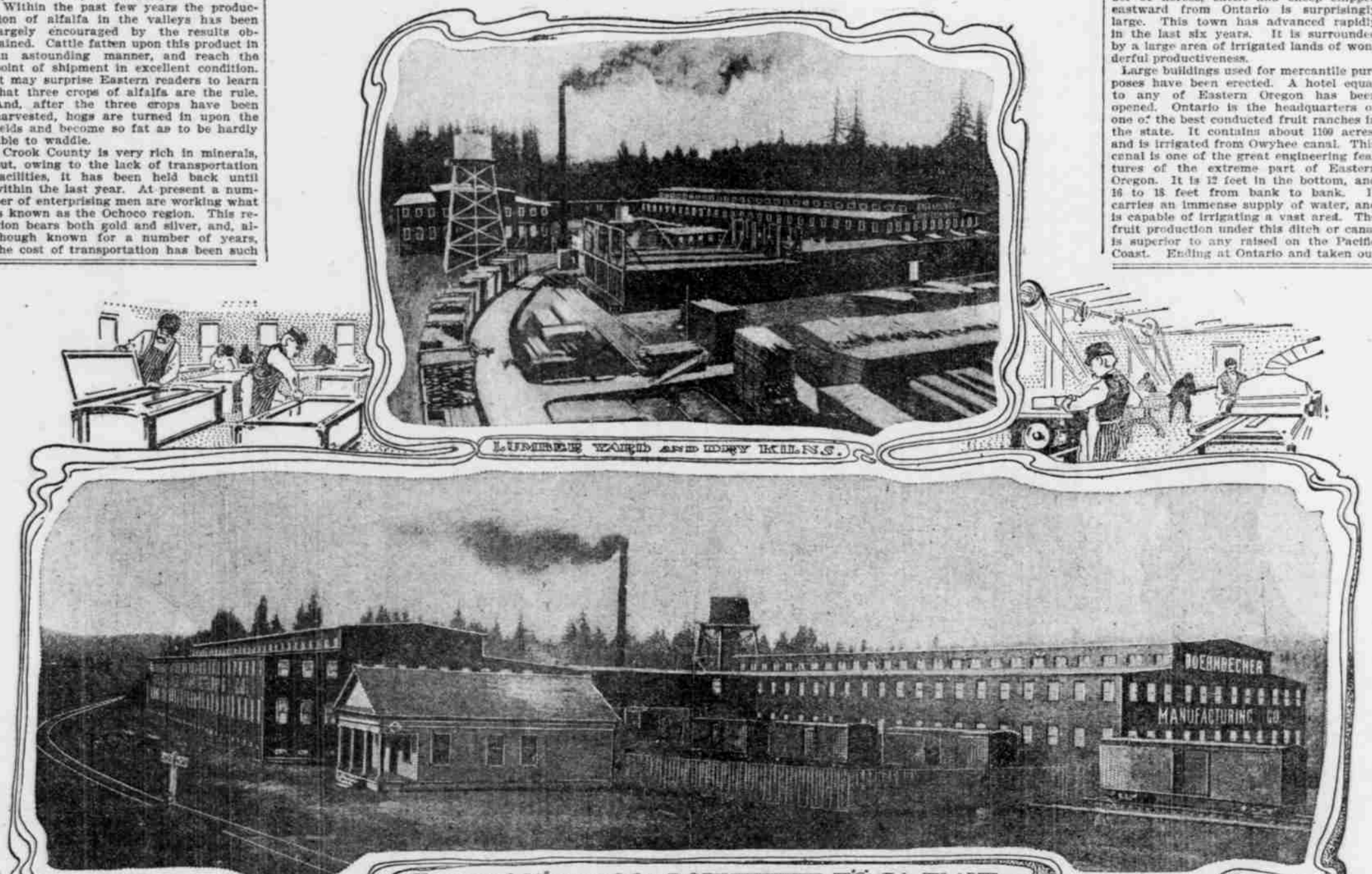
There are in Adams County 64,374 acres of surveyed land, open for settlement; in Astoria County, 10,312 acres of surveyed and 53,224 acres open for settlement; in Columbia County there are 16,023 acres of surveyed and 174,425 of unsurveyed lands, the latter most of them in the Blue Mountains; in Franklin County there are 210,537 acres, in Walla Walla 48,915 acres, in Whitman 14,461 acres, and in Yakima 88,461 acres of surveyed lands open to settlement.

The most striking fact about the Lewis and Clark Exposition, planned for Portland in 1905, is the enthusiastic reception it has received from all the neighbor states, even as far east as Colorado and Montana.

OREGON MANUFACTURES ACCORDING TO UNITED STATES CENSUS REPORT FOR 1900.

Table with multiple columns: Capital, Salaried officials, Average No. wage-earners, Average No. wage-earners continued, Miscellaneous expenses, Cost of materials used, Value of product, finished, and unfinished. Rows list various manufacturing industries like Baker, Jackman, Clatsop, etc.

A BIG MANUFACTURING PLANT.



General View of the DOERNBECHER MFG. CO'S PLANT.

The Doernbecher Manufacturing Company of this city from Washington. But little is left, as a matter of fact, of the Washington concern. Practically all is an entirely new plant.