

WATER WORKING UNDER SUFFICIENT HEAD TO BORE THROUGH SOLID ROCK



OPENING A NEW PLACER MINE

The rich placer deposits of Southern Oregon. These mines have been successfully worked for nearly half a century; and they still rank among the greatest producers of placer gold in the United States.

—FROM PHOTOS FURNISHED BY THE DAY BROTHERS, OF PORTLAND.



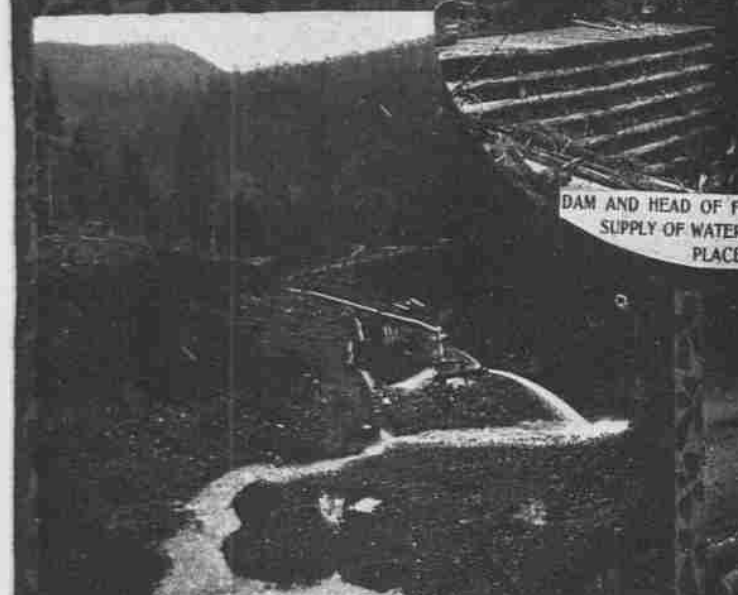
FREIGHTING HEAVY MACHINERY OVER MOUNTAIN TRAIL TO NEW AND RICH GOLD-QUARTZ FIELD OF THE BOHEMIA MINING DISTRICT, EAST OF EUGENE AND COTTAGE GROVE, OR.

—Photo furnished by J. B. Hammond Co., Portland

Oregon is destined to become one of the great mining states of the Union. Already its annual production of gold approximates \$4,000,000 and this total will steadily increase from now on.



BAKER CITY, THE MINING CENTER OF EASTERN OREGON



DAM AND HEAD OF FLUME WHICH FURNISHES SUPPLY OF WATER FOR WASHING OUT PLACER GOLD



TWO 8-INCH GIANTS PLAYING ON A 40-FOOT BANK OF GRAVEL



HIGH TRESTLE WHICH SUPPORTS FLUME CARRYING WATER TO A PLACER MINE



SUMPTER, SHOWING WORKED-OUT PLACER FIELD IN FOREGROUND



A PLACER CLAIM, SHOWING DISCHARGE OF WATER WHICH CARRIES THE GOLD-BEARING GRAVEL FOR THE "CLEAN-UP"

Entire Hills Are Washed Away in the Search for Gold

In Western Oregon the principal gold fields are the Santiam district in Linn county, the Bohemia district in Lane and Douglas, and the placers and quartz districts of Douglas, Jackson, Josephine, Coos and Curry. Vast capital has been invested in Oregon mines during the past two years. American, English and French investors are reaching out for every good mine in Eastern Oregon gold belt. Outside capital is also finding its way into Western Oregon mines. It is the producing mine or the one which tests have shown to be rich that attracts capital. This fact explains recent heavy investments in Oregon mines by Portland, Spokane, New York, Butte, Salt Lake, Wyoming and foreign capitalists. Experience having proved that Oregon's mines are rich and permanent, an era of extensive development is close at hand. It will not be many years before the annual gold production of the state will be \$10,000,000, perhaps \$20,000,000.



A WELL-DEVELOPED PLACER CLAIM



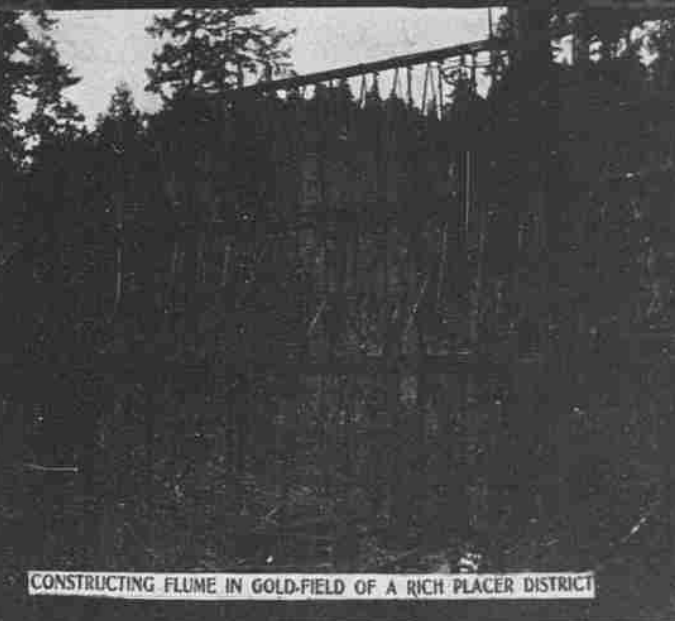
IN BAISLEY-ELKHORN MINING DISTRICT. THE MINES OF THIS DISTRICT ARE AMONG THE GREATEST GOLD-PRODUCERS OF THE WORLD



A FAMOUS GOLD-QUARTZ MINE AT GRANITE EASTERN OREGON MINES, IN VICINITY OF BAKER CITY

—PHOTO FURNISHED BY R. T. PARKER, BAKER CITY

By far the greatest development has taken place in the Eastern Oregon gold belt, comprising Baker, Grant and Union counties. They are not the only mineral counties in the Eastern section. Crook has mines from which good reports are received and there seems to be no doubt that they will make a fine showing in the near future. Umatilla, Malheur, Harney and other counties also yield more or less gold.



CONSTRUCTING FLUME IN GOLD-FIELD OF A RICH PLACER DISTRICT