



**John M. Rodgers**  
Assistant Cashier

**George H. Shinn**  
Chief Deputy Collector

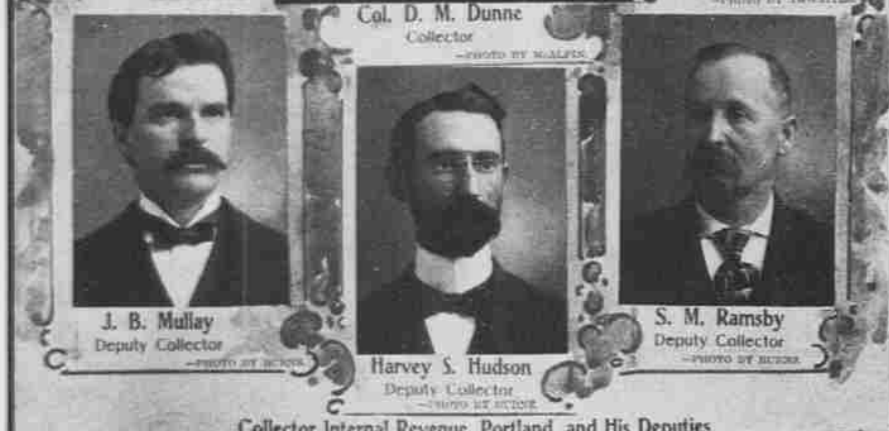
**Samuel Lotan**  
Cashier and Deputy Collector



**Charles Holman**  
Deputy Collector, Division No. 1

**Col. D. M. Dunne**  
Collector

**John W. Minto**  
Deputy Collector, Division No. 2



**J. B. Mullay**  
Deputy Collector

**Harvey S. Hudson**  
Deputy Collector

**S. M. Ramsby**  
Deputy Collector

Collector Internal Revenue, Portland, and His Deputies



**TATUM & BOWEN, Machinery**  
PORTLAND SAN FRANCISCO SEATTLE



Residence of Frank Hachney, 940 Corbett St., South Portland



Residence of E. C. Bronaugh, Jr., 965 Front St., South Portland



Residence of Mrs. E. C. Bronaugh, Sr., 961 Front St., South Portland



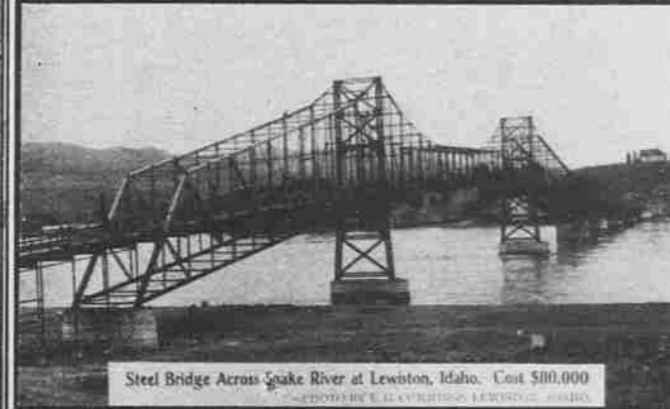
Block House Near Centralia, Wash. Built in 1849



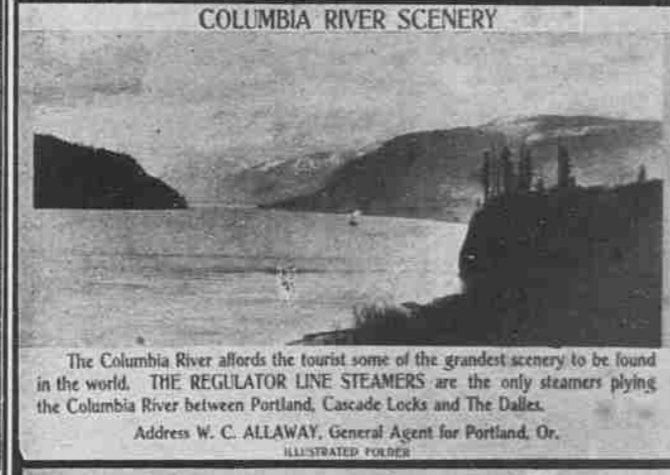
New Benedictine Monastery and College of Mt. Angel, Oregon



New Sawmill of E. S. Collins, at Ostrander, Wash.

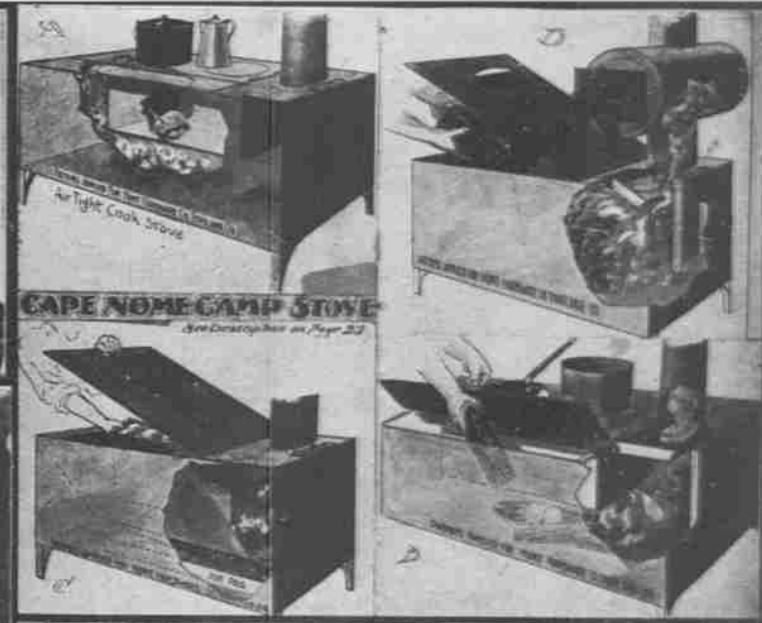


Steel Bridge Across Snake River at Lewiston, Idaho. Cost \$100,000



COLUMBIA RIVER SCENERY

The Columbia River affords the tourist some of the grandest scenery to be found in the world. THE REGULATOR LINE STEAMERS are the only steamers plying the Columbia River between Portland, Cascade Locks and The Dalles. Address W. C. ALLAWAY, General Agent for Portland, Or. ILLUSTRATED FOLDER



CAPE NOME CAMP STOVE



Gustav Frenwald, President STAR BREWERY CO., VANCOUVER, WASH.



The Fredericksburg, Portland's Most Popular Music Hall



Steamboat Feeling Her Way Through Uncle Sam's White Squadron, Columbia River, Below Portland's Harbor. PHOTO FARNIER, OR.



Steamship Geo. W. Elder, Flagship of the Alaska Fleet

**Portland to Cape Nome, Alaska.**  
Commencing May 15 next (the open season in Alaska), elegantly appointed steamships will leave Portland every ten days for Cape Nome, St. Michael's, York and Yukon river points.



Aberdeen, Gray's Harbor, Wash.