



the wheels of numerous factories in Portland is all transmitted by this Company from Oregon City to the metropolis of the Pacific Northwest. This was the first electrical long-distance plant completed in the world. Next to Niagara, Willamette Falls furnish the largest available water-power in the United States.



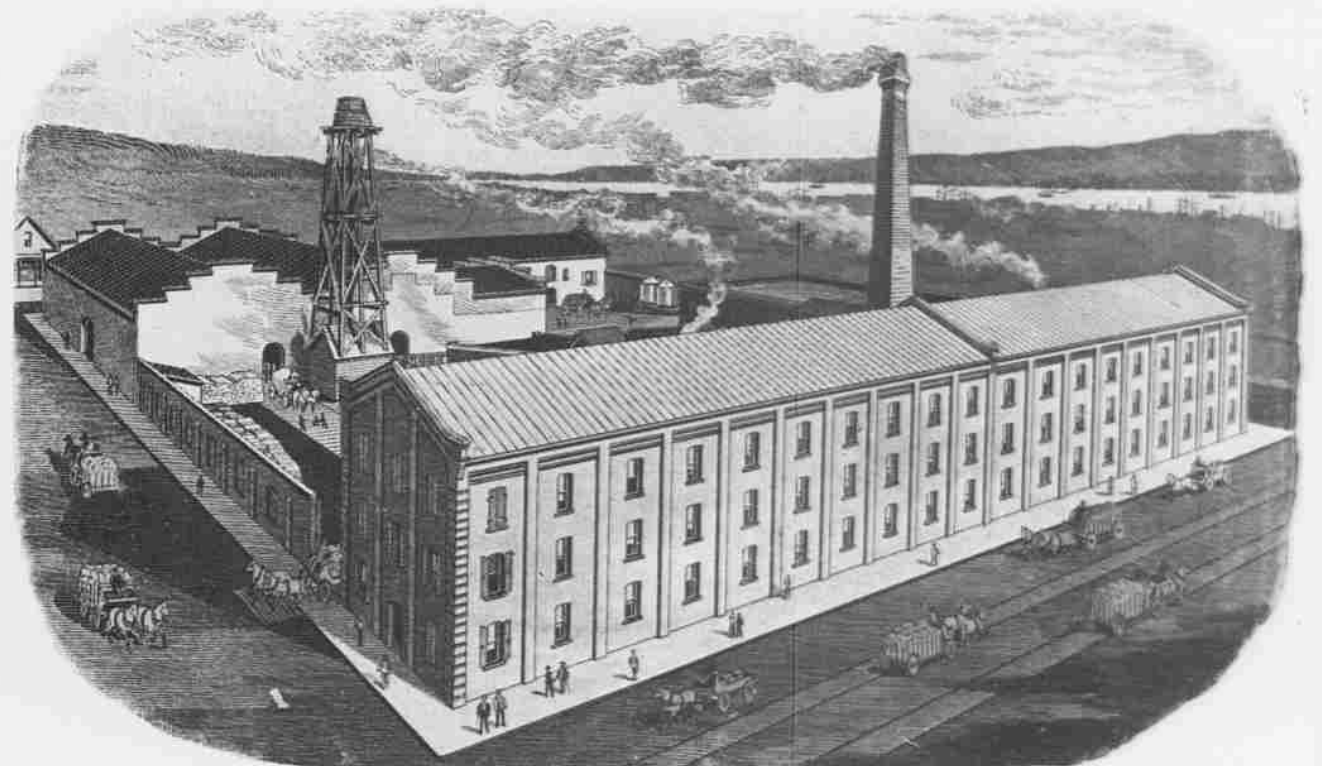
THE LARGEST STORE ON THE PACIFIC COAST, entire Building owned, occupied and used for Mercantile Purposes by
MEIER & FRANK COMPANY, Fifth, Morrison and Alder Sts., Portland.



FACTORIES AT OREGON CITY - PHOTO BY HENRI A. HALE, PORTLAND, OR.



Plant of Union Laundry Co., Portland
 -PHOTO BY E. J. HICKS, PORTLAND.



Portland Cordage Co.'s Plant, Portland.