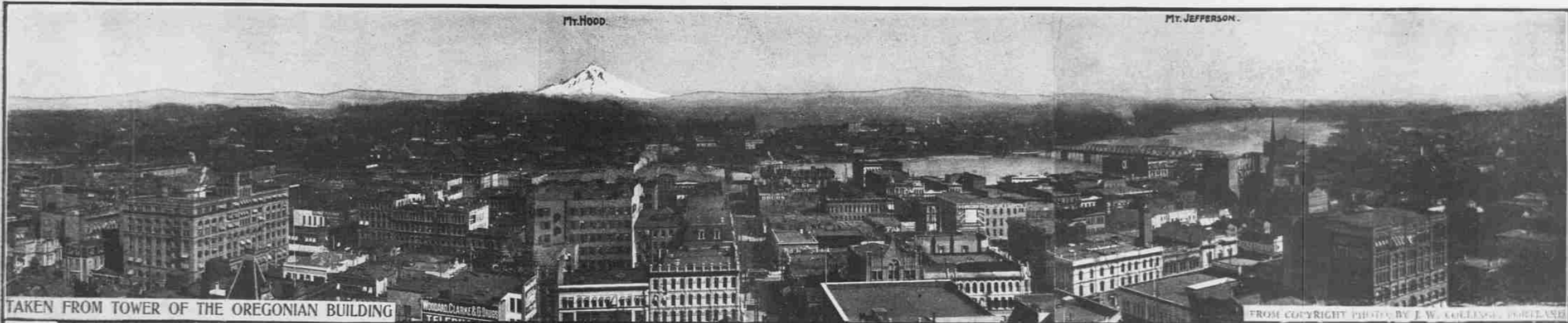


MT. HOOD.

MT. JEFFERSON.



TAKEN FROM TOWER OF THE OREGONIAN BUILDING

FROM COPYRIGHT PHOTOS BY J. W. COLLINGS, PORTLAND

The views of Whitman County shown on this page are scenes in the heart of the famous Palouse wheat belt, tapped by the lines of the Oregon Railroad & Navigation Co. The wheat raised on these lands is exported through Portland.  
—From Photos Furnished by Walter F. Burrell, Portland

The First National Bank, Portland

Photo by L. J. Hicks Portland



One of the great financial institutions of the West. The deposits of this bank now aggregate \$5,800,000 (nearly six millions of dollars). Portland's financial and commercial supremacy in the Pacific Northwest can be best appreciated after examining the statements of the First National Bank.



A Northern Pacific Transcontinental Train Entering Portland

—From Prize Copyright Photo by J. W. Collings, Portland



Threshing, Whitman County, Wash.



ISAAC BERGMAN  
Mayor of Astoria, Oregon

—PHOTO BY PAXTON, ASTORIA



Combined Header and Thresher, Whitman County, Wash.



PHOTO BY SHODGRASS, ASTORIA Astoria, Oregon, at Mouth of Columbia River, Showing Shipping District



Header and Header Wagons, Whitman County, Wash.



Winter Scene, N. P. R. R.  
Views in Coeur d'Alene Mining District, Idaho



View at Whippoorwill, Idaho



Old Mission Church, Built by Jesuit Fathers, 1843