

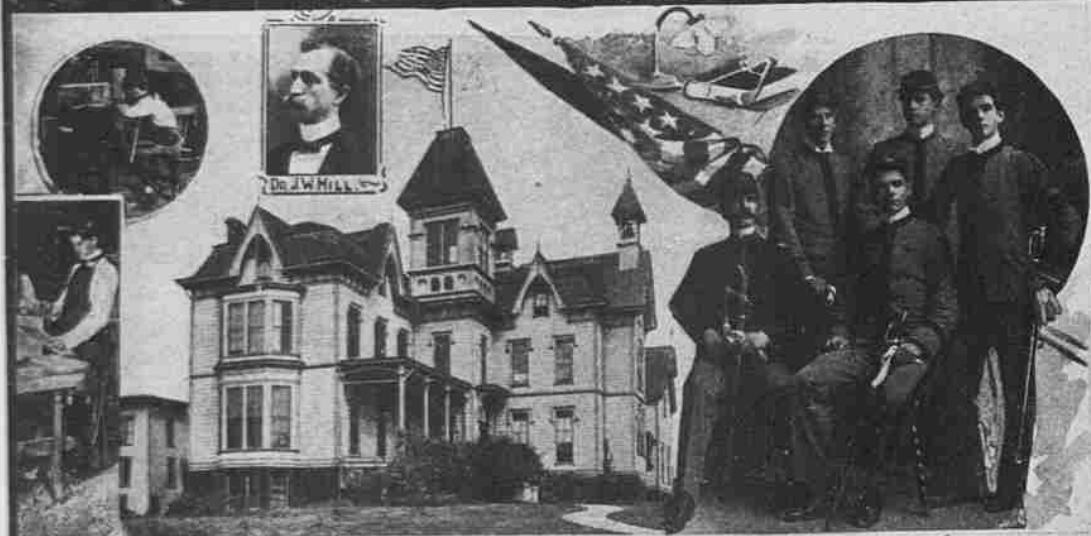
PORTLAND IS PROUD OF ITS FINE CHURCHES AND SCHOOLS—AND OF THE ARCHITECTURE OF ITS PUBLIC BUILDINGS.

MT. ST. HELENS.
MT. RAINIER

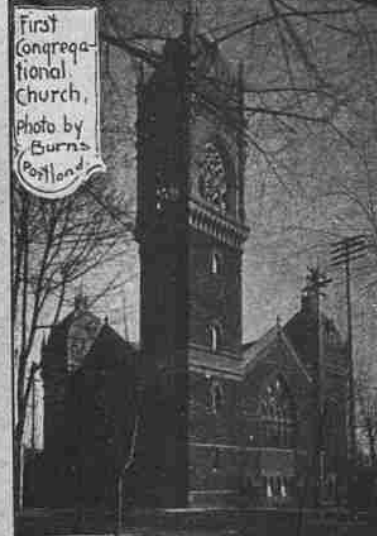
MT. ADAMS.



FULL PANORAMIC VIEW OF PORTLAND.



BISHOP SCOTT ACADEMY
Dr. J. M. Hill, Principal. Portland's Great Military and Industrial School.



First Congregational Church.
Photo by Burns Portland.



Grace Methodist Episcopal Church.
Photo by Moore Portland.



First Baptist Church.
Photo by Brown Portland.



The Synagogue.
Photo by Moore Portland.



SPAN OF STEEL BRIDGE OVER NORTH FRONT STREET, PORTLAND.

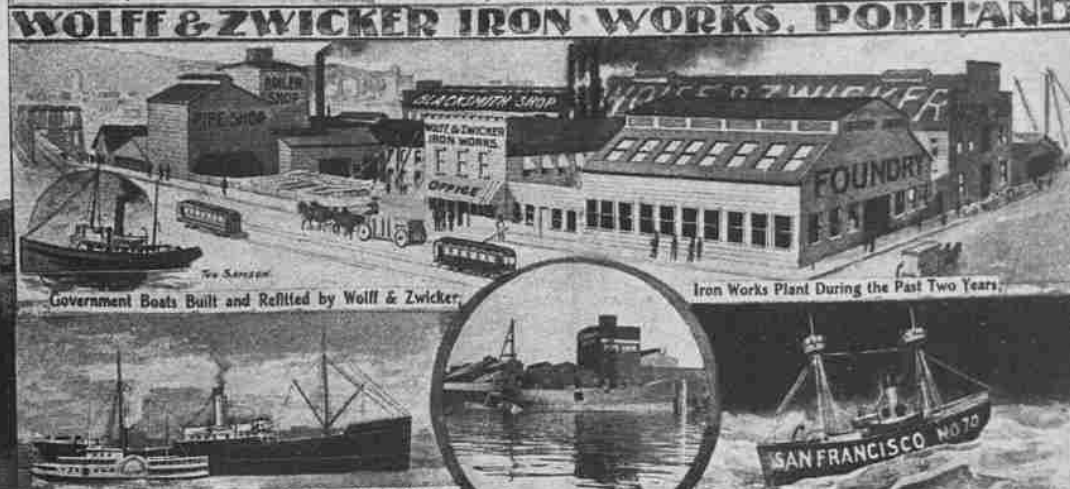


The Great Hardware House of Honeyman, DeHart & Co., Portland

—PHOTO BY L. J. HICKS, PORTLAND.



WOLFF & ZWICKER IRON WORKS, PORTLAND.



Government Torpedo Boat Fox.

Government Torpedo Boat-Destroyer Goldsborough.

Launching Government Torpedo Boat Davis.

Government Boats Built and Refitted by Wolff & Zwicker.

Iron Works Plant During the Past Two Years.

Government Transport Lennox, 5680 Tons Capacity, Refitted by Wolff & Zwicker Iron Works, for War in Philippines, October, 1899.

All the Iron Pipe for Portland's \$2,000,000 Gravelly Water Plant Was Made by This Firm. The Main Pipe Line From Headworks on Bull Run River to Portland is Nearly 40 Miles Long.



Trinity (Episcopal) Church.
Photo by Burns Portland.

Reservoir Portland Water Works, at City Park.

Union Depot of Portland.
Photo by L. J. Hicks, Portland.