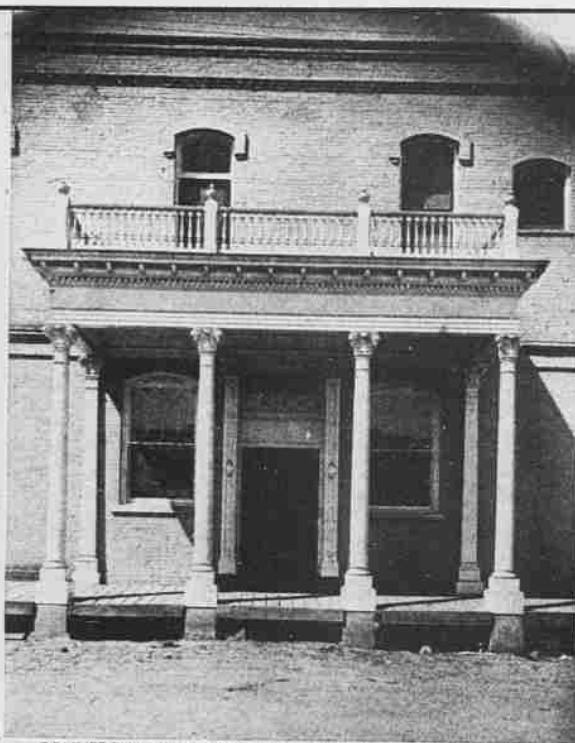




THE DALLES, OREGON, HEAD OF NAVIGATION ON THE MIDDLE COLUMBIA, AND THE GREAT SHIPPING POINT OF EASTERN OREGON

—PHOTO BY BENJ. A. GIFFORD, THE DALLES.



COMMERCIAL CLUB, THE DALLES, ONE OF THE BEST-APPOINTED CLUBHOUSES IN THE STATE



30,000 SACKS OF WHEAT (175,000 BUSHELS) IN ONE PILE, AT COLUMBUS, 23 MILES EAST OF THE DALLES, ON COLUMBIA RIVER, AWAITING SHIPMENT TO PORTLAND, BY RAIL OVER LINE OF O. R. & N. CO.



RESIDENCE OF GEO. RICH, A TYPE OF THE FINE HOMES AT THE DALLES



VIEW OF MT. HOOD FROM THE DALLES OF THE COLUMBIA RIVER, JUST EAST OF THE DALLES



ROBERT KELLY, Sheriff Wasco County, The Dalles

H. H. BURRELL, Public Assessor



FARMERS DELIVERING WHEAT AT THE DALLES

—PHOTO BY BENJ. A. GIFFORD, THE DALLES.



RECEIVING WOOL AT THE DALLES

—PHOTO BY BENJ. A. GIFFORD, THE DALLES.



INDIAN AND DUGOUT CANOE CELEJO, COLUMBIA RIVER

—COPYRIGHT PHOTO BY BENJ. A. GIFFORD, THE DALLES.



GROUP OF WARM SPRING INDIANS

SHEEP AT REST, AT COLUMBUS, COLUMBIA RIVER

—PHOTO BY BENJ. A. GIFFORD, THE DALLES.



CADRAGGE ROCK, SIX MILES NORTH OF THE DALLES—WEIGHT OF HEAD, 121 TONS; DIAMETER OF STEM, 30 INCHES—ABRASION MADE BY WIND AND SAND

—COPYRIGHT PHOTO BY BENJ. A. GIFFORD, THE DALLES.



INDIANS ON HORSEBACK, AT THE DALLES

—PHOTO BY BENJ. A. GIFFORD, THE DALLES.



FERRING SHEEP OVER THE COLUMBIA, ABOVE THE DALLES

—PHOTO BY BENJ. A. GIFFORD, THE DALLES.



BOB Mc-GREE LAST OF THE CLATSOPS, A COAST IRRE OF INDIANS

—PHOTO BY CATANER.



THE "HOME GUARD." VIEW OF AN INDIAN CAMP ON THE COLUMBIA

—COPYRIGHT PHOTO BY BENJ. A. GIFFORD, THE DALLES, OR.



A YAKIMA INDIAN FACE

—COPYRIGHT PHOTO BY BENJ. A. GIFFORD, THE DALLES.



"MY DAY AT HOME"—INDIAN LIFE NEAR THE DALLES

—COPYRIGHT PHOTO BY BENJ. A. GIFFORD, THE DALLES.



CASE LOCKS, COLUMBIA RIVER

—COPYRIGHT PHOTO BY BENJ. A. GIFFORD, THE DALLES.