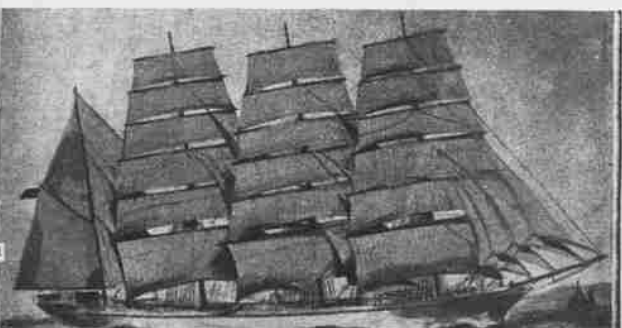




—DAVIS, MARINE PHOTO. BRITISH BARK MERYDA. 220 TONS NET REGISTER, 242 FEET LONG, 48 FEET BEAM, 127 FEET DEPTH. HOME FOR PORTLAND, OCTOBER 1899. WINDY WINDY WINDY.



WATER FRONT NEAR BLAINE STREET BRIDGE.



—DAVIS, MARINE PHOTO. BRITISH BARK ACHNASHIE. 224 TONS NET REGISTER, 208 CUBIC FEET, 210 FEET LONG, 48 FEET BEAM, 127 FEET DEPTH. HOME FOR PORTLAND, OCTOBER 1899.



G. E. & S. CO'S FORTWHEEL TUG WALLEKA, MOUTH COLUMBIA RIVER.



—PHOTO BY J. H. BATH, PORTLAND, OR. TUG SAMSON, ENGAGED IN TOWING BETWEEN COLUMBIA RIVER AND GRAY'S HARBOR, WASH.



—PHOTO BY J. H. BATH, PORTLAND, OR. ON THE LOWER COLUMBIA RIVER NEAR RAVEN.

All vessels shown on shipping pages of this number have visited Portland's harbor.



THE MIDDLE RIVER SHIPPING CENTER, PORTLAND.



—PHOTO BY J. H. BATH, PORTLAND, OR. TUG SAMSON, ENGAGED IN TOWING BETWEEN COLUMBIA RIVER AND GRAY'S HARBOR, WASH.



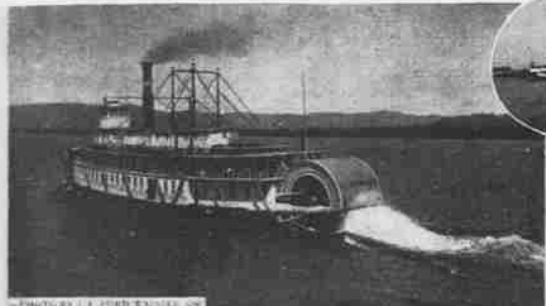
—PHOTO BY J. H. BATH, PORTLAND, OR. GERMAN SHIP PETER WEIDALE. 205 TONS NET REGISTER.



BUILDING HULLS FOR RIVER BOATS AT PORTLAND.



—PHOTO BY J. H. BATH, PORTLAND, OR. TUG WALLEKA, MOUTH COLUMBIA RIVER.



—PHOTO BY J. H. BATH, PORTLAND, OR. A STERNWHEELER ON THE COLUMBIA RIVER—PORTLAND BRINGS OFF THE LARGEST AND FASTEST FLEET OF STERNWHEEL BOATS IN THE WORLD.



—PHOTO BY J. H. BATH, PORTLAND, OR. TRANSPORTS PENNSYLVANIA AND OLYMPIA AT DOCK, PORTLAND, WAITING FOR EMBARKMENT OF TROOP FOR THE PHILIPPINES.



THE U. S. GOVERNMENT TUGBOATS PENNSYLVANIA AND OLYMPIA WHICH LEFT PORTLAND NOVEMBER, 1899, WITH THE 2ND AND 3RD REGIMENTS FOR THE PHILIPPINES.—PHOTO BY J. H. BATH, PORTLAND, OR.



—PHOTO BY J. H. BATH, PORTLAND, OR. DRAW OF RAILROAD STEEL BRIDGE PORTLAND, OREG.—THIS IS ONE OF THE WIDEST DRAWN IN THE WORLD.



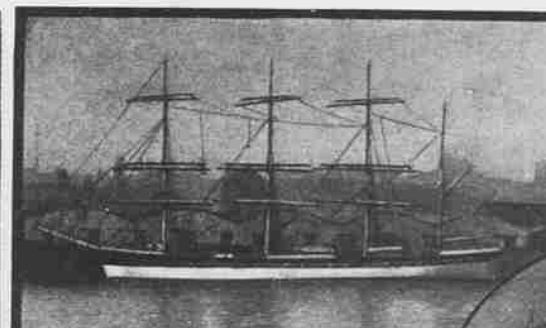
THE SOUTHERN PACIFIC CO'S WHEAT DOCK, PORTLAND. Since 1891 the people of Portland have spent \$700,000 to deepen the channel to the sea. This money has been raised partly by direct taxation, and partly by issuance of bonds by the Port of Portland commission, which has charge of river improvements. The work done has given Portland a channel to the sea having a depth of 23 feet 6 inches at EXTREME LOW WATER. Vessels drawing 25, 26 and 27 feet easily reach Portland however. It is the purpose of the commission to give Portland a 30 FOOT CHANNEL TO ASTORIA and a 40 FOOT CHANNEL AT THE MOUTH OF THE COLUMBIA.



—DAVIS, MARINE PHOTO. BRITISH STEAMSHIP CITY OF PERTH. 224 TONS NET REGISTER, 242 FEET LONG, 48 FEET BEAM, 127 FEET DEPTH. HOME FOR PORTLAND, OCTOBER 1899.



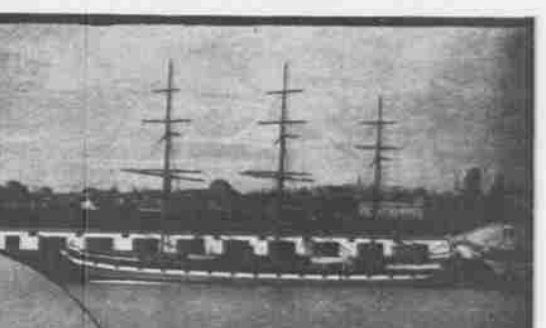
—PHOTO BY J. H. BATH, PORTLAND, OR. DOCKS OF GOVERNMENT TRANSPORTS, PENNSYLVANIA AND OLYMPIA, IN PORTLAND HARBOR, NOVEMBER, 1899.



—PHOTO BY J. H. BATH, PORTLAND, OR. BRITISH SHIP BALASORE.—PHOTO BY J. H. BATH, PORTLAND, OR. 270 TONS REGISTER, 242 FEET LONG, 48 FEET BEAM, 127 FEET DEPTH. HOME FOR PORTLAND, OCTOBER 1899. WINDY WINDY WINDY.



—PHOTO BY J. H. BATH, PORTLAND, OR. BRITISH SHIP WALCROFT.—PHOTO BY J. H. BATH, PORTLAND, OR. 270 TONS REGISTER, 242 FEET LONG, 48 FEET BEAM, 127 FEET DEPTH. HOME FOR PORTLAND, OCTOBER 1899. WINDY WINDY WINDY.



—PHOTO BY J. H. BATH, PORTLAND, OR. BRITISH SHIP WALCROFT.—PHOTO BY J. H. BATH, PORTLAND, OR. 270 TONS REGISTER, 242 FEET LONG, 48 FEET BEAM, 127 FEET DEPTH. HOME FOR PORTLAND, OCTOBER 1899. WINDY WINDY WINDY.



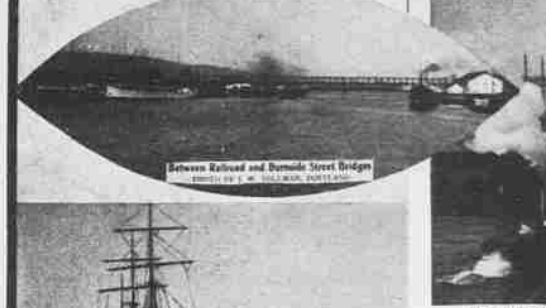
—PHOTO BY J. H. BATH, PORTLAND, OR. Oregon R. & Navigation Co's Passenger Steamship Columbia, Portland San Francisco Line. PHOTO BY J. H. BATH, PORTLAND, OR.



—PHOTO BY J. H. BATH, PORTLAND, OR. BRITISH BARK ROYAL FORTIS. 270 TONS REGISTER, 242 FEET LONG, 48 FEET BEAM, 127 FEET DEPTH. HOME FOR PORTLAND, OCTOBER 1899. WINDY WINDY WINDY.



—PHOTO BY J. H. BATH, PORTLAND, OR. The Three Government Transports, City of St. James, City of St. Louis and City of St. Paul at Portland, October, 1899. PHOTO BY J. H. BATH, PORTLAND, OR.



—PHOTO BY J. H. BATH, PORTLAND, OR. Between Railroad and Duane Street Bridge. PHOTO BY J. H. BATH, PORTLAND, OR.



—PHOTO BY J. H. BATH, PORTLAND, OR. Portland's Harbor is Never Without Ships. Just an Everyday Scene Near Alameda Street. PHOTO BY J. H. BATH, PORTLAND, OR.



—PHOTO BY J. H. BATH, PORTLAND, OR. Portland's Harbor is Never Without Ships. Just an Everyday Scene Near Alameda Street. PHOTO BY J. H. BATH, PORTLAND, OR.



—PHOTO BY J. H. BATH, PORTLAND, OR. PORTLAND HARBOR, OCTOBER 4, 1899. HARBOR NEAR DOCK, THE BARK, BRITISH SHIP, DRAWN AT PORT, DRAFT 25 FEET, BEAM 48 FEET, LENGTH 242 FEET, DEPTH 12 FEET, HOME FOR PORTLAND, OCTOBER 1899. WINDY WINDY WINDY.



—PHOTO BY J. H. BATH, PORTLAND, OR. PORTLAND HARBOR, OCTOBER 4, 1899. HARBOR NEAR DOCK, THE BARK, BRITISH SHIP, DRAWN AT PORT, DRAFT 25 FEET, BEAM 48 FEET, LENGTH 242 FEET, DEPTH 12 FEET, HOME FOR PORTLAND, OCTOBER 1899. WINDY WINDY WINDY.



—PHOTO BY J. H. BATH, PORTLAND, OR. PORTLAND HARBOR, OCTOBER 4, 1899. HARBOR NEAR DOCK, THE BARK, BRITISH SHIP, DRAWN AT PORT, DRAFT 25 FEET, BEAM 48 FEET, LENGTH 242 FEET, DEPTH 12 FEET, HOME FOR PORTLAND, OCTOBER 1899. WINDY WINDY WINDY.



—PHOTO BY J. H. BATH, PORTLAND, OR. Harbor, Showing Great Wheat Docks. PHOTO BY J. H. BATH, PORTLAND, OR.



—PHOTO BY J. H. BATH, PORTLAND, OR. Harbor, Showing Great Wheat Docks. PHOTO BY J. H. BATH, PORTLAND, OR.



—PHOTO BY J. H. BATH, PORTLAND, OR. Harbor, Showing Great Wheat Docks. PHOTO BY J. H. BATH, PORTLAND, OR.



—PHOTO BY J. H. BATH, PORTLAND, OR. BRITISH SHIP WRESTLEY HALL.—PHOTO BY J. H. BATH, PORTLAND, OR. 270 TONS REGISTER, 242 FEET LONG, 48 FEET BEAM, 127 FEET DEPTH. HOME FOR PORTLAND, OCTOBER 1899. WINDY WINDY WINDY.



—PHOTO BY J. H. BATH, PORTLAND, OR. BRITISH SHIP WRESTLEY HALL.—PHOTO BY J. H. BATH, PORTLAND, OR. 270 TONS REGISTER, 242 FEET LONG, 48 FEET BEAM, 127 FEET DEPTH. HOME FOR PORTLAND, OCTOBER 1899. WINDY WINDY WINDY.



—PHOTO BY J. H. BATH, PORTLAND, OR. BRITISH SHIP WRESTLEY HALL.—PHOTO BY J. H. BATH, PORTLAND, OR. 270 TONS REGISTER, 242 FEET LONG, 48 FEET BEAM, 127 FEET DEPTH. HOME FOR PORTLAND, OCTOBER 1899. WINDY WINDY WINDY.