

Leading Hotels



HOTEL PORTLAND.

COST \$1,000,000.

The Portland

H. O. BOWERS, Manager.

American Plan, \$3 Per Day and Upward.

HEADQUARTERS FOR TOURISTS AND COMMERCIAL TRAVELERS.

Portland, Oregon.

Tremont Hotel

RED BLUFF, CALIFORNIA.

First Class in Every Particular. Everything entirely new throughout the building. Headquarters for Commercial Men. Commodious Sample Rooms.

S. E. MURPHY, Proprietor

Best furnished house in Southern Oregon

New Depot Hotel

A. H. PRACHT, Proprietor.

All Trains stop 30 Minutes For Meals.

ASHLAND, OREGON

A FRIENDLY TIP

When in Roseburg, Oregon, go to

MOSIER'S

Horseshoe Lunch Counter

Near the S. P. Depot

Telephone 90-B F. O. Box 531

The Grand Pacific Hotel

CHAR. A. SCHRAGE, Proprietor.

Handsomely Appointed and First Class in Every Particular.

Corner Railroad St. and Higgins Ave.

MISSOULA, MONT.

Hotel Crellin

FRED A. JORDAN, Prop.

Situated in the most convenient business part of the city.

AMERICAN PLAN.

Convenient to All Cars and Trains

Cor 10th and Washington Sts.

OAKLAND, CAL.

SEATTLE'S NEW HOTEL

Headquarters for Tourists and Commercial Travelers



AMERICAN PLAN \$3.00 and Upwards EUROPEAN PLAN \$1.00 and Upwards

THE LINCOLN

The Blackwell Hotel Company

Most beautifully and desirably located, on Madison street at Fourth Avenue—a section free from noise and dust—most convenient to all points of the city and commanding a magnificent view of Puget sound, Mount Rainier and the Olympic range.

SADDLE ROCK RESTAURANT. BUCKMAN & GARRAGHAN, Proprietors. First Class in every respect. Oysters a specialty.



The Tacoma

W. B. BLACKWELL, Prop.

One of the best hotels on the Pacific Coast.

American Plan \$3.00 per Day and Upwards

TACOMA, WASH.

The Colonial Hotel

Strictly First Class. New and Most Elegantly Furnished Apartments in the City. Single or Two Suites.

A. M. Cadien, Prop. F. E. Curtiss, Mgr. Telephone Main 925

2119 First Ave. cor. Steena SHATTLE, WASH.

Delmonico Restaurant Under Same Management

The Alturas House

Well Furnished and Everything New

Reds. 50 Cents and Up. Ind. Phone 375

511 1/2 Main St. Boise, Idaho

HOTEL CECIL

SEATTLE, U. S. A.

E. P. GAFFNEY, Manager

One of the Best Hotels in the Northwest.

Large Sample Rooms for Commercial Men.

EUROPEAN PLAN

Furnished Rooms at any time at reasonable prices. Fine Italian and French Restaurant in Connection. Phone Ind. X. 1699.

COLUMBUS HOUSE AND SALOON

Liquors and Cigars

Open Day and Night

167 WASHINGTON STREET SEATTLE, WASH.

Reduced Freight Rates

on HOUSEHOLD GOODS to all Eastern Cities. Saving of 25 to 50 per cent. We transfer Freight, Passengers and Baggage. Pool shipments given prompt and careful attention. We invite correspondence.

The Seattle Transfer Co.

SEATTLE, U. S. A.

Messengers on All Trains

Claussen Brewing Ass'n

Brewers and Bottlers of

TANNHAEUSER AND SALVATOR BEER

SEATTLE, U. S. A.

THE Quaker Drug Co.

SEATTLE, WASH.

Sell Drugs and Patent Medicines at Cut Rates, and Prepay Freight Charges to Points within one hundred miles of Seattle.

SOME ODD RAILROAD RULES.

Carious Early Experiences in Transportation in Pennsylvania. Some of the regulations in force on the earliest railroads built in Pennsylvania read very queerly in these days of "limiteds" and "flyers," says the Boston Transcript. A number of them are quoted in a brief paper read before the Engineers' Society of Western Pennsylvania on early experiences in transportation by Antes Snyder, and abstracted in part in the Scientific American supplement. Says this paper: "When the commonwealth opened the Philadelphia and Columbia Railway the theory was that the State furnish the roadway and that any one who pleased could furnish his own vehicle and motive power and use the roadway whenever he wished by paying the State tolls for its use, just as the turnpikes of the day were used. But it was soon discovered that a certain character of vehicles was needed and that rules and regulations as to times and manner of using the railroads were absolutely necessary to effect their successful operation. The ordinary shippers found it too expensive to fit themselves with the necessary plant and that they could get this transportation done by large and well-equipped shippers much more cheaply than they could do it themselves, so that in practice the business drifted into the hands of a few individuals and companies, who did this service for the many. The railway as constructed was intended for the horse as motive power, though the locomotive was being introduced as an experiment shortly after the railway was completed. The following among the rules and regulations adopted by the canal commission for the regulation of the railway may be of interest.

"Sec. 22. No car shall carry a greater load than three tons on the Columbia and Philadelphia Railway, nor more than three and a half tons on the Portage Railway, nor shall any burden car travel at a greater speed than five miles per hour, unless the car body and load shall be supported on good steel springs." "Sec. 108. It shall be the duty of the conductors of cars moving with less speed upon the railways, upon notice by ringing a bell, blowing a horn or otherwise, of the approach of a locomotive engine or other cars moving in the same direction at a greater speed, to proceed with all possible dispatch to the first switch in the course of their passage, and pass off said track until said locomotive engine or other cars moving at greater speed can pass by. The conductors of the slower cars are directed to open and close the switches so as to leave them in proper order. Any person who shall refuse or neglect to comply with the provisions of this regulation shall, for every offense, forfeit and pay the sum of \$10."

"It must have been a very interesting and novel sight, indeed, when the horse and the locomotive were used indiscriminately on the same track and were struggling for supremacy as the future motive power of our railroads, and the approach of a locomotive was heralded by the tooting of a horn. Even at that time the right of way was given to the fast horse."

WAYS OF GEORGE GOULD. He Keeps Himself in Good Health by Athletic Exercise.

George J. Gould, physically, is in striking contrast to not a few of the directors of the Gould companies who were so actively identified with the late Jay Gould. George Gould's fondness for sports and athletic games keeps him in excellent physical condition, says the New York Mail. He almost invariably arrives at his office in the Western Union building, 155 Broadway, a little before 10 a. m. His pace is swift and only a good walker can keep up with him. Often in the coldest weather he comes with his overcoat on his arm. Immediately upon reaching his desk he throws off not only his overcoat, but his waistcoat as well, and pitches into a vast amount of work. Frequently during the day Mr. Gould may be seen passing rapidly through the corridors of the Western Union building in this same negligee attire.

Not long ago a midday meeting of the directors of the Texas and Pacific Railroad was called, and Russell Sage, John T. Terry and Sam Sloan, all active associates of the late Jay Gould, came down the corridor from George Gould's office, all wearing winter overcoats, although the weather was abominably mild. Mr. Gould appeared a few minutes later minus his overcoat and waistcoat, and in this attire presided at the meeting, while his aged conferees, in conventional dress and holding high silk hats with a great deal of dignity, unanimously ratified his propositions. Mr. Gould rarely gets further downtown than the Harriman offices, at 120 Broadway. He could easily pass through Wall street without being generally recognized. Even some of the Wall street reporters do not know him by sight.

Might Have Been Worse. Bourke Cockran was condemning a certain popular novel. "This novel," he said, "is as poor and barren as Elmo County land." "Is Elmo County land very poor and barren?" asked one of Mr. Cockran's interlocutors. "Is it?" he said. "Well, I should say it is. Once two strangers rode on horseback through Elmo County, and the barrenness of the land amazed them. Nothing but weeds and rocks everywhere. As they passed a farmhouse they saw an old man sitting in the garden, and they said: "Poor chap! Poor, poverty-stricken old fellow!" "The old man overheard them, and called out in a shrill voice: "Gents, I hain't so poor an' poverty-stricken as ye think. I don't own none o' this land."

Origin of Blankets. Blankets were first made by Blanket Brothers, at Bristol, England, about the middle of the thirteenth century. Don't gossip, don't spread poison with your tongue; don't be a weiner-wurser. Some men lose their hair by butting in at the wrong time.

Missoula advertising.

THE GARDEN CITY BAKERY.

HENRY ROSENDORF, Proprietor. Bread, cakes and pies of superior quality fresh every day.

116 West Main Street, Missoula, Montana

SCOTT'S PLACE.

Fine Wines, Liquors and Cigars. Everything First Class.

J. A. SCOTT, Proprietor. Missoula, Mont.

First National Bank of Missoula.

Montana.

[No. 2106]

Capital, \$150,000.00 Surplus, \$50,000.00

DIRECTORS: A. B. Hammond, President; A. G. England, Vice-President; M. Keith, Cashier; R. A. Eddy; T. E. Greenough; C. H. McLeod; O. G. England

J. A. WALKER GEO. W. ALBEE

WALKER & ALBEE

Livery, Feed and Sale Stables

Horses Boarded by the Day, Week or Month. Cabs, buses and wagons to and from all trains and hotels. Finest cushion tire turnouts in the city. Higgins Ave., opp. Kennedy Hotel. MISSOULA, MONTANA



THIS HAPPY MAN Is Never Without a Smile. He Uses Only Our Garden City Beer, And Life Seems Worth the While.

GARDEN CITY BREWING CO., Missoula, Montana



MISSOULA MERCANTILE COMPANY

Missoula, Montana.

Wholesale and Retail Dealers. We sell everything and everything the very best. Our line of men's clothing, furnishings, shoes, etc., embraces such reliable brands as these: Manhattan Shirts, E. & W. Collins, Stein-Block and H. S. & M. Ready-to-Wear Suits and Overcoats, Knox Hats, Hagan & Son's and Torrey's Fine Shoes.

"We're There With the Goods"

THE GRAND PACIFIC SALOON

Missoula, Montana.

Fine Wines, Liquors and Cigars. Draught Beer, Fine, 5c. Bottled Beer, 25c. a Quart.

All Trains Stop 15 Minutes. Opp. N. P. Depot.

The Cascade Livery

BOARDING AND SALE STABLES

Special Attention Given to Commercial Men.

MARK W. DOTCHEN, Prop. Second Avenue So. bet. Fourth and Fifth Sts.

Great Falls, Mont.

Drew & McDonald

Great Falls, Montana

Gen. E. Drew Kalispell J. D. McDonald Great Falls

Great Falls Kalispell Boots and Shoes Genl. Merchandise

P. J. Brophy & Co.

WHOLESALE GROCERS AND IMPORTERS

Largest Stock, Largest Business, Finest Goods, Lowest Prices

28 Main St. BUTTE, MONT.

Seattle Real Estate

John Davis & Co.

709 Second Avenue Seattle, Wash.

Insurance Loans Rentals

Leading Hotels



The BAY VIEW

JONES BLOCK, COR. NINTH AND C STS., TACOMA, WASH.

Elegantly Furnished Apartments with Bath. Elevator. Steam Heat. Electric Light. Central Location.

COMMERCIAL TRADE SOLICITED

HOTEL RIDPATH

EUROPEAN PLAN

100 Daylight Rooms—\$1 to \$3 Per Day Private Baths—Single and in Suites

REMODELED AND REFURNISHED

First and Stevens Sts.

SPOKANE WASH.

Hotel Westminster

F. O. JOHNSON, Proprietor.

American and European Plan.

Corner Main and Fourth Streets, LOS ANGELES, CAL.

MURPHY & BINE

The Lunch Counter.

Home Cooking. The Best Meals in the City for the Price.

LA GRANDE, OREGON.

HOTEL FOLEY

I. B. FISHER, Prop.

Headquarters for Commercial Men

Electric Lights and Steam Heat

LA GRANDE, OREGON

ST. CHARLES HOTEL

JOHN GIBLIN, Prop.

First-Class Accommodations and Prompt Service. Large Sample Rooms for Commercial Travelers.

Phone 7 Cor. First and Washington Sts.

Albany, Oregon.

The Spokane

(European Plan.)

The Leading Hostelry in the State of Washington.

Headquarters for the Traveling Public

Special Sample Rooms with Arc Light.

50 NEW BATH-ROOM SUITES

Elegant Public and Private Dining Rooms.

SPOKANE, WASH.

CORDI HOTEL.

THOS. CORDI, Proprietor.

Rates \$1.50 and \$1.00 per day. Entirely New and Modern

Centrally Located, Two Blocks from S. P. Depot

BEDDING, CALIFORNIA.



Hotel Green

Pasadena, Cal.

...ABSOLUTELY FIREPROOF

HOTEL SOMMER

A. L. MORRIS, Manager.

The Only First-Class Hotel in the City.

LA GRANDE OREGON

HOTEL PEDICORD

T. J. PEDICORD, Prop.

Heated by Steam. Hot and Cold Baths. Electric Calls and Electric Lights in every Room.

EUROPEAN PLAN

Rooms 50c, 75c and \$1.00 Per Day. Meals, 25 Cents.

Free Bus and Free Sample Rooms.

209-13 Riverside Ave., SPOKANE

Mosier's Lunch Counter

All Trains Stop 30 MINUTES FOR MEALS.

Headquarters for travelers and railroad men.

A. MOSIER, Proprietor. ROSEBURG, Oregon

THE O. T. DINING ROOM

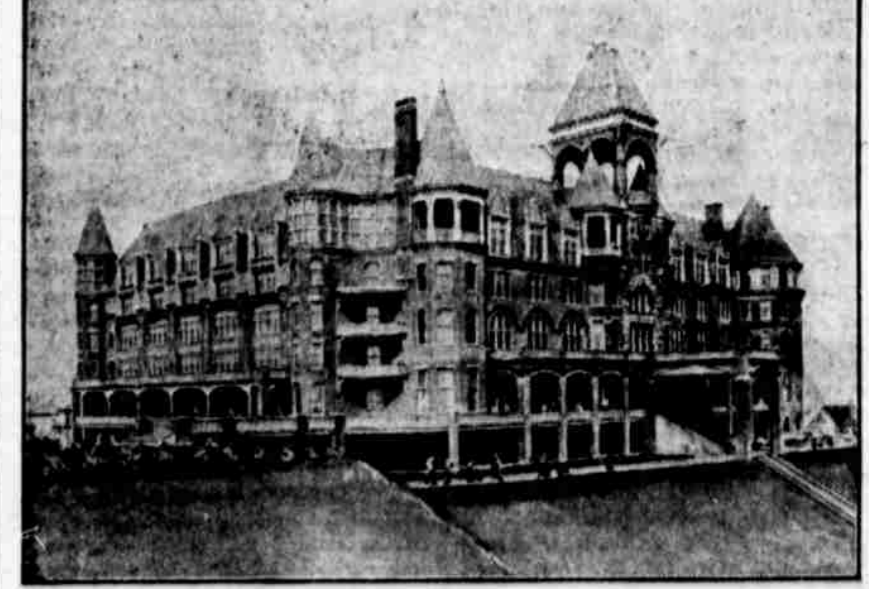
E. H. OTLEY, Proprietor.

All Trains Stop 30 Minutes FOR MEALS.

One of the finest places at the depot for meals. We always have chicken supper. Headquarters for the traveling public. Oysters in any style.

Roseburg, Oregon

THE WASHINGTON--SEATTLE



THE SCENIC HOTEL OF THE WORLD.

This magnificent tourist hotel is Seattle's most prominent architectural feature—being situated upon the highest point of land in the downtown district—340 feet above sea level. It is, however, easy of access by private tramway, by regular hotel conveyance, by street car or by carriage. The scenery from The Washington is the most superb to be found on the Pacific coast. The appointments and furnishings of The Washington are entirely modern and high-class; the cuisine and service are most satisfactory. The rates are exceedingly reasonable for a fashionable tourist hotel.

The Washington is situated in the midst of six acres of beautiful grounds, which with the broad driveways, green lawns, and a profusion of roses and carnations, make the location an ideal one. The scenery from The Washington and grounds is unsurpassed in the West—no other point in Seattle giving such a magnificent view as can be had from this hotel. President Roosevelt was charmed with the scene that met the eye, from the verandas and grounds of the hotel, and so expressed himself. Thousands of others, in public and private life, have come and gone since the opening of this grand hostelry, who have added their tribute to the many expressions of pleasure and satisfaction derived from a glimpse of the Puget Sound country from this vantage ground, including as it does a view of mountains, lakes, Sound, harbor and all Seattle. Write for illustrated booklet.