

Leading Hotels



HOTEL PORTLAND.

COST \$1,000,000.

The Portland

H. O. BOWEN, Manager. American Plan, \$3 Per Day and Upwards.

HEADQUARTERS FOR TOURISTS AND COMMERCIAL TRAVELERS.

Portland, Oregon.

Tremont Hotel

RED BLUFF, CALIFORNIA. First Class in Every Particular. Everything entirely new throughout the building. Headquarters for Commercial Men. Commodious Sample Rooms.

S. E. MURPHY, Proprietor. Best furnished house in Southern Oregon

New Depot Hotel

A. H. PRACHT, Proprietor. All Trains stop 30 Minutes For Meals.

ASHLAND, OREGON

A FRIENDLY TIP

When in Roseburg, Oregon, go to

MOSIER'S

Horseshoe Lunch Counter. Near the S. P. Depot

Telephone 94-B P. O. Box 551

The Grand Pacific Hotel

CHAR. A. SCHERAGE, Proprietor. Handsomely Appointed and First Class in Every Particular.

Corner Railroad St. and Higgins Ave. MISSOULA, MONT.

Hotel Crellin

FRED A. JORDAN, Prop. Situated in the most convenient business part of the city.

AMERICAN PLAN. Convenient to All Cars and Trains

Cor 10th and Washington Sts. OAKLAND, CAL.

SEATTLE'S NEW HOTEL

Headquarters for Tourists and Commercial Travelers



AMERICAN PLAN \$3.00 and Upwards EUROPEAN PLAN \$1.00 and Upwards

THE LINCOLN

The Blackwell Hotel Company. Most beautifully and desirably located, on Madison street at Fourth avenue—a section free from noise and dust—most convenient to all points of the city and commanding a magnificent view of Puget sound, Mount Rainier and the Olympic range.

SADDLE ROCK RESTAURANT. BUCKMAN & CARRAGHAN, Proprietors. First Class in every respect. Oysters a specialty 1019 Second Street, Sacramento, Cal.



The Tacoma

W. B. BLACKWELL, Prop. One of the best hotels on the Pacific Coast. American Plan \$3.00 per Day and Upwards TACOMA, WASH.

The Colonial Hotel

Strictly First Class. New and Most Elegantly Furnished Apartments in the City. Single or En Suite. Steam Heat, Large Wall Closets, Private and Public Baths. Rates by the Day, Week or Month. One Block South of Postoffice. A. M. Cadlen, Propr. P. H. Curtis, Mgr. Telephone Main 925 1119 First Ave. cor. Seneca SEATTLE, WASH.

The Alturas House

Well Furnished and Everything New Beds 50 Cents and Up. Ind. Phone 373 511 1/2 Main St. Boise, Idaho

HOTEL CECIL

SEATTLE, U. S. A. E. P. GAFFNEY, Manager. One of the Best Hotels in the Northwest. Large Sample Rooms for Commercial Men. EUROPEAN PLAN

COLUMBUS HOUSE AND SALOON

Liquors and Cigars Open Day and Night 167 WASHINGTON STREET SEATTLE, WASH.

Reduced Freight Rates

on HOUSEHOLD GOODS to all Eastern Cities. Saving of 25 to 50 per cent. We transfer Freight, Passengers and Baggage. Pool shipments given prompt and careful attention. We invite correspondence.

The Seattle Transfer Co.

SEATTLE, U. S. A. Messengers on All Trains

Claussen Brewing Ass'n

Brewers and Bottlers of TANNHAEUSER AND SALVATOR BEER SEATTLE, U. S. A.

GOOD Short Stories

At Waterloo, Lord Anglesey was standing close to the Duke of Wellington when he received his wound. Lord Anglesey turned to the Duke, and said: "By G—, I have lost my leg!" "Have you? By G—" said the Duke, still gazing at the battle. "Farming? I know what it is," declares Representative Fred Landis, of Indiana: "father and five of my boys used to work all the year round to raise stuff to feed five horses. Finally two of the horses died, and that enabled Charley and myself to get away from the farm and come to Congress."

The all-night and next-day habits of the late Phil May, the artist, have furnished material for many a story. Joe Tapley, the singer, tells that he came across May one night, and heard that the latter had not been to bed for four nights and days. He remonstrated, and May said: "Never mind, Joe, we'll make a bargain; don't you lose any sleep on my account, and I promise that as soon as I feel tired I'll go to bed!" Rudolph Eickemeyer, Jr., was out in a field, near a hay-stack, with his camera, when John Kendrick Bangs happened along and asked him, in surprise, what there was there worth photographing. "Just you come over here and look at the reflection on my ground glass and you will see!" responded Eickemeyer, with such artistic fervor that Bangs ventured over and put his head under the cloth. "Ah, now I see!" said Mr. Bangs, gravely; "the hay-stack is standing upside down!"

Major Lacey, of Iowa, and Senator Alger, of Michigan, are very much alike in appearance, and are often mistaken for each other. So striking is the resemblance that Speaker Reed made it the subject for one of his witticisms. It was at the time that Alger's conduct as Secretary of War was being investigated, that Reed, stepping up to the member from Iowa, and putting his arm over his shoulder, said: "Lacey, you look so much like Secretary Alger that I always think, when I see you, that you ought to be whitewashed." Professor Phelps, who disliked mathematics, was once walking with Professor Newton, who began discussing a problem so deep that his companion could not follow it. He fell into a brown study, from which he was aroused by Newton's emphatic assertion, "and that, you see, gives us x!" "Does it?" asked Mr. Phelps, politely. "Why doesn't it?" exclaimed the Professor, excitedly, alarmed at the possibility of a flaw in his calculations. Quickly his mind ran back and detected a mistake. "You are right, Mr. Phelps. You are right!" shouted the Professor. "It doesn't give us x; it gives us y." And from that time Professor Phelps was looked upon as a mathematical prodigy, the first man who ever tripped Newton.

FISH ARE SHIPPED ALIVE. Sent to Market in as Lively a Condition as When First Caught. Fresh fish from nearly every part of the world are obtainable in any of the larger markets. In fact, the demand for dead fish is rapidly decreasing, epicures demanding that they be in the enjoyment of good health and spirits almost up to the moment they are dropped into the frying pan.

A novel apparatus for the carriage of live fish has just been invented by Dr. N. Von Lorenz, of Marienbrunn, Austria, which is called the hydrobiont. The device is based upon the injection of oxygen into the water, contained in tanks, during the transportation. The oxygen injector is placed at the bottom of the transportation tank, which is filled with water and fish. This oxygen injector is composed of a steel cylinder containing compressed oxygen gas. When the cock, which is a horizontal disk provided with apertures, is opened, the oxygen is allowed to escape through a reduction valve. The oxygen then passes through a regulating valve attached to the reduction valve, and thence through a rubber tube into the oxygen distributor. This latter is composed of a diaphragm of inorganic material stretched across a porous cylindrical tube.

The gas, after coming into this tube or distributor, is immediately diffused and bubbles up through the water containing the fish. These bubbles ascend very slowly toward the surface and become dissolved therein to an extent that depends largely upon their ascensional velocity and the degree of gaseous saturation in the water. The unutilized excess escapes at the surface. This solution of oxygen in the water, which is obtained with a minimum consumption of gas, is what keeps the fish alive, and is constantly being renewed as it is consumed by the latter.

The practical manipulation of the hydrobiont is so simple that it can be entrusted to any person of ordinary intelligence. All that has to be done by the person in charge is to turn on the cock and take the apparatus by its two handles and place it at the bottom of the tank containing the fish. It is, of course, necessary to regulate the device according to the amount of water in the tank and the number of fish contained therein, and according to the amount of oxygen consumed by the various kinds of fish. Finally, it is necessary also to regulate the capacity of oxygen according to the time to be consumed in the transportation. The inventor has calculated all such data for most varieties of fish, which in all likelihood may be transported, so that the person employing the apparatus has only to follow once for all the indications determined by the inventor.

Missoula advertising.

THE GARDEN CITY BAKERY. HENRY ROSENDOFF, Proprietor. Bread, cakes and pies of superior quality fresh every day. 118 West Main Street, Missoula, Montana

SCOTTY'S PLACE. Fine Wines, Liquors and Cigars. Everything First Class. J. A. SCOTT, Proprietor. Missoula, Mont.

First National Bank of Missoula.

Montana. (No. 2106) Capital, \$150,000.00 Surplus, \$50,000.00 DIRECTORS: A. B. Hammond, President; A. G. England, Vice-President; J. M. Keith, Cashier; R. A. Eddy; T. L. Greenough; C. H. McLeod; C. O. England

J. A. WALKER GEO. W. ALBEE

WALKER & ALBEE

Livery, Feed and Sale Stables. Horses Boarded by the Day, Week or Month. Cabs, buses and wagons to and from all trains and hotels. Finest custom tire turnouts in the city. Higgins Ave., opp. Kennedy Hotel. MISSOULA, MONTANA



THIS HAPPY MAN. Is Never Without a Smile, He Uses Only Our Garden City Beer, And Life Seems Worth the While.

GARDEN CITY BREWING CO., Missoula, Montana



MISSOULA MERCANTILE COMPANY

Missoula, Montana. Wholesale and Retail Dealers. We sell everything and everything the very best. Our line of men's clothing, furnishings, shoes, etc., embraces such reliable brands as these: Manhattan shirts, E. & W. Collins, Stein-Nielsen and H. S. & M. Ready-to-Wear Suits and Overcoats, Knox Hats, Hanan & Son's and Torrey's Fine Shoes.

"We're There With the Goods"

THE GRAND PACIFIC SALOON

Missoula, Montana. Fine Wines, Liquors and Cigars. Draught Beer, Fine, 5c. Bottled Beer, 25c. a Quart.

All trains Stop 15 Minutes. Opp. N. P. Depot.

The Cascade Livery

BOARDING AND SALE STABLES. Special Attention Given to Commercial Men. MARK W. DOTCHEN, Propr. Second Avenue So. bet. Fourth and Fifth Sts. Great Falls, Mont.

Geo. E. Drew Kalispell J. D. McDonald Great Falls

Drew & McDonald

Great Falls, Montana. Great Falls Boots and Shoes Kalispell Genl. Merchandise

P. J. Brophy & Co.

WHOLESALE GROCERS AND IMPORTERS. Largest Stock, Largest Business, Finest Goods, Lowest Prices. 28 Main St. BUTTE, MONT.

Seattle Real Estate

John Davis & Co. 709 Second Avenue Seattle, Wash. Insurance Loans Rentals

Leading Hotels



The BAY VIEW

JONES BLOCK, COR. NINTH AND C STS., TACOMA, WASH. Elegantly Furnished Apartments with Bath. Elevator. Steam Heat. Electric Light. Central Location. COMMERCIAL TRADE SOLICITED

HOTEL RIDPATH

EUROPEAN PLAN 100 Daylight Rooms—\$1 to \$3 Per Day Private Baths—Single and in Suites REMODELED AND REFURNISHED First and Stevens Sts. SPOKANE WASH.

Hotel Westminster

F. O. JOHNSON, Proprietor. American and European Plan. Corner Main and Fourth Streets, LOS ANGELES, CAL.

MURPHY & BINE

The Lunch Counter. Home Cooking. The Best Meals in the City for the Price. LA GRANDE, OREGON.

HOTEL FOLEY

I. B. FISHER, Prop. Headquarters for Commercial Men Electric Lights and Steam Heat LA GRANDE, OREGON

ST. CHARLES HOTEL

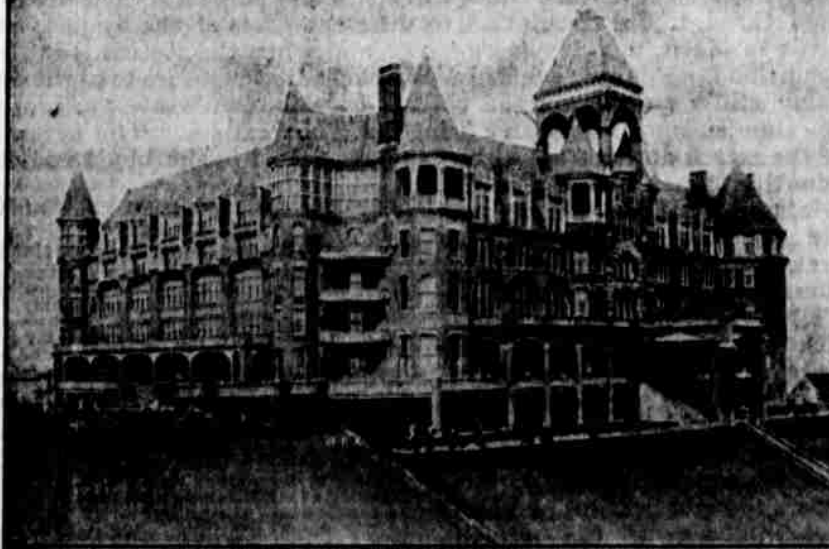
JOHN GIBLIN, Prop. First-Class Accommodations and Prompt service. Large Sample Rooms for Commercial Travelers. Phone 7 Cor. First and Washington Sts. Albany, Oregon.

The Spokane

(European Plan.) The Leading Hostelry in the State of Washington. Headquarters for the Traveling Public Special Sample Rooms with Arc light. 50 NEW BATH-ROOM SUITES. Elegant Public and Private Dining Rooms. SPOKANE, WASH.

THE O. T. DINING ROOM

E. H. OTEY, Proprietor. All Trains Stop 30 Minutes FOR MEALS. One of the finest places at the depot for meals. We always have chicken supper. Headquarters for the traveling public. Oysters in any style. Roseburg, Oregon



THE SCENIC HOTEL OF THE WORLD. This magnificent tourist hotel is Seattle's most prominent architectural feature—being situated upon the highest point of land in the downtown district—300 feet above sea level. It is, however, easy of access by private tramway, by regular hotel conveyance, by street car or by carriage. The scenery from The Washington is the most superb to be found on the Pacific coast. The appointments and furnishings of The Washington are entirely modern and high-class; the cuisine and service are most satisfactory. The rates are exceedingly reasonable for a fashionable Tourist Hotel. The Washington is situated in the midst of six acres of beautiful grounds, which with the broad driveways, green lawns, and a profusion of roses and carnations, make the location an ideal one. The scenery from The Washington and grounds is unsurpassed in the West—no other point in Seattle giving such a magnificent view as can be had from this hotel. President Roosevelt was charmed with the scene that met the eye, from the verandas and grounds of the hotel, and so expressed himself. Thousands of others, in public and private life, have come and gone since the opening of this grand hostelry, who have added their tribute to the many expressions of pleasure and satisfaction derived from a glimpse of the Puget Sound country from this vantage ground, including as it does a view of mountains, lakes, Sound, harbor and all Seattle. Write for illustrated booklet.