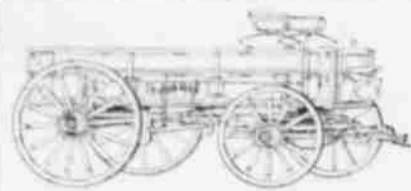


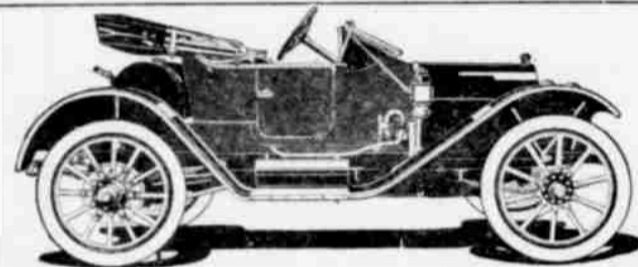
The retail price on Goodrich Tires has taken a drop of 15%. We cannot say how long this price will remain in force, but a word to the wise is sufficient. We have them in all sizes



Our Wagon stock is the largest you will find in the city. We carry the variety of sizes and makes—all standard.

We have on hand a carload of Mandt wagons, a carload of Studebaker wagons, several Milburn wagons, Davenport roller bearing wagons and orchard trucks.

Just keep your eye on the wagons that pass you on the road—ask a few owners what wagons they would buy if they were to buy again. Every wagon we have sold has become an "ad" for us—every owner a booster. We want your wagon business—you want our kind of wagons. Let's get together



Chalmers Motor Cars have made good in Hood River—Ask the owners.



No car on the market at the price gives so much value. You will find so many conveniences on Chalmers cars, that, if you take time to study several makes of cars, it will be nothing but a Chalmers for you.

The Chalmers "30" sells for \$1650, fully equipped, f. o. b. Hood River. The Chalmers "36" sell for \$2050, fully equipped. If you will call on us we will gladly demonstrate the car to you

We've installed a Kewanee System for one of our good customers on the East Side, and he wonders now how he ever got along without it. They are the most convenient and practical system you could ever wish for. You can have your own water system at very slight cost. Once installed, you would never part with it. Ask us

GILBERT IMPLEMENT CO.

UPPER VALLEY NOTICE
List your places for special attention with
WARD IRELAND CORNELL
Upper Valley Real Estate . . . Insurance
Improved and Unimproved Orchard Land
Hood River Connection Phone U. C. M. Ranch, Parkdale
GUY V. EDWARDS & CO. 77-Odell Upper Hood River Valley, Ore.

JOHNSON BROS. & HALE
GENERAL MERCHANDISE
Groceries, Furnishings, Shoes, Hardware, Etc.
Agents for Bane Wagons, Racine Hacks,
Buggies and Farm Implements
Phone 2032-M Pine Grove Grange Building VanHorn Station

REV. T. B. FORD IS CALLED POPINJAY

Rev. T. B. Ford of Oregon City, formerly pastor of the M. E. church here, was called a "popinjay" by a brother of the cloth at a ministerial conference in Portland last week in the course of which the atmosphere became somewhat heated and the doctrine of brotherly love was for the moment forgotten in the more important question of uniting the Methodist, Congregational and Presbyterian churches. The proposed union was not accomplished. On the contrary, accusations of "gerry-mandering," a preliminary tangle that got everybody "het up" red in the face and hot under the collar was about all that happened.

Dr. Ford was opposed to the action towards unity and spoke with so much feeling that his voice trembled. After a few moments of impassioned eloquence on the part of Dr. Ford, Rev. Mr. Cline interrupted him in order to remark that he didn't want the "next popinjay" to get up and talk so long.

Rev. Benjamin Young of Portland, a brother of W. B. Young of this city, took part in the debate that followed. He thought that the meeting had taken on too much the appearance of a kindergarten and so remarked. It was finally decided to postpone any final action until this week when the fight for harmony will be resumed.

Rev. Mr. Ford's resolutions provide in part for a commission to work with similar commissions from other Protestant churches to draft articles of religion that are in harmony, and would bring about a uniform system of church government.

MULTNOMAH GETS BUSY ON ROAD HERE

Believing that the new road proposed for team and automobile traffic between Portland and Hood River is one of the most important projects of the state, County Commissioner Lightner and other members of the Multnomah County Court have decided to begin work on the road with a force of from 50 to 75 county prisoners now confined at Kelly Butte. The commissioners visited the location of the proposed road last week and made a final selection of a camp. A stockade for the prisoners will be built.

The Hood River road at present extends from Portland to Multnomah Falls, where it is interrupted by rough country. It is proposed to continue the road 10 miles eastward to the Hood River county line, where it will be met by the road being built from this side. It is estimated that Multnomah county will complete the ten mile extension to the line within two years. There will be between 50 and 100 men continuously available on the work.

Tea=Tea=Tea

☞ If it's **GOOD TEA** you want you can find it here. We carry **Chase and Sandborn's Famous Boston Teas** in the following blends:

- Orloff Foamosa Oolong
- Orange Pekoe Celon & India
- Emperor's Blend Green and Black
- Private Estate Uncolored Japan
- Gunpowder, and English Breakfast

all in screw top cannisters. You'll be more than pleased if you try one of these blends.

THE STAR GROCERY

"GOOD THINGS TO EAT"
PERIGO & SON

Mount Hood Railroad

Time Table No. 12, Effective April 17th, 1912: A. M.

A. M. - South	North - P. M.
8.00 Hood River	3.10
8.05 Powerdale	3.05
8.15 Switchback	2.55
8.35 VanHorn	2.30
8.40 Mohrs	2.25
8.55 Odell	2.15
9.10 Summit	2.05
9.20 Bloucher	2.00
9.40 Winans	1.50
9.45 Ar. Dee	Lv. 1.45
10.15 Lv. Dee	Ar. 1.25
10.25 Troutcreek	1.20
10.40 Woodworth	1.05
10.50 Ar. Parkdale	Lv. 1.00

Sundays, north bound train will run two hours late, above schedule, leaving Parkdale 1 p. m.
A. WILSON, Agent.

COUNTRY PLACES BEING BEAUTIFIED

L. M. Thelen, the landscape gardener, reports that a number of country places in the valley are being beautified this summer. Walter Kimball has done some extensive work along this line on his place, which has been made one of the most attractive in the valley. A feature of the ornamentation has been the planting of native shrubs, with which Hood River's hills abound. These have given an immediate effect. Several good-sized trees, including yews, firs and hemlocks were also transplanted.

M. M. Hill is another who has been adding a few touches to Dame Nature's countenance. His attractive residence has been given a becoming setting through the use of nursery shrubs, which include a number of chinquapins, one of the native varieties which is particularly adapted for ornamental purposes. A large rose garden has been planted south of the house. Mr. Hill intends to do further ornamental work in the future.

Wilson Fike is having elaborate plans prepared looking towards the improvement and beautifying of the grounds surrounding his place. These include nearly two acres and are to be laid out in a winding drive, paths, lawns, decorative plantings of shrubbery and flower gardens, all planned with a view to securing a harmonious whole when it shall have been completed.

Look up the offer of the True-to-Name Nursery elsewhere in this issue if interested in getting some good trees cheap. They have been in the business for 15 years and know what good trees are.*

It pays to advertise

MILL AT DEE OPENS FOR SEASON'S RUN

The mill of the Oregon Lumber Company at Dee reopened for the season's run Monday. The same force will be employed as last year and the reopening of the mill means that employment will be furnished between two and three hundred men. A preference will be shown, in the employment of help, for men with families, as the company has found that these are more dependable and frequently remain to make their home in the attractive section about Dee. The company has made a point in the past of encouraging its employees to purchase home sites and help develop the land.

Reports from the lumber industry recently are to the effect that the market is showing rapid improvement and the future of the lumber business is brighter than it has been for some time.

The News for good printing.

C. F. SUMNER
Opposite the Post Office
Home Phone 20

Spray and Garden Hose Plumbing

Order Your Apple Racks!

☞ You will sure need them when you market that big crop this fall, and by placing the order now you will not have to worry about being prepared to bring your fruit to market. We also repair old racks. **DO IT NOW!**

☞ We would also remind you that we are equipped to do Manufacturing and Repairing work promptly and satisfactorily.

☞ One of our specialties is the manufacture of tools and appliances for orchard use, as well as Grubbing and Logging Tools, Wedges, Sledges, Hooks, Blocks and all kinds of Wood and Iron Work.

Plowshares Sharpened, Wagons Repaired
Implements of all kinds put in first-class working order

☞ No job too big or too small for us to take care of with a positive guarantee of satisfactory work.

W. G. SNOW
Phone 62-K Fourth Street

FINE TREES CHEAP!

☞ To those contemplating planting this spring or next fall, now is an opportunity to get some first class Apple Trees at greatly reduced prices, owing to the fact that one of our customers is unable to get his land ready for planting and has instructed us to sell the trees he had ordered. These consist of 8000 Yellow Newtown, 3-4 and 4-6; 2000 Ortley 3-4 and 4-6, one-year-buds and any reasonable cash price will be considered. These trees are all grown by the True-to-Name Nursery and are all guaranteed by them. Address,

True-to-Name Nursery
PHONE 2002-K HOOD RIVER, OREGON