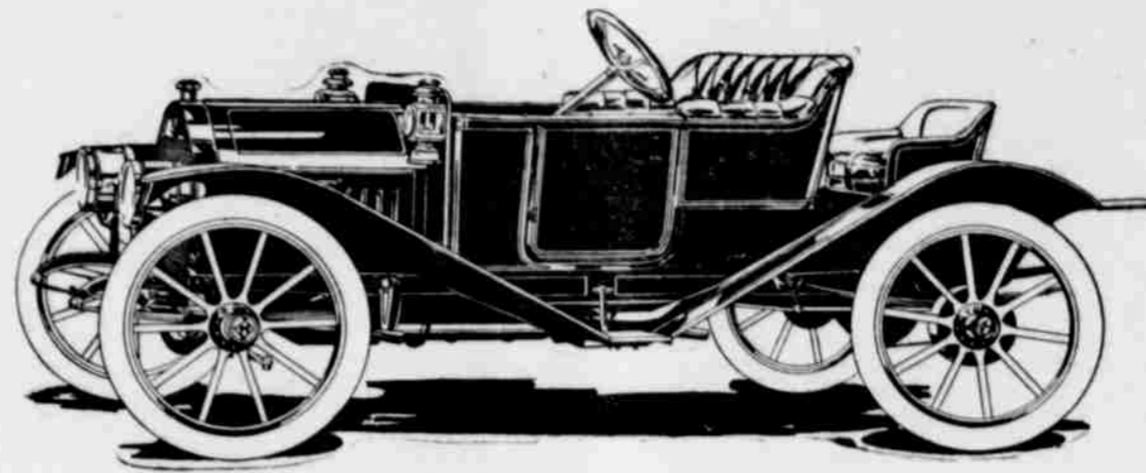


# Here at Last Is the Runabout You Have Been Looking For



**The New Herreshoff Twenty-Five Horsepower Runabout Embodies All the High Grade Features Found only In High Priced Cars--Motor En Bloc--Unit Power Plant --Three Speeds and Reverse--Multiple Disc Clutch--Bosch Magneto--Nickel Steel Gears--A Beautifully Finished, Luxuriously Upholstered, Refined Roadster--Built Like a Three Thousand Dollar Car--Electric Lighted Throughout and Sells in Hood River for \$1050.00.**

FOR SEVERAL YEARS THERE HAS BEEN A VERY HEAVY DEMAND FOR A REAL RUNABOUT AT A MODERATE PRICE. This demand has never heretofore been quite satisfied. There have been runabouts marketed at all prices, but the low-priced runabout did not have quite the finish and attention to detail that you have been looking for; and the runabout that did satisfy your taste was too high priced.

HERE AT LAST IS THE CAR at a moderate price that has all the features and attention to details that anyone could ask.

IT HAS THE POWER. Twenty-five horsepower in a car of light weight means ample power for all hill work and plenty of speed on the level. This car has been designed by Charles Frederick Herreshoff, who has probably designed more successful motors, both for marine and automobile work, than any other designer. Herreshoff does not know how to design cheap motors—he does not know how to design a cheap car. Every detail, every feature, from a mechanical as well as an artistic standpoint, is right.

YOU MUST NOT CONFOUND THIS RUNABOUT WITH ANYTHING ELSE YOU HAVE EVER SEEN IN A LOW PRICED CAR. The motor is cast en bloc, four-cylinder, vertical water cooled, developing twenty-five horsepower. The pistons are ground and fitted with three ground rings. Cylinders, Pistons and Rings are lapped together with polished agent to obtain perfect fit. Crank Pin bearings and wrist pins are bushed with Herreshoff special bronze.

THE ENTIRE POWER PLANT, RUNNING GEAR AND BODY OF THIS NEW RUNABOUT IS UP TO THE MINUTE. Nickel steel is employed wherever possible and the castings for cylinders and pistons are the best that can be procured.

VALVES—Inlet and exhaust valves on the same side of the cylinders, mechanically operated and interchangeable. Cam shaft enclosed in the crank case, thoroughly protected from dirt and certain of lubrication.

CRANK CASE—The crank case is cast of special semi-steel in two horizontal sections. The uppermost section forms the engine base, and is supported on the sub member of the main frame of the car. Bottom section is an oil well easily removed for inspection, without disturbing crank shaft bearing.

CARBURETOR—Carburetor is the Stromberg Carburetor, with primary air intake shut off for starting in cold weather.

MOTOR COOLING is by water circulation, thermo syphon system. Forced draft by fan.

IGNITION is supplied by the new flat wave Bosch magneto.

THE CLUTCH is the Herreshoff type multiple disc, 30 plate steel on steel.

TRANSMISSION is of the selective type, three speeds forward, and reverse. Nickel steel of special alloy is employed.

CONTROL OF THE CAR IS THOROUGHLY UP-TO-DATE. Left-hand drive, with center control. Foot accelerator, as well as throttle on wheel.

SPRINGS ARE LARGE AND FLEXIBLE, 34-inch front springs and 42-inch rear springs, shackled at both ends. Grease cups provided on all spring bolts.

THE BODY IS THOROUGHLY UP-TO-DATE. It is constructed of sheet steel panels over wood frame work. The seats are upholstered in black No. 1 leather over curled hair, with spiral springs throughout. Pockets between the seats for goggles, gloves, etc.

THE CAR IS PROVIDED WITH ELECTRIC HEADLIGHTS equipped with 16 C. P. Tungsten bulbs. Electric rear tail lamp. Current is supplied from a 60-ampere storage battery, or if you prefer gas headlights, we will supply optional two gas headlights, with gas generator, and oil tail lamp.

THIS IS THE CAR THAT YOU WILL BE PROUD TO OWN. A car which you will be proud to drive—that you will not apologize to your friends for its appearance or performance.

THIS RUNABOUT WAS NOT SELECTED BY US IN A HURRY. It is the result of several weeks' careful study of the runabout situation, and after a thorough test had been made of various makes of runabouts. It is a car which we can thoroughly vouch for—it is a car which we can thoroughly back up.

**Our 1912 Chalmers "30" Will Arrive About August 1st. This Car, Fully Equipped with Ventillated Fore-Doors, Mohair Top, Glass Front, Magneto, Presto-lite Tank, Gas Lamps, Side and Tail Lamps, Horn, Tools and Jack Will Sell for \$1650.00 in Hood River.**

**Our 1912 Chalmers "36," Equipped with Self-Starter, 36x4 Demountable Rims, Magneto, Full Equipment of Lamps and Presto-lite, Horn, Tools and Jack Will Sell for \$1950.00 in Hood River. Top and Glass Front \$100 Extra.**

**This Car will arrive the latter part of August. Think what this Car means---36 horse-power, four speeds forward, self-starting device, demountable rims---what more could one ask?**

---



---

## GILBERT-VAUGHAN IMPLEMENT COMPANY