



MEN'S SUITS

You want your clothes to look right; that's the only way to have them feel right. You want them to look as right to others as to you. That means that you'll have to buy

HART, SCHAFFNER & MARX clothes and that means here; and that means satisfaction in quality, style, fit, tailoring and price. H. S. & M. suits \$18.00 and up

OVERCOATS \$16.50 and up
Other makes of fine grade of all wool goods, newest weaves and patterns for \$8.00, \$10.00, \$12.00, \$15.00

We also have some extra specials in the line of Men's and Boys' Suits that will surely be worth your while to investigate. Think of buying a man's suit, coat, vest and pants for the small sum **\$2.98**

Ladies' Neckwear

We have one of the finest lines of Ladies' Neckwear that has ever been displayed in the city. Silk and Persian Bows, new designs, your choice each **10c**

Double tab Jabots finished with Maltese insertion and crochet beading, some with pleated edge with fancy wash lace, choice **10c**

Fancy Net Jabots with bows, finished with wide German Val edging, some of fine lawn side pleated baby Irish insertion; a very large assortment of all the newest designs and your choice, each **25c**

Ladies' Imported Needlework turn over Collars of fine Swiss Lawn, assorted new floral designs, your choice, each **5c**

Ladies' Linon Stocks and Bows with insertion, finished with fine crochet edging; net jabots small bows in back, your choice, each **25c**

Pointed Dutch Collars with round mesh, val insertion, some with jabots with Maltese insertion on jabots, each **10c**

Dutch Collars for ladies, with rows of baby Irish lace insertion and edging, square and round shapes with double tab jabots, all the very prettiest designs, your choice **25c**

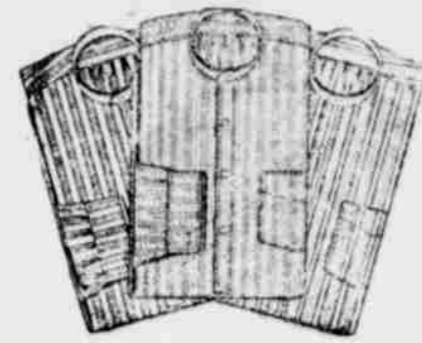
Boys' Suits Special

Here is certainly a big bargain in Boys' All Wool and Wool and Cotton Mixed Suits. This lot includes Worsteds, Serges, Cassimeres and Mixed Suitings in blues, greys, browns and blacks, ages from 10 years up to 16 years, and in values up to \$5.00 and \$6.00; straight bottom pants, your choice the suit **75c**

Boys' Pants Special

Boys' Wash Pants of cotton cheviot, straight bottom pants, ages 10 to 16 **10c**

Men's Dress and Work Shirts



We can certainly please you when it comes to the selection of a shirt, whether it be for dress or every day wear. Shirts of percale, madras, soisette and cotton cheviot, in plain and pleated bosom effect, with cuffs attached or detached, and some with soft French cuffs with collars attached or neckbands, in sizes 14 to 19. Shirts suitable for all kinds of wear. Men's Shirts for **25c, 35c, 45c, 50c and 75c and up including all Pure Silk Dress Shirts.**

We have one of the best lines of Ladies' and Children's Hose that can be found anywhere, ladies black, fast color, seamless, pr. **10c**



"DE-LIGHTED" is what "Teddy" will say when he calls to see you some evening. Of course you'll have to "show him" that it's

ELECTRICAL WIRING and bulbs from here that you are using. Great men the world over acknowledge the superiority of our work. Material used is always the best.

HAVE US DO YOUR WIRING

DEAN & SHAW

Office Phone 3
Residence 272M

KELLY BROS.
DEALERS IN

Hay, Oats, Rolled Barley Bran, Shorts, Straw

Fourth St., Bet. Oak and State. Phone 27-M

Hair Switches

From Your Own Combs
Satisfaction Guaranteed
Mail Orders Filled

MISS ELSIE BLOOD
R. F. D. No. 3
HOOD RIVER, - - OREGON

A. W. ONTHANK
NOTARY PUBLIC

Dealer in CITY PROPERTY

Legal Papers carefully drawn.
Money loaned on First Mortgages
Fire Insurance in best Companies.
Surety Bonds of all kinds.
Stenography and Typewriting.
Business promptly attended to.

305 Oak Street Hood River

Mount Hood Railroad

Time Table No. 12, Effective April 17th, 12:01 A. M.

A. M. - South		North - P. M.
8.00	Hood River	3.10
8.05	Powderdale	3.05
8.15	Switchback	2.55
8.35	VanHorn	2.30
8.40	Mohrs	2.25
8.55	Odell	2.15
9.10	Summit	2.05
9.20	Bloucher	2.00
9.40	Winags	1.50
9.45 Ar.	Dee	Lv. 1.45
10.15 Lv.	Dee	Ar. 1.25
10.25	Troutcreek	1.20
10.40	Woodworth	1.05
10.50 Ar.	Parkdale	Lv. 1.00

Sundays, north bound train will run two hours late, above schedule, leaving Parkdale 3 p. m.
A. WILSON, Agent.

THE PARIS FAIR, The Store That Saves You Money

NAVAL DESERTERS.

They Face Fine, Imprisonment and Loss of Citizenship.

Every time a fleet of naval vessels visits port there are sure to be a number of desertions. These come about from various causes, and among the deserters is always a large percentage of recruits that come from inland states. To these young men the confinement of a ship and daily drills soon become irksome. This, added to seasickness, to which they are almost invariably subject, produces an irresistible desire to desert. In other instances desertions come about through the men becoming intoxicated and practically irresponsible while on shore leave. In the meantime their vessel may sail. These men are not at first termed deserters, but are set down as stragglers. If, however, after a period of ten days nothing is heard from them by the ship's officers they are then considered deserters.

At the end of the ten day limit their allotment is stopped, the bureau of navigation is notified, and, in conformity to an act of congress, their effects are sold before the mast. The amount realized is placed to their account and the latter transferred to the deserters' roll. At the end of six months, if they still have not been heard from, their wages are declared forfeited to the United States. The penalty for desertion is fine and imprisonment as well as loss of citizenship.

The reward for the recovery of a deserter may not exceed \$20, and for a straggler the limit is \$10. This sum, together with any expenses incurred by the person capturing and delivering a deserter or straggler, when it is paid by the government is charged against the account of the man. If the enlisted man finds he has been left ashore and if he really had no intention of deserting he may report to the nearest naval station or if in a foreign country to the United States consul. When this is done he is immediately taken off the deserters' roll and accounted merely as a straggler, the punishment for which as a rule is light.—Marine Journal.

FEARED A TRAP.

A Bit of Japanese Strategy That Deceived the Enemy.

Many a man has failed to guess an easy riddle because the simple solution looked like a trap to him. Here is an instance in which this trait of human nature was cleverly played upon by a Japanese nobleman.

The old lord had been forced to flee with only 300 men before an enemy with 10,000 and barely had time to reach his castle ahead of his foes. There were no re-enforcements near at hand, and he knew that if an attempt was made to storm his defenses he and his men would be dead before help could come.

The enemy's forces advanced rapidly, and scouts rode up near the castle to reconnoiter. To their amazement, they found the gates, doors and windows open and all the appearance of a holiday celebration. They rode hastily back to inform their master that the foe was dancing and that bands were playing music in the castle.

The powerful enemy was too wise a man to put his head into any such trap as that. The defenders of the castle must have some plan to slaughter his forces by wholesale or they would never invite him in that way. He drew back to a safe distance and encamped to await developments.

Soon the re-enforcements for the castle came up behind, attacked him suddenly and defeated him, while the garrison, which had risked all on its stratagem, charged him on the other side.

Copy for advertisements must be in the office by Monday noon.

DOING THINGS AT LYLE TOWNSITE

Under the auspices of Keasy, Humason & Jeffery, who are handling the Lyle townsite proposition, another excursion was run from Hood River to Lyle Sunday, personally conducted by A. L. Fleming, who, with J. G. Rainey, is handling the property at Hood River.

The party went to Lyle on Dean & Shipley's new steamer, the Ollie S., and report a very pleasant trip. The new craft is a beauty and made the 12 mile trip from Lyle to Hood River in 45 minutes.

It needed only a glance at the new townsite to see that things are moving there. The entire new town, and also the old, is staked out in blocks and streets, and street grading is being pushed so rapidly that the teams and men are being worked on Sunday.

Building restrictions have been placed on those who buy lots in both business and residence sections, and are being rigidly adhered to. One part of the new site has been taken by the Arlington Club, of Portland, which will build a country club house on it, and several other choice sites are being reserved for various purposes. A school building will be erected, ground having been donated by the company, and in the business section several manufacturing sites have been bought.

It is expected that Lyle will become the metropolis for a large section of the lower Killekat valley and also the Camas prairie country, on account of better road facilities and easier grades. Another party will be taken to see the property next Sunday, particulars about which can be learned at the Hotel Oregon.

AUTO CLUB TO PUSH PORTLAND HIGHWAY

At a meeting of automobile owners and others interested in the Portland highway, held at the Commercial Club rooms Monday night, great enthusiasm prevailed and a strong organization was effected. The main purpose of the new organization is to secure better roads and primarily to work for the completion of the projected highway between Hood River and Portland.

After a discussion of the matter, during which all present gave assurances of their support of the project and also that they would work in conjunction with the efforts of the Commercial Club, the Realty Board and the County Court the following officers and board of managers was elected: President, Leslie Butler; Vice President, P. S. Davidson; Secretary, W. T. Sleddon; Board of Managers, J. Adrian Epping, C. K. Marshall, W. L. Clark, J. H. Hellbrunner and Albert Sutton.

125 ACRES SOLD IN MOSIER VIEW TRACT

Devlin & Firebaugh, selling agents for the Hood River Orchard Land Company, report the sale of 125 acres of Mosier View orchards during the first 10 days of the month. There were 17 different buyers of five and 10 acre tracts, the whole involving an investment of between \$25,000 and \$70,000. Quite a number of the buyers are recent arrivals from the east, who after making an investigation of the Hood River district decided to locate there.

The Rose of Eden at the Monroe Theatre tomorrow evening.

WORK STARTED ON NEW SPROAT BLOCK

Work was commenced Monday on the new Sproat block which will adjoin the Elliot building and will conform to the latter in architecture.

The new building will be two stories and basement, 100 feet deep by 50 feet wide. The front will be of yellow pressed brick with double show windows on both floors and when finished the entire building will be occupied by E. A. Franz. The top floor will be devoted to carpets and furniture and the rest of the building to other articles connected with the hardware, crockery and furniture business.

The construction of the building, which is in charge of Architect R. B. Bartlett, will be pushed and it is expected to have it finished and filled with stock by Sept. 1st.

Baptist Church Notes

Mr. Hargreaves will preach both morning and evening.

Morning worship at 11 o'clock. Subject of sermon, "A Model Sunday School". Evening praise service at 8 o'clock.

For Sunday evenings a series of sermons is being prepared on the theme "The Man of Sorrows", the same being a discussion of the simple life of that world famous one who never led an army, wrote a book nor held a political office. Wherein was His immortal influence? A cordial invitation generally extended.


Big Dance at Mt. Hood

A big dance is advertised to take place at Mt. Hood hall, May 26th, under the direction of the Good Times Club. Music will be furnished by Newman's orchestra. Tickets \$1.50, including supper.*

The ladies of the United Brethren Church will meet with Mrs. J. R. Nickelsen at Alderbrook Friday afternoon of this week. For particulars they are requested to phone Mrs. C. S. Jones.

If you belch up a bitter tasting liquid it is a sign of bad digestion. A dose or two of Herbine will correct the disorder. It stimulates digestion and purifies the bowels. Price 50c. Sold by Chas. N. Clarke.*

TO-DAY



To-day and every day, let us fill your PRESCRIPTIONS. With the correct DRUGS of greatest power, a moderate equipment, and long training we surely can and do give the best results in Prescription Compounding always.

Chas. N. Clarke
GLACIER PHARMACY

Hood River :: :: Oregon

Announcement

WE wish to announce to our friends and former customers that we have bought the Grocery Business of Smith Bros. where you can find us at all times with a large and complete stock of everything in the Grocery line at prices that will interest you. We will continue the business under the same policy established by Smith Bros. --- strictly cash to all. By eliminating the expense of delivering, bookkeeper's salary, and the loss of bad accounts, which is a part of the credit business, we are enabled to sell you goods at prices that will save you money. Watch our ad. for bargains

L. H. HUGGINS

Whitehead's

Utah Land Plaster

Arsenate of Lead

Vitrol

Lime and Sulphur Solution

Lime

Seed Oats

Vetch

Whitehead's