



BE WISE

Agitate your gray matter. Don't wait until you are all run down. Keep keyed up.

REXALL

BEEF, WINE & IRON

tones up the run-down system and maintains the tired-up system. It is tonic and food in concentrated, quick acting form.

It purifies and enriches the blood, increasing and maintaining those little red corpuscles that indicate vigor and sustained health—a rare insurance against malaria and chronic disease. It is remarkable in its effect in giving strength, energy and increased appetite. Pleasant to take and a most economical medicine to use. Large Bottles, 75c.

The Rexall Store

C. A. PLATH, DRUGGIST

Kent & Garrabrant

Confectionery, Cigars

Fishing Tackle

Spaulding's Sporting Goods

All Kinds of Soft Drinks

Oak Street, opposite Smith Block, Hood River.

M. NIGUMA

Japanese Novelties

Kutane and Tokyo Dishes.
Bamboo Furniture.

**EMPLOYMENT
OFFICE**

Oak Street, Corner 1st Phone 160

TREES FOR SALE

1000 Newtown, Ark. Blacks
and Spitzenburgs;
From 3 to 4 1/2 ft.

V. A. Crow, Near Tucker Bridge,
Phone 1922 M.

W. J. BAKER

Real Estate
Loans
Insurance

**APPLE AND STRAWBERRY
LAND A SPECIALTY**

Correspondence Solicited

The W. G. Aldred Co.

CONTRACTORS

EXCAVATING AND GRADING

Crushed Rock
and Gravel

HOOD RIVER, OREGON

O-W. R. & N. COMPANY

WEST BOUND

No. 9, Fast Mail (no passengers) 4:50 A. M.
No. 3, Portland Flyer 6:10 "
No. 7, Portland Local 7:15 "
No. 8, Oregon & Washington Express 8:50 "
No. 11, Soo-Spokane-Portland 9:25 "
No. 1, Portland Local 3:25 P. M.
No. 17, Chicago Limited 5:45 "

EAST BOUND

No. 12, Pendleton Local 10:30 A. M.
No. 19, Oregon and Wash. Limited 11:45 "
No. 8, The Dalles Local 6:20 P. M.
No. 10, Fast Mail, no passengers 8:25 "
No. 6, Oregon & Washington Express 9:20 "
No. 12, Soo-Spokane-Portland 10:55 "
No. 4, Walla Walla Passenger 12:55 "

Trains number 3, 5, 11 and 17 make no stops between Hood River and Portland. Passengers for local points must take trains 7 and 1.

Train 4, 12 and 18 stops only at The Dalles, Arlington, Umatilla and Pendleton. Passengers for points between Hood River and Pendleton must take trains No. 2, 6 and 8.

For further information inquire at ticket office
J. H. FREDRICK, Agent.



Where We Get Off

in selling a little better character of groceries at the same price as others charge for inferior goods is in your continued satisfaction. It is no accident that our business keeps growing. It is owing to our plan of giving you better service than you get elsewhere.

Just try "Gold Medal Butter"

The Star Grocery

"Good Things to Eat"

PERIGO & SON

**Miss Maree Comini
MANICURING**

Room 7, McCan Building,
HOOD RIVER, ORE

MT. HOOD RAILROAD

TIME TABLE NO. 9
Effective 12:41 A. M., October 9th, 1911

Southbound	Stations	Northbound
A. M.		P. M.
8:00	Hood River	4:00
8:05	Powderdale	3:55
8:15	Switchback	3:45
8:35	Van Horn	3:15
8:40	Mohrs	3:10
8:55	Odell	3:00
9:10	Summit	2:50
9:20	Bloucher	2:45
9:40	Winans	2:35
9:45 Ar.	Dee	Lv. 2:30
10:30 Lv.	Dee	Ar. 2:00
10:40	Troutcreek	1:55
11:00	Woodworth	1:35
11:15 Ar.	Parkdale	Lv. 1:30

A. WILSON, Agent

C. F. SUMNER

Opposite the Post Office
Home Phone 20

**Spray and
Garden Hose
Plumbing**



"DE-LIGHTED"

is what "Teddy" will say when he calls to see you some evening. Of course you'll have to "show him" that it's

ELECTRICAL WIRING

and bulbs from here that you are using. Great men the world over acknowledge the superiority of our work. Material used is always the best.

**HAVE US DO
YOUR WIRING**

DEAN & SHAW

Office Phone 3

Residence 272M

International Wrangle Over New Railway



THE project of the Bagdad railway has become an international wrangle in Europe, and it is asserted that considerable diplomatic soothing will be necessary before construction is started.

This railway was one of the important subjects discussed by the czar and the kaiser on the occasion of the former's visit to Potsdam, and the result, according to the German press, is that Russia has been persuaded to desert.

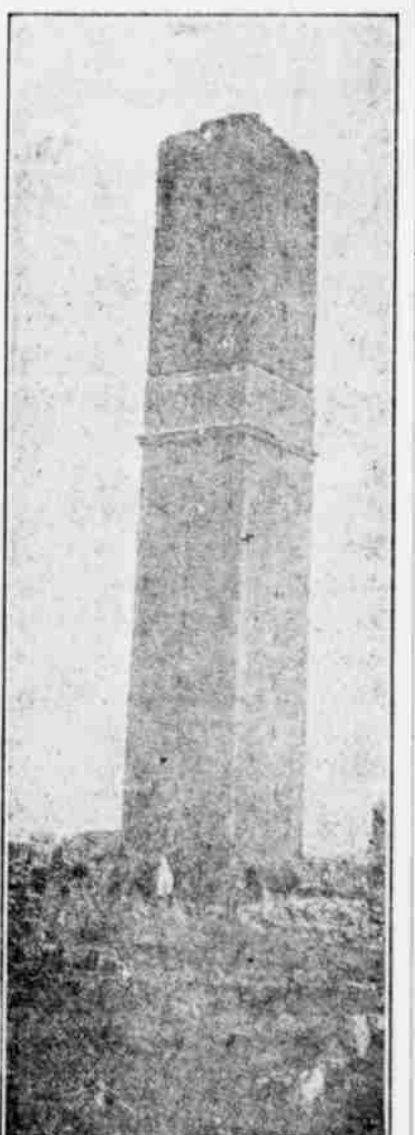


Great Britain and France and form an alliance with Germany. The latter has obtained Turkish sanction to complete the railway to Bagdad, and it will be Russia's duty to construct a line to the frontier of northern Persia.

By the original scheme the German and French capitalists were to participate financially in the respective proportions of 60 and 40 per cent.

Although the Turkish government has given its consent to the completion of the road to Constantinople by Germany, there is considerable feeling in the Turkish empire against Russia's maneuvers, which practically forced the sultan into line.

The Bagdad railway is the revival of the old idea of connecting the Mediterranean with the Persian gulf. One portion, the Ereğli-Burgulu section, has been constructed with little dif-



ANCIENT TOWER OF BABEL.

ficulty. The next one, through the Taurus mountains, will involve great expense, it is believed. The route lies through the pass known as the Cilician gates and the Amanus gate. After piercing the Taurus the route lies for hundreds of miles along the Mesopotamian plain via Mosul and Bagdad to Koweit, on the Persian gulf.

But the English are likely to discount the importance of the Bagdad railway as a means of communication between India and Europe, as they are projecting a direct transpersian route. Moreover, the British government is likely to be consulted before the Bagdad road is definitely settled upon.

Many scenes of historic interest will be placed within travelers' reach by the Bagdad railway, such as Nebekah's well, Nineveh and its ruins and Babel, with its ancient tower, the latter being a remnant of the temple erected by Nabunaid, the last Babylonian king. It is located near the scene of the defeat of Crassus and his Romans by the Parthians.

IN THE APPLE WORLD

CLAIMS SUPERIORITY FOR WENATCHEE

That traders and distributors of apples regard the fruit of the Wenatchee Valley as better than that of Hood River, Oregon, says the Wenatchee Republic, is evidenced by a letter received today by the Wenatchee Daily Republic from Rae & Hatfield, of New York.

Rae & Hatfield are one of the oldest and most prominent apple distributing firms in the United States. They import and export all kinds of fruit, and make a specialty of high grade apples. In their letter to the Daily Republic they comment on the superiority shown on the eastern market by Wenatchee Spitzenburgs over Hood River fruit of the same variety, and add that the Wenatchee Spitzenburgs and other varieties grown in this valley are in a class by themselves. Their letter follows:

"New York, March 17, 1911.
"The Wenatchee Daily Republic,
"Wenatchee, Wash."

"It might interest the readers of the Wenatchee Daily Republic to know that in the past week there have been several cars of Hood River valley fancy Spitzenburgs sold by public sale here. The first car averaged around \$2.00, sizes from 54s to 96s; the second car prices ranged from \$1.55 to \$1.95 for the same run of sizes, and averaged \$1.65 for the car. On the same day there arrived a car of Wenatchee Valley Fruit Growers' Association Spitzenburgs, which sold from \$2.50 to \$2.75 as to sizes. The Hood River fruit had every appearance of being held too long, which was in sharp contrast to that of the Wenatchee fruit, which showed exceptionally fine quality indeed, and which naturally accounts for the difference in prices realized. This speaks volumes for your section as far as this particular variety is concerned. Of course, the Wenatchee Spitzenburgs and other varieties are in a class by themselves, and usually realize correspondingly high prices.
"Yours very truly,
"RAE & HATFIELD."

WANTS PRODUCE MEN TO SIT ON SOMETHING FLAT

"It seems to me," says a big produce dealer in the east, "that it would be well if every produce dealer in the country would buy himself a big dairy. Commence with last April and write up a history of the movements, trouble or losses that butter and eggs will lose in the early winter of 1911 and whenever a bull feeling comes over you, read it carefully. This reminds me of a little story. In a town in southern Michigan, where I was raised as a boy, lived a peculiar kid named H. B. He had an aunt as peculiar, because she was about as large one way as the other. H. B. and his mother visited his aunt in the country and the aunt tried to be good to H. B. by trying to hold him on her lap. The boy kept slipping down and the aunt kept 'hunching' him up. Finally he got tired of slipping, so he yelled out: 'Ma, I want to sit on something flat.' Now, produce dealers, egg and butter storers, wouldn't it be well this year to sit on something flat?"

Apple Market Better
The Produce News this week says that the demand for barreled apples is more active and there is some advance on strictly fancy fruit. Baldwins and Greenings, which are about the only barreled stock here, take a wide range, many Greenings showing scald. Fancy to extra fancy Baldwins sell \$5.00; Greenings, \$5.00 to 6.50. Greenings are scarce. Receipts are moderate at the pier and local storage holdings are pretty well cleaned up.

Boxed apples are in liberal supply, but the demand is enlarging and the trade is in better shape than for some time, although prices have not advanced. Fancy to extra fancy stock is selling \$2.60 to \$2.75. Receipts of late have contained more poor fruit than for some time. It is estimated by one dealer that 65 per cent of the stock offered this week was ordinary. Stock in weak condition is selling \$1.00 to \$1.25. There is little profit in the higher priced goods. Dealers say the consumptive demand seems to be more general this month, and they look for a great reduction of stock this month, followed by an advance.

The export business is about over. England will have an unusually large amount of Tasmanian fruit and the first cargo was due in London this week. London expects over 200,000 boxes in April and 680,000 boxes in all this season.

Chicago Apple Market Steady

There is a steady movement of apples from storage with an increasing volume and without any break. Dealers do not look for any advance.

Something In the Wind



Now, why not blow yourself off to an annual subscription to this paper?

SMOKING MEAT THE NEW WAY.

You don't need a smoke house. Apply WRIGHT'S SMOKE—a liquid—giving two coats, which will impart the rich aroma and delicate flavor of hickory smoke to the meat, keeping it round, sweet and insect free indefinitely. Sold for 14 years all over U. S. and Canada. Get the genuine. Fully Guaranteed. Sold only in square quart bottles with metal cap. Ask your druggist for "Wright's Smoke". Made only by
E. H. WRIGHT CO., Kansas City, Mo.
Sold and Guaranteed by
KEIR & CASS

Real Estate Bulletin

\$7500 10 acres one mile of city limits as follows: 8 acres in trees, some bearing, 2 acres pasture with running water, 1 acre berries between trees, barn, tools and 5 inches water. Terms One Half down.

\$6000 10 acres 3 1/2 miles out, house, barn, tools; 3 1/2 acres full bearing, 3 1/2 ready to plant, balance to clear. Easy terms.

\$10,500 9 acres close in, fine house, barn, horse and all tools. Two acres berries between trees, nearly all set to one and two year old trees, Spitz and Newtown, also some bearing. This is one of our best bargains. Owner on account of sickness must sell.

G. Y. EDWARDS & CO.
Office Oregon Hotel Building
PHONE 228

Whitehead's Utah Land Plaster

Arsenate of Lead

Vitrol

Lime and Sulphur Solution

Lime

Seed Oats

Vetch

Whitehead's

FOR SALE

Some of the best

Apple Land

In Washington

Improved and unimproved; small or large tracts; easy payments; near Goldendale, Wash. A solid block of 160 acres set to winter apples.

G. W. DAVIS

Goldendale, Klickitat County, Wash.

The Great Piano Contest

IS NOW ON

\$1330 Worth of Pianos Given Away

Five Chances to get a Piano

One half cent a vote. Any cash spent for groceries counts for whoever you wish to vote. Get your friends to vote for you when they buy groceries at our place. Come in and get particulars.

Yours for business,

WOOD'S GROCERY

FISHING TACKLE

BLOWERS HARDWARE CO.