

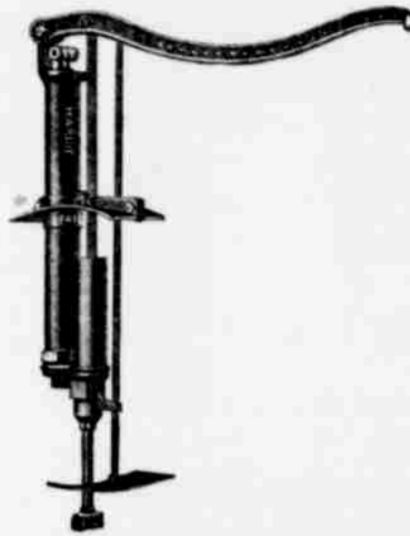
Bean Barrel Pump  
No. 70



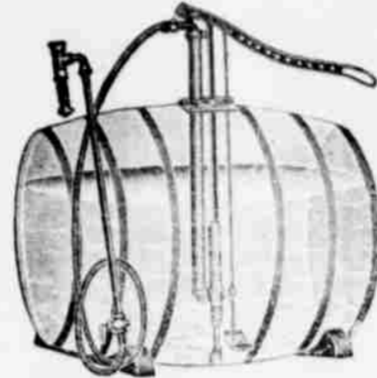
Hardie Barrel Pump  
No. 60



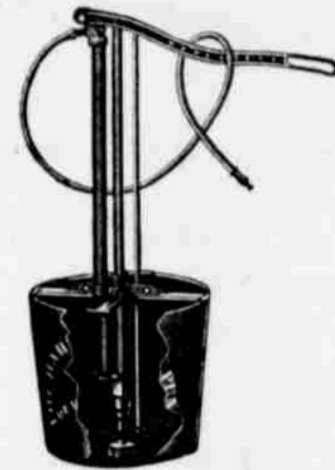
Bean Little Giant  
Barrel Pump



Hardie Barrel Pump  
Notice the Construction



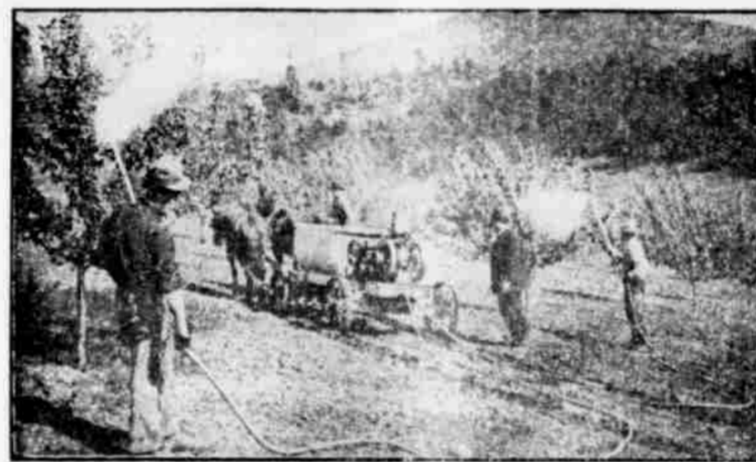
Hardie Barrel Pump  
Mounted Inside of Barrel



The Best Bucket Pump  
Ever Made



Nozzles  
of Every Description



The Hardie Power Sprayer at Work in a  
Hood River Orchard



Special Nozzles  
For Special Purposes



**Saves  
One-  
Third  
the  
Labor**

Wouldn't you like to cut your labor expense an even third? You can do it on your spraying—and this advertisement tells you how. What's more, the work will be done more quickly and better. Use

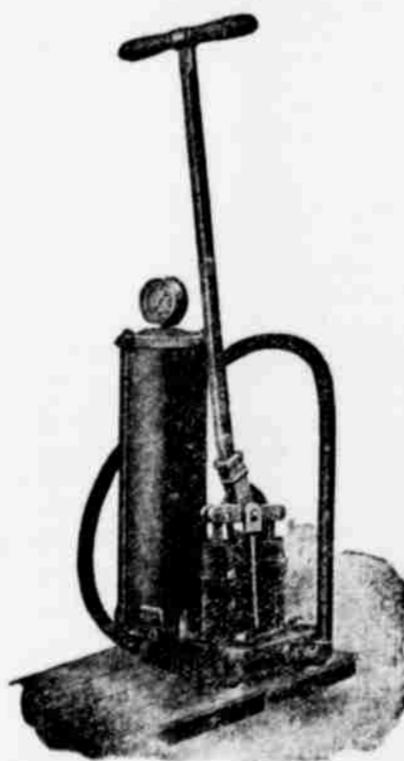
**Bean Magic  
Spray Pumps**

The Bean patent spring (shown in the cut), divides the work; the operator does half at each stroke of the handle, and works against but half the pressure indicated on the gauge. Bean Magics are built in two sizes; both have non-clogging ball valves, porcelain-lined cylinders, and other exclusive Bean features. They're the easiest running, least troublesome pumps on the market.

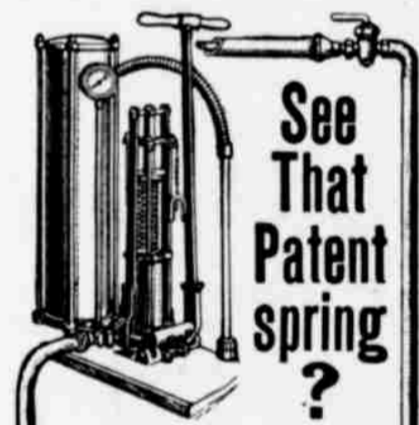
We have these pumps in stock and will be pleased to show them. We cannot recommend them too strongly.



We Sell Only One Grade of Spray Hose, and that is the Best that Money Can Buy



Hardy Twin Cylinder  
Hand Pump



**See  
That  
Patent  
spring  
?**

It means much to the fruit grower who realizes the need for effective spraying, but deplores the ordinary pump with its exhausting labor, its unsatisfactory spray and its continual clogging and bother. This spring is found only in

**Bean Magic  
Spray Pumps**

It would be found in others, but the Bean Patents prevent it. This spring divides the work, permitting the operator to do half the work at each stroke of the handle. And he works against but half the pressure indicated on the gauge. It saves just one-third the labor. Two sizes of Bean Magic pumps; both have Bean patent spring, non-clogging ball valves, and other exclusive features.

We have these pumps in stock and will be pleased to show them. We cannot recommend them too strongly.

**GILBERT-VAUGHAN IMPLEMENT COMPANY**

THAT'S ALL—THAT'S ENOUGH