

URGENTCARE NW - ASTORIA

a smartER alternative

**WE'RE OPEN
AND HERE
FOR YOU!**

Our **friendly** and **dedicated Physicians and Physician Assistants** are available for all of your **routine healthcare needs**, not just for emergency situations!

If you're suffering from a **headache, toothache, earache, backache, any illness or injury or on the job injury**, are in need of a **refill of your prescription medications**, or even a **sports physical or DOT physical**, our dedicated staff is here to assist you!

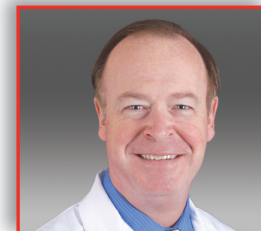
We are open 7 days a week. We are located in the **Park Medical Building East in Suite 111.** We accept most insurances, offer a cash discount and also accept the **Oregon Health Plan, WA Medicaid and Medicare.**



Sally Baker, PA-C



Kenyon Solecki, PA-C
habla español



Keith Klatt, MD

**RAPID COVID-19
TESTING AVAILABLE!**

503-325-0333 or Visit www.urgentcarenwastoria.com

We observe the following holidays & are closed on July 4th, Thanksgiving, Christmas & New Year's Day.

**We are currently serving
walk-in patients, same
day appointments**

HOURS: MON-FRI 7AM-7PM • SAT-SUN 9AM-7PM

2120 Exchange Street • Suite 111 • Astoria, Oregon

*Life happens...
That's why we're here!*

Express Healthcare for Busy Lifestyles