

Kid Scoop®

THE AWARD-WINNING PRINT & ONLINE FAMILY FEATURE



© 2022 by Vicki Whiting, Editor Jeff Schinkel, Graphics Vol. 38, No. 39

LET'S STOP LITTERING!



Hi, Kids!

You know me – I'm your friend, Earth. And there's something that really makes me sick. It's called **LITTER!**

Litter is stuff that should have been thrown into a garbage can or recycle bin, but is just dropped on the ground instead.

Litter causes all kinds of problems. It can clog up storm drains and cause flooding or pollute the waterways that are fed by storm drains. Some litter is dangerous, like broken glass and cans with jagged edges. And litter is ugly. When it's around your school or community, it looks like people just don't care about where they live.

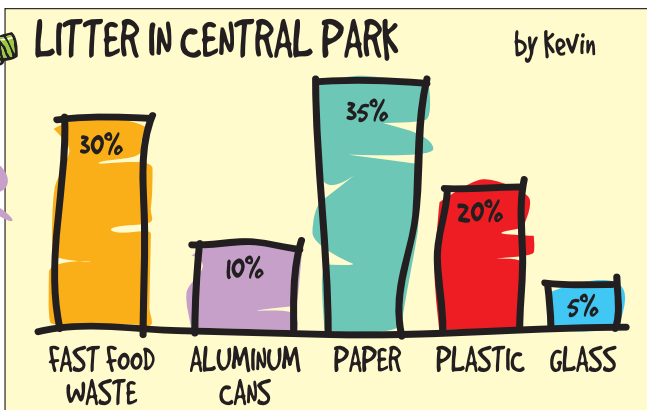
Your friend, **Earth**



Litter Statistics

Kevin's class picked up litter at the park. He made a chart showing the percentages of the kinds of litter they found. Use the chart to answer these questions:

1. What was the most common litter item found?
 - fast food waste
 - plastic
 - paper
2. Was there more glass or plastic in the litter?
 - glass
 - plastic
3. What percentage of litter was plastic and paper combined?
 - 55%
 - 45%
 - 40%



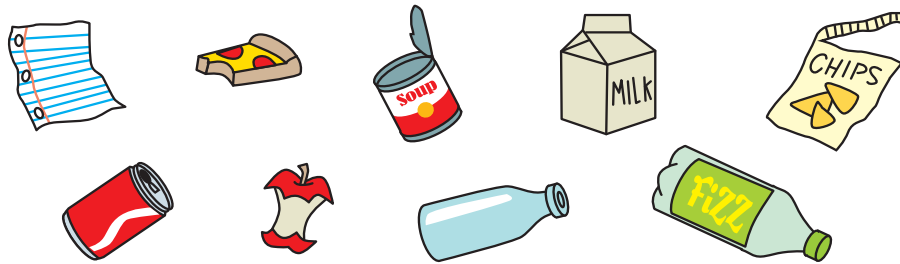
Lunchtime Litter

Look for litter in this picture. Can you find all of these items?

- plastic bottle
- plastic cap
- paper cup
- straw
- plastic fork
- paper
- chip bag
- cheese puffs
- soda can
- apple core

Sort the Litter

Some litter can be recycled. Draw a line from each piece of litter to the correct bin.



Extra! Extra!

Be Complete

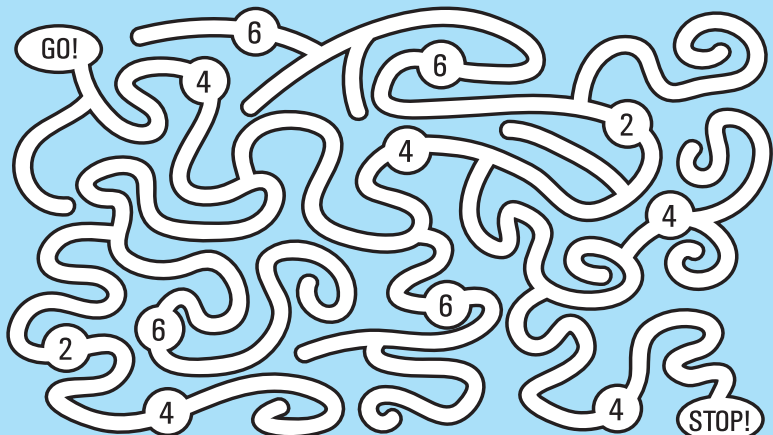
Search the newspaper for five headlines that are NOT complete sentences. Rewrite each as a complete sentence. Which words are most often left out?

Standards Link: Research: Use the newspaper to locate information.

Kid Scoop® Puzzler

Don't Be a Litterbug

What is the average number of steps a person will hold onto a piece of trash before they litter? Add up the numbers along the correct path in this maze to discover the answer.



Standards Link: Reading Comprehension: Follow simple written directions.

Double Double Word Search

- COMMUNITY
- DA NGEROUS
- PROBLEMS
- GARBAGE
- RECYCLE
- POLLUTE
- AVERAGE
- LITTER
- EATING
- DRAINS
- BROKEN
- STORM
- AREA
- UGLY
- SICK

Find the words in the puzzle. How many of them can you find on this page?



Standards Link: Letter sequencing. Recognize identical words. Skim and scan reading. Recall spelling patterns.

COLUMBIA RIVER MARITIME MUSEUM
1792 MARINE DR • ASTORIA

COLUMBIA VETERINARY HOSPITAL
576 31ST STREET ASTORIA
503-325-2250

Great Ocean DA YANG
Da Yang Seafoods LTD.

COLUMBIA RIVER BAR PILOTS
PROVIDING SAFE PASSAGE SINCE 1846

Lower Columbia Hospice
2158 Exchange St. | Suite 206 Astoria | 503-338-6230

S&F Land Services
1725 N. Roosevelt Drive Suite B | Seaside
503-738-3425

Northwest West Inc. Income Tax Preparation
762 Avenue G • Seaside, OR 97138
503-738-3480

Tires LES SCHWAB
McCALL TIRE CENTER
WARRENTON 861-3252
1167 SE Marlin SEASIDE 738-8243
2155 S. Roosevelt

HAMPTON LUMBER MILLS

Classic BODYWORKS
34747 Hwy 101 Bus. ASTORIA
503.325.0411

LEWIS & CLARK TIMBERLANDS™
MANAGED BY GREENWOOD RESOURCES®

Astoria's Best SOLUTIONS
77 11th Street, Suite H Astoria | 503-325-2300

Kevin Bros LAND & TIMBER
ASTORIA | 503-556-0410

Clatsop County FAIR & EXPO
92937 Walluski Loop | Astoria
503-325-4600

Bayshore Animal Hospital
325 Marlin Avenue WARRENTON
503-861-1621

CLATSOP BEHAVIORAL HEALTHCARE
65 N. Hwy 101 Suite 204 Warrenton
503-325-5722

Velazquez Painting & Construction
1159 South Wahanna Rd. #A Seaside
503-739-3055

Astoria Vintage Hardware
1162 Marine Drive Astoria
503-325-1313

North Coast HOME CARE
Home Oxygen • Medical Equipment
2230 EXCHANGE ST. | ASTORIA | 503-325-9906

NORTHWEST READY MIX
950 Olney Ave • Astoria
503-325-3562

Ship Out Seafood Restaurant
92351 Lewis and Clark Rd., Astoria • 503-468-0373

THE HOME DEPOT
1650 SE Ensign Lane WARRENTON
503-861-9999

LAWN & TRACTOR
34912 Business Hwy 101, Astoria
503-325-0792

Thankyou Teri Carpenter

River & Sea
757 W. Marine Dr. Astoria, OR
503-338-5200

ASTORIA GRANITE WORKS
QUALITY STONE WORK SINCE 1917
423 GATEWAY AVE. • ASTORIA | 503-325-0761

Home Furnishings
1033 Commercial Street Astoria, Oregon 97103
(503) 325-5620

Jonathon's, LTD
• Estate Jewelry • Diamonds
• Art • Antiques
332 12th St., Astoria
503-325-7600

COFFEE GIRL
100 39th St., Suite 2 Astoria
503-325-6900

EMERALD HEIGHTS
1 Emerald Drive, Astoria
503-325-8221

Premium ADJUSTABLE BEDS
ASTORIA • 503-325-1974

TERRY'S PLUMBING
Commercial & Residential 503-325-5180

SUZANNE ELISE
Assisted Living Community
101 Forest Drive Seaside
503-738-0307

TLC
A DIVISION OF Fibre Federal CREDIT UNION
85 W Marine Dr Astoria
2315 N Roosevelt Dr Seaside
1771 SE Ensign Ln Warrenton
www.tlfcu.org • 503.842.7523

QUACKENBUSH BUILDERS, INC.
Quality Construction from Design to Finish
503-440-2827

JJ ELECTRIC SERVICE
Quality Work at Affordable Rates
503-739-7145
712 S. Holladay Seaside, Oregon
www.jjelectricservice.com

Morgan Civil Engineering
PO Box 358 • Manzanita
503-368-6186

Thank you for supporting **NEWSPAPERS IN EDUCATION**

- Bergerson Construction
- Bridgewater Bistro
- Chinook Marine Repair Shop
- Randall Lees Flooring America
- Red Dwarf Graphx
- Seaside Visitors Bureau
- Subway