

Kid Scoop®

THE AWARD-WINNING PRINT & ONLINE FAMILY FEATURE



© 2022 by Vicki Whiting, Editor Jeff Schinkel, Graphics Vol. 38, No. 38

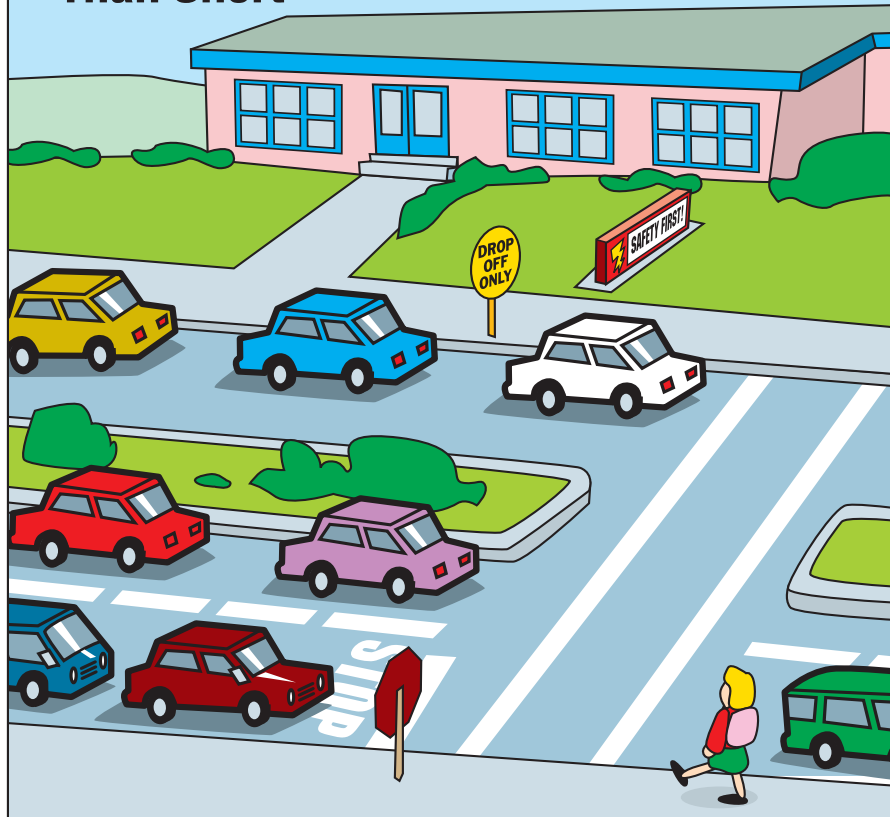


BACK TO SCHOOL ROAD SAFETY

Leave early so you don't have to hurry!

Safe is Better Than Short

Take the safe path to school, not the shortest one. Help Amy find the best path to school.



My Safety Story

Finish the sentences using these words:

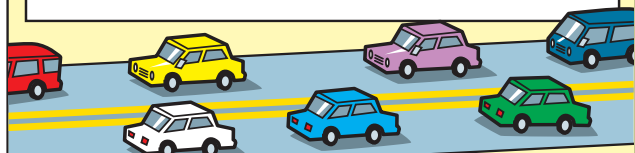
- CARS ALL BUCKLE CORNERS RUN WAYS
HELMET CROSSWALKS STREET CROSSING

My name is _____ and I take time to be safe. I always look _____ before _____ the _____.

I walk, and don't _____.

I never walk between parked _____ I cross streets only at _____ or _____.

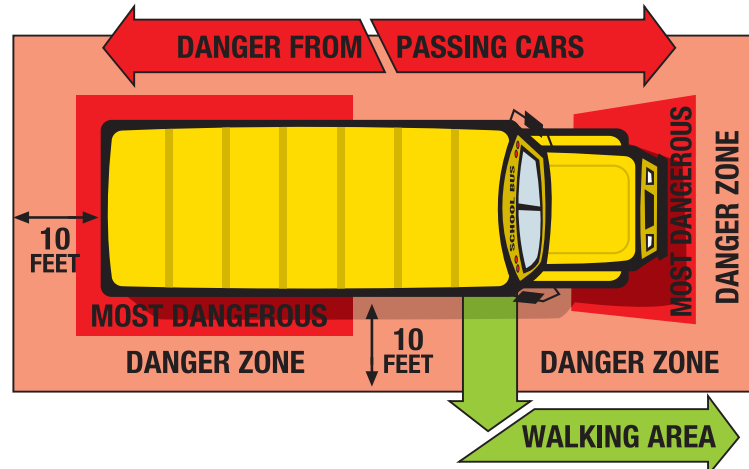
I _____ up when riding in a car and wear a _____ when riding my bike.



Know your bus danger zone!

Many children are injured each year while getting on or off school buses. This is because the bus driver cannot see certain areas around the bus. The danger zones are shown below.

Avoid these danger zones by always taking 10 giant steps away from the bus after you exit. Always wait for the bus driver or another adult to tell you when it is safe to cross the street.



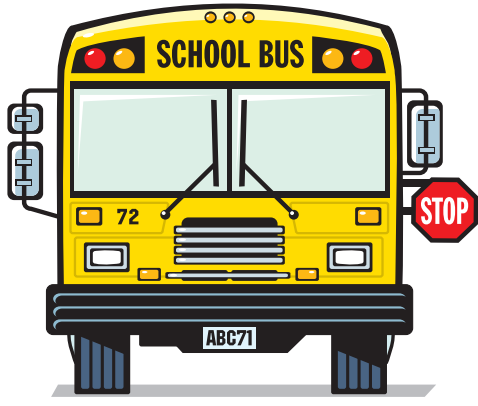
Extra! Extra!

Before and After Photo

Select a photo from the newspaper. What do you think happened before this picture was taken? What do you think happened after?

Standards Link: Reasoning: Students distinguish between observation and inference.

It's fun to be safe!



How many differences can you find between these two school busses?



Kid Scoop® Puzzler

Do the math to reveal these important car safety tips.

The back seat is the safest place to sit until age 3+3+2+5= _____

You're safer sitting in a booster seat until you are 2+2= _____ feet 3+3+3= _____ inches tall.

Standards Link: Number Sense: Calculate sums.

Double Double Word Search

- DIFFERENCE
CORNERS
BOOSTER
WALKING
SAFETY
DANGER
BUCKLE
HELMET
STREET
PARKED
RIDING
ZONE
SEAT
CARS
BUS

Find the words in the puzzle. How many of them can you find on this page?

B R T E E R T S U B
B S E A T E R E S T
U P S G M E Z A W F
C E A L N O T Y A G
K Y E R N A W T L N
L H O E K A D E K I
E C N E R E F F I D
Y S C A R S D A N I
R E T S O O B S G R

Standards Link: Letter sequencing. Recognize identical words. Skim and scan reading. Recall spelling patterns.

COLUMBIA RIVER MARITIME MUSEUM
1792 MARINE DR • ASTORIA

COLUMBIA VETERINARY HOSPITAL
576 31ST STREET ASTORIA
503-325-2250

Great Ocean DA YANG
Da Yang Seafoods LTD.

COLUMBIA RIVER BAR PILOTS
PROVIDING SAFE PASSAGE SINCE 1846

Lower Columbia Hospice
2158 Exchange St. | Suite 206 Astoria | 503-338-6230

S&F Land Services
1725 N. Roosevelt Drive Suite B | Seaside
503-738-3425

Northwest West Inc. Income Tax Preparation
762 Avenue G • Seaside, OR 97138
503-738-3480

Tires LES SCHWAB McCALL TIRE CENTER
WARRENTON 861-3252
1167 SE Marlin SEASIDE 738-8243
2155 S. Roosevelt

HAMPTON LUMBER MILLS

Classic BODYWORKS
503.325.0411
34747 Hwy 101 Bus. ASTORIA

LEWIS & CLARK TIMBERLANDS™
MANAGED BY GREENWOOD RESOURCES®

Astoria's Best SOLUTIONS
77 11th Street, Suite H Astoria | 503-325-2300

Kevin Bros LAND & TIMBER
ASTORIA | 503-556-0410

Clatsop County FAIR & EXPO
92937 Walluski Loop | Astoria
503-325-4600

Bayshore Animal Hospital
325 Marlin Avenue WARRENTON
503-861-1621

CLATSOP BEHAVIORAL HEALTHCARE
65 N. Hwy 101 Suite 204 Warrenton
503-325-5722

River & Sea kw SUNSET CORRIDOR
757 W. Marine Dr. Astoria, OR
503-338-5200

ASTORIA GRANITE WORKS
423 GATEWAY AVE. • ASTORIA | 503-325-0761

Home Furnishings
1033 Commercial Street Astoria, Oregon 97103
(503) 325-5620

Premium ADJUSTABLE BEDS
ASTORIA • 503-325-1974

TERRY'S PLUMBING
Commercial & Residential 503-325-5180

JJ ELECTRIC SERVICE
Quality Work at Affordable Rates
503-739-7145
712 S. Holladay Seaside, Oregon
www.jjelectricservice.com

Morgan Civil Engineering
PO Box 358 • Manzanita
503-368-6186

Velazquez Painting & Construction
1159 South Wahanna Rd. #A Seaside
503-739-3055

NORTHWEST READY MIX
950 Olney Ave • Astoria
503-325-3562

LAWN & TRACTOR
34912 Business Hwy 101, Astoria
503-325-0792

Jonathon's, LTD
• Estate Jewelry • Diamonds • Art • Antiques
332 12th St., Astoria
503-325-7600

SUZANNE ELISE
Assisted Living Community
101 Forest Drive Seaside
503-738-0307

Astoria Vintage Hardware
1162 Marine Drive Astoria
503-325-1313

Ship Out Seafood Restaurant
92351 Lewis and Clark Rd., Astoria • 503-468-0373

COFFEE GIRL
100 39th St., Suite 2 Astoria
503-325-6900

TLC Fibre Federal CREDIT UNION
85 W Marine Dr Astoria
2315 N Roosevelt Dr Seaside
1771 SE Ensign Ln Warrenton
www.tlfcu.org • 503.842.7523

North Coast HOME CARE
Home Oxygen • Medical Equipment
2230 EXCHANGE ST. | ASTORIA | 503-325-9906

THE HOME DEPOT
1650 SE Ensign Lane WARRENTON
503-861-9999

Thankyou Teri Carpenter
EMERALD HEIGHTS
1 Emerald Drive, Astoria
503-325-8221

QUACKENBUSH BUILDERS, INC.
Quality Construction from Design to Finish
503-440-2827

Thank you for supporting **NEWSPAPERS IN EDUCATION**

- Bergerson Construction
- Bridgewater Bistro
- Chinook Marine Repair Shop
- Randall Lees Flooring America
- Red Dwarf Graphx
- Seaside Visitors Bureau
- Subway