



# A destination for the Tiki-curious

Polynesian influence meets maritime folklore at new Astoria bar

BY PETER KORCHNAK

## Dead Man's Isle

1239 Duane Street, Astoria

Open from 4 to 10 p.m. on Thursdays,  
4 to 11 p.m. on Fridays and Saturdays  
and 4 to 10 p.m. on Sundays

[www.deadmansisle.com](http://www.deadmansisle.com)

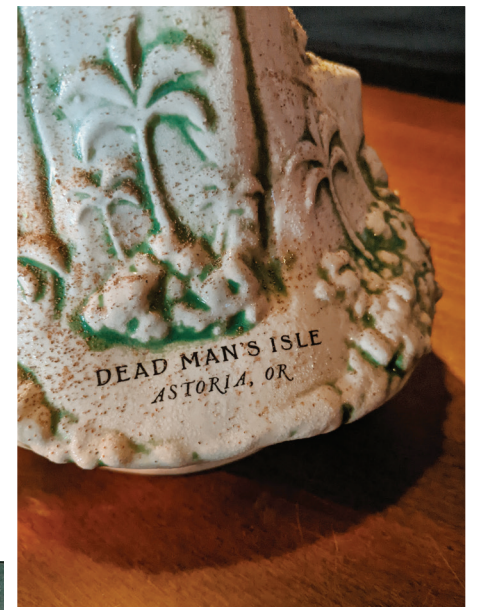
A new treasure awaits fans of the Tiki aesthetic. Step through the door of Dead Man's Isle in Astoria and find yourself in an oasis, helmed by proprietors Annie Van Dyke and Miles Nielsen.

"You become part of the story," Nielsen said, pointing to a portrait of a sailor on the wall. "This captain got shipwrecked and he used his ship to build this place."

Nielsen and Van Dyke are setting a scene. Dead Man's Isle, named for Dead Man's Cove within Cape Disappointment State Park, draws on both maritime and Tiki aesthetics, merging Polynesian and American iconography.

Centering a dark interior beneath glass floats hanging from the ceiling is a bar, assembled from shadow boxes and old crates. "We love entertaining and creating this type of ambiance," Van Dyke said.

More than just a neighborhood Tiki joint, Dead Man's Isle infuses a nautical flair, with nods to "Gilligan's Island," "Swiss Family Robinson," and, inevitably, "The Goonies." "Our logo is a nod to One-Eyed Willy,"



See Page 7



Photos by Peter Korchnak

ABOVE: David Licitra, left, and Kristen Zisk stand behind the bar at Dead Man's Isle in Astoria. RIGHT: Annie Van Dyke, left, and Miles Nielsen, owners of Dead Man's Isle in Astoria, exhibit the volcano cocktail, a signature drink. ABOVE RIGHT: A candle features the logo of Dead Man's Isle.