

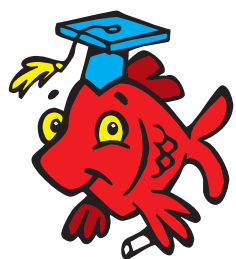
Kid Scoop®

THE AWARD-WINNING PRINT & ONLINE FAMILY FEATURE



© 2022 by Vicki Whiting, Editor Jeff Schinkel, Graphics Vol. 38, No. 37

UNDERWATER SCHOOLS



Join fish expert Professor Pescados as *Kid Scoop* explores schools of fish.

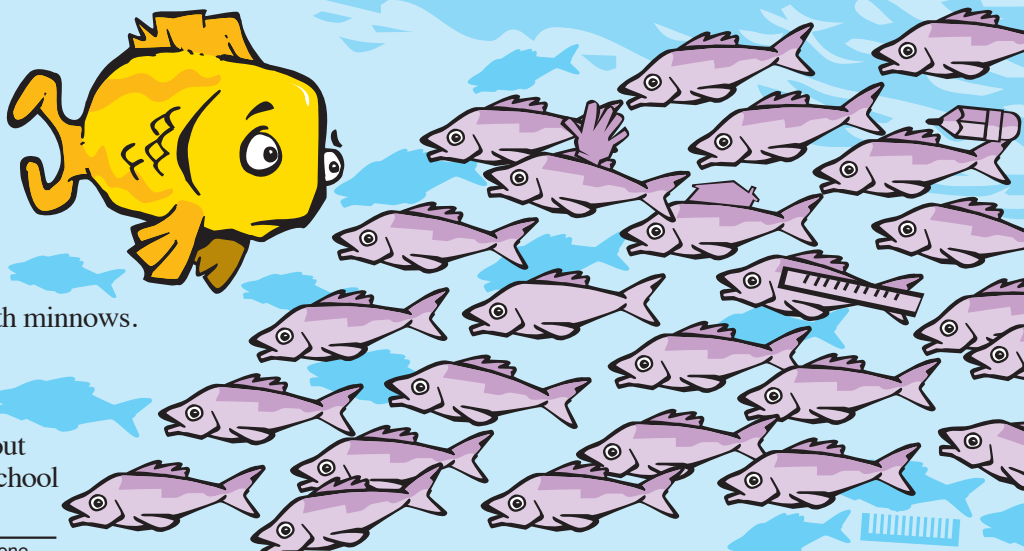
School Days

Underwater schools are different from the school you go to. A school in the ocean is actually a group of fish that swim together. About 4,000 kinds of fish swim in groups called schools.

Schools of fish are always made up of one kind of fish swimming together. Sardines swim with sardines, and minnows swim with minnows.

In a school, the fish are able to swim together, moving in the same direction or even changing directions in an instant without bumping into each other. This can make a school of thousands of fish look like one big fish.

Standards Link: Life Science: Living organisms depend on one another for survival.



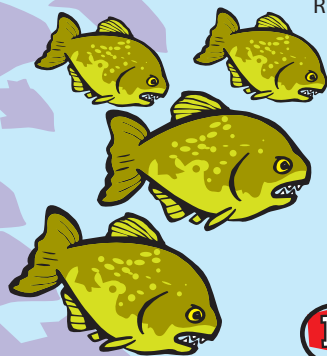
Can you find these pictures in the school of fish?



Why School?

Some fish travel in schools to confuse enemies that want to eat them. Traveling together also helps in the search for food. Having thousands of eyes and noses on the lookout for food gives the school a better chance of finding dinner.

Standards Link: Life Science: Adaptations in behavior improve an organism's chance for survival.



Do all fish school?

Not all fish school. For the most part, predator fish do not school. One exception is this fish. These fish are born into and live in large schools.

Circle every other letter to find the name of this fish.

P T I M R K A Y N M H O A B

All Groups Are NOT Schools

Some groups of underwater animals are not called schools. Use the code to find out what each group of animals below is called.

SECRET CODE A D E H I L M O P R S V Y

Standards Link: Life Science: Students know examples of diverse life forms in the ocean.

Common Nouns and Proper Nouns

Look through the newspaper and find five common nouns and five proper nouns. Cut them out and glue them to Professor Pescados' chart in the correct column.

Common Nouns	Proper Nouns

Standards Link: Grammar: Identify nouns.

Kid Scoop Puzler

Traffic Control

How do fish swim so close without colliding? Fish use a combination of their senses to create smooth schooling movements.

Eyes: Each fish can look forward with one eye while the other is looking backward.



Lateral Line: Along each side of a fish's body there is a line of tiny holes or pores. Tiny hairs inside the pores feel the slightest ripple or movement in the water. This lets fish know when another fish is nearby. If one fish moves in a different direction, all the others sense it and move accordingly.

Standards Link: Life Science: Animals have structures that serve different functions in survival.

Double Double Word Search

- UNDERWATER
- SCHOOLS
- MINNOWS
- RIPPLE
- SWIM
- LATERAL
- SARDINES
- PREDATOR
- HAIRS
- CLOSE
- NAME
- BACKWARD
- PORES
- CHART
- WHY

Find the words in the puzzle. How many of them can you find on this page?

R E T A W R E D N U
D S R I A H E S L R
R E M A N L S S A O
A N C H P E L W T T
W I O P R O Y O E A
K D I O O S H N R D
C R P H O L W N A E
A A C L O S E I L R
B S T R A H C M M P

Standards Link: Letter sequencing. Recognize identical words. Skim and scan reading. Recall spelling patterns.

Thank you for supporting **NEWSPAPERS IN EDUCATION**

- Bergerson Construction
- Bridgewater Bistro
- Chinook Marine Repair Shop
- Randall Lees Flooring America
- Red Dwarf Graphx
- Seaside Visitors Bureau
- Subway

Velazquez Painting & Construction
1159 South Wahanna Rd. #A Seaside
503-739-3055

Astoria Vintage Hardware
1162 Marine Drive Astoria
503-325-1313

North Coast HOME CARE
Home Oxygen • Medical Equipment
2230 EXCHANGE ST. | ASTORIA | 503-325-9906

River & Sea
757 W. Marine Dr. Astoria, OR
503-338-5200

NORTHWEST READY MIX
950 Olney Ave • Astoria
503-325-3562

Ship Out Seafood Restaurant
92351 Lewis and Clark Rd., Astoria • 503-468-0373

THE HOME DEPOT
1650 SE Ensign Lane WARRENTON
503-861-9999

ASTORIA GRANITE WORKS
QUALITY STONE WORK SINCE 1917
423 GATEWAY AVE. • ASTORIA | 503-325-0761

34912 Business Hwy 101, Astoria
503-325-0792

Jonathon's, LTD
• Estate Jewelry • Diamonds
• Art • Antiques
332 12th St., Astoria
503-325-7600

COFFEE GIRL
100 39th St., Suite 2 Astoria
503-325-6900

EMERALD HEIGHTS
1 Emerald Drive, Astoria
503-325-8221

Home Furnishings
1033 Commercial Street Astoria, Oregon 97103
(503) 325-5620

Premium ADJUSTABLE BEDS
ASTORIA • 503-325-1974

TERRY'S PLUMBING
Commercial & Residential 503-325-5180

SUZANNE ELISE
Assisted Living Community
101 Forest Drive Seaside
503-738-0307

TLC
A DIVISION OF Fibre Federal CREDIT UNION
85 W Marine Dr Astoria
2315 N Roosevelt Dr Seaside
1771 SE Ensign Ln Warrenton
www.tlfcu.org • 503.842.7523

QUACKENBUSH BUILDERS, INC.
Quality Construction from Design to Finish
503-440-2827

JJ ELECTRIC SERVICE
Quality Work at Affordable Rates
503-739-7145
712 S. Holladay Seaside, Oregon
www.jjelectricservice.com

Morgan Civil Engineering
PO Box 358 • Manzanita
503-368-6186

COLUMBIA RIVER MARITIME MUSEUM
1792 MARINE DR • ASTORIA

COLUMBIA VETERINARY HOSPITAL
576 31ST STREET ASTORIA
503-325-2250

Great Ocean DA YANG
Da Yang Seafoods LTD.

COLUMBIA RIVER BAR PILOTS
PROVIDING SAFE PASSAGE SINCE 1846

Lower Columbia Hospice
A COLUMBIA MEMORIAL HOSPITAL AFFILIATE
2158 Exchange St. | Suite 206 Astoria | 503-338-6230

S&F Land Services
Land Surveying & Remote Sensing
1725 N. Roosevelt Drive Suite B | Seaside
503-738-3425

Northwest West Inc. Income Tax Preparation
762 Avenue G • Seaside, OR 97138
503-738-3480

Tires LES SCHWAB
McCALL TIRE CENTER
WARRENTON 861-3252
1167 SE Marlin SEASIDE 738-8243
2155 S. Roosevelt

HAMPTON LUMBER MILLS

Classic BODYWORKS
AND TOWING
503.325.0411
34747 Hwy 101 Bus. ASTORIA

LEWIS & CLARK TIMBERLANDS
MANAGED BY GREENWOOD RESOURCES

Astoria's Best
TECHNOLOGY SOLUTIONS for home users and small business
AstoriasBest.com 77 11th Street, Suite H Astoria | 503-325-2300

Kevin Bros LAND & TIMBER
ASTORIA | 503-556-0410

Clatsop County FAIR & EXPO
92937 Walluski Loop | Astoria
503-325-4600

Bayshore Animal Hospital
325 Marlin Avenue WARRENTON
503-861-1621

CLATSOP BEHAVIORAL HEALTHCARE
65 N. Hwy 101 Suite 204 Warrenton
503-325-5722