

Kid Scoop®

THE AWARD-WINNING PRINT & ONLINE FAMILY FEATURE



© 2022 by Vicki Whiting, Editor Jeff Schinkel, Graphics Vol. 38, No. 33

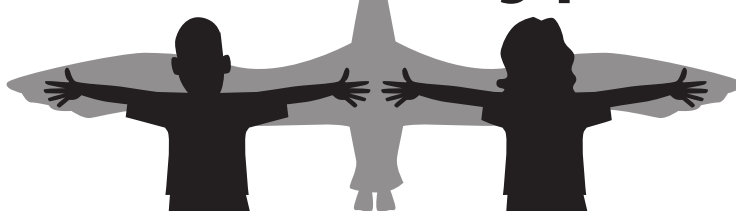
Albatross

The albatross is one of the world's largest flying seabirds.

The most common North Pacific species is the Laysan albatross. There are more than 660,000 breeding pairs just on Midway Atoll in the northwest Hawaiian Islands.



Wide, Wide Wingspan



The wandering albatross is the largest member of the albatross family. This bird is one of the largest birds in the world. They have the largest wingspan, ranging from 8.23 to 11.8 feet.

ACTIVITY: Stretch your arms out wide. Have a family member measure your "wingspan" from fingertip to fingertip.

How an Albatross Chick Eats

Number the steps below in order.

- The chick then pulls food out of the parent's mouth to eat.
- To feed its chick, the adult forces food up out of its stomach and into its mouth. This is called regurgitation.
- The adult flies back to its chick with the food in its stomach.
- An adult albatross scoops up food for its chick from the sea.

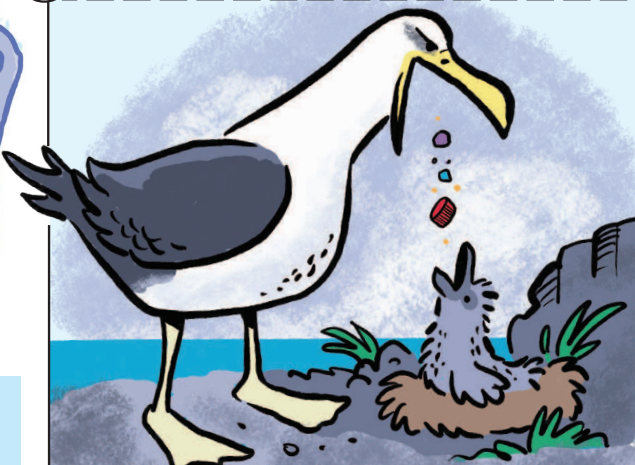
Skip the Straw!
Plastic straws create huge problems for the environment. Use a paper straw or, better yet, just skip the straw!

Plastic Problem

Replace the missing words!
Even though this large group of albatross lives far away from people, their young get _____ and die because of _____ people. Small plastic toys, bottle caps, toothbrushes, and other small pieces of plastic have been found in the _____ of the chicks.

How did plastic end up in the stomachs of _____ that live so far away from populated areas?

Albatross parents _____ hundreds of miles to find food for their chicks. They scoop up squid, krill, fish eggs and other seafood from the _____ of the ocean. But these days, they also accidentally swallow floating plastic.



One bird researcher on Midway saw an adult regurgitate a toothbrush and its chick ate it. Chicks are not able to regurgitate food or other materials out of their stomachs and the plastic food stays there, making them sick and sometimes killing them.

You Can Help the Albatross!

You can keep trash from traveling to the sea by recycling, putting trash in trash cans, and choosing reusable alternatives over single-use plastic. Less plastic on land means less plastic in the sea!



Extra! Extra!

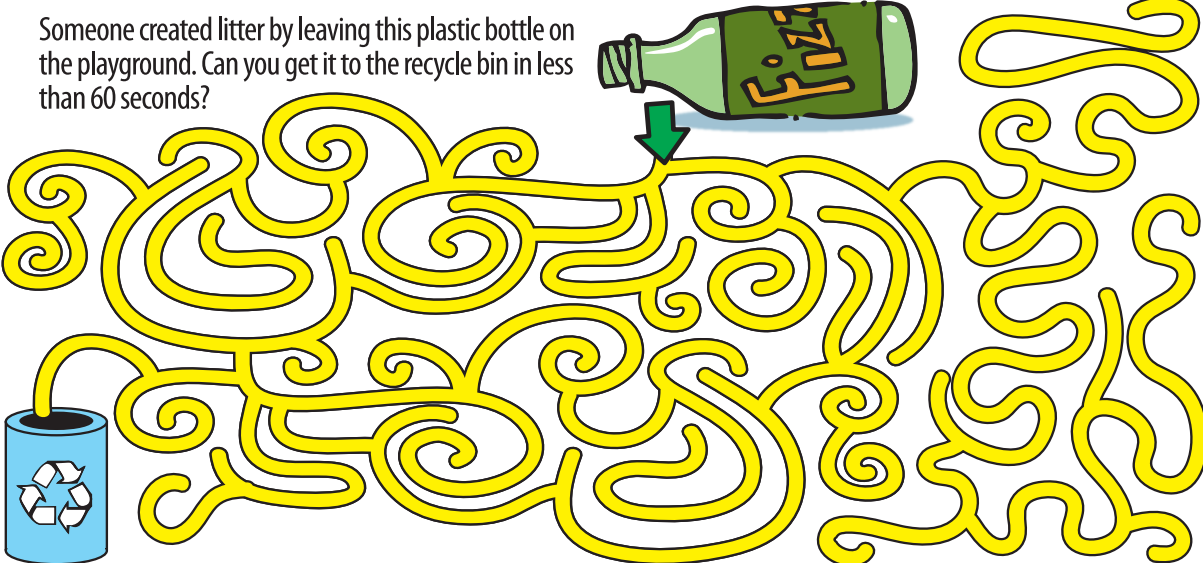
Instead of Plastic

Look through the newspaper and find five things made of plastic. What could people use instead of plastic for each of these five things?

Example: Plastic bag—use a cloth bag instead.

Standards Link: Life Science: Understand renewable and nonrenewable resources.

Someone created litter by leaving this plastic bottle on the playground. Can you get it to the recycle bin in less than 60 seconds?



Kid Scoop® Puzzler

How many pounds of plastic waste do scientists estimate albatross bring to Midway Atoll each year?

Color each odd number red to reveal the answer.

2	8	4	8	4	6	8	8	4	6	2	2	4	6	8	4	2	6	2
6	9	6	9	1	9	2	7	9	5	8	9	3	9	2	1	9	5	6
4	3	2	9	6	5	6	9	2	9	6	1	6	7	6	9	2	9	4
8	9	6	5	8	3	4	5	6	1	2	9	8	9	4	7	6	7	8
2	5	8	9	4	9	8	9	2	9	4	7	4	5	8	9	2	9	2
4	9	4	9	2	1	6	3	8	7	6	5	2	9	6	3	8	5	4
2	1	8	7	4	9	2	7	4	9	8	9	4	1	2	9	4	9	2
4	1	2	9	2	5	8	9	6	9	2	3	2	9	8	1	6	3	4
2	9	4	3	6	9	6	1	2	9	6	9	6	7	6	9	2	9	2
8	9	6	9	9	1	2	9	3	9	8	1	9	5	2	5	9	1	8
6	2	4	2	8	6	4	2	8	6	4	6	8	2	6	4	2	8	6

Double Double Word Search

- ALBATROSS
- PACIFIC
- WINGSPAN
- PLASTIC
- ISLANDS
- CAPS
- MIDWAY
- TOYS
- LITTER
- ATOLL
- SQUID
- OCEAN
- SICK
- BIRD
- EAT

Find the words in the puzzle. How many of them can you find on this page?

N	A	E	C	O	S	O	P	V	I
A	W	V	A	I	Y	Y	A	W	S
P	N	C	P	T	O	A	C	R	L
S	D	Y	S	Q	T	W	I	E	A
G	F	R	L	D	L	D	F	T	N
N	E	B	I	K	L	I	I	T	D
I	J	U	C	B	O	M	C	I	S
W	Q	I	C	I	T	S	A	L	P
S	S	O	R	T	A	B	L	A	M

Standards Link: Letter sequencing. Recognize identical words. Skim and scan reading. Recall spelling patterns.

COLUMBIA RIVER MARITIME MUSEUM
1792 MARINE DR • ASTORIA

COLUMBIA VETERINARY HOSPITAL
576 31ST STREET ASTORIA
503-325-2250

Great Ocean DA YANG
Da Yang Seafoods LTD.

COLUMBIA RIVER BAR PILOTS
PROVIDING SAFE PASSAGE SINCE 1846

Lower Columbia Hospice
2158 Exchange St. | Suite 206 Astoria | 503-338-6230

S&F Land Services
1725 N. Roosevelt Drive Suite B | Seaside
503-738-3425

Northwest West Inc. Income Tax Preparation
762 Avenue G • Seaside, OR 97138
503-738-3480

Tires LES SCHWAB McCALL TIRE CENTER
WARRENTON 861-3252 1167 SE Marlin SEASIDE 738-8243 2155 S. Roosevelt

HAMPTON LUMBER MILLS

Classic BODYWORKS
503.325.0411 AND TOWING 34747 Hwy 101 Bus. ASTORIA

LEWIS & CLARK TIMBERLANDS
MANAGED BY GREENWOOD RESOURCES

Astoria's Best SOLUTIONS
77 11th Street, Suite H Astoria | 503-325-2300

Kevin Bros LAND & TIMBER
ASTORIA | 503-556-0410

Clatsop County FAIR & EXPO
92937 Walluski Loop | Astoria
503-325-4600

Bayshore Animal Hospital
325 Marlin Avenue WARRENTON
503-861-1621

CLATSOP BEHAVIORAL HEALTHCARE
65 N. Hwy 101 Suite 204 Warrenton
503-325-5722

RE/MAX River & Sea

ASTORIA GRANITE WORKS
423 GATEWAY AVE. • ASTORIA | 503-325-0761

Home Furnishings
1033 Commercial Street Astoria, Oregon 97103
(503) 325-5620

Premium ADJUSTABLE BEDS
ASTORIA • 503-325-1974

TERRY'S PLUMBING
Commercial & Residential 503-325-5180

JJ ELECTRIC SERVICE
Quality Work at Affordable Rates 503-739-7145 712 S. Holladay Seaside, Oregon www.jjelectricservice.com

Morgan Civil Engineering
PO Box 358 • Manzanita
503-368-6186

Velazquez Painting & Construction
1159 South Wahanna Rd. #A Seaside
503-739-3055

Astoria Vintage Hardware
1162 Marine Drive Astoria
503-325-1313

North Coast HOME CARE
Home Oxygen • Medical Equipment
2230 EXCHANGE ST. | ASTORIA | 503-325-9906

NORTHWEST READY MIX
950 Olney Ave • Astoria
503-325-3562

Ship Out Seafood Restaurant
92351 Lewis and Clark Rd., Astoria • 503-468-0373

THE HOME DEPOT
1650 SE Ensign Lane WARRENTON
503-861-9999

LAWN & TRACTOR
34912 Business Hwy 101, Astoria
503-325-0792

Jonathon's, LTD
• Estate Jewelry • Diamonds • Art • Antiques
332 12th St., Astoria
503-325-7600

COFFEE GIRL
100 39th St., Suite 2 Astoria
503-325-6900

EMERALD HEIGHTS
1 Emerald Drive, Astoria
503-325-8221

SUZANNE ELISE
Assisted Living Community
101 Forest Drive Seaside
503-738-0307

TLC Fibre Federal CREDIT UNION
85 W Marine Dr Astoria
2315 N Roosevelt Dr Seaside
1771 SE Ensign Ln Warrenton
www.tlfcu.org • 503.842.7523

QUACKENBUSH BUILDERS, INC.
Quality Construction from Design to Finish
503-440-2827

Thank you for supporting **NEWSPAPERS IN EDUCATION**

- Bergerson Construction
- Bridgewater Bistro
- Chinook Marine Repair Shop
- Randall Lees Flooring America
- Red Dwarf Graphx
- Seaside Visitors Bureau
- Subway