

Kid Scoop®

THE AWARD-WINNING PRINT & ONLINE FAMILY FEATURE



© 2022 by Vicki Whiting, Editor Jeff Schinkel, Graphics Vol. 38, No. 29

TALES OF SUNKEN TREASURE!

A Sunken City

In the 1600s, Port Royal, Jamaica, was one of the busiest seaports in the Caribbean. It was home to merchants, missionaries, smugglers and pirates.

In 1692, an earthquake hit the city. Much of it sank 65 feet (20 meters) below sea level. For hundreds of years, sand and mud covered the city. Many treasure seekers tried to find the sunken city and failed.

Then in 1965, a diver named Robert Marx used modern equipment to dig under the layers of mud and found the lost city. He was not looking for treasure, but find it he did!

Thousands of coins were found—perhaps lost pirate treasure.

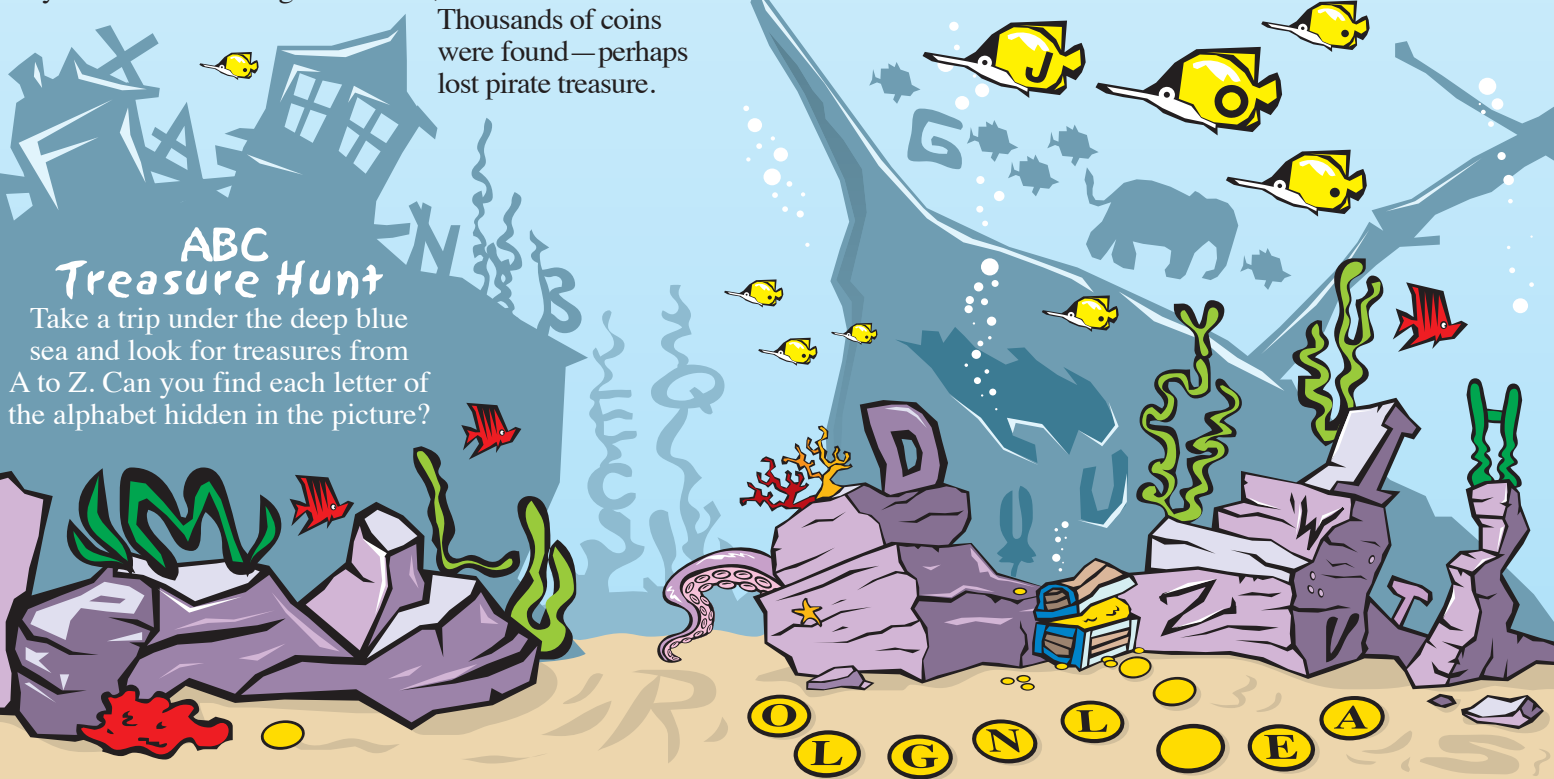
Sunken Ships

Long ago, Spanish ships full of treasure sailed the seas. Sometimes these ships sank, leaving tons of treasure on the sea floor. Search the sea floor for seven coins with letters on them. Unscramble the letters to find out what these ships were called!

A Spanish treasure ship was called a _____

Standards Link: Spelling: Spell independently combining phonemes to form words; vocabulary development.

Answer: Galleon

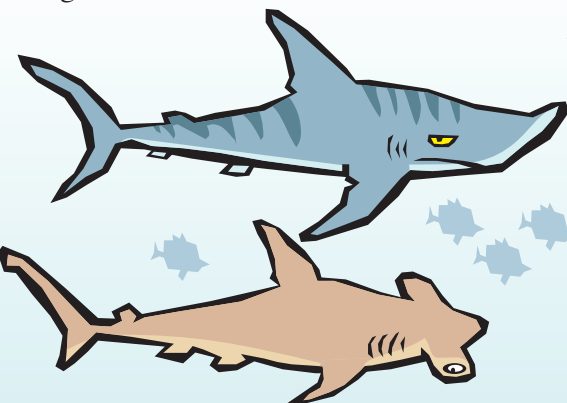


ABC Treasure Hunt

Take a trip under the deep blue sea and look for treasures from A to Z. Can you find each letter of the alphabet hidden in the picture?

Shark Alert

Diving for the lost city of Port Royal is dangerous. Divers must watch out for sharks.



Do all sharks look the same? No siree! Circle five ways the two sharks are different.

Standards Link: Visual Discrimination.

Uncover the Unlikely

Well, shiver me timbers! There are two land animals hiding in the picture above. Can you find them all?

Standards Link: Visual Discrimination.

Treasure Hunter Clues

Divers looking for sunken treasure do not look for the hulls of sunken ships. Wooden hulls rot after hundreds of years under water.

Treasure hunters look instead for lumps that could be the remains of metal parts of a ship: cannons, anchors, tools and ballast. Sometimes, even these are hard to see, as most of them have been encrusted with sand and shells.



Extra! Extra! Newspaper Treasure Hunt

Dig through the newspaper to find:

- a word that starts with **tr**
- something you consider a treasure
- four 2-syllable words
- a 6-digit number

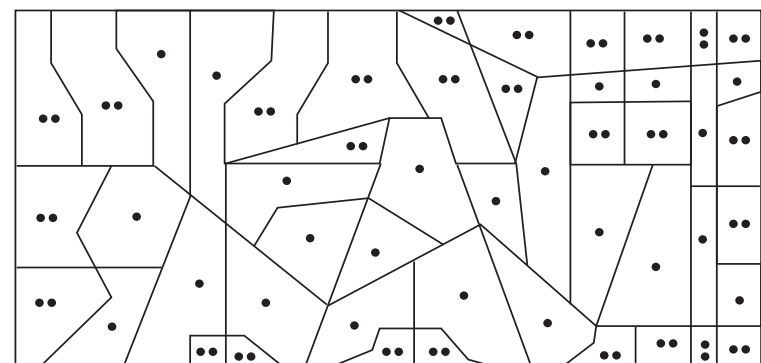
Standards Link: Decoding: Recognize blends and multi-syllable words.

Kid Scoop® Puzzler

Sunken SOMETHING

Some say that in 1876, *something* carrying millions of dollars of gold crashed and fell into the Ashtabula River in Ohio. Many have tried to find the mystery bullion, but to date no one has. Do you think it is really there? Or is it a legend?

To find out what crashed, color each space with one dot BLACK and color each space with two dots BLUE.



Standards Link: Reading Comprehension.

Double Double Word Search

Find the words in the puzzle. How many of them can you find on this page?

MYSTERY	T	A	L	D	N	A	S	E	T	S
SUNKEN	O	E	L	Y	R	E	T	S	Y	M
TREASURE	F	O	R	S	U	R	O	U	T	K
JAMAICA	G	N	S	U	E	L	D	N	I	R
SMUGGLERS	K	E	H	V	S	U	N	K	C	A
SHIP	A	C	I	A	M	A	J	E	T	H
DIVER	R	D	P	O	R	T	E	N	E	S
GOLD	S	M	U	G	G	L	E	R	S	A
LOST	S	L	A	Y	O	R	U	R	T	E
CITY										
SAND										
ROYAL										
SHARK										
MUD										
PORT										

Standards Link: Letter sequencing. Recognize identical words. Skim and scan reading. Recall spelling patterns.

COLUMBIA RIVER MARITIME MUSEUM
1792 MARINE DR • ASTORIA

COLUMBIA VETERINARY HOSPITAL
576 31ST STREET ASTORIA
503-325-2250

Great Ocean DA YANG
Da Yang Seafoods LTD.

COLUMBIA RIVER BAR PILOTS
PROVIDING SAFE PASSAGE SINCE 1846

Lower Columbia Hospice
2158 Exchange St. | Suite 206 Astoria | 503-338-6230

S&F Land Services
1725 N. Roosevelt Drive Suite B | Seaside
503-738-3425

Northwest West Inc. Income Tax Preparation
762 Avenue G • Seaside, OR 97138
503-738-3480

Tires LES SCHWAB
McCALL TIRE CENTER
WARRENTON 861-3252
1167 SE Marlin SEASIDE 738-8243
2155 S. Roosevelt

HAMPTON LUMBER MILLS

Classic BODYWORKS
503.325.0411
34747 Hwy 101 Bus. ASTORIA

LEWIS & CLARK TIMBERLANDS™
MANAGED BY GREENWOOD RESOURCES®

Astoria's Best
77 11th Street, Suite H Astoria | 503-225-2300

Kevin Bros LAND & TIMBER
ASTORIA | 503-556-0410

Clatsop County FAIR & EXPO
92937 Walluski Loop | Astoria
503-325-4600

Bayshore Animal Hospital
325 Marlin Avenue WARRENTON
503-861-1621

CLATSOP BEHAVIORAL HEALTHCARE
65 N. Hwy 101 Suite 204 Warrenton
503-325-5722

Thank you for supporting **NEWSPAPERS IN EDUCATION**

- Bergerson Construction
- Bridgewater Bistro
- Chinook Marine Repair Shop
- Randall Lees Flooring America
- Red Dwarf Graphx
- Seaside Visitors Bureau
- Subway

Velazquez Painting & Construction
1159 South Wahanna Rd. #A Seaside
503-739-3055

Astoria Vintage Hardware
1162 Marine Drive Astoria
503-325-1313

North Coast HOME CARE
Home Oxygen • Medical Equipment
2230 EXCHANGE ST. | ASTORIA | 503-325-9906

RE/MAX River & Sea

NORTHWEST READY MIX
950 Olney Ave • Astoria
503-325-3562

Ship Out Seafood Restaurant
92351 Lewis and Clark Rd., Astoria • 503-468-0373

THE HOME DEPOT
1650 SE Ensign Lane WARRENTON
503-861-9999

ASTORIA GRANITE WORKS
QUALITY STONE WORK SINCE 1917
423 GATEWAY AVE. • ASTORIA | 503-325-0761

LAWN & TRACTOR
34912 Business Hwy 101, Astoria
503-325-0792

Thankyou Teri Carpenter

Home Furnishings
1033 Commercial Street Astoria, Oregon 97103
(503) 325-5620

Jonathon's, LTD
• Estate Jewelry • Diamonds
• Art • Antiques
332 12th St., Astoria
503-325-7600

COFFEE GIRL
100 39th St., Suite 2 Astoria
503-325-6900

EMERALD HEIGHTS
1 Emerald Drive, Astoria
503-325-8221

Premium ADJUSTABLE BEDS
ASTORIA • 503-325-1974

SUZANNE ELISE
Assisted Living Community
101 Forest Drive Seaside
503-738-0307

TLC
A DIVISION OF Fibre Federal CREDIT UNION
85 W Marine Dr Astoria
2315 N Roosevelt Dr Seaside
1771 SE Ensign Ln Warrenton
www.tlfcu.org • 503.842.7523

QUACKENBUSH BUILDERS, INC.
Quality Construction from Design to Finish
503-440-2827

TERRY'S PLUMBING
Commercial & Residential 503-325-5180

JJ ELECTRIC SERVICE
Quality Work at Affordable Rates
503-739-7145
712 S. Holladay Seaside, Oregon
www.jjelectricservice.com

Morgan Civil Engineering
PO Box 358 • Manzanita
503-368-6186