

RELIGION BRIEFS

Anchor Baptist Church

The congregation meets at the Astoria Christian Church, 1151 Harrison Ave. On Sundays, the service starts at 1 p.m.; Bible study is at 7 p.m. Thursdays. For information, email anchorbaptistastoria@gmail.com

Astoria Christian Church

For service information and updates, go to astoriachristian.org or bit.ly/AstoriaChristian, call 503-325-2591 or email Astoria-Christian@gmail.com

Astoria First Baptist Church

First Baptist Church, 349 Seventh St., holds a worship service at 10:45 a.m. Sunday. The service is also broadcast at fb.me/astoriafirstbaptist

Sunday school starts at 9:30 a.m. There is no child care, but children are encouraged to join the service. For information, call the church office at 503-325-1761.

Astoria First United Methodist Church

Open for worship on Sundays at 11:30 a.m., 1076 Franklin Ave. Masks are required. For livestream service information, email the church office at office@unitedmethodistastoria.org or call 503-325-5454.

Bethany Free Lutheran Church

On Sundays at Bethany Free Lutheran Church, 451 34th St., Sunday school is at 9:30 a.m., and the service is at 11 a.m. "Glad Tidings" is at 8:40 a.m. on KAST 1370 AM.

On Mondays, confirmation is at 6 p.m.; Brown Bags is at 1:30 p.m. Tuesdays; and the Bethany Sewing Mission is at 10 a.m. Thursdays. The Women's Missionary Federation meets at 11 a.m. on the second Thursday of the month. For information, go to bethany-free.com or call 503-325-2925.

Common Ground Interspiritual Fellowship

Common Ground Interspiritual Fellowship holds a service from 9:30 to 10:30 a.m. Sunday, via Zoom, which is open to all belief systems, including the spiritual but not religious. For information, go to cgifellowship.org. For the Zoom link, email info@cgifellowship.org

For the Zoom link, email info@cgifellowship.org

First Church of Christ, Scientist

Sunday morning services and Sunday school at the Christian Science Church, 632 11th St., are held at 10 a.m.; enter on 11th Street.

Wednesday evening testimony meetings are at 7 p.m. Those wishing to attend by phone can get details by calling 971-320-0294.

The Reading Room hours are 11:30 a.m. to 1:30 p.m. Tuesday through Thursday, except holidays; enter on Franklin Avenue.

Grace Episcopal Church

Grace Episcopal Church, 1545 Franklin Ave., holds Sunday services at 8 and 10 a.m. The later service is also livestreamed on Facebook and YouTube.

Morning prayer services are daily at 8 a.m., and an evening prayer service is at 7 p.m. Wednesdays, also livestreamed. Masks are required, and air machines are in use.

The weekly music series "Fridays in Lent" begins Friday from noon to 1 p.m., with contemplative listening and walking the Stations of the Cross. The musician is Ray Utterback, playing the organ and piano.

The food pantry is open from 9 to 11:30 a.m. Tuesday and Thursday.

Church office hours are from 10 a.m. to noon Monday through Friday. For information, go to graceastoria.org, call 503-325-5107 or email graceastoria4691@gmail.com

Olney Community Church

The non-denominational Olney Community Church, 89351 Oregon Highway 202, meets at 9:30 a.m. Sunday for breakfast. Sunday school is at 10 a.m., and the worship service is at 11 a.m. All are welcome.

A Wednesday prayer meeting is at 2 p.m. For information, call the church at 503-325-3394, or Ed Hortsch, pastor, at 503-791-4475.

Pacific Unitarian Universalist

The Pacific Unitarian Univer-

salist Fellowship now meets in person at noon Sunday at the First Presbyterian Church, 1103 Grand Ave. The sanctuary entrance is on 11th Street between Grand and Harrison avenues. The service is also held via Zoom; for information, go to pacuuf.org

Peace First Lutheran

Peace First Lutheran Church holds Sunday services at 8:30 and 11 a.m. at 725 33rd St. The 8:30 a.m. service is also streamed live at bit.ly/3rckrMd

Wednesday Bible study is at 10:30 a.m. and 6 p.m., with noon-time prayers following the first session, at 565 12th St. For Bible study Zoom links, email the church office.

Church office hours are Monday through Friday 8:30 a.m. to 5 p.m. For information, call 503-325-6252, email office@peace-firstlutheran.com or go to peace-firstlutheran.com

Pioneer Presbyterian Church

WARRENTON — For service information, call the church at 503-861-2421 or go to pioneer-churchpcusa.org

St. Brendon the Navigator Orthodox Church

St. Brendan the Navigator Orthodox Church, 820 Alameda Ave., holds Catechism at 3:30 p.m. Saturday; Great Vespers is at 5 p.m. A light potluck follows.

On Sunday, Matins are at 8:30 a.m. Divine Liturgy is at 10 a.m., followed by a potluck meal.

Masks must be worn at all times unless there is a medical reason. For questions, contact Rev. Sergey Kakorin at 360-904-7794 or skergeykakorin@gmail.com or go to orthodoxastoria.org

St. Mary, Star of the Sea Parish

For information about the St. Vincent de Paul Food Pantry hours, and service and livestreaming information at both the Astoria church and Hammond mission, call 503-325-3671, email office@stmaryastoria.com or go to stmaryastoria.com or bit.ly/stmaryastoria

Scandinavian festival announces 2022 court

The Astorian

The 55th annual Astoria Scandinavian Midsummer Festival celebration returns to the Clatsop County Fairgrounds on June 17, 18 and 19.

The 2022 Midsummer Court will be formally introduced at Astoria High School at 7 p.m. on Tuesday, when they will give their first presentations. Admission is free, and the event is open to the public. Masks are required.

The members of the Astoria Scandinavian Midsummer Court are:

Miss Scandinavia 2021 is Kaisa Liljenwall, a sophomore in biomedical engineering at the University of Southern California. She represents the Vasa (Swedish) Order of America Astor Lodge No. 215, and served as Junior Miss Sweden in 2010 and as Senior Miss Sweden in 2020 and 2021.

Senior Miss Denmark is Ava Osborne, a junior at Astoria High School. She is sponsored by the Lower Columbia Danish Society, and was Junior Miss Denmark in 2012.

Senior Miss Finland is Olivia Esnard, a junior at Seaside High School. She is sponsored by the United Finnish Kaleva Brotherhood & Sisterhood Astoria Lodge No. 2, and was Junior Miss Finland in 2013.

Senior Miss Norway is Ralee Telen, a junior at Astoria High School. She is sponsored by the Sons of Norway Nidaros Lodge No. 16, and was Junior Miss Norway in 2014.

Senior Miss Sweden is Kaylee Falleur, a junior at Astoria High School. She is sponsored by the Vasa (Swedish) Order of America Astor Lodge No. 215 and was Junior Miss Denmark in 2014.

Junior Miss Denmark is Annelisa Vestboe, of Hillsboro. She is sponsored by the Lower Columbia Danish Society.

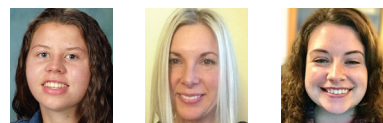
Junior Miss Finland is Ila Canessa, a student at Lewis and Clark Elementary School. She is sponsored by the United Finnish Kaleva Brotherhood & Sisterhood Astoria Lodge No. 2.

Junior Miss Norway is Ellen Rohne, who attends Hilda Lahti Elementary School. She is sponsored by the Sons of Norway Nidaros Lodge No. 16.

Junior Miss Sweden is Ella Mattingly, who attends Astor Elementary



LEFT: Junior Miss Norway, Ellen Rohne
MIDDLE: Junior Miss Finland, Ila Canessa
RIGHT: Junior Miss Denmark, Annelisa Vestboe



LEFT: Senior Miss Sweden, Kaylee Falleur
MIDDLE: Junior Court chaperone, Jennifer Canessa
RIGHT: Senior Court chaperone, Abbie Johnson



LEFT: Crownbearer, Corbin Darrington
MIDDLE: Junior Miss Sweden, Ella Mattingly
RIGHT: Junior Miss Norway, Ralee Telen



LEFT: Senior Miss Finland, Olivia Esnard
MIDDLE: Senior Miss Denmark, Ava Osborne
RIGHT: Miss Scandinavia 2021, Kaisa Liljenwall

School. She is sponsored by the Vasa (Swedish) Order of America Astor Lodge No. 215.

The crownbearer is Corbin Darrington, who attends Lewis & Clark Elementary School.

Senior Court chaperone is Abbie Johnson, a nurse at Columbia Memorial Hospital and Providence Seaside Hospital. She was Junior Miss Norway in 2003 and Senior Miss Norway and Miss Scandinavia in 2014.

Junior Court chaperone is Jennifer Canessa, a graduate of Naselle High School who is self-employed as a property manager.

Leading up to the three-day festival in June, these ambassadors will speak to local organizations in preparation for their final speech, "What My Heritage Means to Me" on June 17. Those wishing to invite the court to make an appearance or speak at an event or organization should email ASMFAP-rincessCommittee@gmail.com

For the latest information about the festival, go to astoriascanfest.org

City Lumber

Founded 1904
Your Project Headquarters

"We're more than a lumber yard"

Voted **BEST** Home Improvement Store in 2020

READERS' CHOICE AWARDS

Don't have room to store a ton of pellets?

40-LB. BAG
\$5.39
\$249.50/ton
Picked up



We'll store your pellets for you.

You pick them up when you need them!



\$9.99

Wild Bird Seed

A mix of red and white milo, cracked corn, white millet, and black oil sunflower seeds attract cardinals, finches, mourning doves, nuthatches, chickadees, woodpeckers, junco, and grosbeak. Carry handle. SKU #740666



88¢ /pkg.

High Energy Suet

C&S Treat Suet contains rendered beef, millet, and more. Year round feeding for a variety of birds. Designed for use with suet cake feeders. SKU #706784

\$59.99

Best Comfort Oil-Filled Radiator Heater

7-fin oil-filled radiator heater. Adjustable thermostat maintains desired temperature. 3 heat settings for energy efficient options. External cord storage. Safety features include: Solid heavy gauge steel, durable rust-free enamel finish, machine welded for leak-free operation, power indicator light, accidental overheat shut-off, front and rear carrying handles. SKU #435470



\$8.97

1 cu. ft. bag
Miracle-Gro Potting Soil

All-purpose, specially formulated potting soil mix for indoor and outdoor container plants. Provides the ingredients for container plants to grow bigger and produce more blooms with more color. Miracle-Gro's effective, slow-release plant food feeds plants for up to 6 months, promoting long-term success and yields. SKU POTTING



Best Comfort Milkhouse Heater

\$29.99

Sturdy, large utility heater with integrated fan system and shroud for a powerful, concentrated heat output. Comfort control thermostat automatically maintains desired temperature level. Carry grip on top handle for portability. Front protective bars. All-metal housing and tough construction. Total safety system, including protective front guards and tip-over protection. 100 Sq. Ft. (square foot) heating area. Convenient front controls. 2 heat settings: 1300W (watt) or 1500W. SKU #428256

CITY LUMBER COMPANY

Do it Best



FOLLOW US ON **twitter**

Open Monday - Friday 7:30 am to 5:30 pm; Saturday 8 am to 5 pm; Sunday 9 am to 4 pm

2142 Commercial, Astoria
325-4511 • 1-800-248-4511

www.citylumber.com

FOLLOW US ON **facebook**

