

## RELIGION BRIEFS

### Anchor Baptist Church

The congregation meets at the Astoria Christian Church, 1151 Harrison Ave. On Sundays, the service starts at 1 p.m.; Bible study is at 7 p.m. Thursdays. For information, email anchorbaptistastoria@gmail.com

### Astoria Christian Church

For service information and updates, go to astoriachristian.org or bit.ly/AstoriaChristian, call 503-325-2591 or email AstoriaChristian@gmail.com

### Astoria First Baptist Church

First Baptist Church, 349 Seventh St., holds a worship service at 10:45 a.m. Sunday. The service is also broadcast at fb.me/astoriafirstbaptist. Sunday school starts at 9:30 a.m. There is no child care, but children are encouraged to join the service. For information, call the church office at 503-325-1761.

### Astoria First United Methodist Church

Open for worship on Sundays at 11:30 a.m., 1076 Franklin Ave. Masks are required. For livestream service information, email the church office at office@unitedmethodistastoria.org or call 503-325-5454.

### Common Ground Interspiritual Fellowship

Common Ground Interspiritual Fellowship holds a service from 9:30 to 10:30 a.m. Sunday, via Zoom, which is open to all belief systems, including the spiritual but not religious. For information, go to cgifellowship.org. For the Zoom link, email info@cgifellowship.org

### First Church of Christ, Scientist

Sunday morning services and Sunday school at the Christian Science Church, 632 11th St., are held at 10 a.m.; enter on 11th Street. Wednesday evening testimony meetings are at 7 p.m. Those wishing to attend by phone can get details by calling 971-320-0294. The Reading Room hours are 11:30 a.m. to 1:30 p.m. Tuesday through Thursday, except holidays; enter on Franklin Avenue.

### Grace Episcopal Church

Grace Episcopal Church, 1545 Franklin Ave., is holding Christmas Eve services at 4 and 9 p.m. Fri-

day. There is a 10 a.m. service both Saturday and Sunday, but no 8 a.m. Sunday service. All services will be live streamed both on Facebook and YouTube.

The pantry is open regular hours Tuesday and Thursday from 9 a.m. to noon.

Church office hours are from 10 a.m. to noon Monday through Friday. For information, go to graceastoria.org, call 503-325-4691 or email graceastoria4691@gmail.com

### Olney Community Church

The nondenominational Olney Community Church, 89351 Oregon Highway 202, meets at 9:30 a.m. Sunday for breakfast. Sunday school is at 10 a.m., and the worship service is at 11 a.m. All are welcome. A Wednesday Prayer meeting is at 3 p.m. For information, call the church at 503-325-3394, or Ed Hortsch, pastor, at 503-791-4475.

### Pacific Unitarian Universalist

No service on Sunday. For information, go to pacuuf.org

### Peace First Lutheran

Christmas Eve candlelight services are at 5 p.m. (family) and 10 p.m. (traditional) on Friday, and a Christmas Day service is at 10 a.m. Saturday, at Peace Lutheran Church, 725 33rd St. Sunday services are being held at 8:30 and 11 a.m., with Christmas lessons and carols, at 725 33rd St. The 8:30 a.m. service is also streamed live at bit.ly/3rckrMd

Wednesday Bible Study is at 10:30 a.m., with noon-time prayers following, at 565 12th St.

Church office hours are Monday through Friday 8:30 a.m. to 5 p.m. For information, call 503-325-6252, email office@peacefirstlutheran.com or go to peacefirstlutheran.com

### Pioneer Presbyterian Church

WARRENTON — For service information, call the church at 503-861-2421 or go to pioneerchurchpcusa.org

### St. Mary, Star of the Sea Parish

For information about the St. Vincent de Paul Food Pantry hours, and service and livestreaming information at both the Astoria church and Hammond mission, call 503-325-3671, email office@stmaryastoria.com or go to stmaryastoria.com or bit.ly/stmaryastoria

## Totem realtors donate to local nonprofits



SEASIDE — Realtors from Totem Properties presented the Assistance League of the Columbia Pacific and Seaside Rotary Club Foundation with donations of \$4,500 each on Dec. 16. Each broker commits to donating a portion of their property sales throughout the year, which is given back to the local community in an impactful way. Pictured, from left, Totem brokers Denise Anderson and Sheena Martin, Mary Davies, president, Assistance League of the Columbia Pacific, broker Paula Simantel, Julia Radditz, Totem owner/principal broker, and brokers Todd Braden, Kaia McMahan, Jenny Rapp and Jessica Dornin. Totem brokers not pictured, but who also donated: James Campion and Erik Luysterborghs.

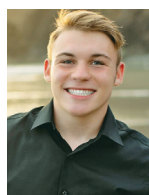
## COMMUNITY BRIEFS

### Seaside Elks award scholarships

SEASIDE — Everett Rollins and Ila Bowles were each awarded \$1,000 scholarships by the Seaside Elks Lodge.



Ila Bowles



Everett Rollins

Rollins and Bowles will compete for further awards against students sponsored by

Elks lodges in St. Helens, Astoria, Tillamook, Lincoln City, Newport, Toledo and Florence.

Exalted Ruler Rodney Roberts said that these scholarships are awarded for superior scholastic achievement as well as outstanding qualities of citizenship and leadership, using criteria from the Elks National Foundation.

### State parks offer free parking for New Year's Day hikes

Guided 2022 First Day Hikes are set for several state parks on Jan. 1, and the normal \$5 day-use parking fee is waived for the 25 parks that normally require a parking permit. The list of hikes, including one at Fort Stevens State Park, can be found on the

event calendar at bit.ly/3mfTx2C

Late December is prime time to look for migrating gray whales as they head south to the warm lagoons of Baja, Mexico. Although trained volunteers and staff will not be available this winter at whale watching sites, most viewing sites managed by Oregon State Parks remain open to visitors. A list of whale watching sites is available at bit.ly/3seObe4

### Honor Roll

The following students have qualified for the honor roll by earning a 3.5 grade point average or higher at school.

**Milwaukee School of Engineering**  
Milwaukee, Wisconsin  
Gearhart: Rachel Morse.

— The Astorian



# City Lumber

Founded 1904

## Your Project Headquarters

Voted **BEST** Home Improvement Store in 2020

READERS' CHOICE AWARDS

---

### DeWalt 15A 8-1/4 In. Compact Job Site Table Saw w/Site-Pro Modular Guarding System



\$319<sup>88</sup>

The powerful DeWalt 15 Amp 5800 rpm motor allows users to complete a majority of applications. Site-Pro modular guarding system allows for tool-free adjustments of the guarding. The rack and pinion telescoping fence allows for fast, easy adjustments and provides 24-1/2 In. rip capacity for ripping 4 x 8 sheet goods. SKU: 339440

### Makita 18V LXT Li-Ion Brushless Drill & Impact Cordless Tool Combo Kit



\$189<sup>99</sup>

18V LXT lithium-ion sub-compact brushless cordless 2-piece combo kit includes: 18V LXT sub-compact brushless 1/2 In. drill-driver, 18V LXT sub-compact brushless impact driver, (2) 18V compact LXT lithium-ion 2.0 Ah battery, Rapid Optimum charger, tool bag. Compact and ergonomic design. SKU#303655

ALL REGULAR PRICED

## LIGHT FIXTURES

IN-STOCK ONLY

"DON'T BE LEFT IN THE DARK."

# 20% OFF

---

### Senco FramePro 325FRHXP 20 Degree Framing Nailer



\$194<sup>99</sup>

Well-balanced lightweight XP framing nailer drives ring, screw, and smooth-shank full round head nails for tough fastening jobs. Specifically engineered for demanding pros and demanding environments. Applications include framing, truss building, sub-flooring, sheathing, decking, siding, fencing, pallets and crate assembly. Features and benefits include ergonomic design, retractable rafter hanger, highly efficient internal design uses less air to drive nails, patented TrueDrive magazine reduces jams and misfeeds, low profile design fits easily between studs and joists, 5 year limited warranty. SKU#302234

### Stanley FatMax Classic Tape Measure



\$9<sup>99</sup>

FatMax tape measure with 11 Ft. of blade stand out. Ergonomic case. 1-1/4 In. wide blade for more durability and first 3 In. has Blade Armor for increased durability. Cushion-grip is built into case for non-slip grip. Multi-functional hook grabs on side, top, or bottom. Heavy-duty mylar coating extends blade life. SKU#344346

### Do it Pry Bar



\$3<sup>97</sup>

Rocker head provides maximum leverage. Beveled nail pulling slots. Carbon steel. Pries, pulls, and scrapes. SKU#317730

---





2142 Commercial, Astoria

325-4511 • 1-800-248-4511

www.citylumber.com

FOLLOW US ON [twitter](#) [facebook](#)

Open Monday - Friday 7:30 am to 5:30 pm; Saturday 8 am to 5 pm; Sunday 9 am to 4 pm