

2nd Saturday

ART WALK

December
11
Noon to 8 p.m.

ASTORIA — The Astoria November Art Walk will take place noon to 8 p.m. Saturday. **Angi D Wildt Gallery, 106 10th St.**

Featuring the work of 20 artists, including new work from local fused glass artist, Christine Kende. Kende will be in the gallery from 4:30 to 7:30 p.m. The gallery will also showcase paintings, tree ornaments, jewelry and holiday gift items.

Art Totale, 395 11th St., The Lot

The giving tree will be set up for visitors to leave a handmade item under in exchange for another. Masks by Rebecca Fries, ceramic goods by Peyton Stewart and fiber art by Connie Shea. A variety of artwork under \$100 will be available.

ARTstoria Gallery, 1168 Commercial St., 2nd Floor #205

Holding an annual holiday sale with small and large works, gifts, prints and original

paintings by Connie Dillon.

Ashriver Woodworks, 229 14th St.

Featuring epoxy furniture and home decor and reclaimed furniture.

Astoria Art Loft, 106 3rd St.

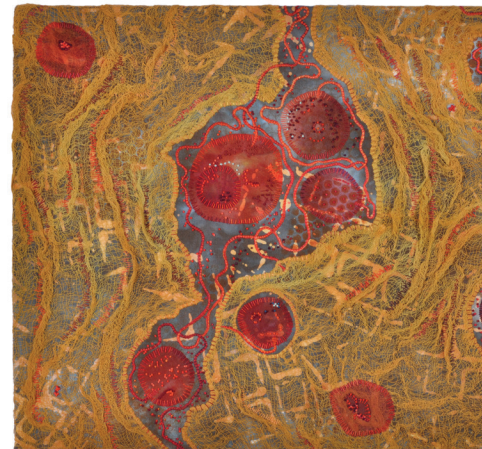
Featuring original fine art, prints, reasonably priced arty gifts, fused glass, jewelry and cards. There will be a special donation and sale of art supplies, frames and more.

Proceeds from donations will go to scholarships for children's art workshops. Open 1 to 4 p.m.

See Page 5



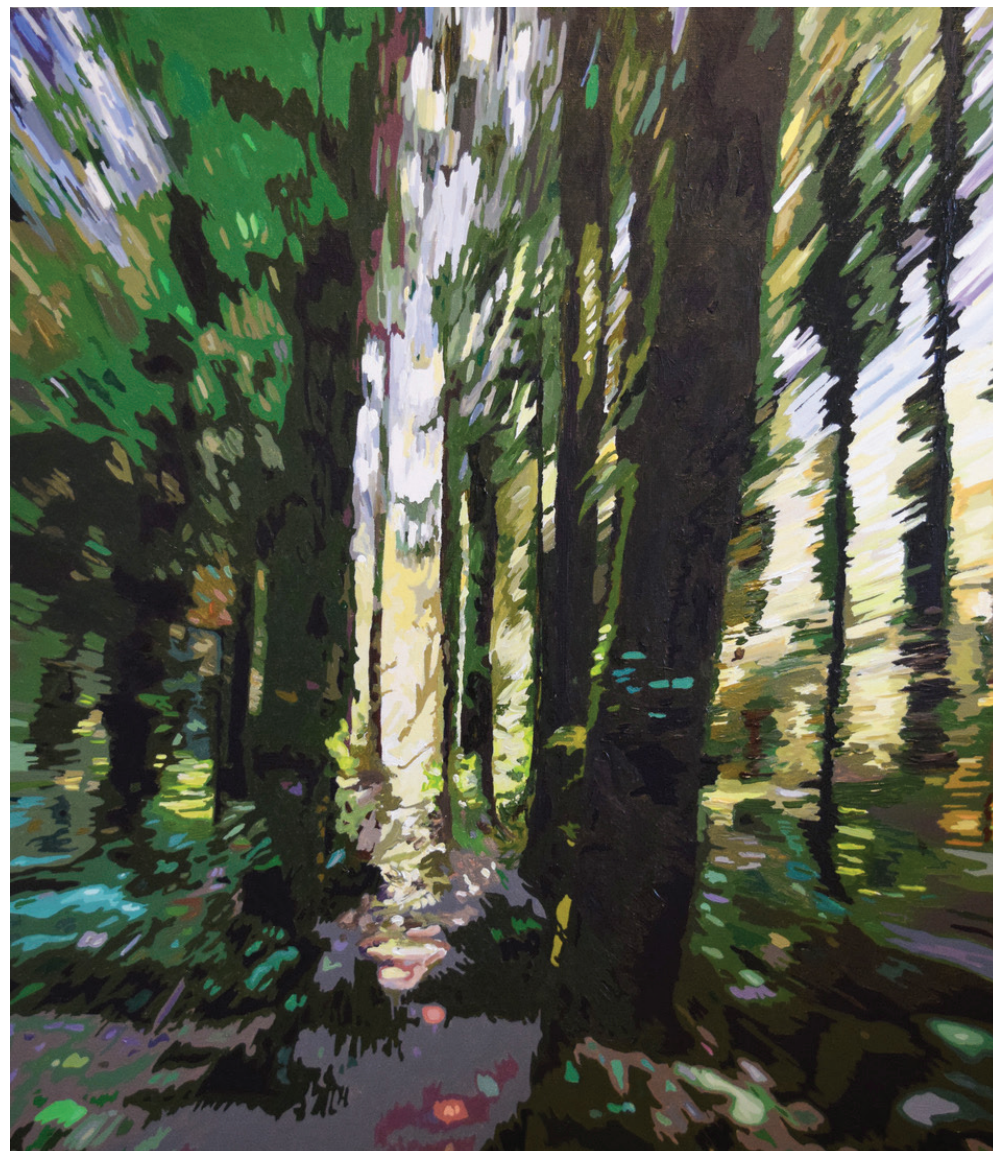
'Ahikaaroa: Under the Beaver Moon,' is an exhibition of wood-fired ceramics by local artists Richard Rowland and Randy McClelland freshly unloaded from Rowland's anagama-style hillside kiln secluded in the forested outskirts of Astoria. The exhibit will be on display at RiverSea Gallery.



This cotton, silk, cheesecloth and embroidery floss piece by S. Circone will be on display at Imogen Gallery.



'Morning Patrol,' a mixed-media collage by Lindsey Aarts, will be on display at RiverSea Gallery.



'She Ran Through the Forest. She Did Not Stumble,' by Connie Dillon, will be on display at ARTstoria Gallery.

The Franklin Apartments



Providing Elegance & Efficiency to
Downtown Astoria for Over 100 Years

1432 Franklin Avenue
Community Property Management



503-325-5678